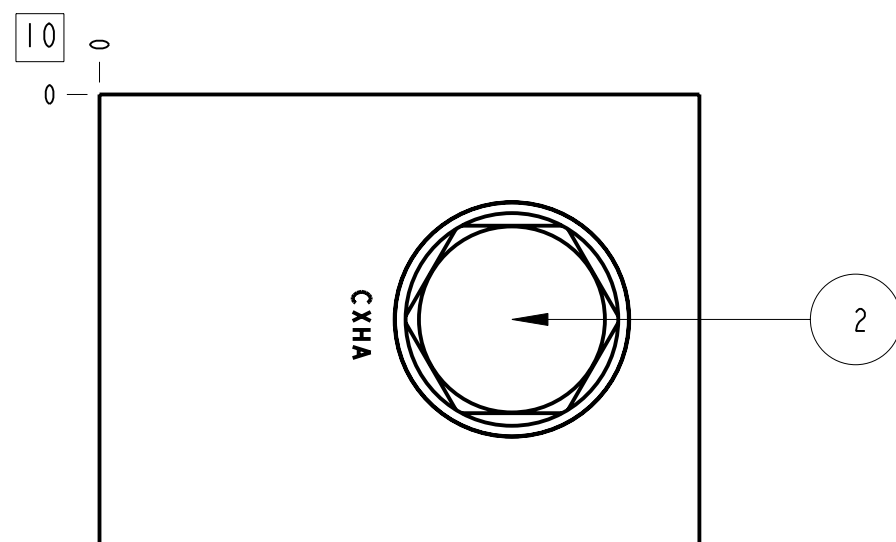
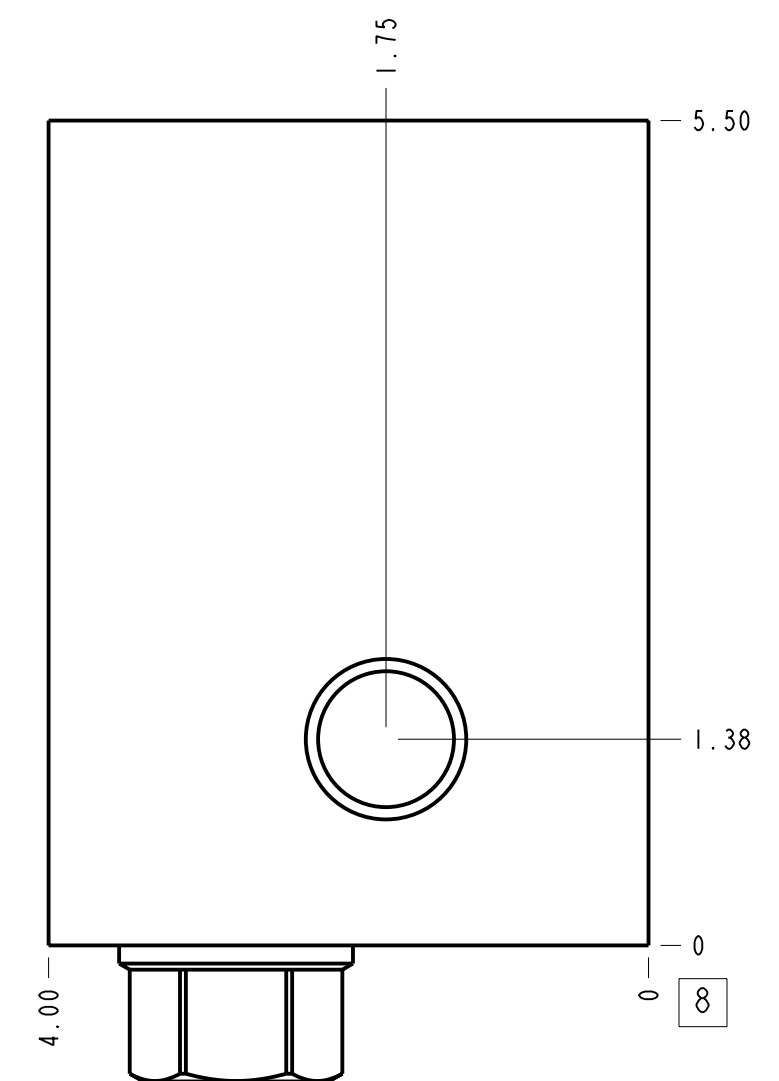
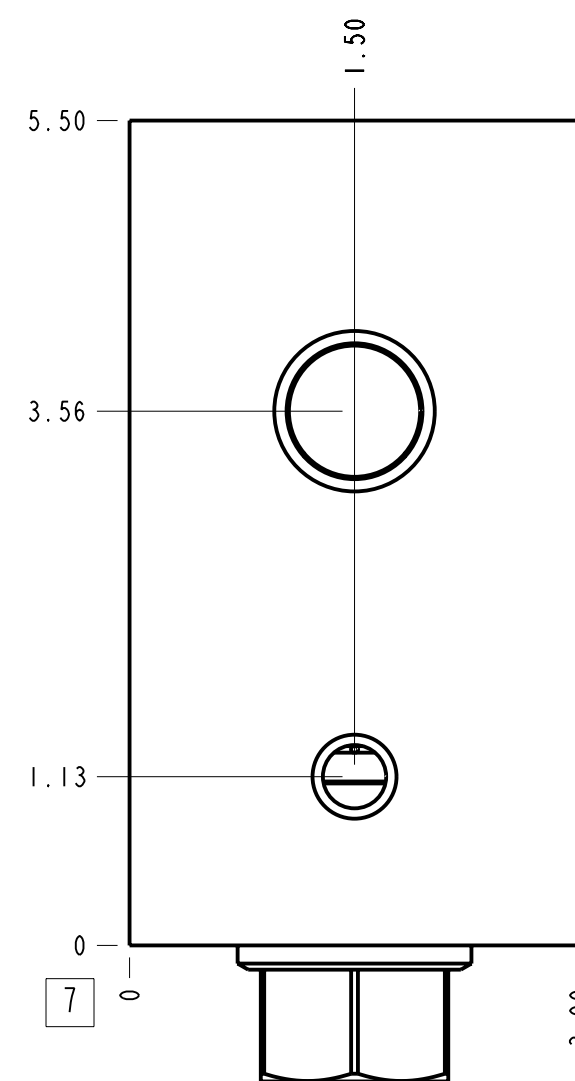
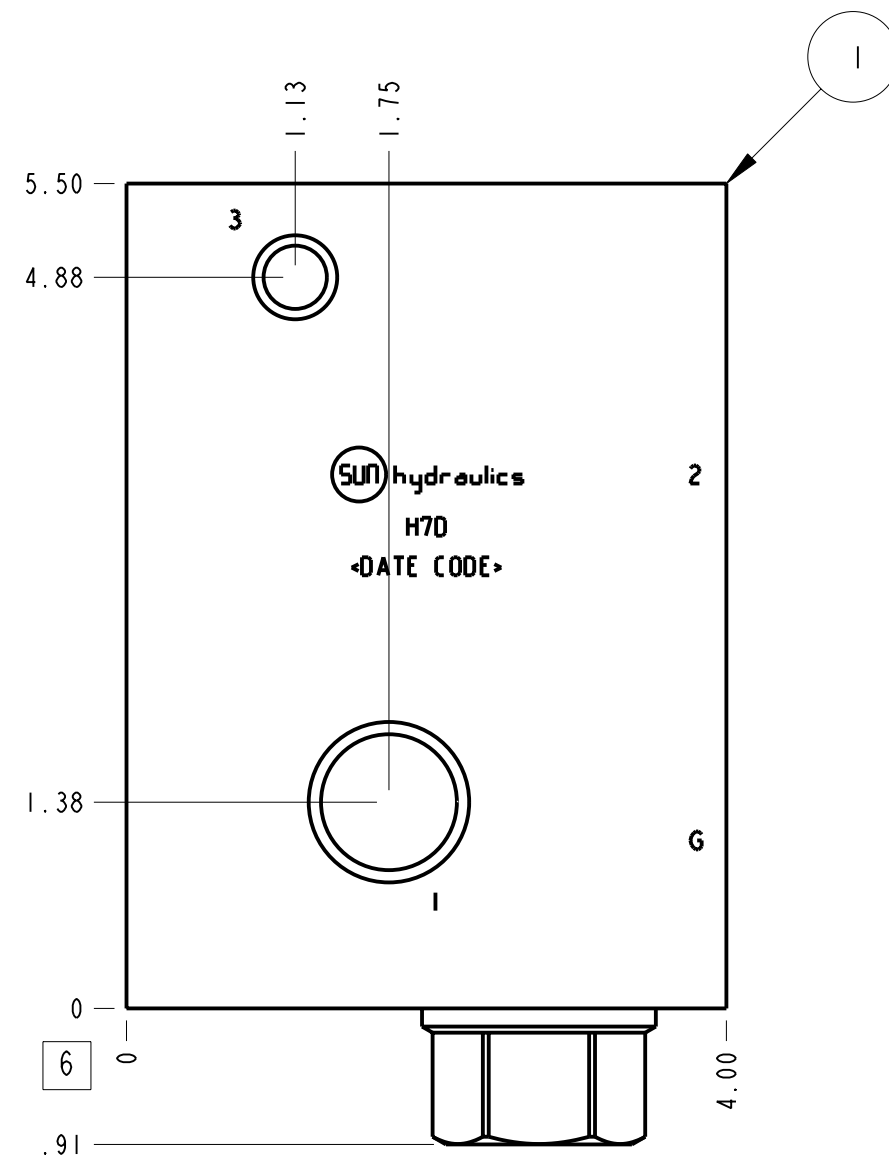
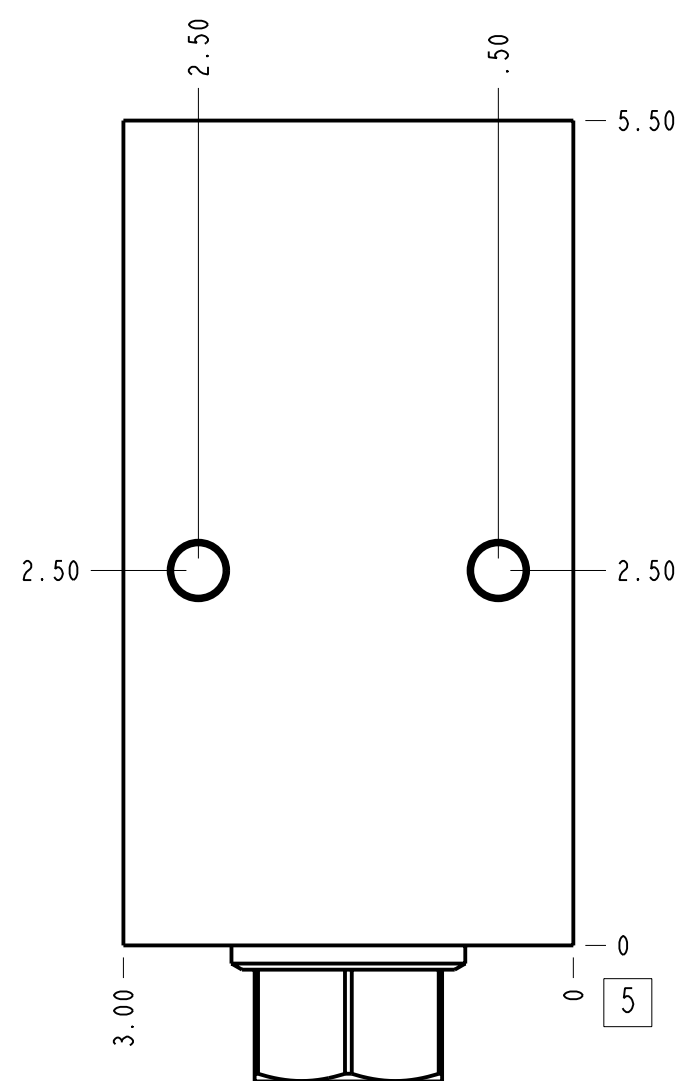
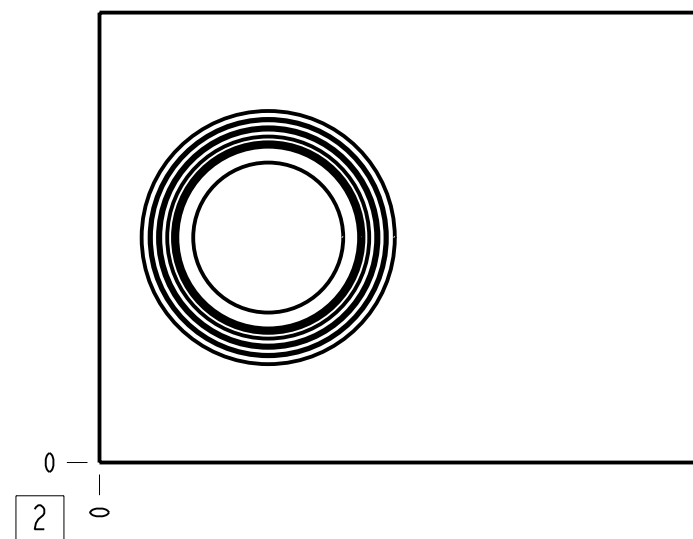


| Technical Data                 | U.S. Units                             | Metric Units |
|--------------------------------|--|--------------|
| Cavity                         | T-17A                                  |              |
| Body Features                  | Through port 1 with reverse flow check |              |
| Body Type                      | Line mount                             |              |
| Interface                      | None                                   |              |
| Open Cavity Quantity           | 1                                      |              |
| Weight                         | 6.063 lb.                              | 2,750 kg.    |
| Mounting Hole Thread           | .375-16 UNC - 2B in.                   |              |
| Mounting Hole Depth            | .62 in.                                | 15,7 mm      |
| Mounting Hole Quantity         | 2                                      |              |
| Includes integral cartridge(s) | Yes (see Included Components)          |              |



**Notes**

- Important: Carefully consider the maximum system pressure. The pressure rating of the manifold is dependent on the manifold material, with the port type/size a secondary consideration. Manifolds constructed of aluminum are not rated for pressures higher than 3000 psi (210 bar), regardless of the port type/size specified.
- This drawing is for reference only. It is generated by an automated process and does not fall under Sun's document control process.

| Port Headings |             |           |
|---------------|-------------|-----------|
| Product       | Port        | Size      |
| H7D           | Ports 1 & 2 | 3/4" NPTF |
| H7D           | Port 3      | 1/4" NPTF |
| H7D           | Gage Port   | 1/4" NPTF |

|             |             |  |                  |  |             |             |
|-------------|-------------|--|------------------|--|-------------|-------------|
| 2           | CXHAXCN     |  | CHECK VALVE      | 1  |             |             |
| 1           | 151-040-001 |  | 6061-T6 ALUMINUM | BODY   | 1           |             |
| ITEM        | PART NO.    | SETTING  | MATERIAL         | PART NAME                                    | QTY         |             |
|             | MODEL       |  | H7D              | ALL DIMENSIONS IN INCH VIEWS ARE THIRD ANGLE | FIRST ANGLE | THIRD ANGLE |
| DESCRIPTION |             | T-17A Line mount<br>Through port 1 with reverse flow check | DATE             | SCALE  | DWG SIZE    | SHEET       |
|             |             | Jun-19-24  | 0.781            | C  | 1           |             |

