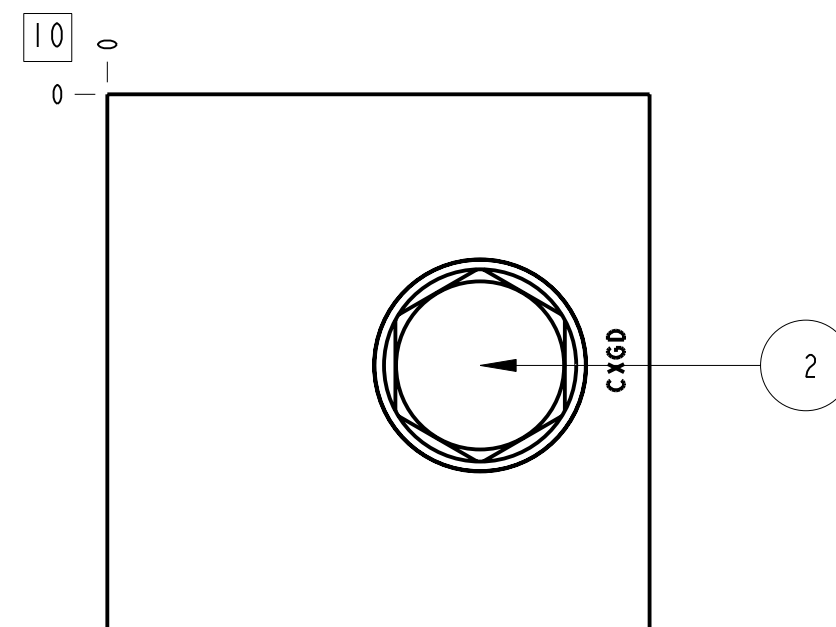
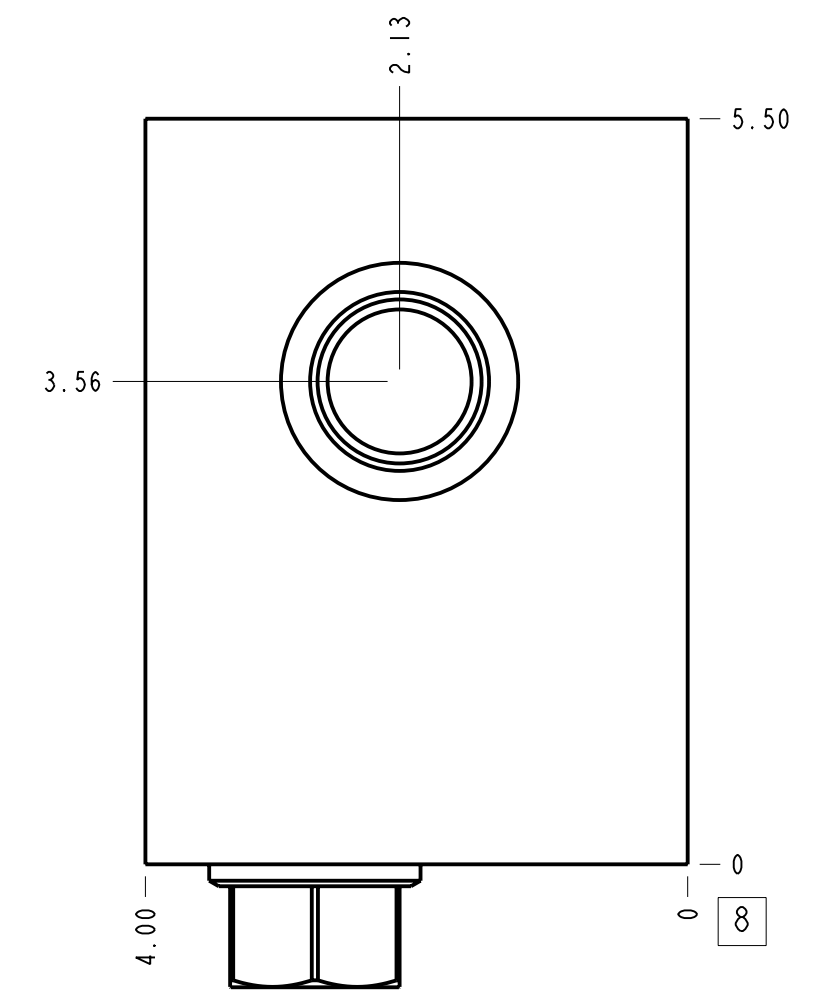
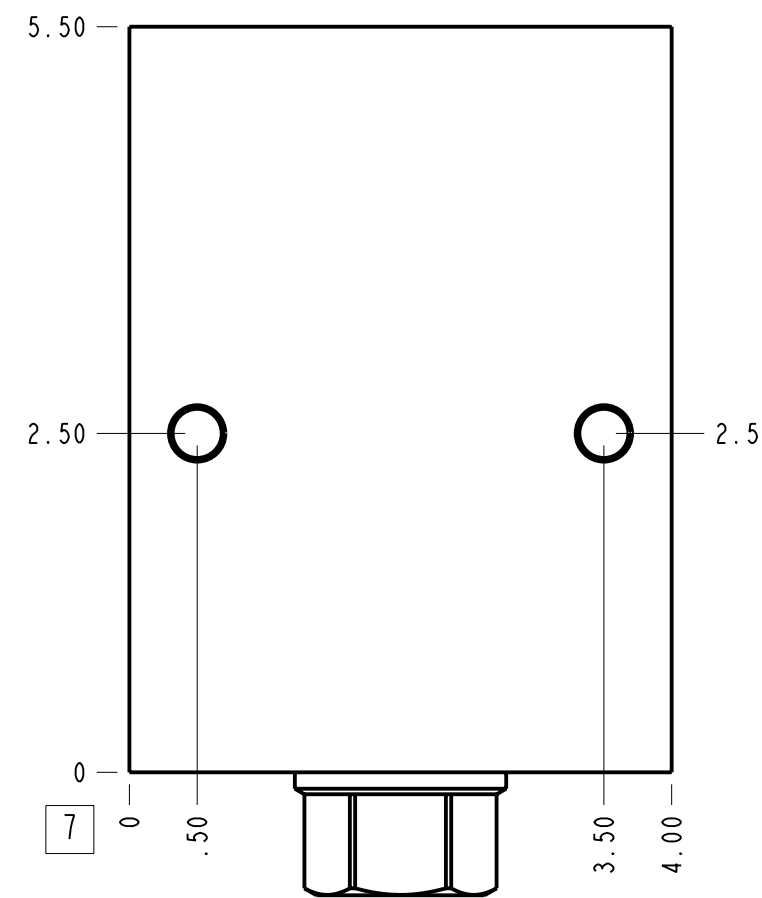
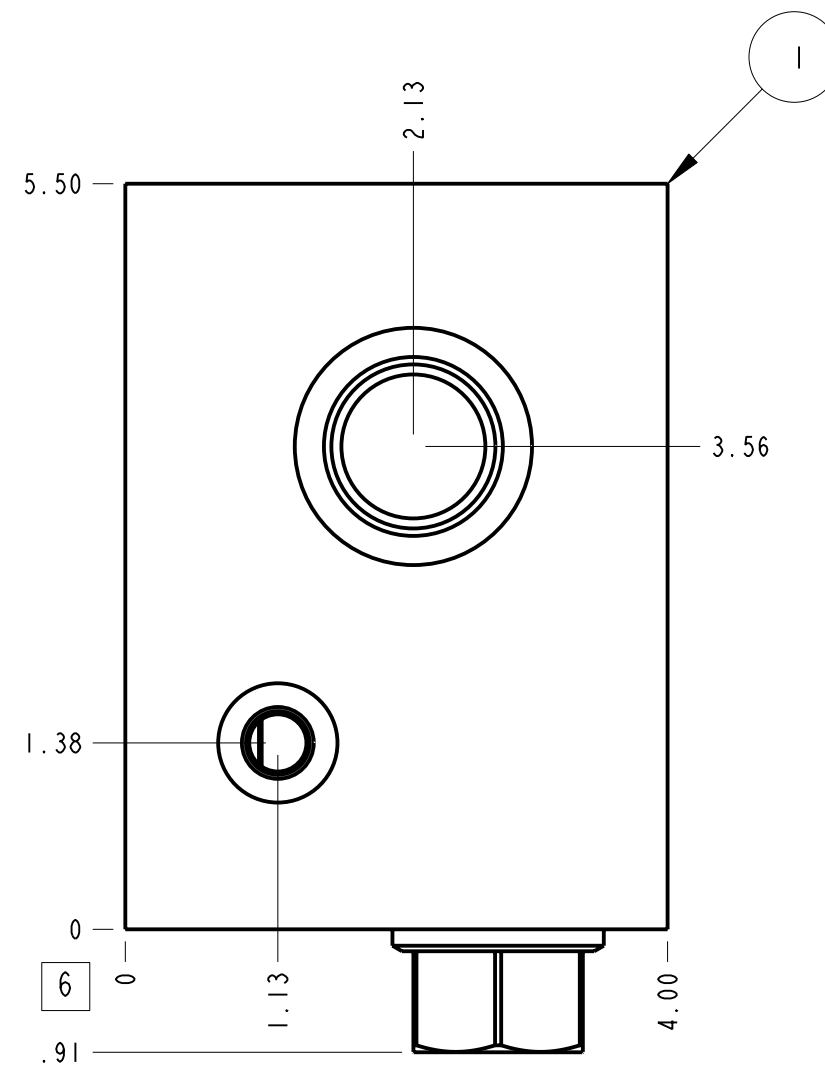
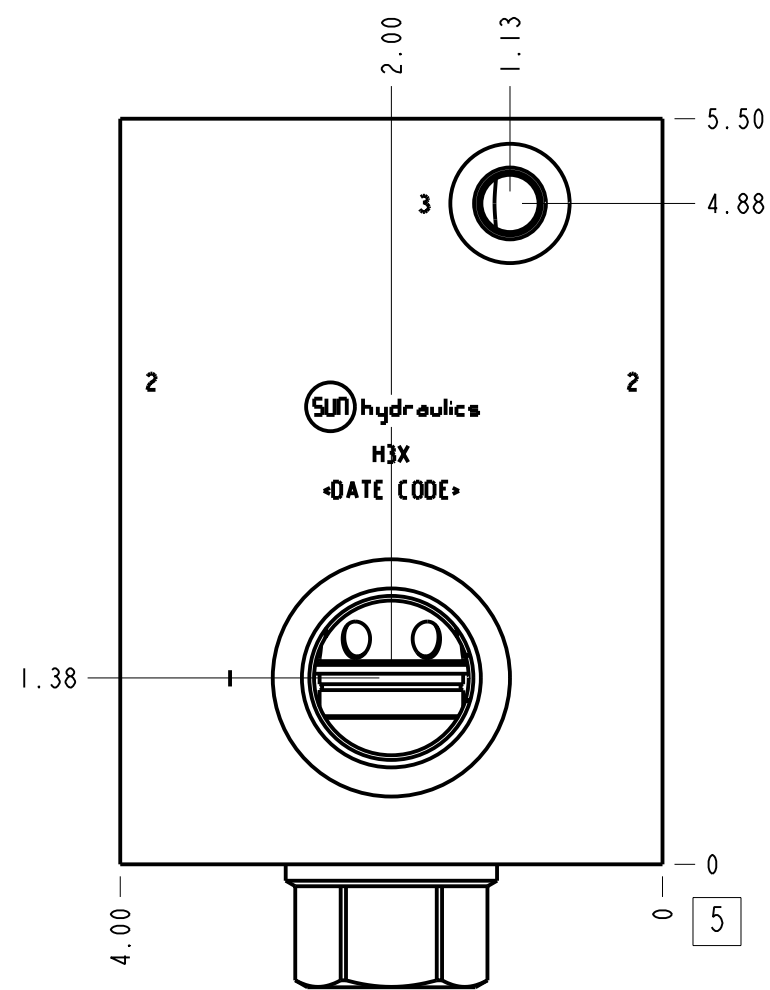
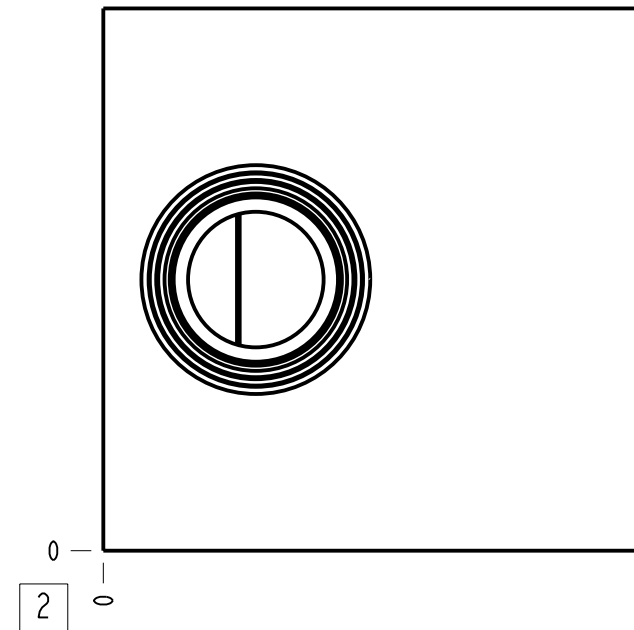


Technical Data	U.S. Units	Metric Units
Cavity	T-17A	
Body Features	Through port 2 with reverse flow check	
Body Type	Line mount	
Interface	None	
Open Cavity Quantity	1	
Weight	7.950 lb.	3,606 kg.
Mounting Hole Thread	M10x1.5 - 6H	
Mounting Hole Depth	.62 in.	15,7 mm
Mounting Hole Quantity	2	
Includes integral cartridge(s)	Yes (see Included Components)	



Notes

- Important: Carefully consider the maximum system pressure. The pressure rating of the manifold is dependent on the manifold material, with the port type/size a secondary consideration. Manifolds constructed of aluminum are not rated for pressures higher than 3000 psi (210 bar), regardless of the port type/size specified.
- This drawing is for reference only. It is generated by an automated process and does not fall under Sun's document control process.

Port Headings		
Product	Port	Size
H3X	Ports 1 & 2	1" BSPP
H3X	Port 3	1/4" BSPP
H3X	Gage Port	1/4" BSPP

2	CXGDXCN			CHECK VALVE	1	
1	151-161-008		6061-T6 ALUMINUM	BODY	1	
ITEM	PART NO.	SETTING	MATERIAL	PART NAME	QTY	
	MODEL H3X			ALL DIMENSIONS IN INCH VIEWS ARE THIRD ANGLE	FIRST ANGLE	THIRD ANGLE
DESCRIPTION T-17A Line mount Through port 2 with reverse flow check			DATE Mar-15-24	SCALE 0.706	DWG SIZE C	SHEET 1

