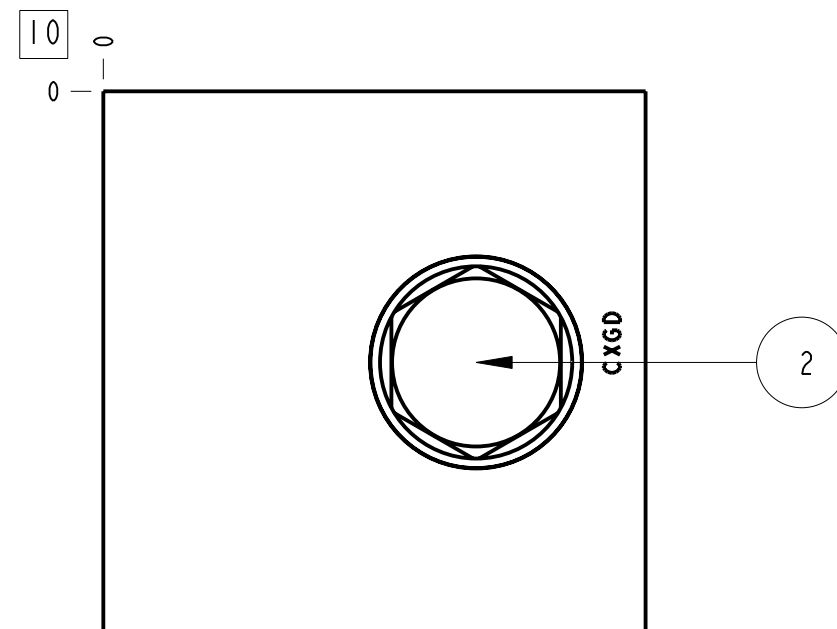
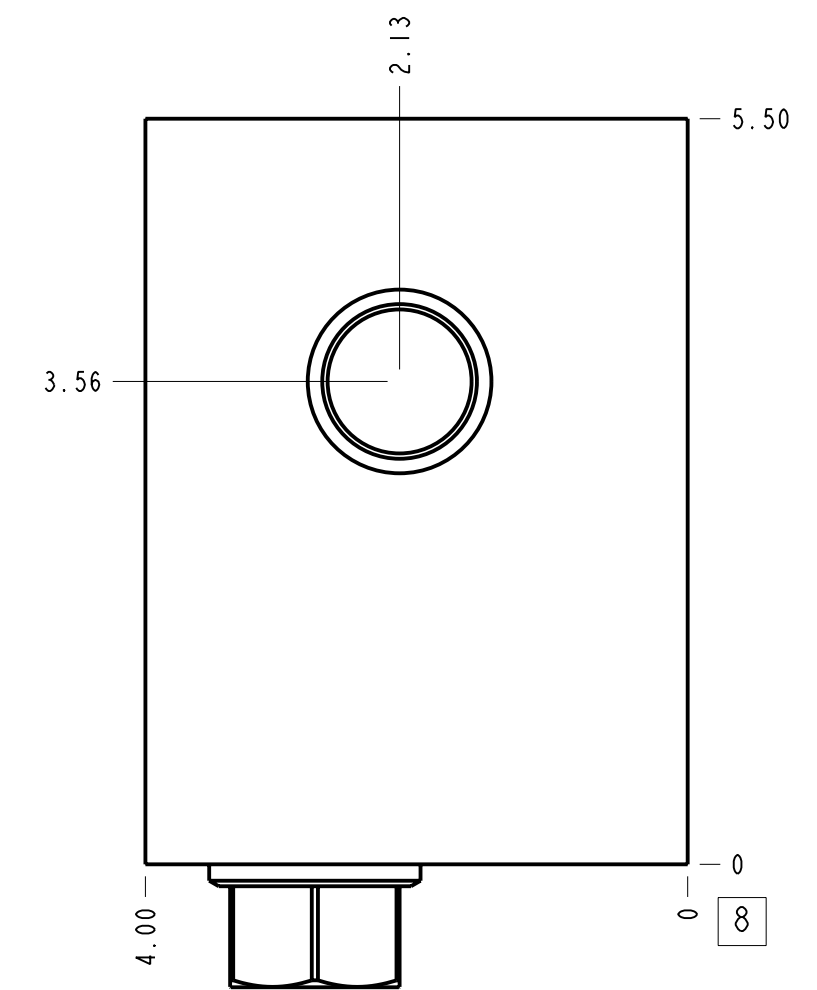
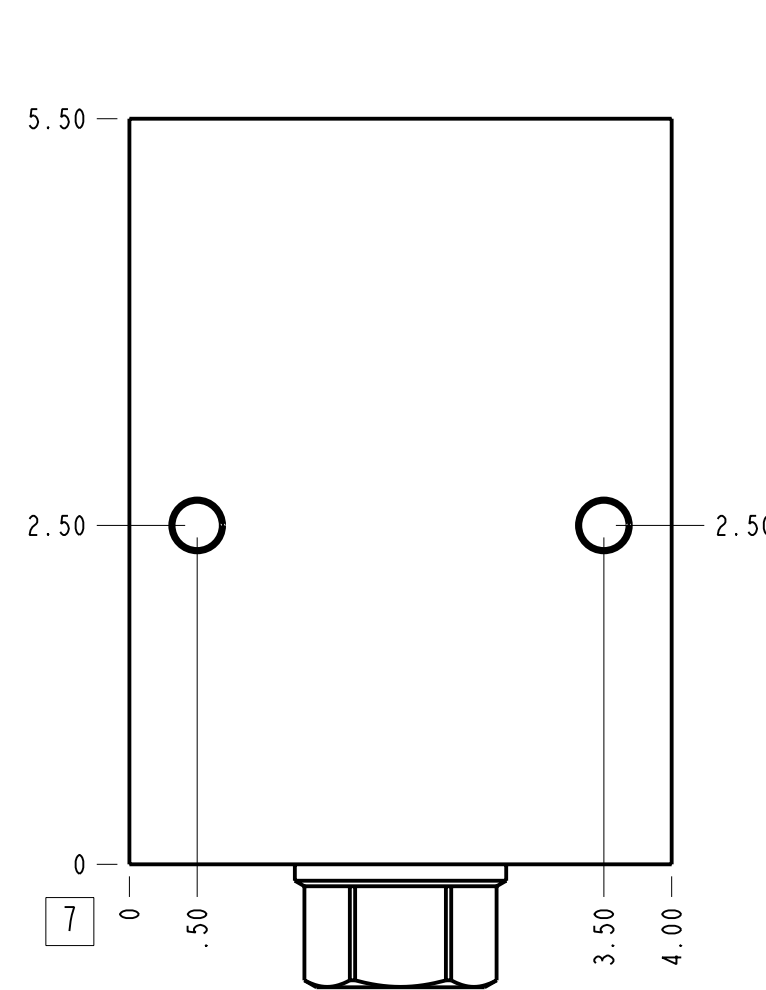
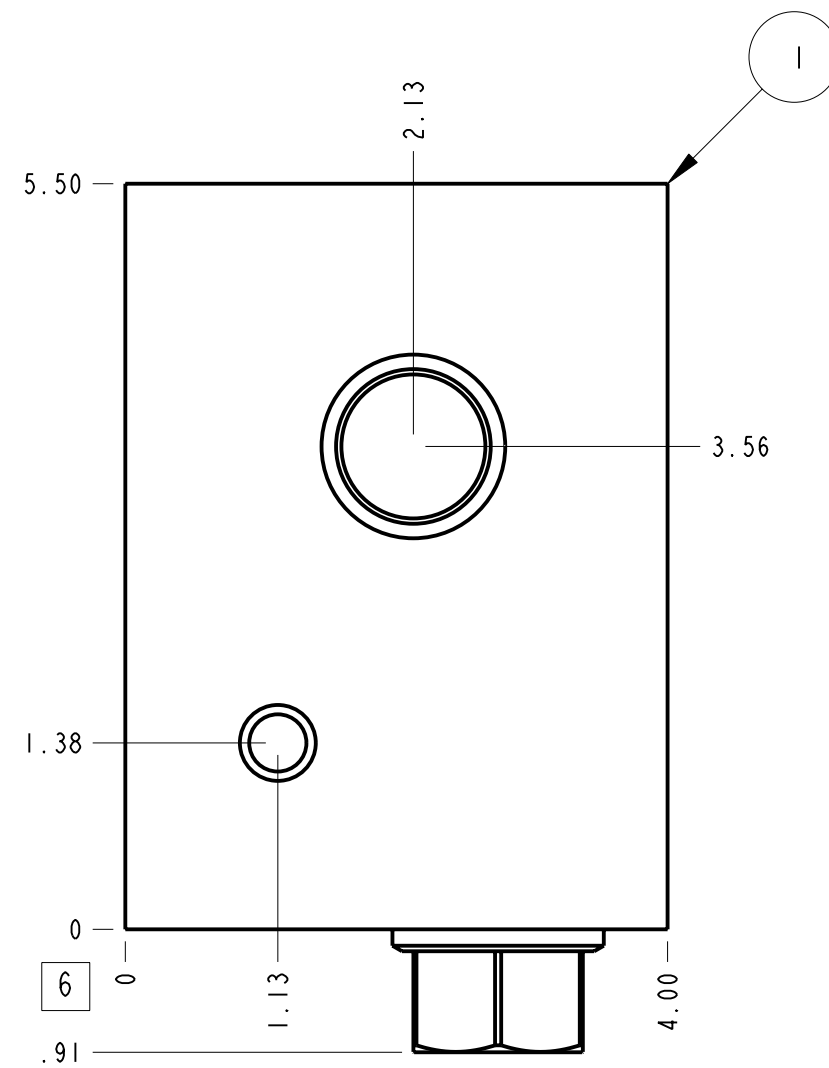
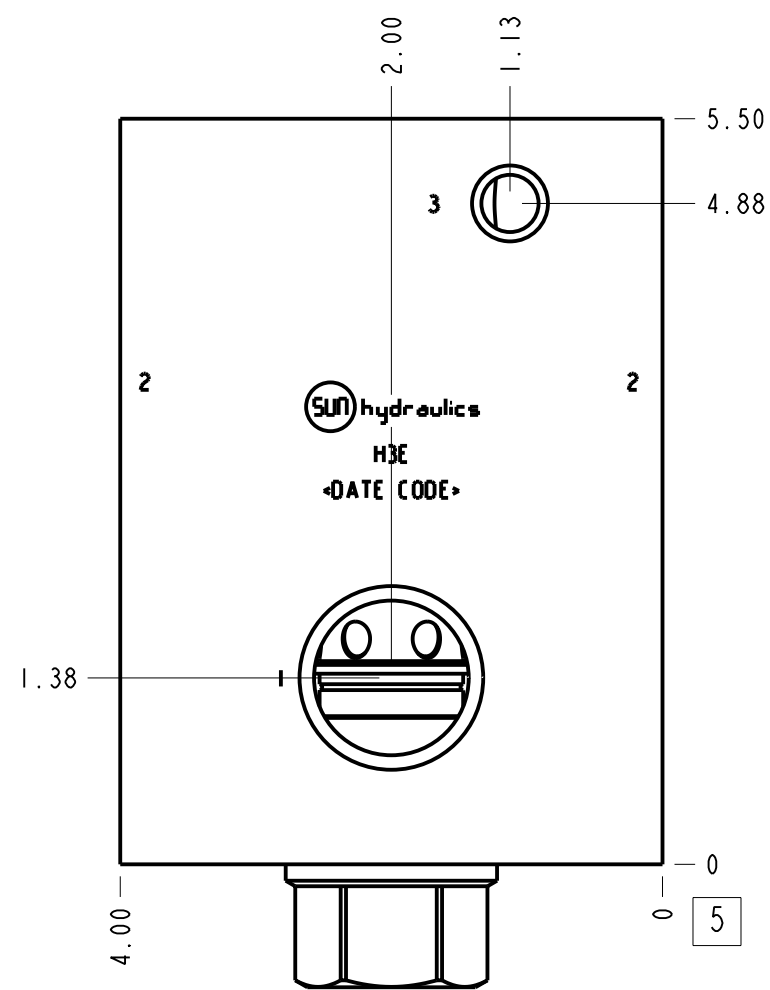
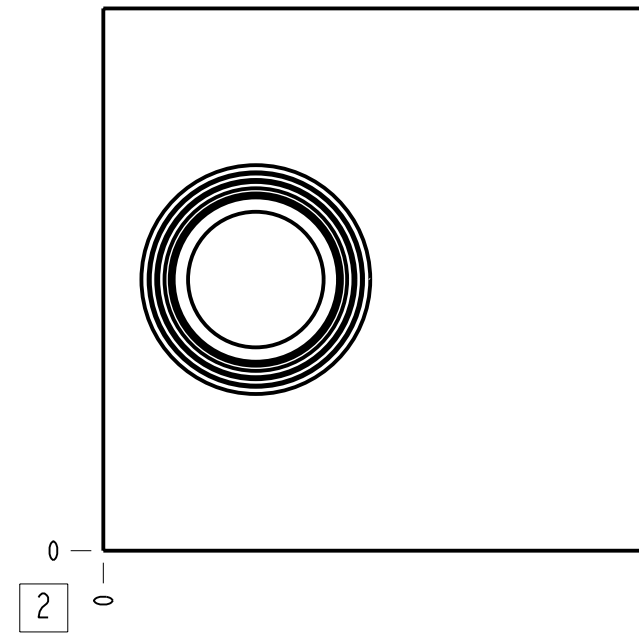


Technical Data	U.S. Units	Metric Units
Cavity	T-17A	
Body Features	Through port 2 with reverse flow check	
Body Type	Line mount	
Interface	None	
Open Cavity Quantity	1	
Weight	7.993 lb.	3,626 kg.
Mounting Hole Thread	.375-16 UNC - 2B in.	
Mounting Hole Depth	.62 in.	15,7 mm
Mounting Hole Quantity	2	
Includes integral cartridge(s)	Yes (see Included Components)	



**Notes**

- Important: Carefully consider the maximum system pressure. The pressure rating of the manifold is dependent on the manifold material, with the port type/size a secondary consideration. Manifolds constructed of aluminum are not rated for pressures higher than 3000 psi (210 bar), regardless of the port type/size specified.
- This drawing is for reference only. It is generated by an automated process and does not fall under Sun's document control process.

Port Headings		
Product	Port	Size
H3E	Ports 1 & 2	1" NPTF
H3E	Port 3	1/4" NPTF
H3E	Gage Port	1/4" NPTF

2	CXGDXCN		CHECK VALVE	1		
1	151-161-002	6061-T6 ALUMINUM	BODY	1		
ITEM	PART NO.	SETTING	MATERIAL	PART NAME	QTY	
	MODEL		H3E	ALL DIMENSIONS IN INCH VIEWS ARE THIRD ANGLE	FIRST ANGLE	THIRD ANGLE
DESCRIPTION		T-17A Line mount Through port 2 with reverse flow check	DATE	SCALE	DWG SIZE	SHEET
		Jul-11-24	0.706	C	1	

