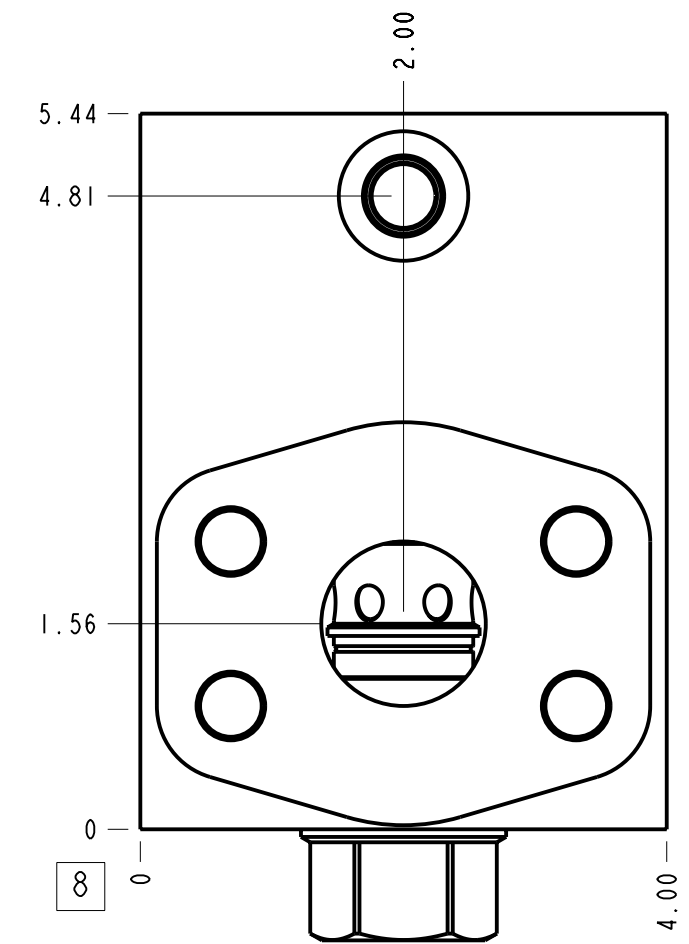
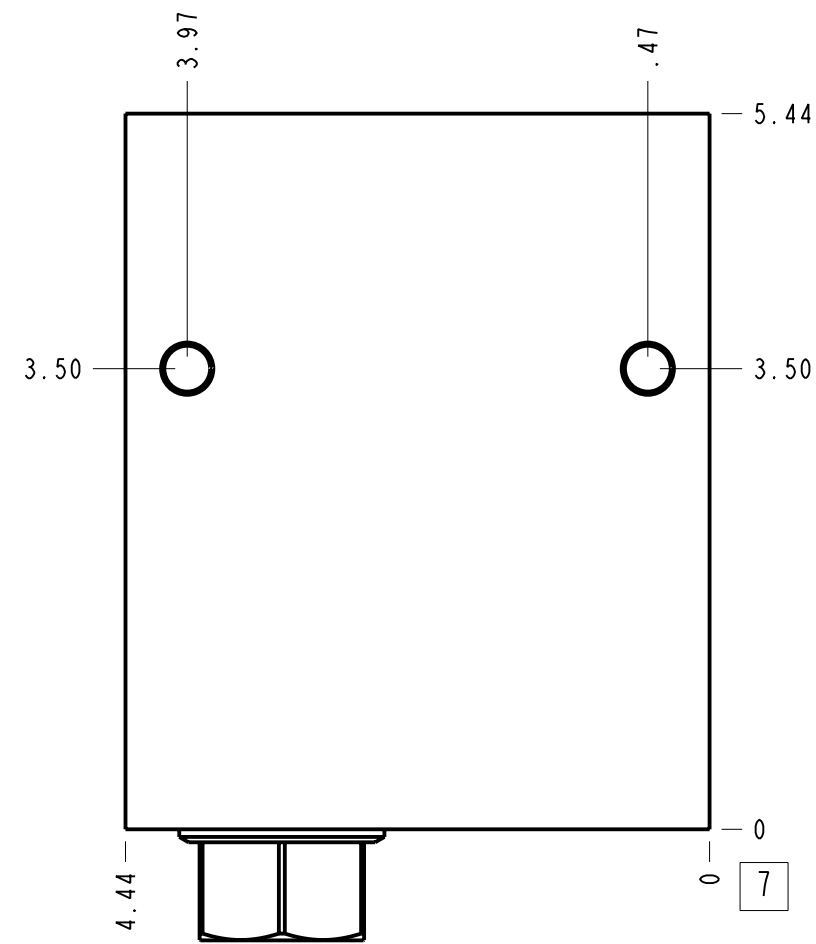
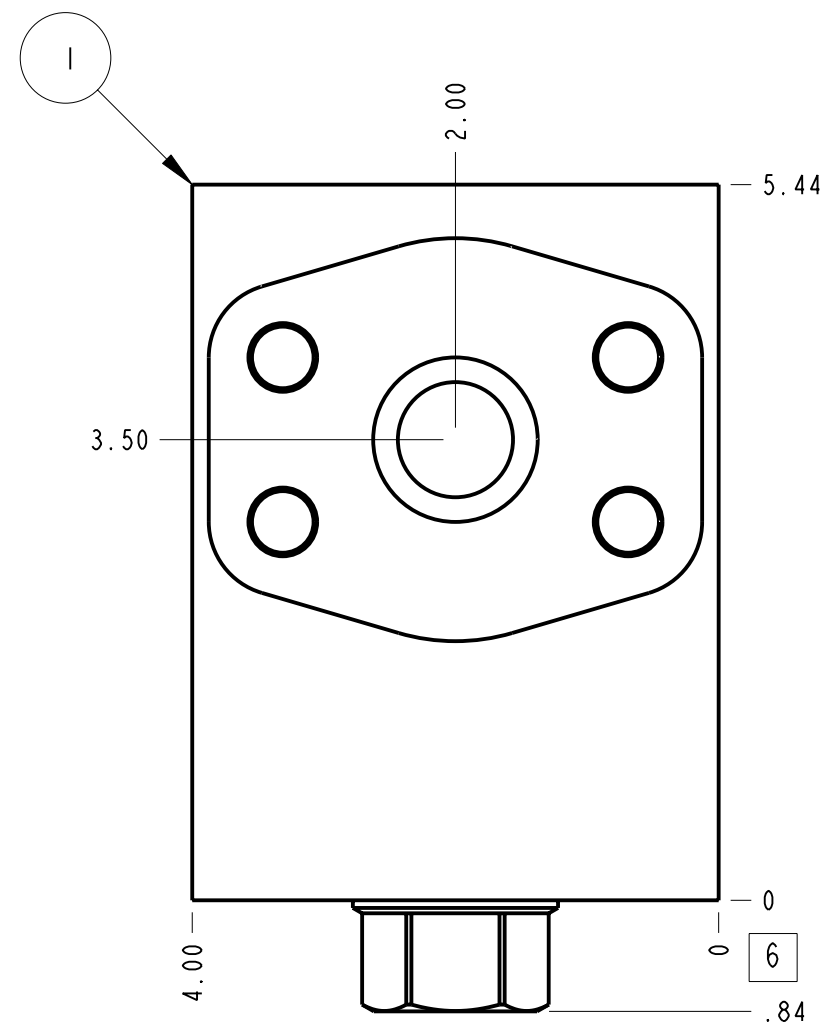
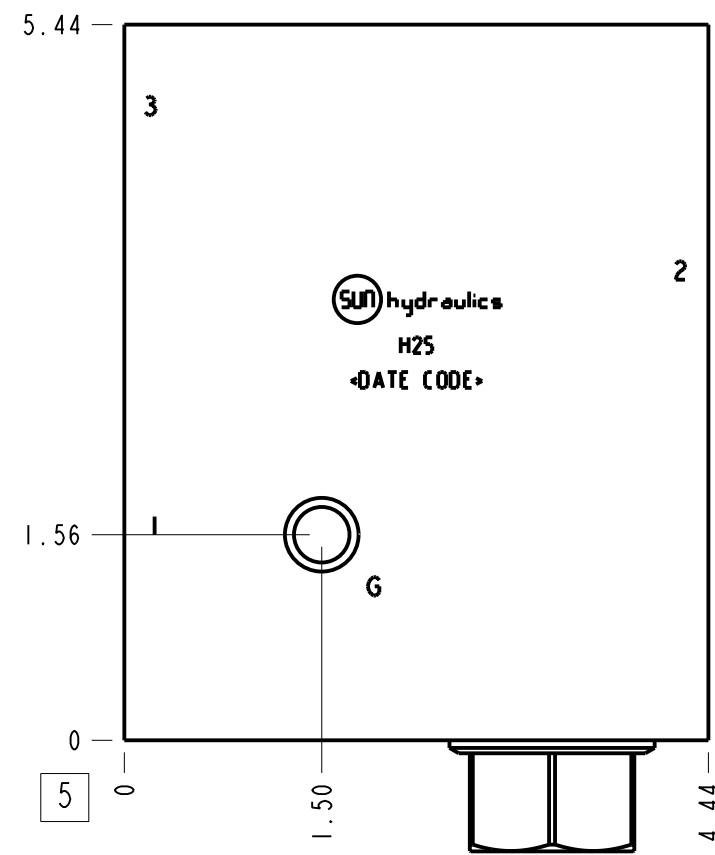
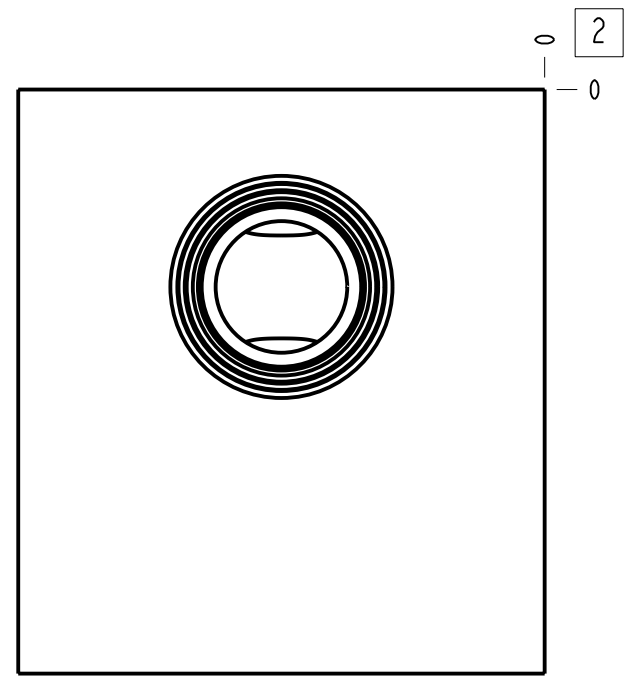
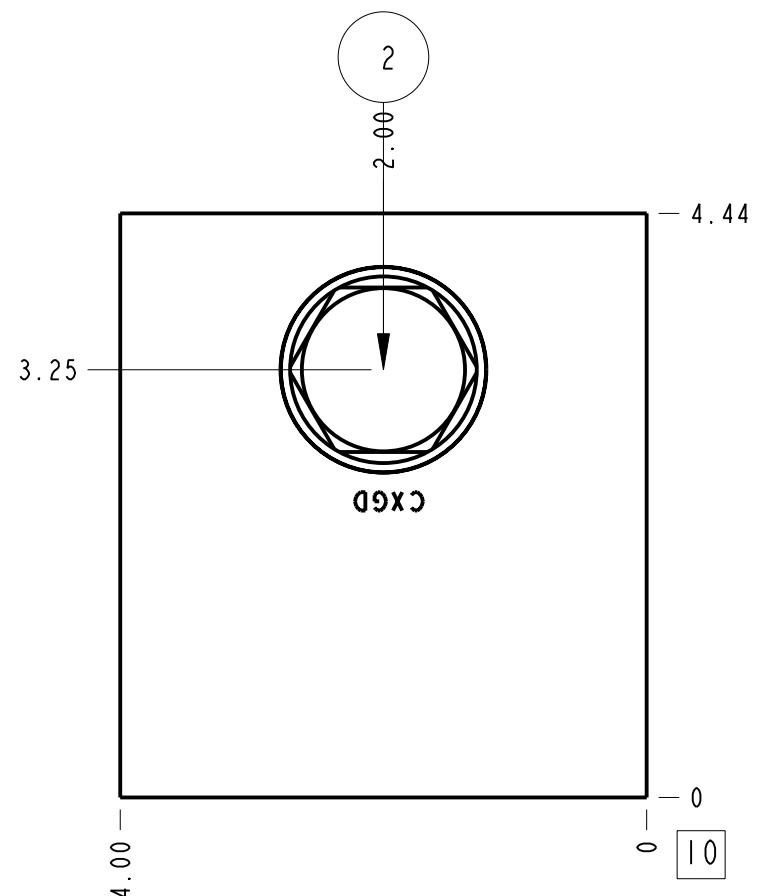


Technical Data	U.S. Units	Metric Units
Cavity	T-17A	
Body Features	Ninety degree with reverse flow check - reducing	
Body Type	Line mount	
Interface	None	
Open Cavity Quantity	1	
Weight	8.752 lb.	3,970 kg.
Mounting Hole Thread	.375-16 UNC - 2B in.	
Mounting Hole Depth	.62 in.	15,7 mm
Mounting Hole Quantity	2	
Includes integral cartridge(s)	Yes (see Included Components)	



**Notes**

- Important: Carefully consider the maximum system pressure. The pressure rating of the manifold is dependent on the manifold material, with the port type/size a secondary consideration. Manifolds constructed of aluminum are not rated for pressures higher than 3000 psi (210 bar), regardless of the port type/size specified.
- This drawing is for reference only. It is generated by an automated process and does not fall under Sun's document control process.



Port Headings		
Product	Port	Size
H25	Ports 1 & 2	1/4 in. Code 62
H25	Port 3	SAE 6
H25	Gage Port	1/4" NPTF

2	CXGDXCN		CHECK VALVE	1		
1	151-947-001	6061-T6 ALUMINUM	BODY	1		
ITEM	PART NO.	SETTING	MATERIAL	PART NAME	QTY	
	MODEL		H25	ALL DIMENSIONS IN INCH VIEWS ARE THIRD ANGLE	FIRST ANGLE THIRD ANGLE	
DESCRIPTION		T-17A Line mount (See Technical Data for Body Features)	DATE	SCALE	DWG SIZE	SHEET
		Dec-01-23	0.685	C	1	

