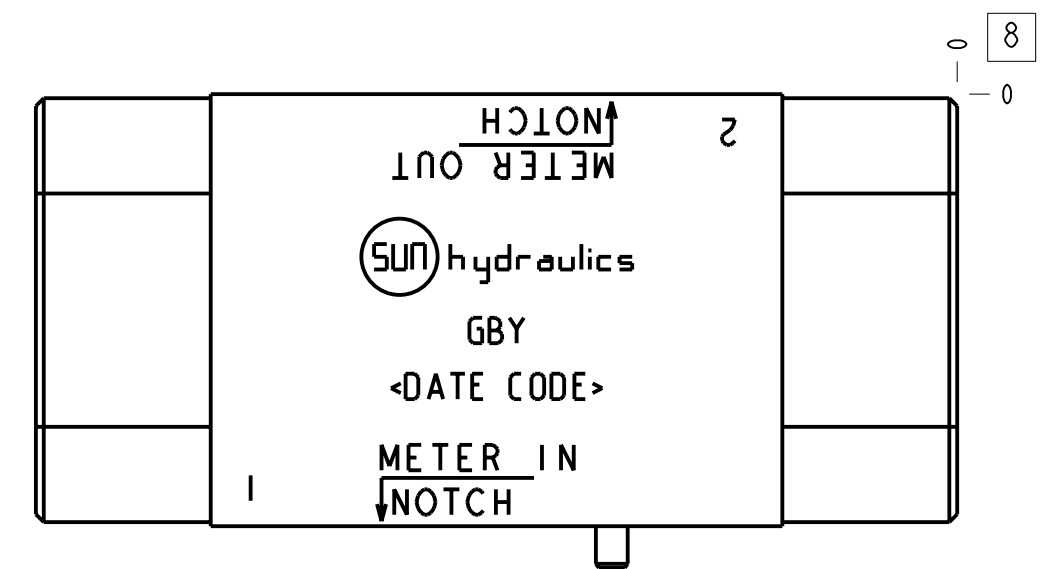
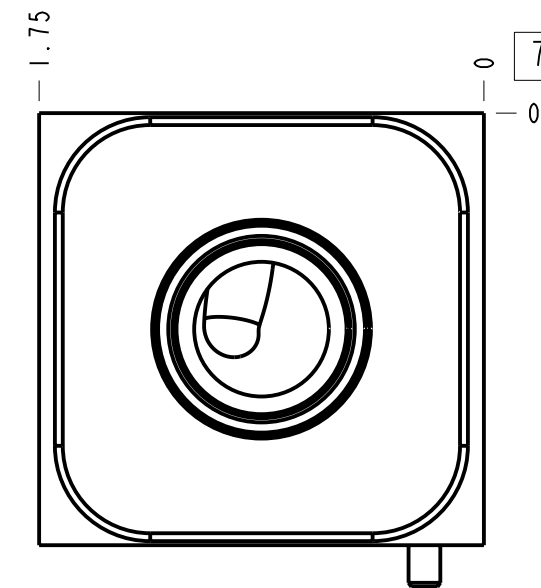
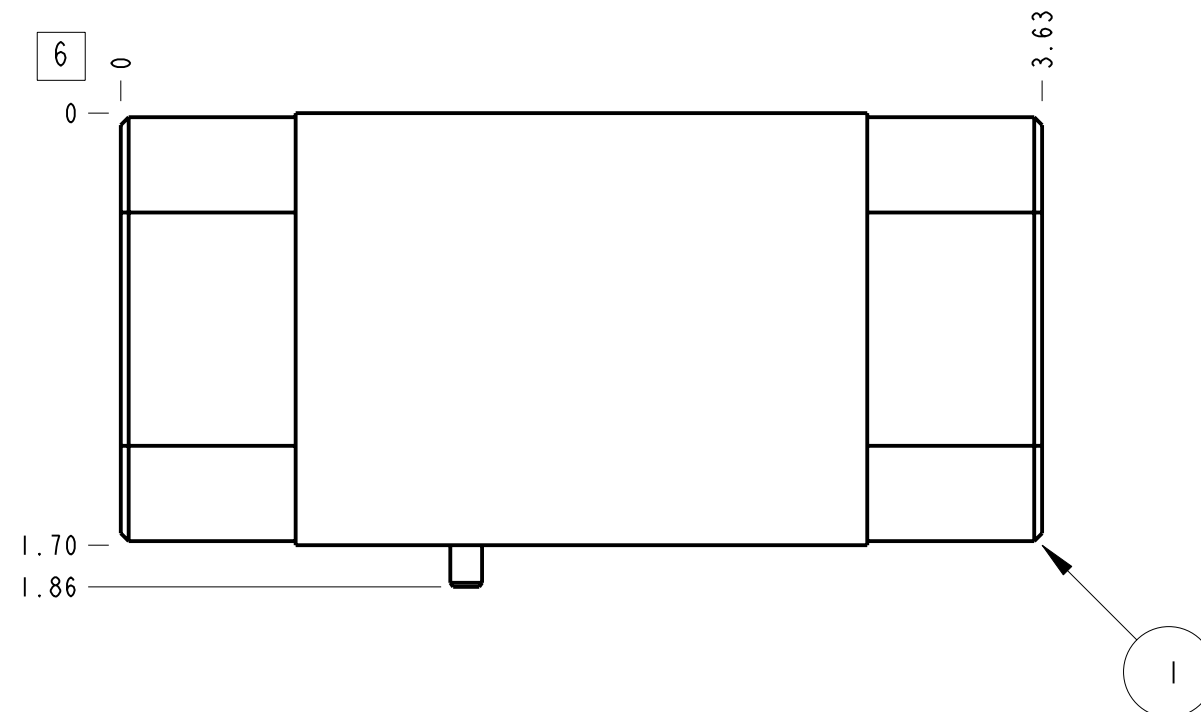
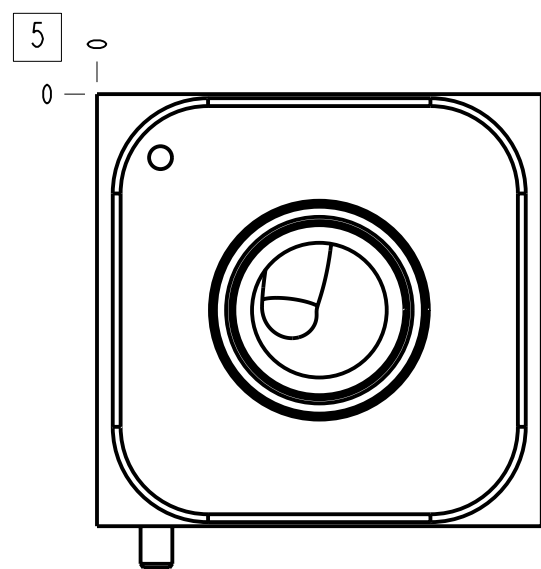


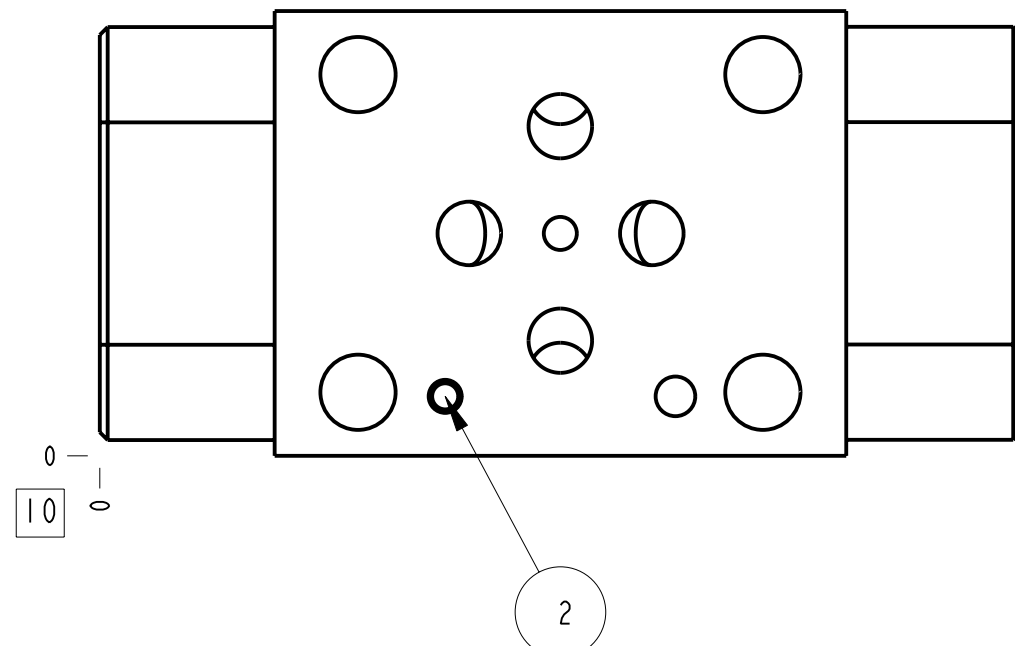
Technical Data	U.S. Units	Metric Units
Cavity	T-13A	
Body Features	Flow into workports A and B or out of A and B	
Body Type	Sandwich	
Interface	ISO 03	
Open Cavity Quantity	2	
Stack Height	1.75 in.	44,5 mm
Weight	0.837 lb.	0,380 kg.
Seal Plate Included (see notes)	Yes	

Related Accessories	
Part Number	Description
990-105-003	ISO 03 sandwich manifold Viton seal kit
990-105-007	ISO 03 sandwich manifold buna-N seal kit
990-106-003	ISO 03 sandwich manifold retainer and Viton seal kit
990-106-007	ISO 03 sandwich manifold retainer and buna-N seal kit



Notes

- Stack height value in technical data table includes seal retainer plate.
- Important: Carefully consider the maximum system pressure. The pressure rating of the manifold is dependent on the manifold material, with the port type/size a secondary consideration. Manifolds constructed of aluminum are not rated for pressures higher than 3000 psi (210 bar), regardless of the port type/size specified.
- Customer to install locating pin according to functional orientation required.
- This drawing is for reference only. It is generated by an automated process and does not fall under Sun's document control process.
- Items without balloons are shipped loose.



ITEM	PART NO.	SETTING	MATERIAL	PART NAME	QTY
4	700-002			SEAL PLATE	1
3	500-001-012			O-RING	4
2	811-001-006		LOW CARBON STEEL	PIN	1
1	150-295		6061-T6 ALUMINUM	BODY	1

MODEL		GBY		ALL DIMENSIONS IN INCH VIEWS ARE THIRD ANGLE		FIRST ANGLE		THIRD ANGLE	
DESCRIPTION		DATE	SCALE	DWG SIZE	SHEET				
T-13A Sandwich ISO 03 (See Technical Data for Body Features)		Oct-04-24	1.324	C	1				