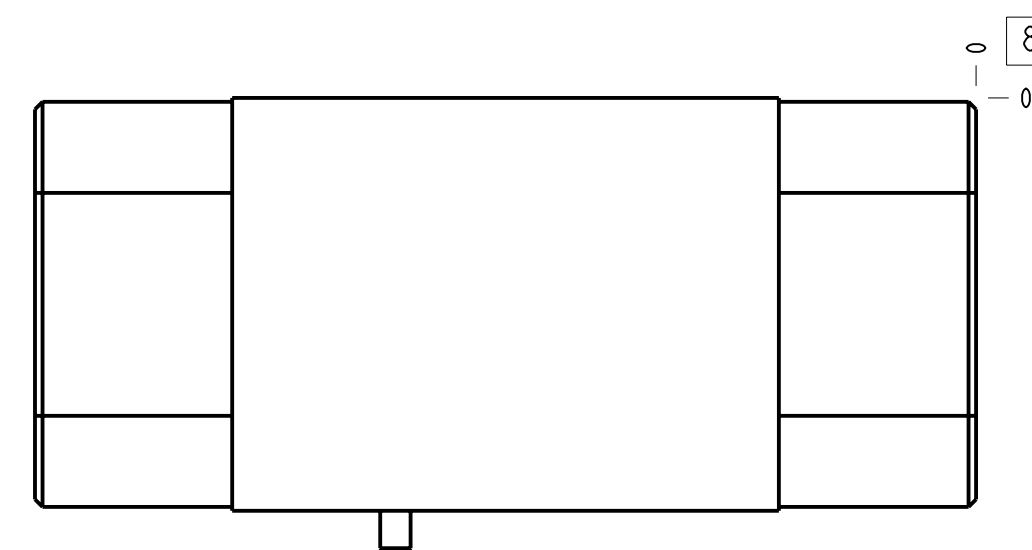
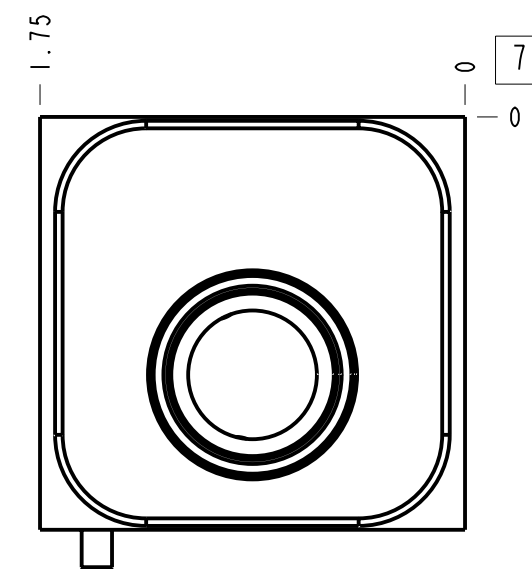
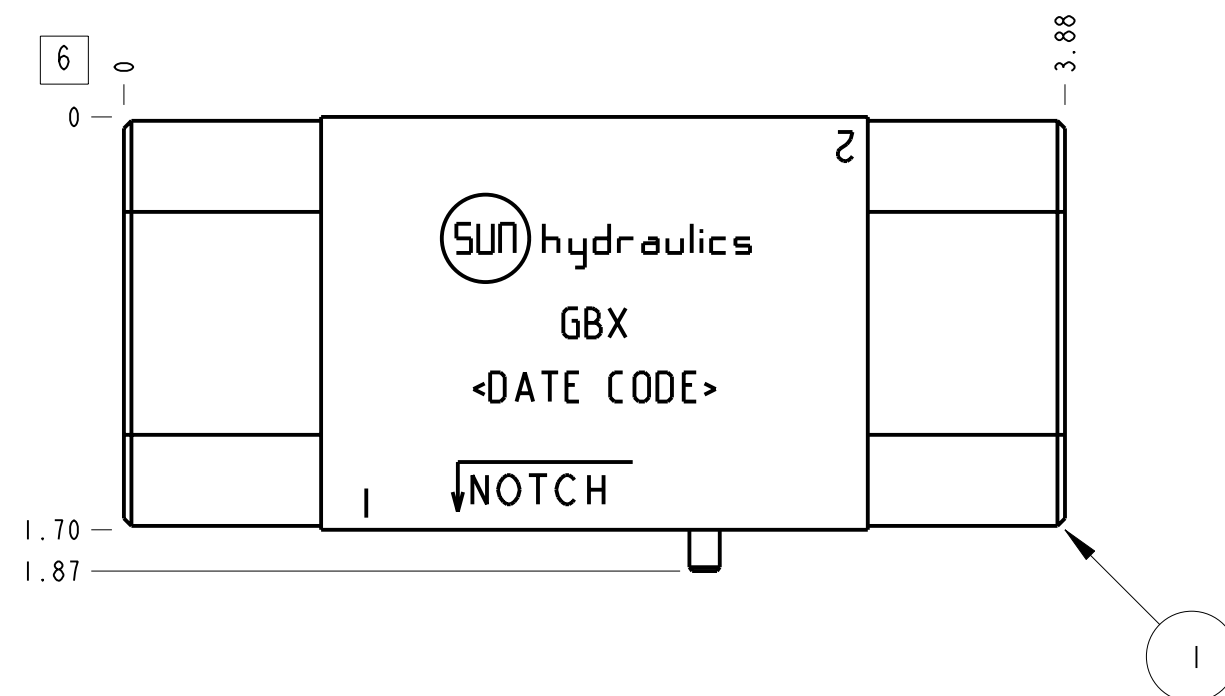
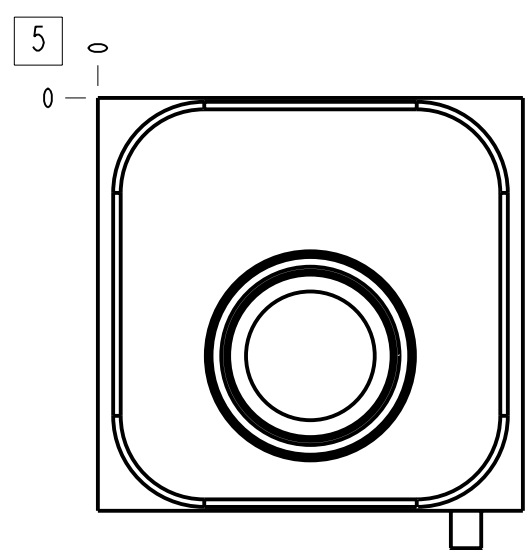
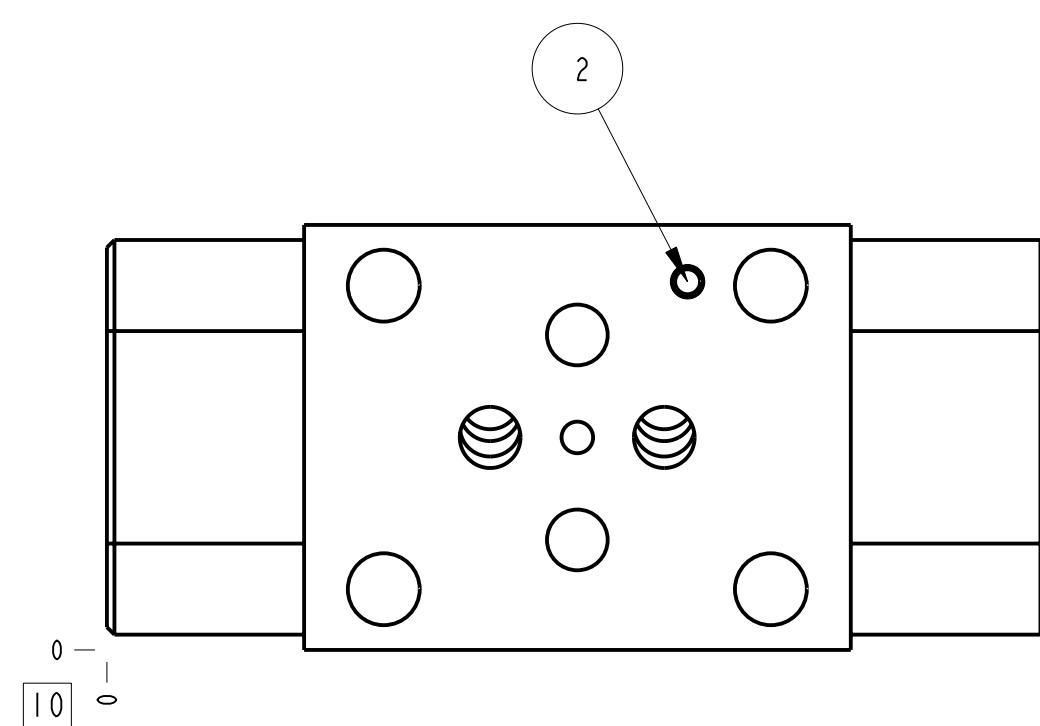


Technical Data	U.S. Units	Metric Units
Cavity	T-13A	
Body Features	A and B to T	
Body Type	Sandwich	
Interface	ISO 03	
Open Cavity Quantity	2	
Stack Height	1.75 in.	44,5 mm
Weight	0.889 lb.	0,403 kg.
Seal Plate Included (see notes)	Yes	



Notes

1. Stack height value in technical data table includes seal retainer plate.
2. Important: Carefully consider the maximum system pressure. The pressure rating of the manifold is dependent on the manifold material, with the port type/size a secondary consideration. Manifolds constructed of aluminum are not rated for pressures higher than 3000 psi (210 bar), regardless of the port type/size specified.
3. This drawing is for reference only. It is generated by an automated process and does not fall under Sun's document control process.
4. Items without balloons are shipped loose.



4	700-002			SEAL PLATE	1
3	500-001-012			O-RING	4
2	811-001-006		LOW CARBON STEEL	PIN	1
1	150-294		6061-T6 ALUMINUM	BODY	1
ITEM	PART NO.	SETTING	MATERIAL	PART NAME	QTY

MODEL		GBX		ALL DIMENSIONS IN INCH VIEWS ARE THIRD ANGLE		FIRST ANGLE		THIRD ANGLE	
DESCRIPTION		T-13A Sandwich ISO 03 A and B to T		DATE	SCALE	DWG SIZE	SHEET		
				Oct-16-24	1.265	C	1		