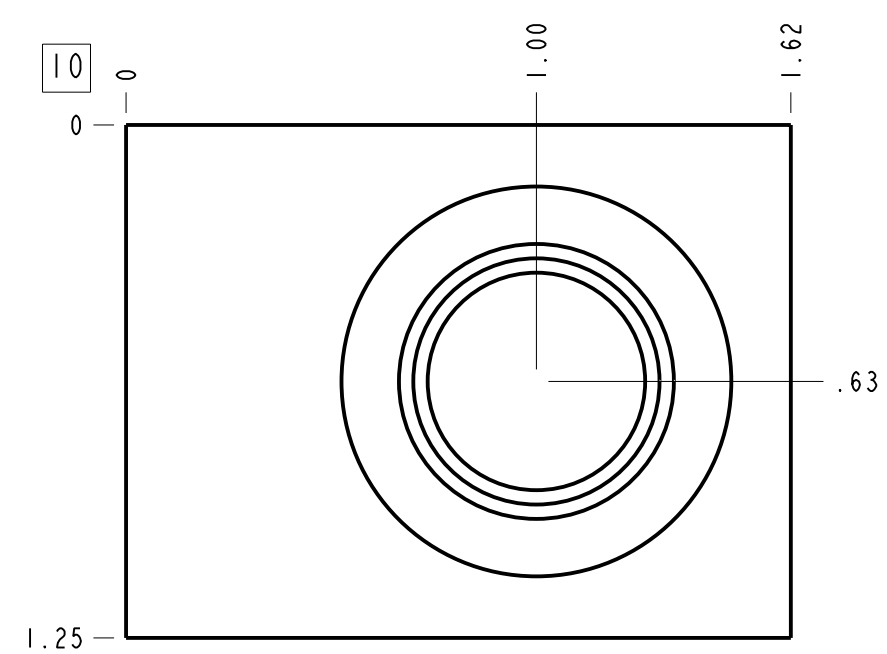
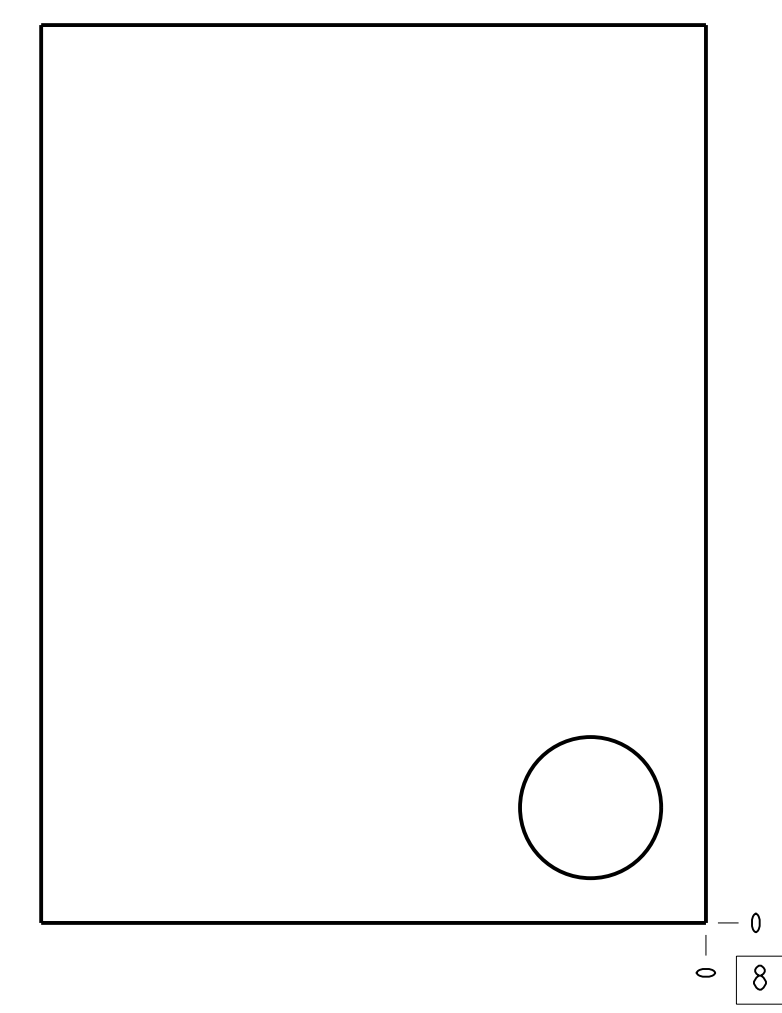
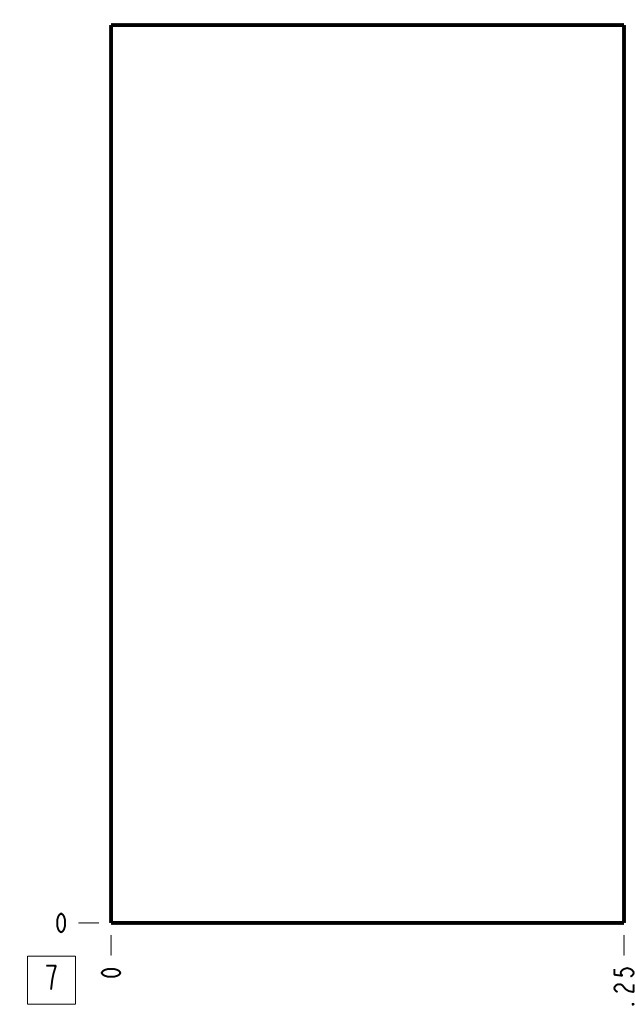
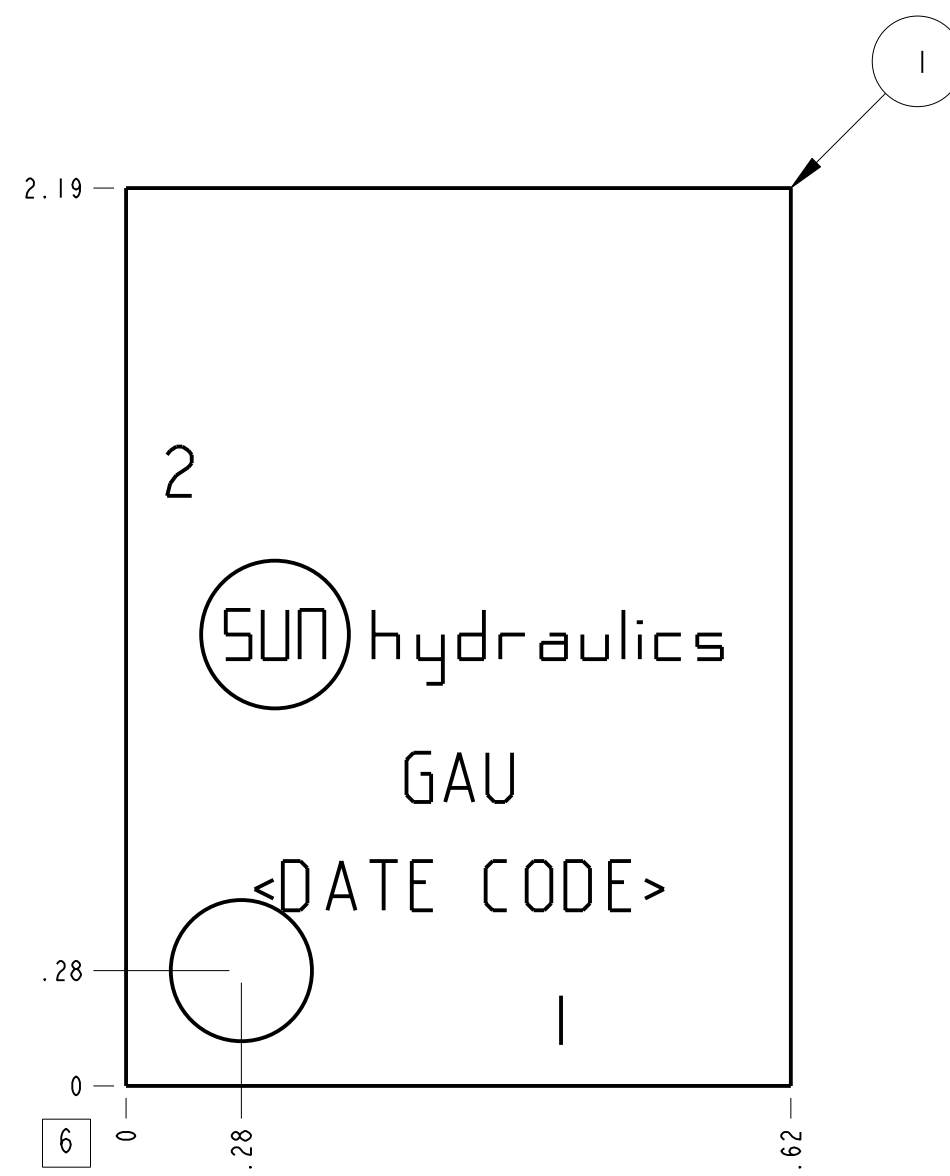
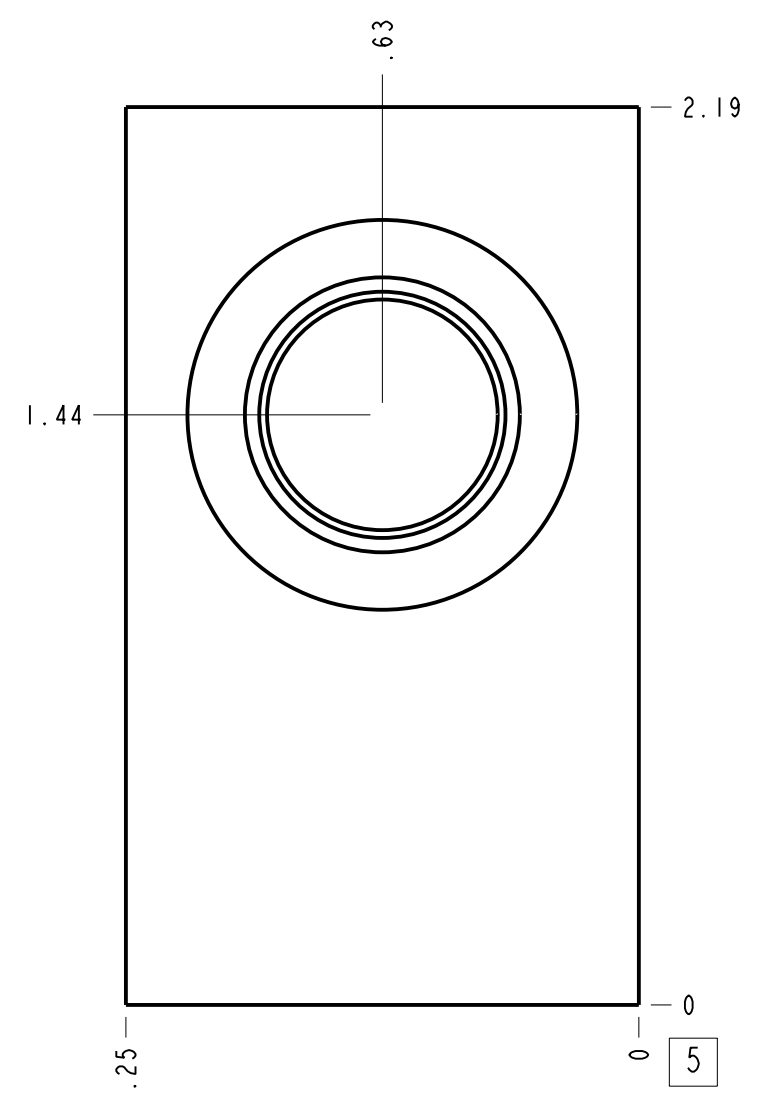
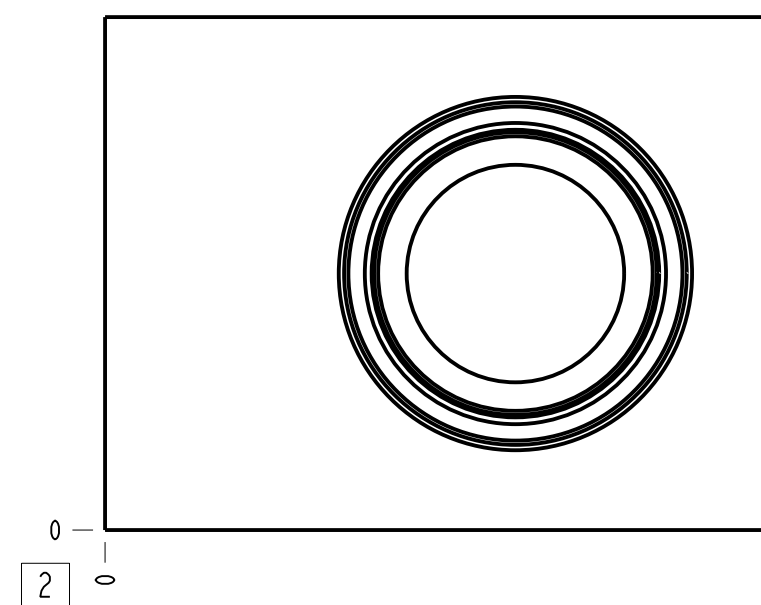


Technical Data	U.S. Units	Metric Units
Cavity	T-13A	
Body Features	Ninety degree	
Body Type	Line mount	
Interface	None	
Open Cavity Quantity	1	
Weight	0.321 lb.	0,146 kg.
Mounting Hole Diameter	.34 in.	8.6 mm
Mounting Hole Depth	Through	
Mounting Hole Quantity	1	



Notes

- Important: Carefully consider the maximum system pressure. The pressure rating of the manifold is dependent on the manifold material, with the port type/size a secondary consideration. Manifolds constructed of aluminum are not rated for pressures higher than 3000 psi (210 bar), regardless of the port type/size specified.
- This drawing is for reference only. It is generated by an automated process and does not fall under Sun's document control process.

Port Headings		
Product	Port	Size
GAU	All Ports	3/8" BSPP

ITEM	150-421-006	6061-T6 ALUMINUM	BODY	1
MODEL	GAU	ALL DIMENSIONS IN INCH VIEWS ARE THIRD ANGLE		QTY
DESCRIPTION	T-13A Line mount Ninety degree	SCALE	DWG SIZE	SHEET
	DATE			
	Jul-13-23	2.137	C	1

