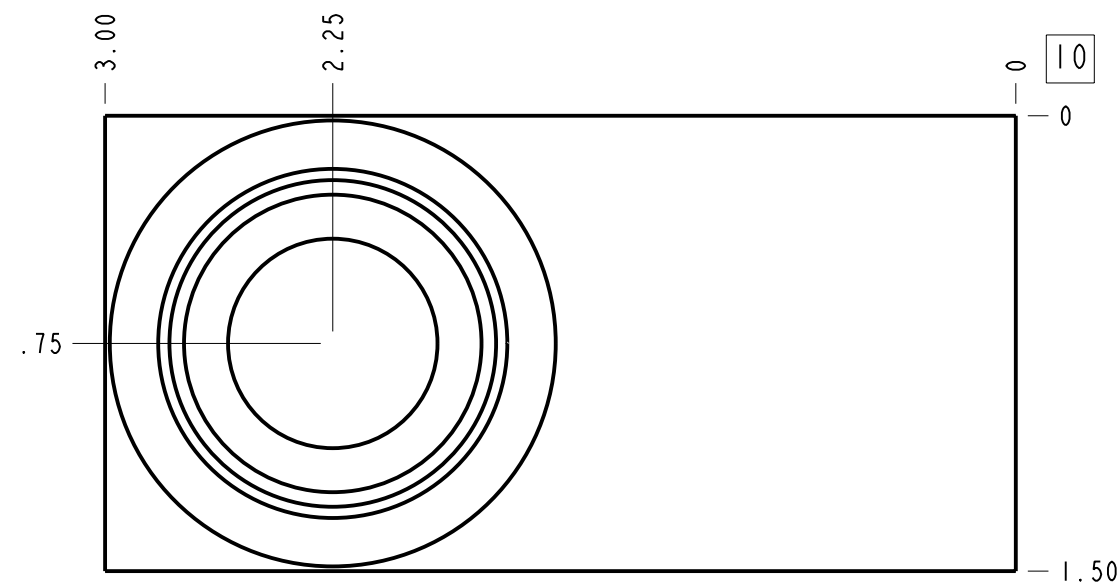
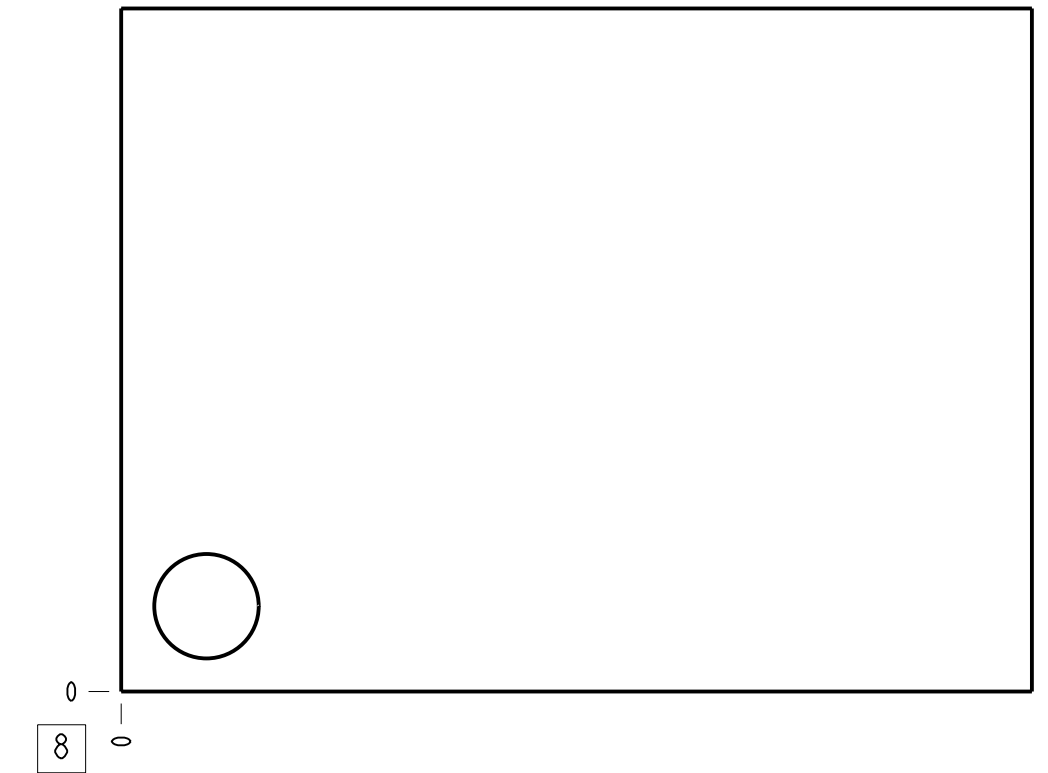
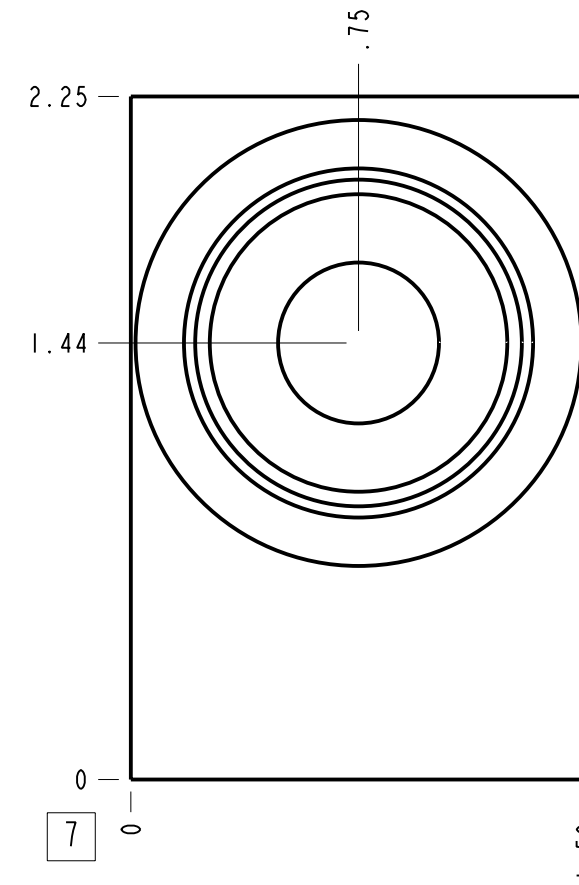
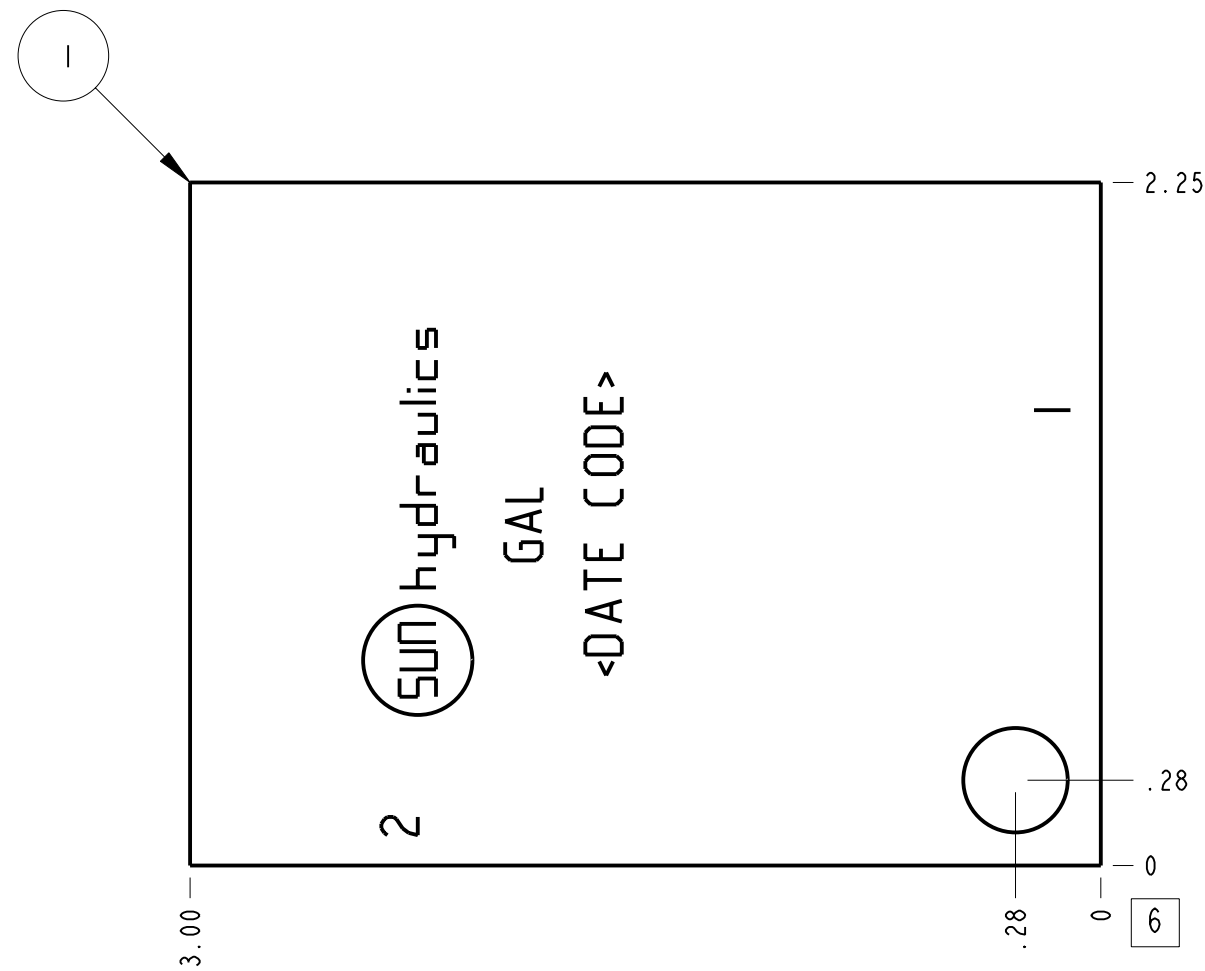
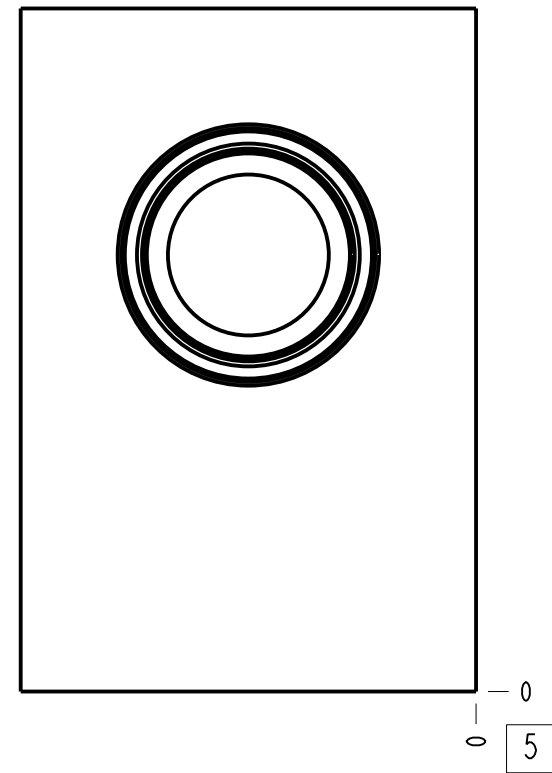


Technical Data	U.S. Units	Metric Units
Cavity		T-13A
Body Features		Ninety degree
Body Type		Line mount
Interface		None
Open Cavity Quantity		1
Weight	0.745 lb.	0.338 kg.
Mounting Hole Diameter	.34 in.	8.6 mm
Mounting Hole Depth		Through
Mounting Hole Quantity		1



**Notes**

- Important: Carefully consider the maximum system pressure. The pressure rating of the manifold is dependent on the manifold material, with the port type/size a secondary consideration. Manifolds constructed of aluminum are not rated for pressures higher than 3000 psi (210 bar), regardless of the port type/size specified.
- This drawing is for reference only. It is generated by an automated process and does not fall under Sun's document control process.

Port Headings		
Product	Port	Size
GAL	All Ports	SAE 12

ITEM	154-559-004		6061-T6 ALUMINUM	BODY	1
MODEL	GAL		ALL DIMENSIONS IN INCH VIEWS ARE THIRD ANGLE		QTY
DESCRIPTION	T-13A Line mount Ninety degree	DATE	SCALE	DWG SIZE	SHEET
		May-30-24	1.581	C	1

