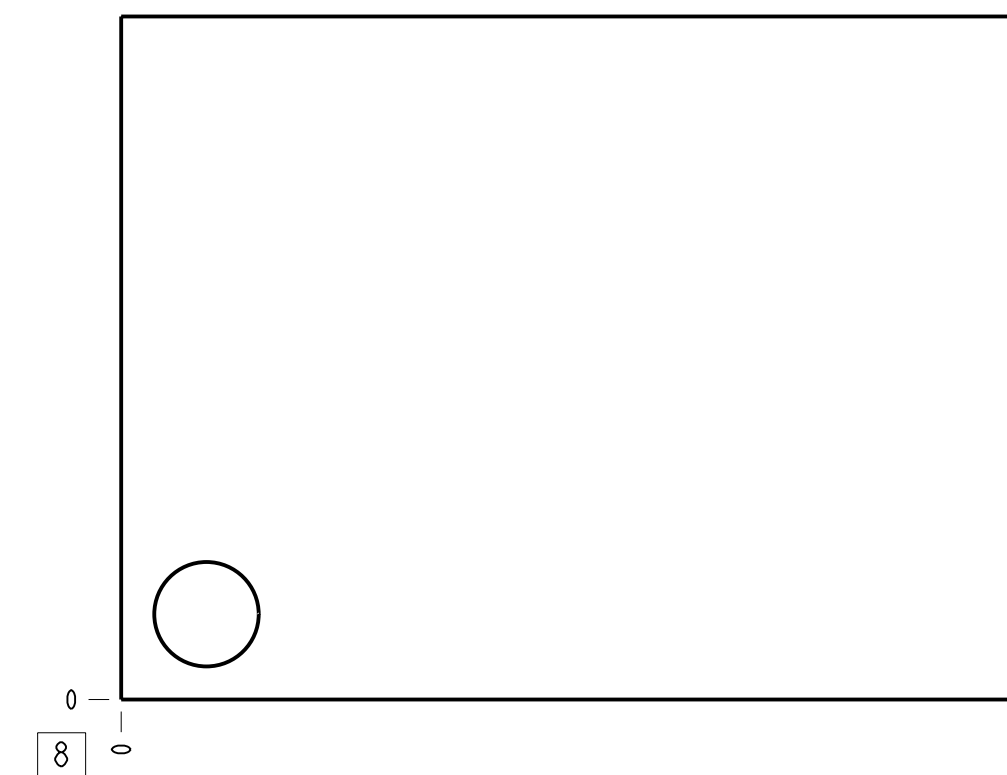
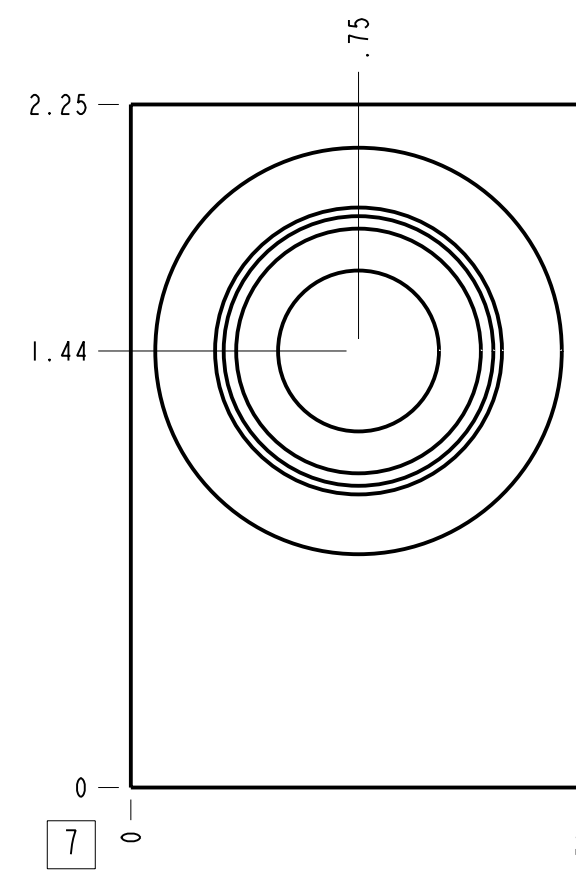
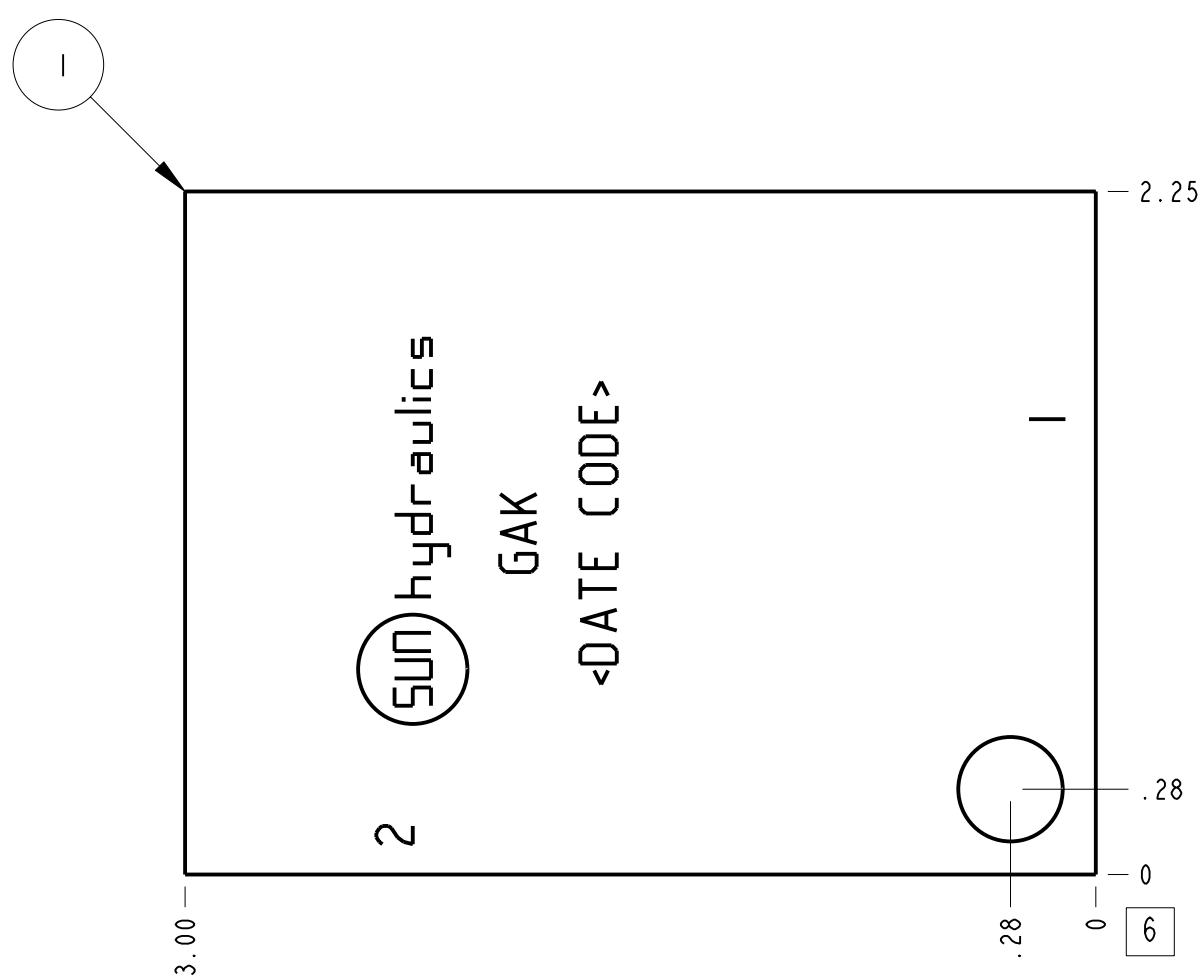
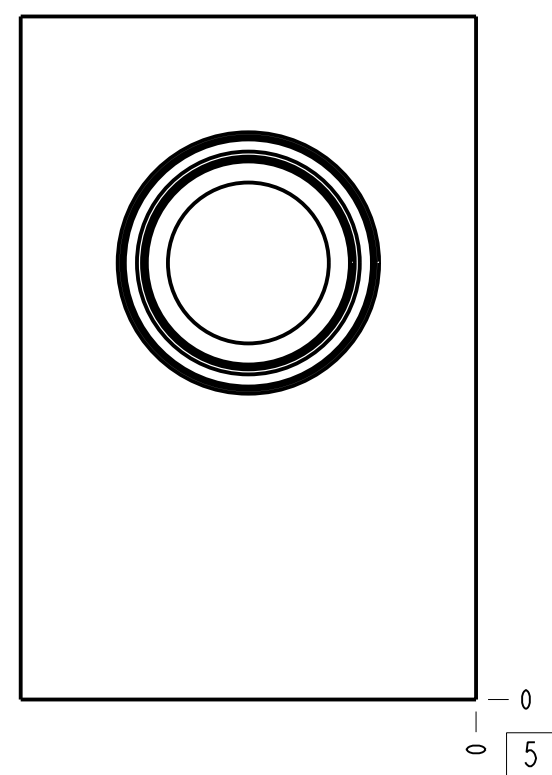
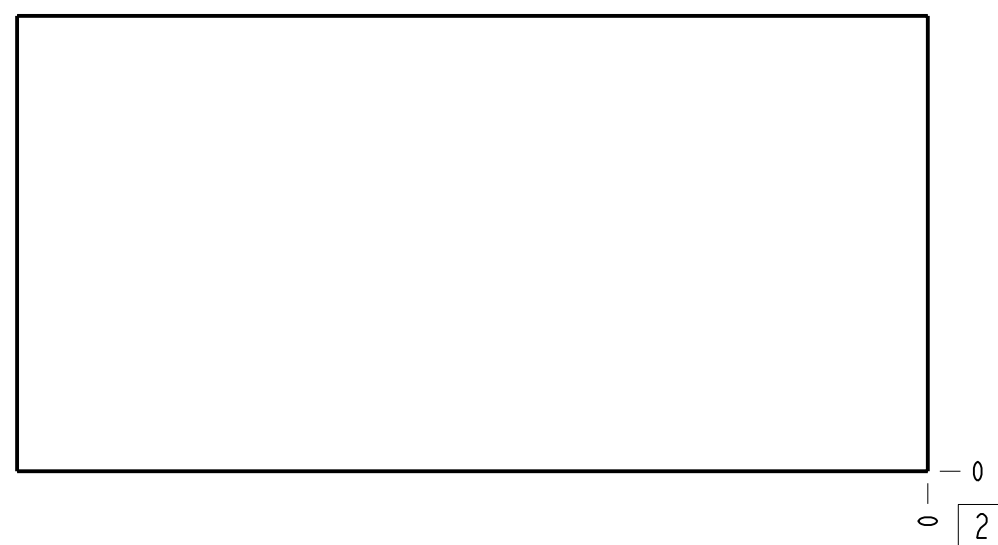
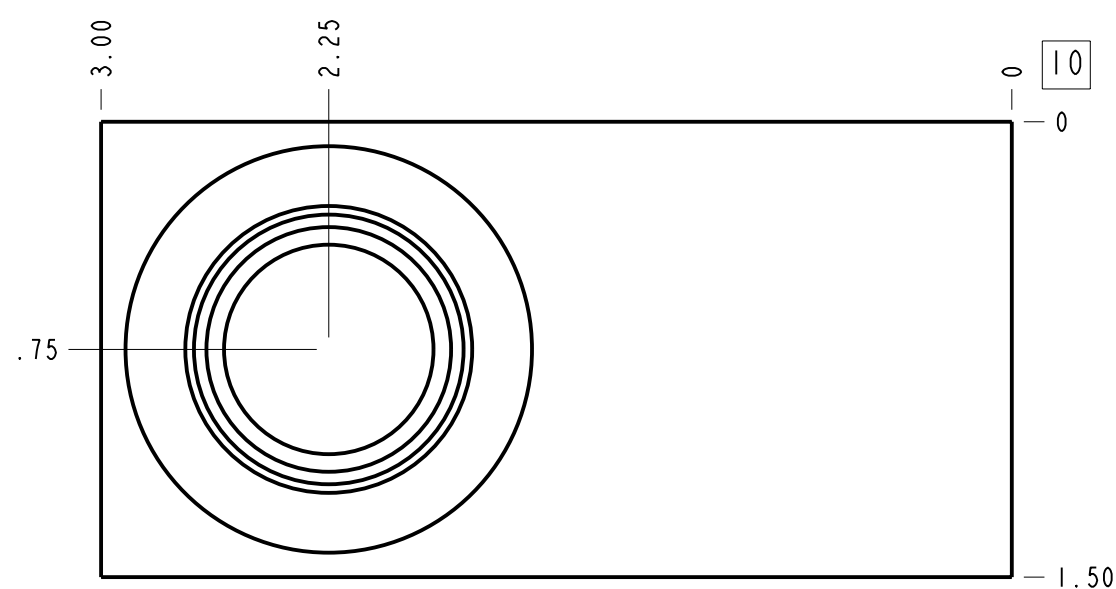


Technical Data	U.S. Units	Metric Units
Cavity		T-13A
Body Features		Ninety degree
Body Type		Line mount
Interface		None
Open Cavity Quantity		1
Weight	0.798 lb.	0.362 kg.
Mounting Hole Diameter	.34 in.	8.6 mm
Mounting Hole Depth		Through
Mounting Hole Quantity		1



Notes

- Important: Carefully consider the maximum system pressure. The pressure rating of the manifold is dependent on the manifold material, with the port type/size a secondary consideration. Manifolds constructed of aluminum are not rated for pressures higher than 3000 psi (210 bar), regardless of the port type/size specified.
- This drawing is for reference only. It is generated by an automated process and does not fall under Sun's document control process.



Port Headings		
Product	Port	Size
GAK	All Ports	SAE 10

ITEM	154-559-003		6061-T6 ALUMINUM	BODY	1
	PART NO.	SETTING	MATERIAL	PART NAME	QTY
MODEL	GAK		ALL DIMENSIONS IN INCH VIEWS ARE THIRD ANGLE		FIRST ANGLE THIRD ANGLE
DESCRIPTION	T-13A Line mount Ninety degree	DATE Jul-22-24	SCALE 1.581	DWG SIZE C	SHEET 1

