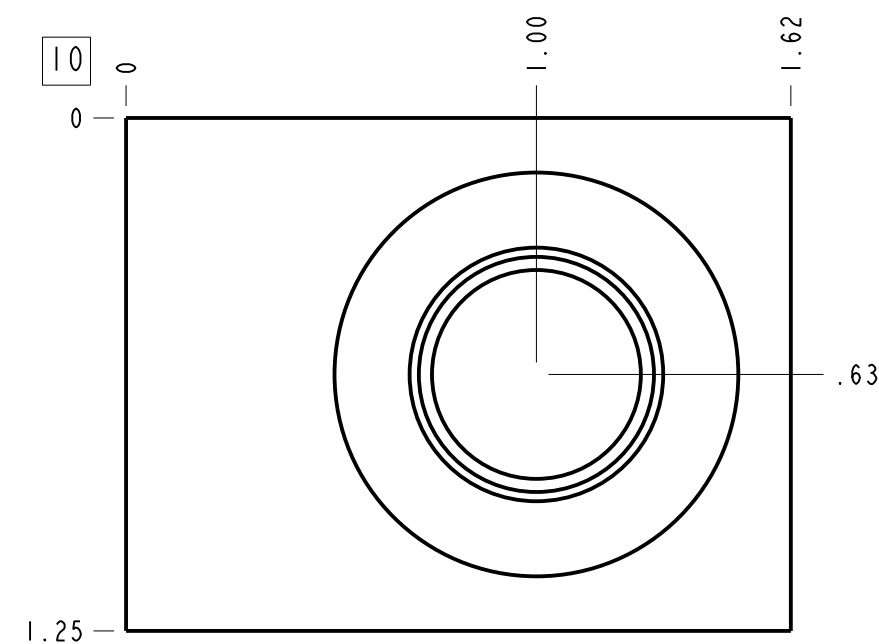
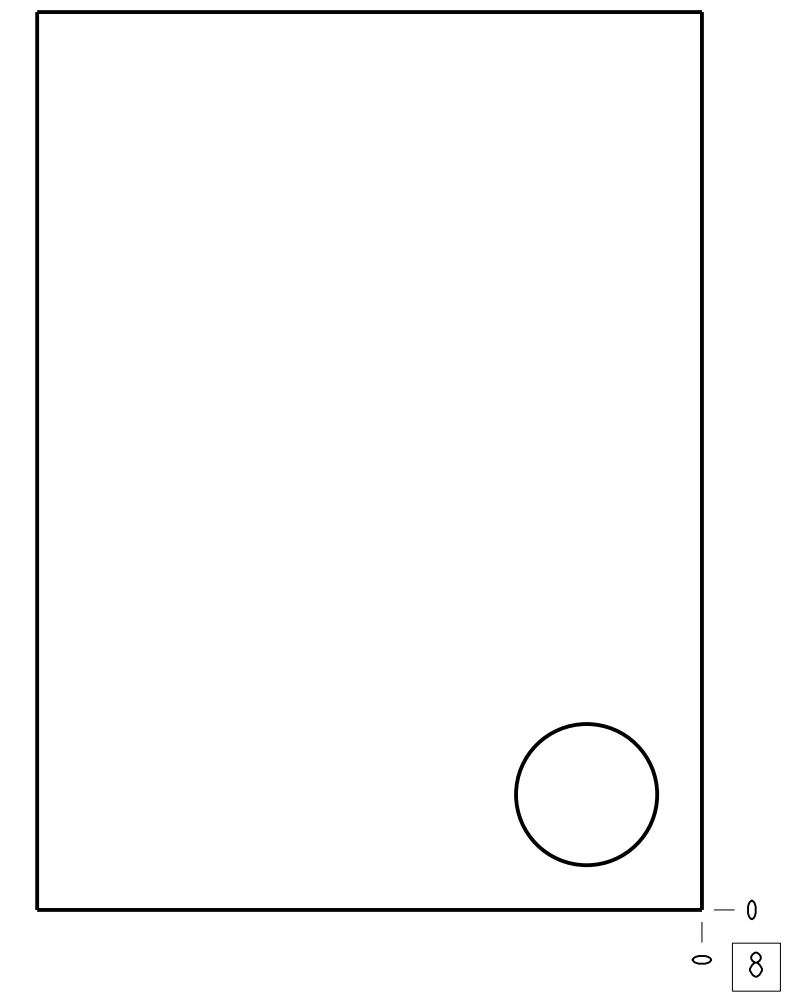
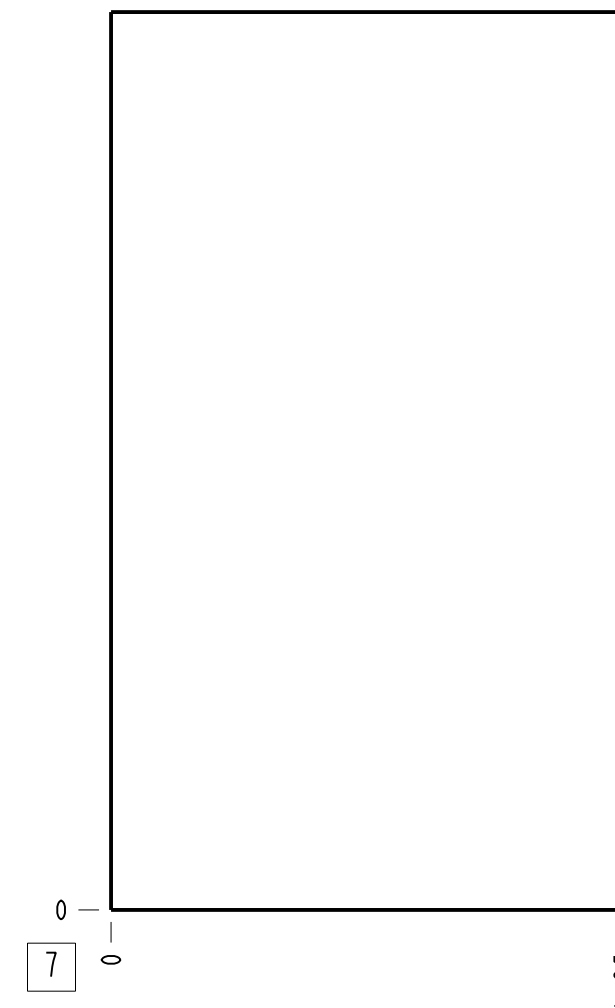
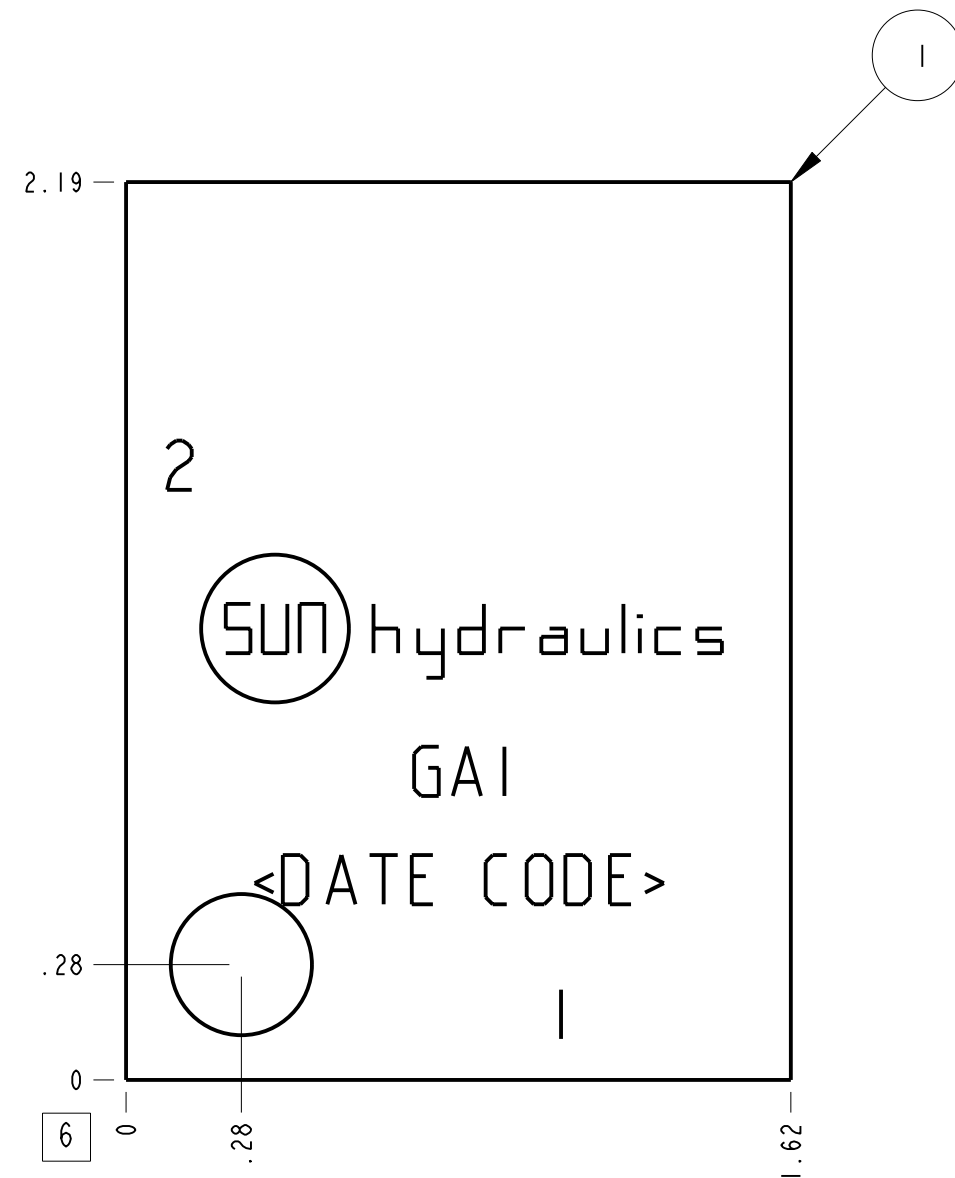
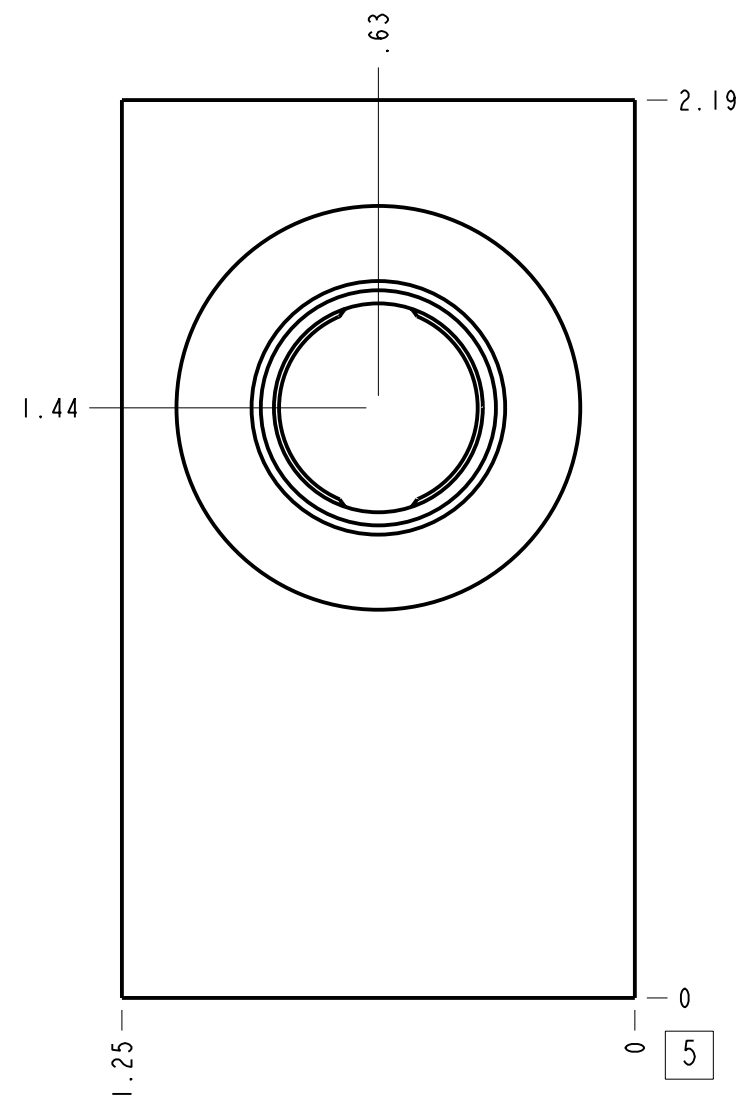
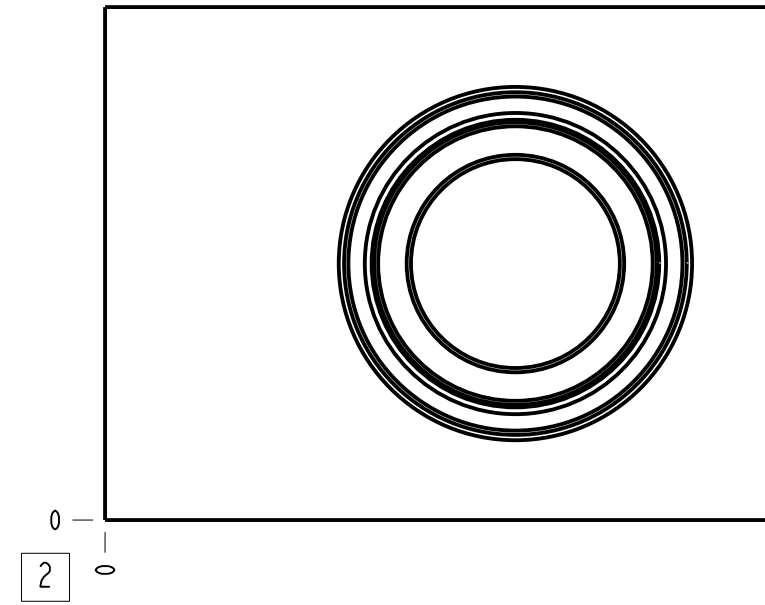


| Technical Data         | U.S. Units    | Metric Units |
|------------------------|---------------|--------------|
| Cavity                 | T-13A         |              |
| Body Features          | Ninety degree |              |
| Body Type              | Line mount    |              |
| Interface              | None          |              |
| Open Cavity Quantity   | 1             |              |
| Weight                 | 0.329 lb.     | 0.149 kg.    |
| Mounting Hole Diameter | .34 in.       | 8.6 mm       |
| Mounting Hole Depth    | Through       |              |
| Mounting Hole Quantity | 1             |              |



**Notes**

- Important: Carefully consider the maximum system pressure. The pressure rating of the manifold is dependent on the manifold material, with the port type/size a secondary consideration. Manifolds constructed of aluminum are not rated for pressures higher than 3000 psi (210 bar), regardless of the port type/size specified.
- This drawing is for reference only. It is generated by an automated process and does not fall under Sun's document control process.

| Port Headings |           |       |
|---------------|-----------|-------|
| Product       | Port      | Size  |
| GAI           | All Ports | SAE 6 |

|                  |                                   |                   |   |               |                            |
|------------------|-----------------------------------|-------------------|---|---------------|----------------------------|
| I                | 150-421-003                       | 6061-T6 ALUMINUM  | BODY  | I             |                            |
| I<br>T<br>E<br>M | PART NO.                          | SETTING           | MATERIAL  | PART NAME     | Q<br>T<br>Y                |
| MODEL            | GAI                               |                   | ALL DIMENSIONS IN INCH<br>VIEWS ARE THIRD ANGLE |               | FIRST ANGLE<br>THIRD ANGLE |
| DESCRIPTION      | T-13A Line mount<br>Ninety degree | DATE<br>Jun-02-23 | SCALE<br>2.137                                  | DWG SIZE<br>C | SHEET<br>1                 |

