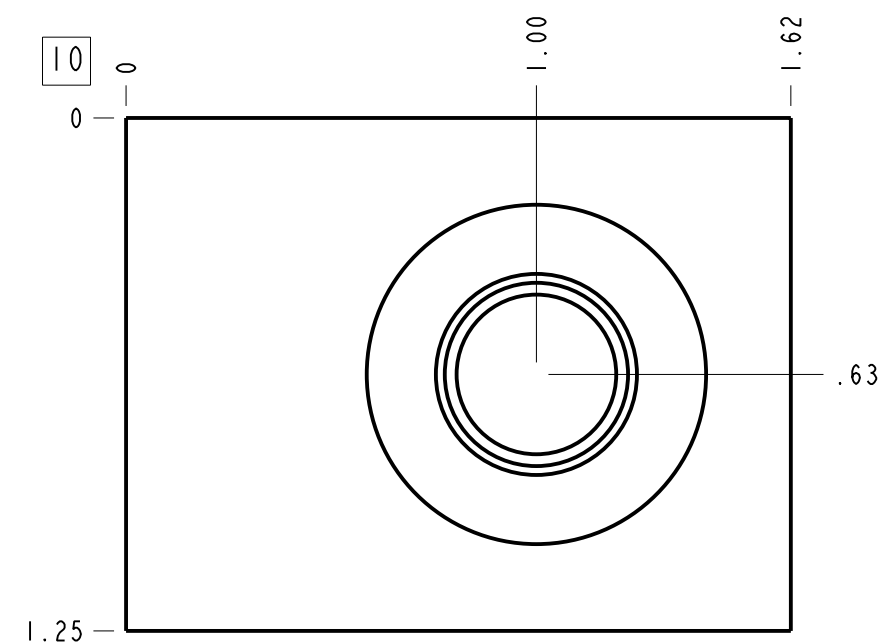
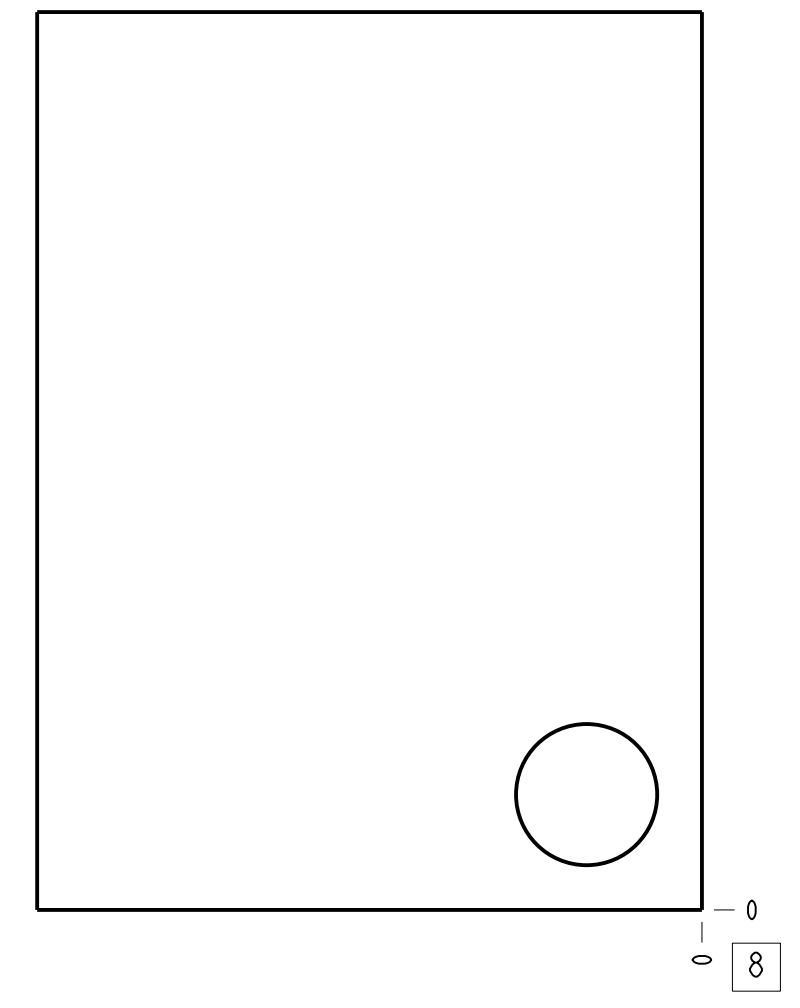
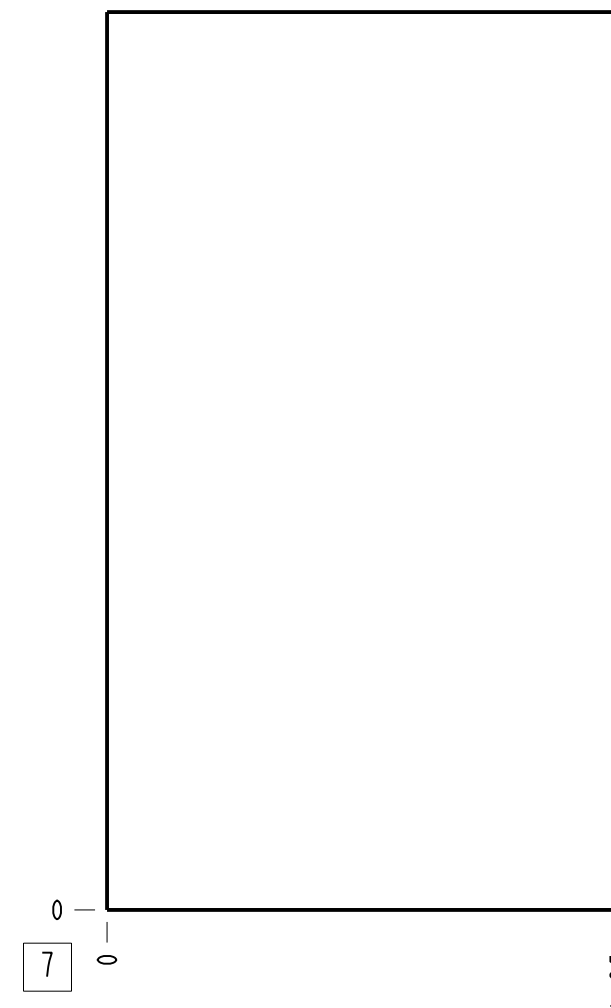
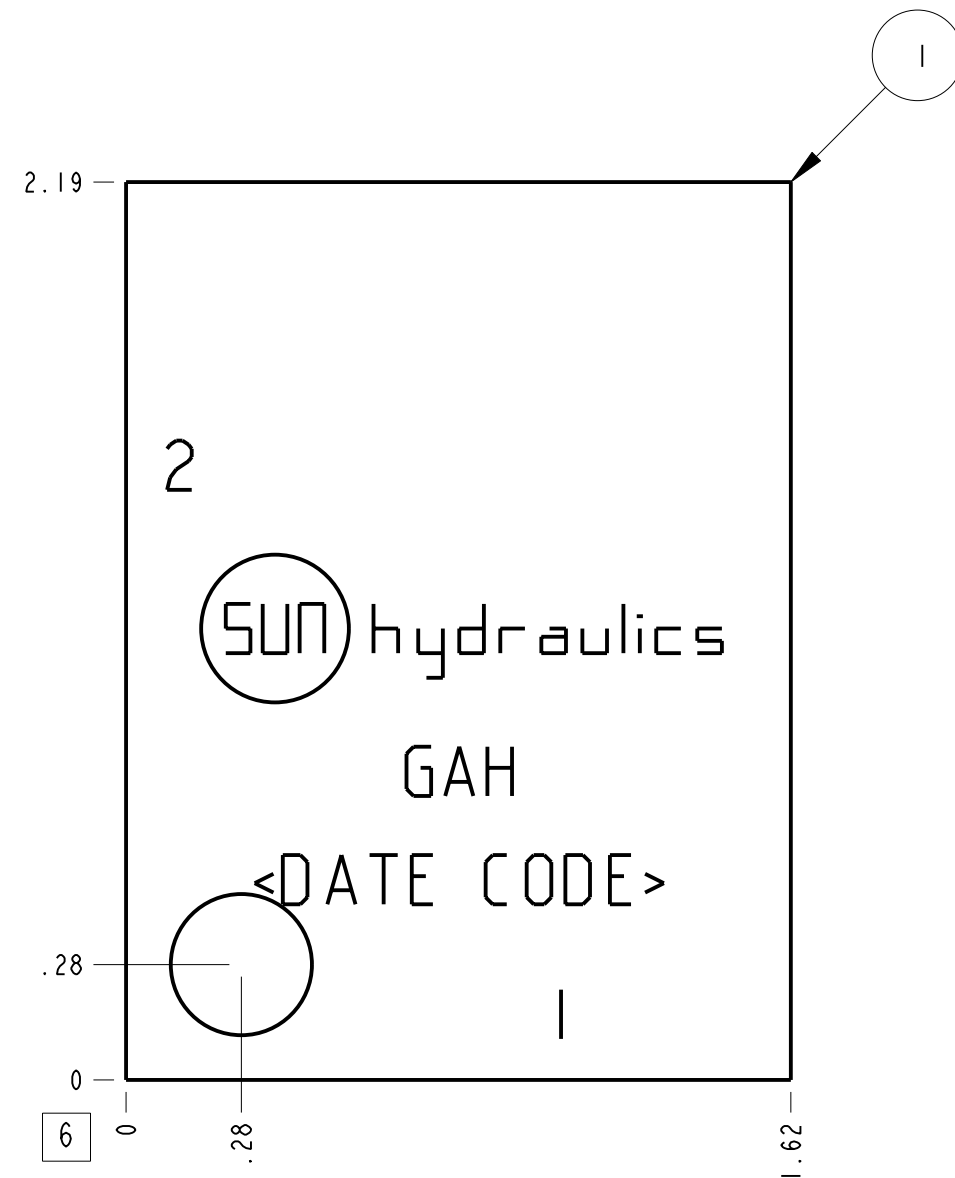
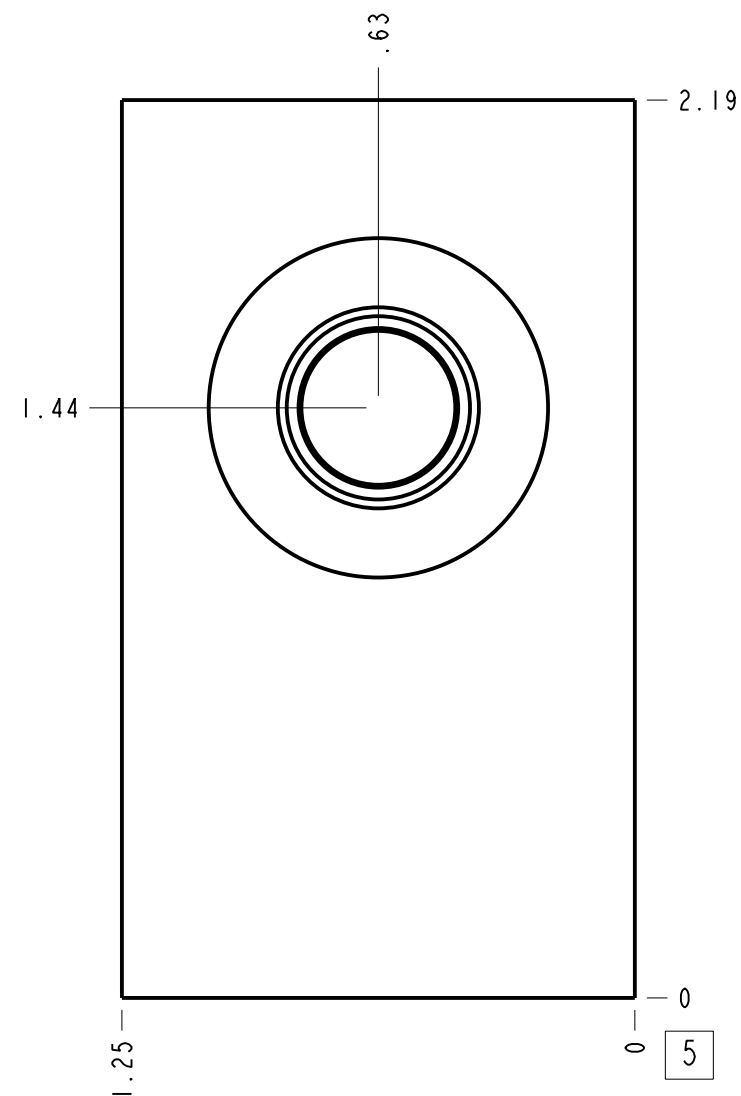
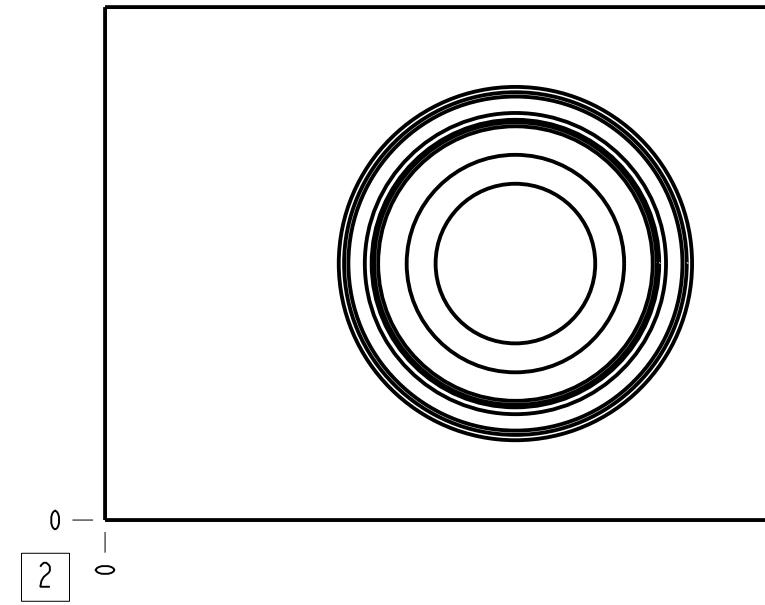


Technical Data	U.S. Units	Metric Units
Cavity	T-13A	
Body Features	Ninety degree	
Body Type	Line mount	
Interface	None	
Open Cavity Quantity	1	
Weight	0.340 lb.	0,154 kg.
Mounting Hole Diameter	.34 in.	8.6 mm
Mounting Hole Depth	Through	
Mounting Hole Quantity	1	



Notes

- Important: Carefully consider the maximum system pressure. The pressure rating of the manifold is dependent on the manifold material, with the port type/size a secondary consideration. Manifolds constructed of aluminum are not rated for pressures higher than 3000 psi (210 bar), regardless of the port type/size specified.
- This drawing is for reference only. It is generated by an automated process and does not fall under Sun's document control process.

Port Headings		
Product	Port	Size
GAH	All Ports	SAE 4

I	150-421-007	6061-T6 ALUMINUM	BODY	I	
I T E M	PART NO.	SETTING	MATERIAL	PART NAME	Q T Y
MODEL	GAH		ALL DIMENSIONS IN INCH VIEWS ARE THIRD ANGLE		FIRST ANGLE THIRD ANGLE
DESCRIPTION	T-13A Line mount Ninety degree	DATE Feb-27-24	SCALE 2.137	DWG SIZE C	SHEET 1

