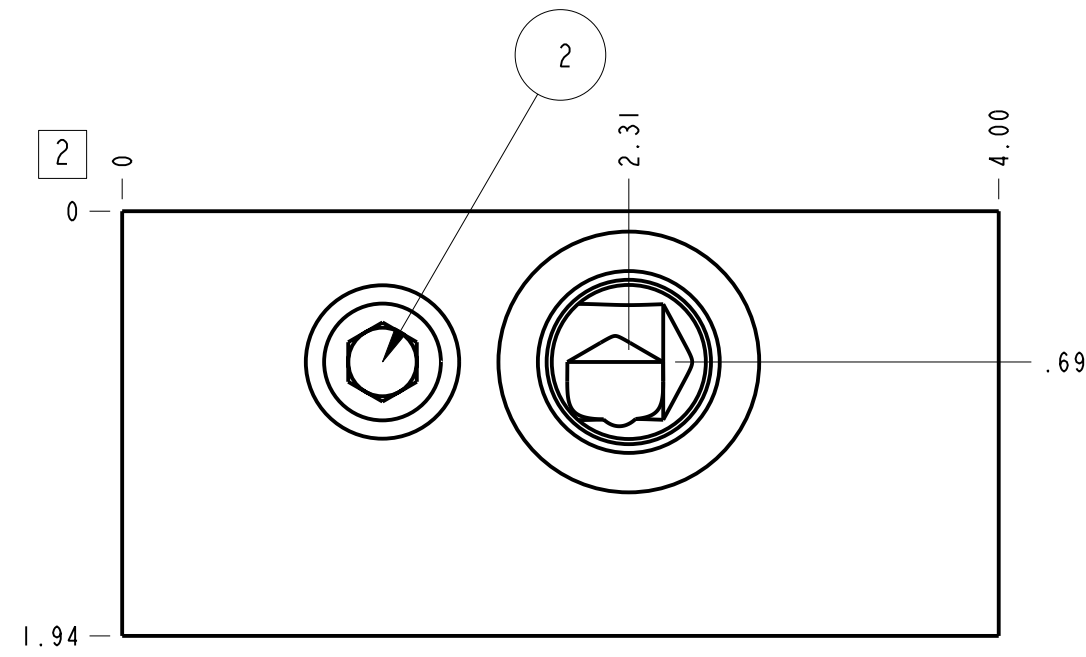
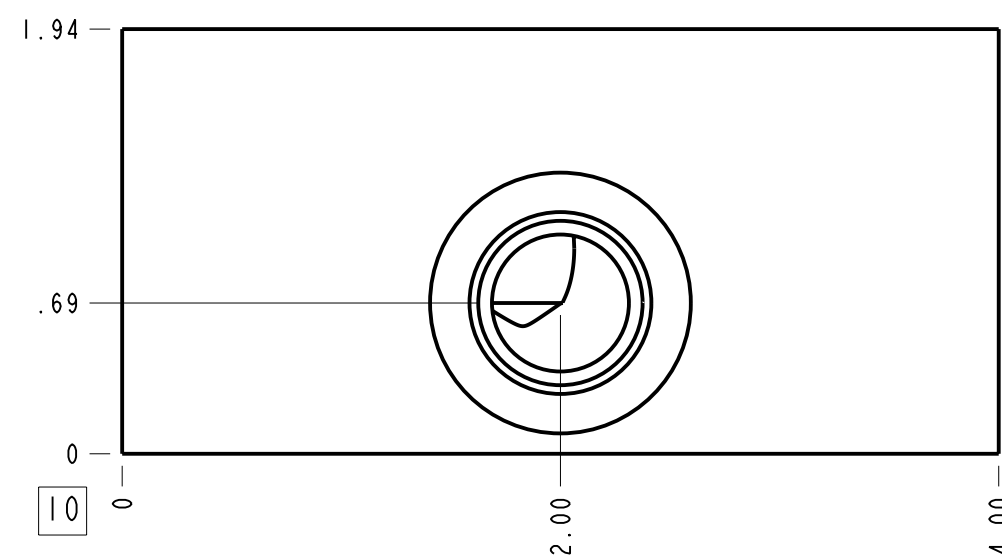
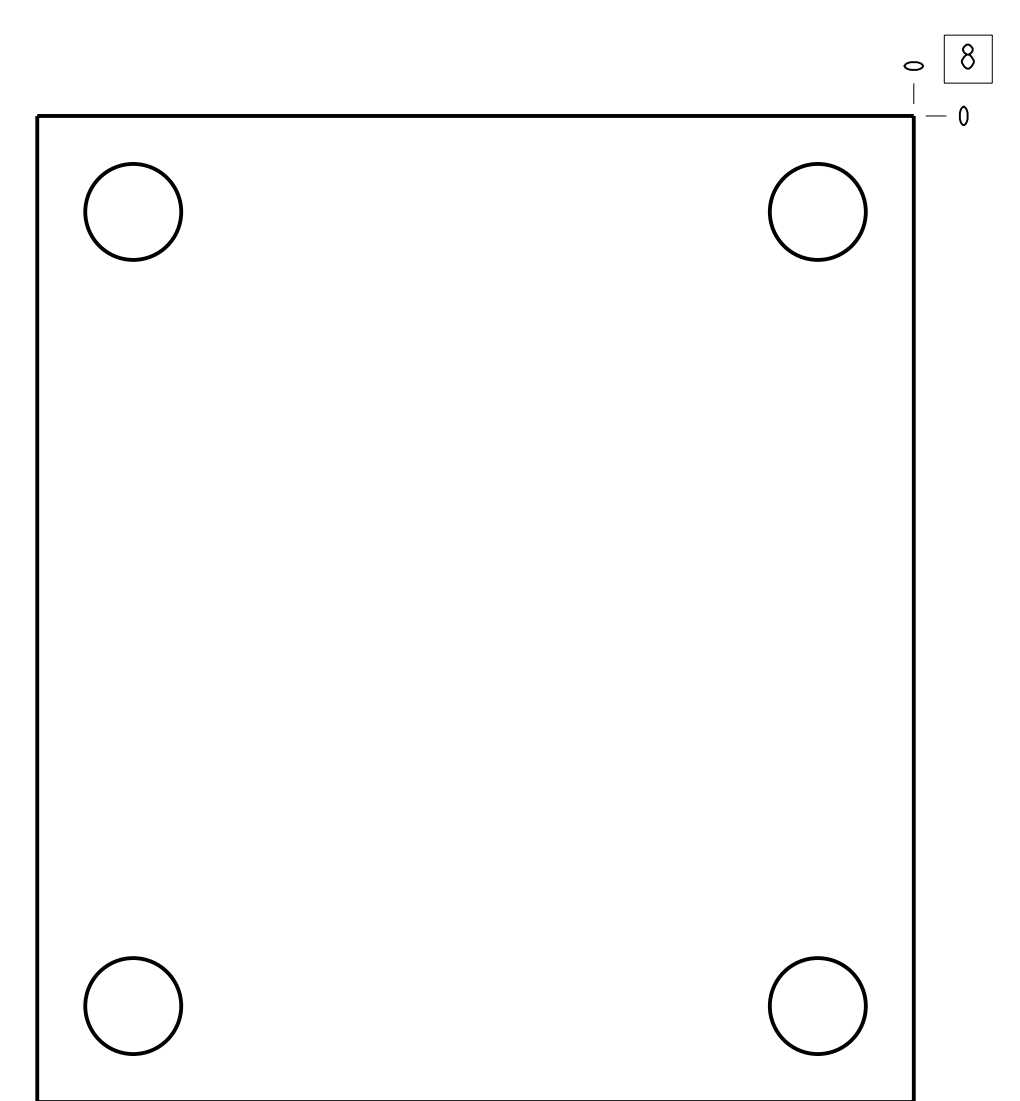
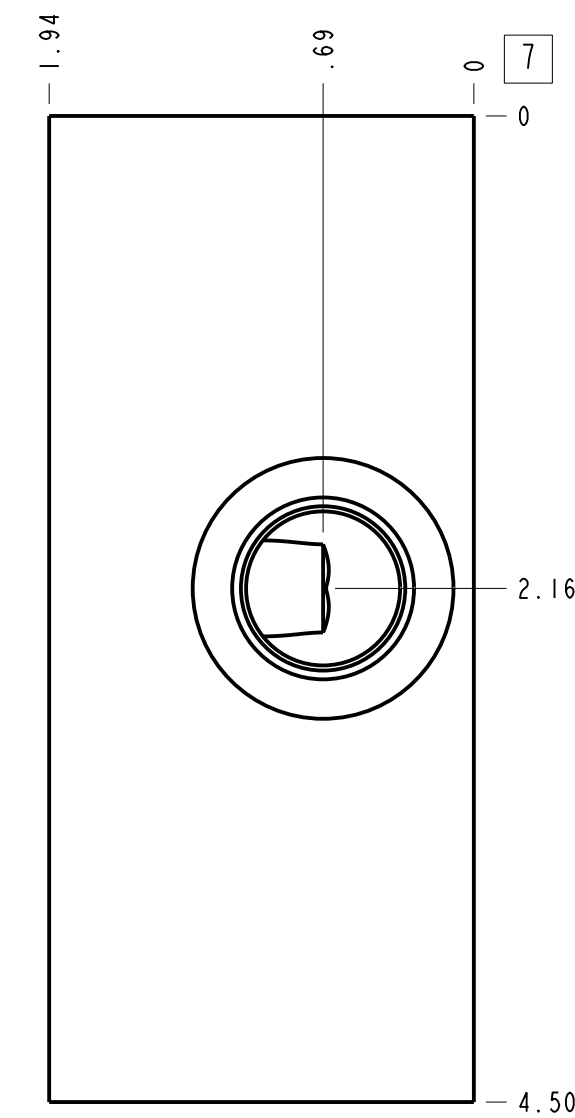
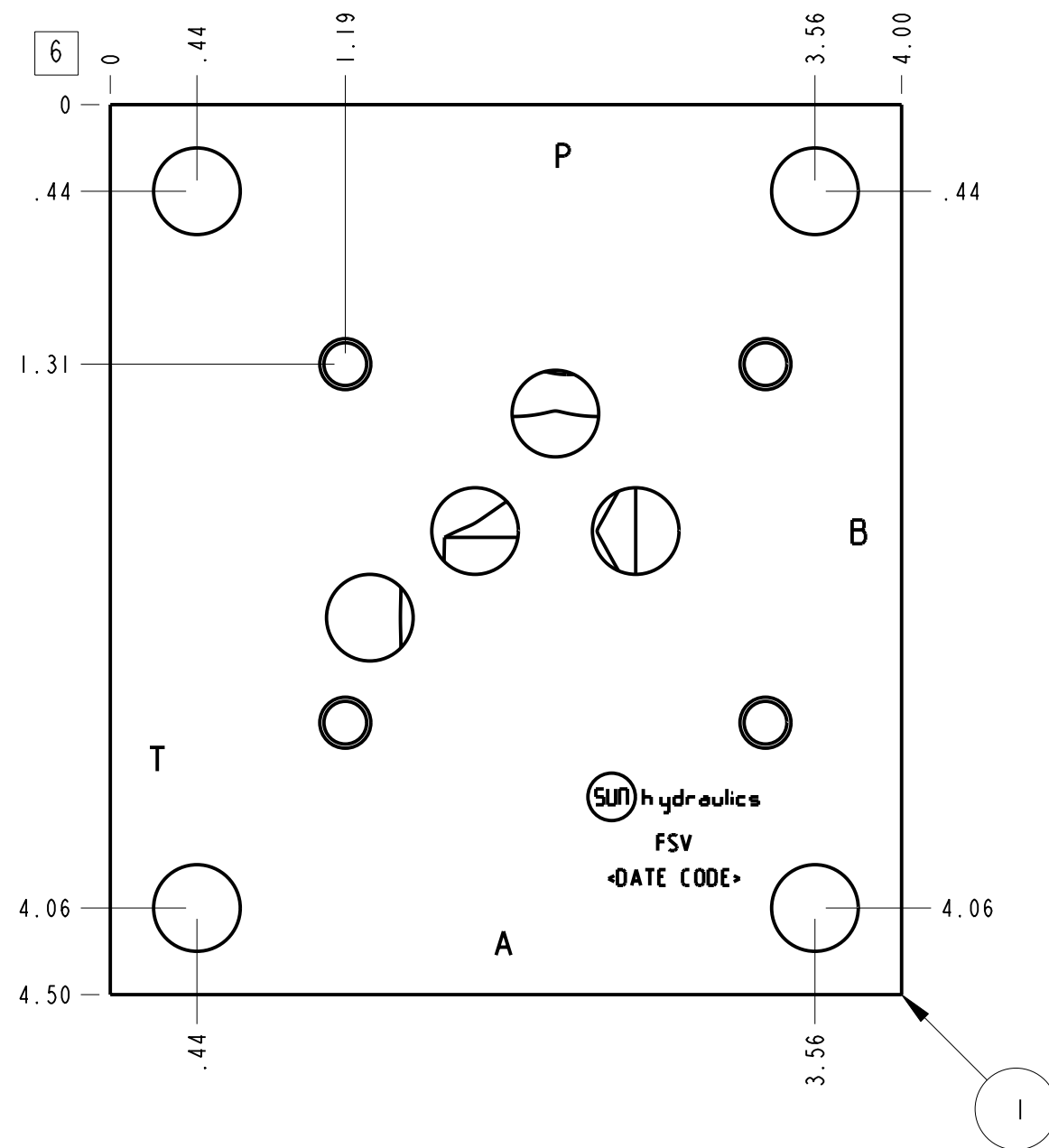
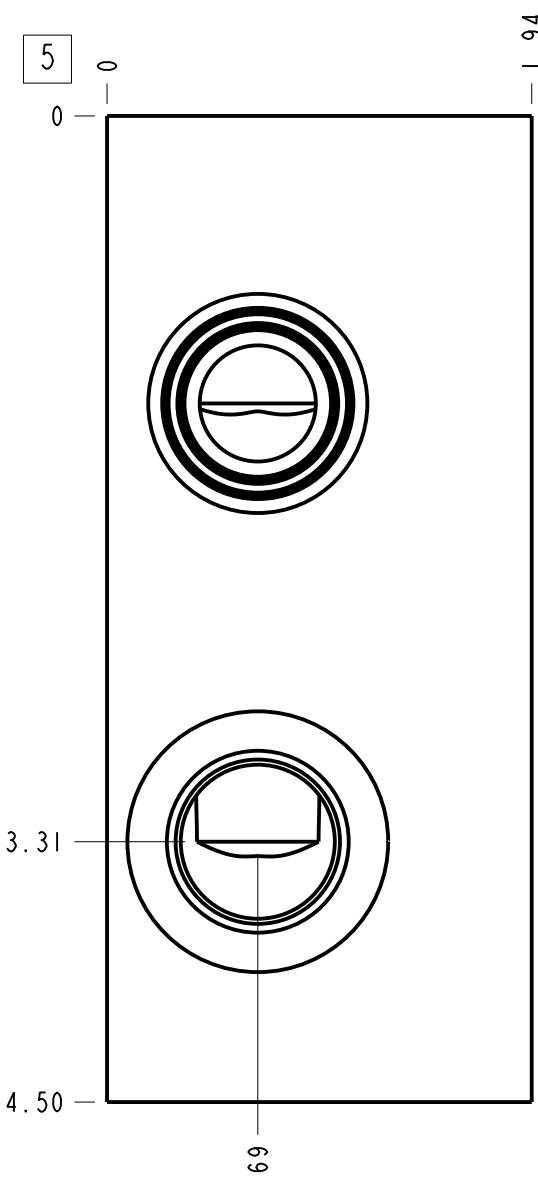


Relief P to T



Technical Data	U.S. Units	Metric Units
Cavity	T-10A	
Body Features	P to T, side ports	
Body Type	Subplate	
Interface	ISO 05	
Open Cavity Quantity	1	
Weight	2.826 lb.	1,282 kg.
Mounting Hole Diameter	.44 in.	11,1 mm
Mounting Hole Depth	Through	
Mounting Hole Quantity	4	



Notes

- Important: Carefully consider the maximum system pressure. The pressure rating of the manifold is dependent on the manifold material, with the port type/size a secondary consideration. Manifolds constructed of aluminum are not rated for pressures higher than 3000 psi (210 bar), regardless of the port type/size specified.
- This drawing is for reference only. It is generated by an automated process and does not fall under Sun's document control process.

Port Headings		
Product	Port	Size
FSV	Ports A, B, P, T	1/2" BSPP

2	340-004			PLUG-.375-18 NPTF	1		
1	151-114-003		6061-T6 ALUMINUM	BODY	1		
ITEM	PART NO.	SETTING	MATERIAL	PART NAME	QTY		
	MODEL			FSV	ALL DIMENSIONS IN INCH VIEWS ARE THIRD ANGLE	FIRST ANGLE THIRD ANGLE	
DESCRIPTION			T-10A Subplate ISO 05 P to T, side ports	DATE	SCALE	DWG SIZE	SHEET
				Oct-03-24	1.141	C	1

