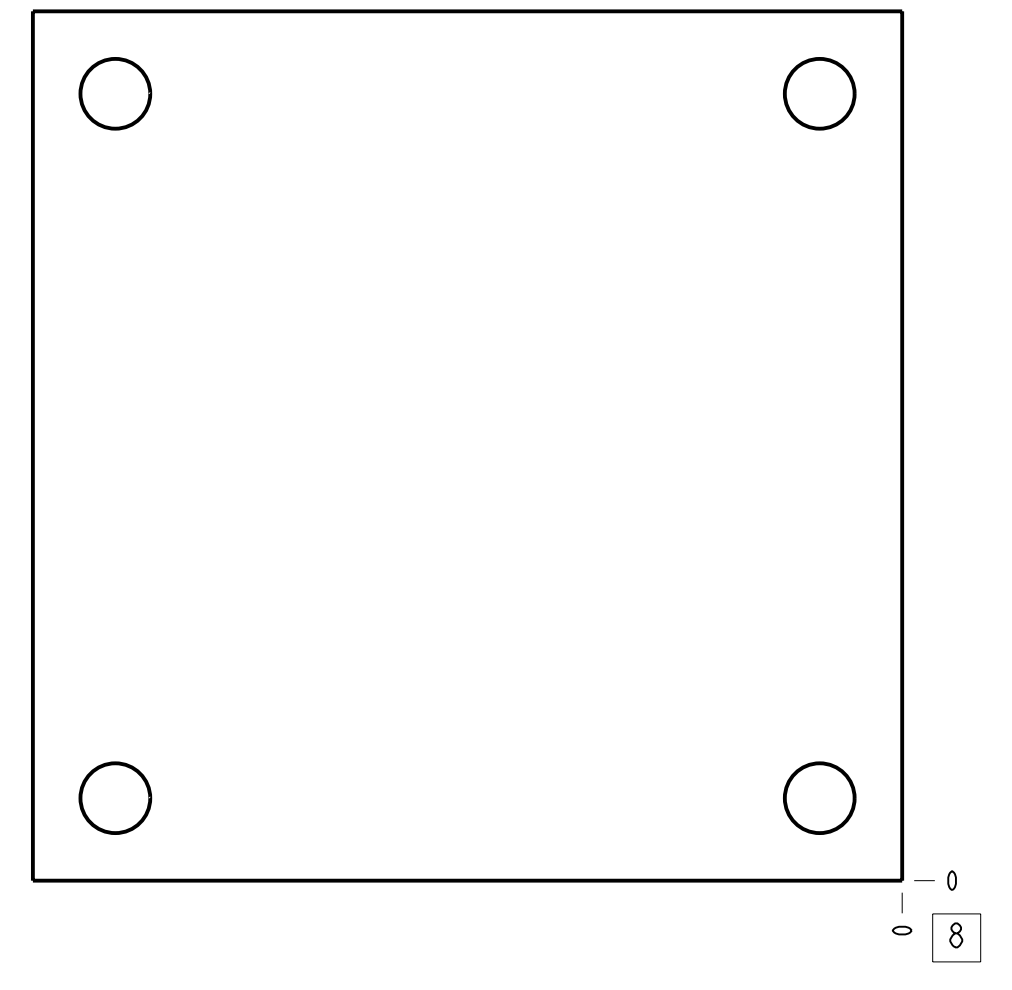
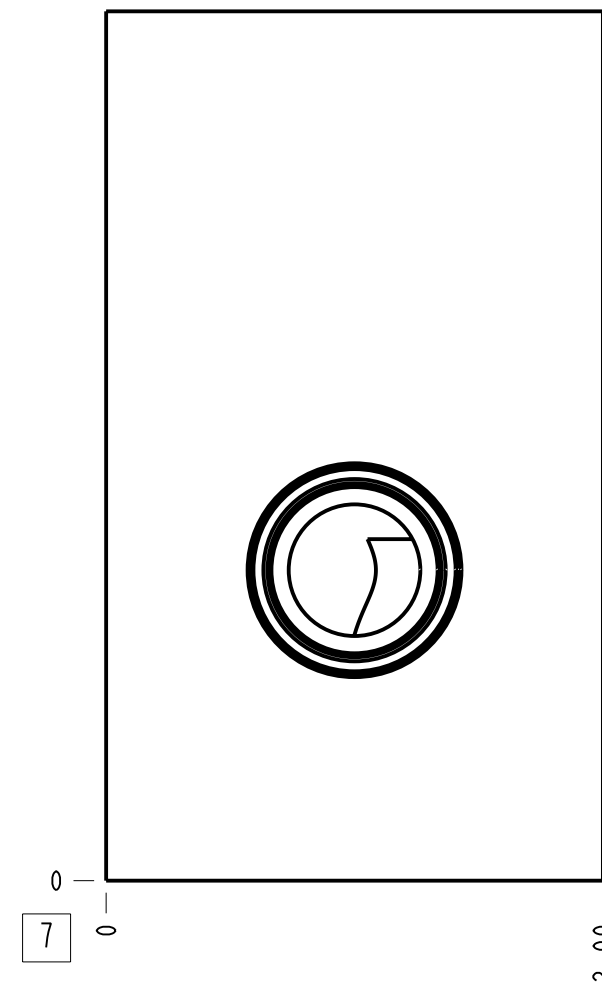
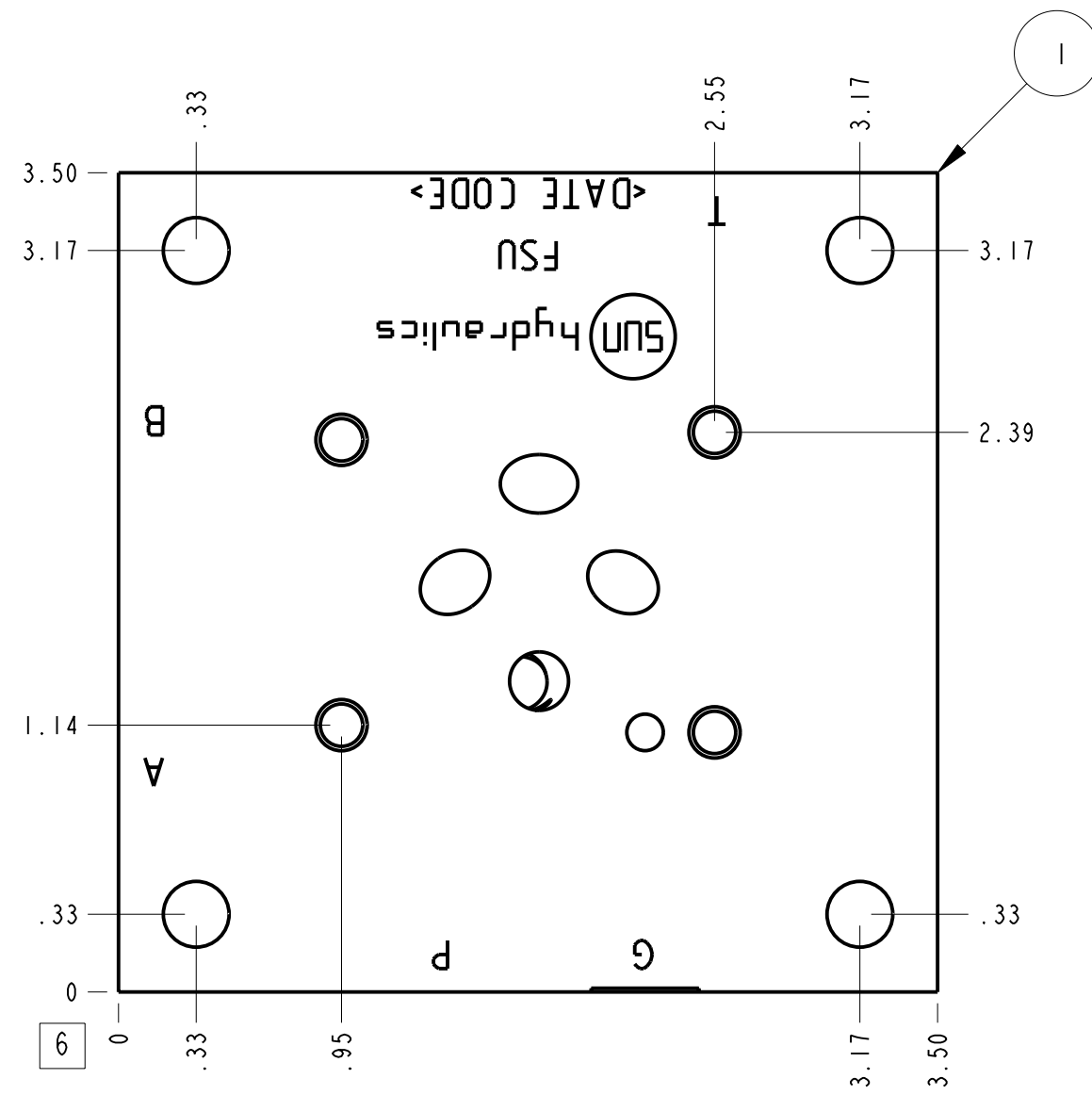
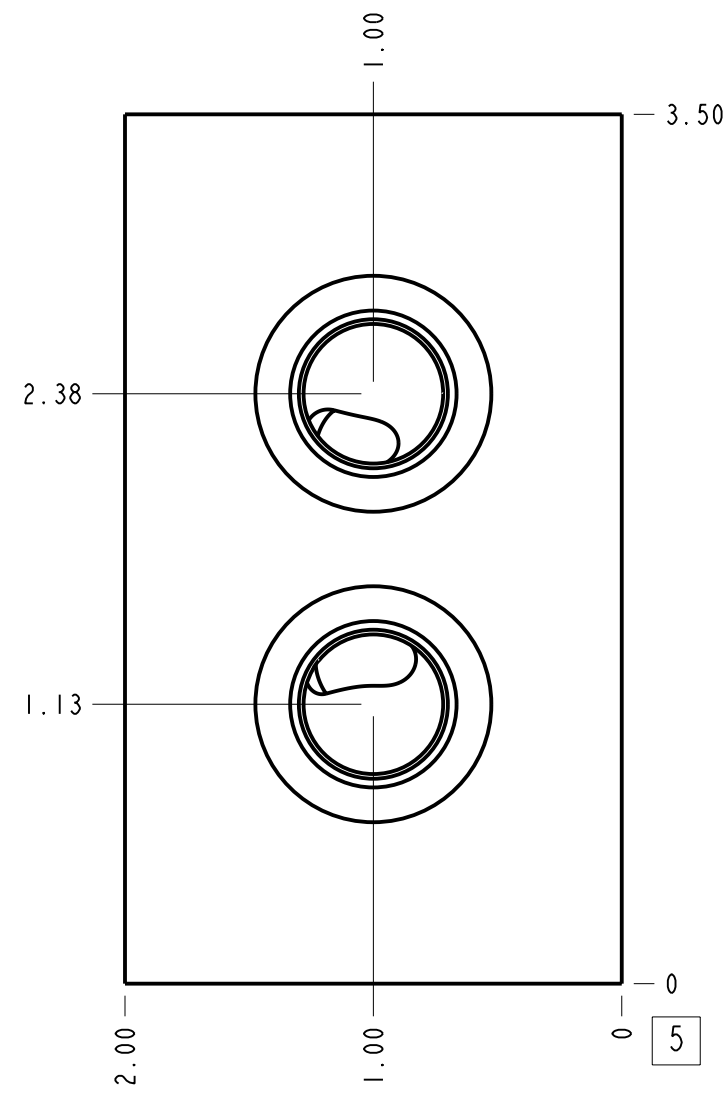
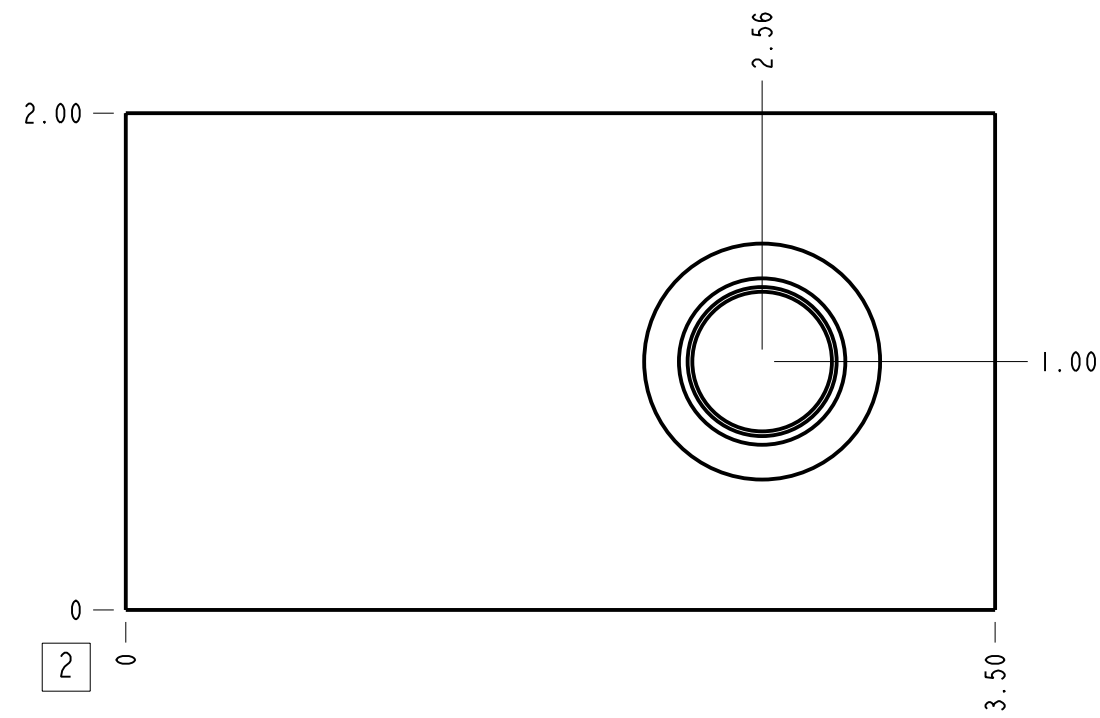
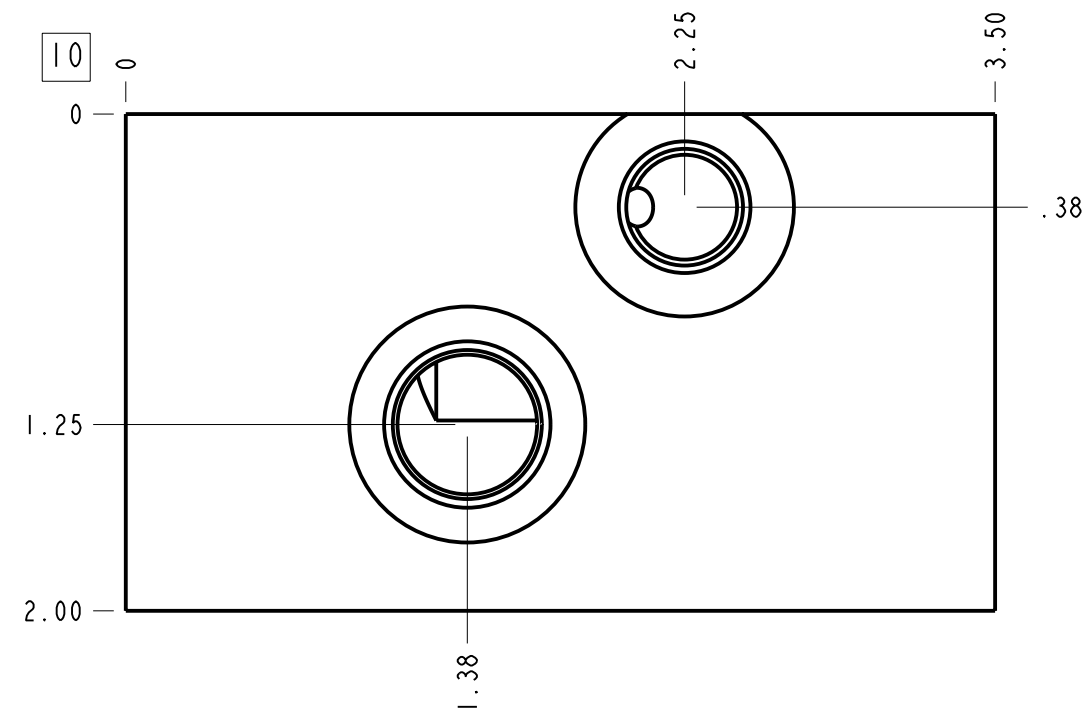


Technical Data	U.S. Units	Metric Units
Cavity	T-10A	
Body Features	P to T, side ports	
Body Type	Subplate	
Interface	ISO 03	
Open Cavity Quantity	1	
Weight	2.080 lb.	0,944 kg.
Mounting Hole Diameter	.28 in.	7,1 mm
Mounting Hole Thread	M5x.08 - 6H	
Mounting Hole Depth	.38 in.	9,7 mm
Mounting Hole Quantity	4	



Notes

- Important: Carefully consider the maximum system pressure. The pressure rating of the manifold is dependent on the manifold material, with the port type/size a secondary consideration. Manifolds constructed of aluminum are not rated for pressures higher than 3000 psi (210 bar), regardless of the port type/size specified.
- This drawing is for reference only. It is generated by an automated process and does not fall under Sun's document control process.



Port Headings		
Product	Port	Size
FSU	Ports A, B, P, T	3/8" BSPP
FSU	Gage Port	1/4" BSPP

I	150-311-003	6061-T6 ALUMINUM	BODY	I
I	PART NO.	SETTING	MATERIAL	PART NAME
T	FSU		ALL DIMENSIONS IN INCH	FIRST ANGLE
E			VIEWS ARE THIRD ANGLE	THIRD ANGLE
M	DESCRIPTION		DATE	SCALE
T-10A Subplate ISO 03		Oct-04-23	1.294	DWG SIZE
P to T, side ports			C	SHEET
			I	

