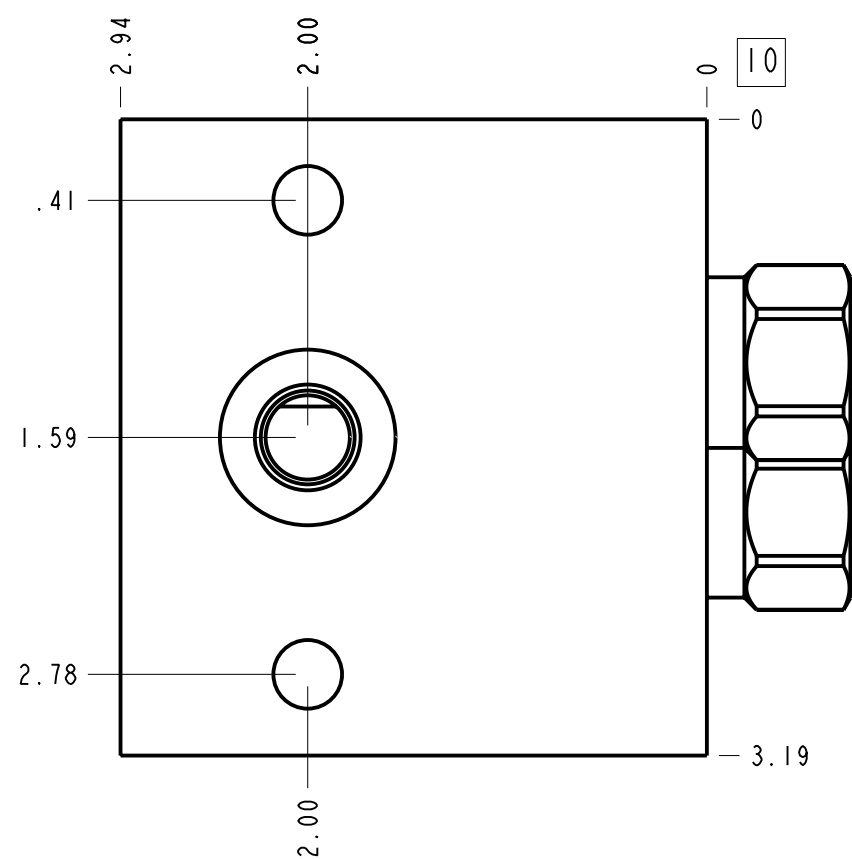
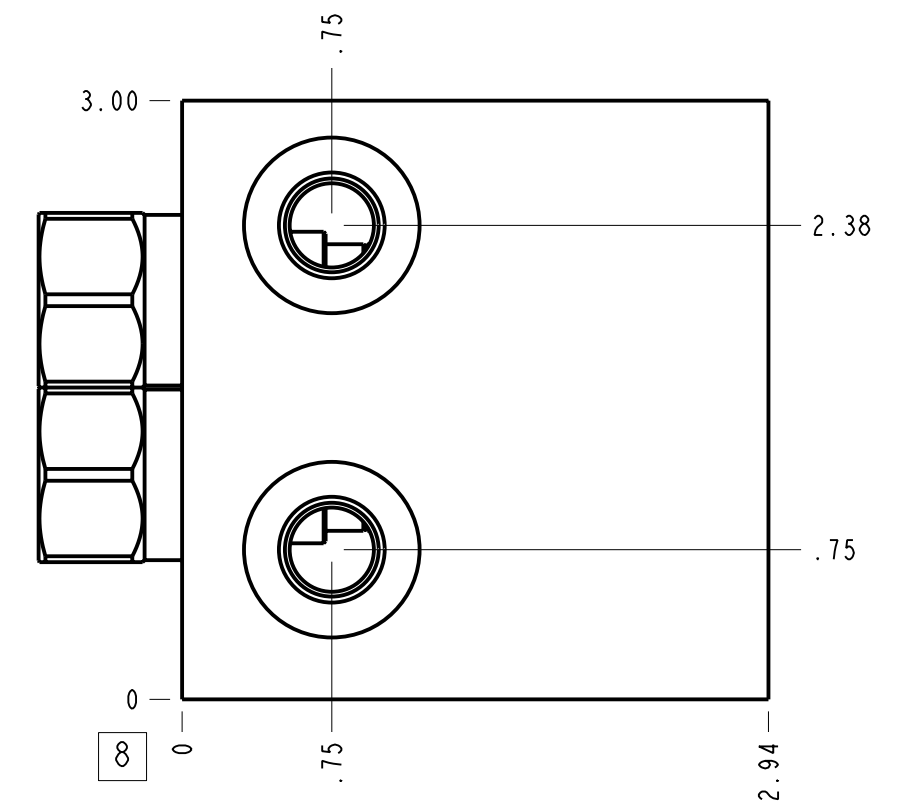
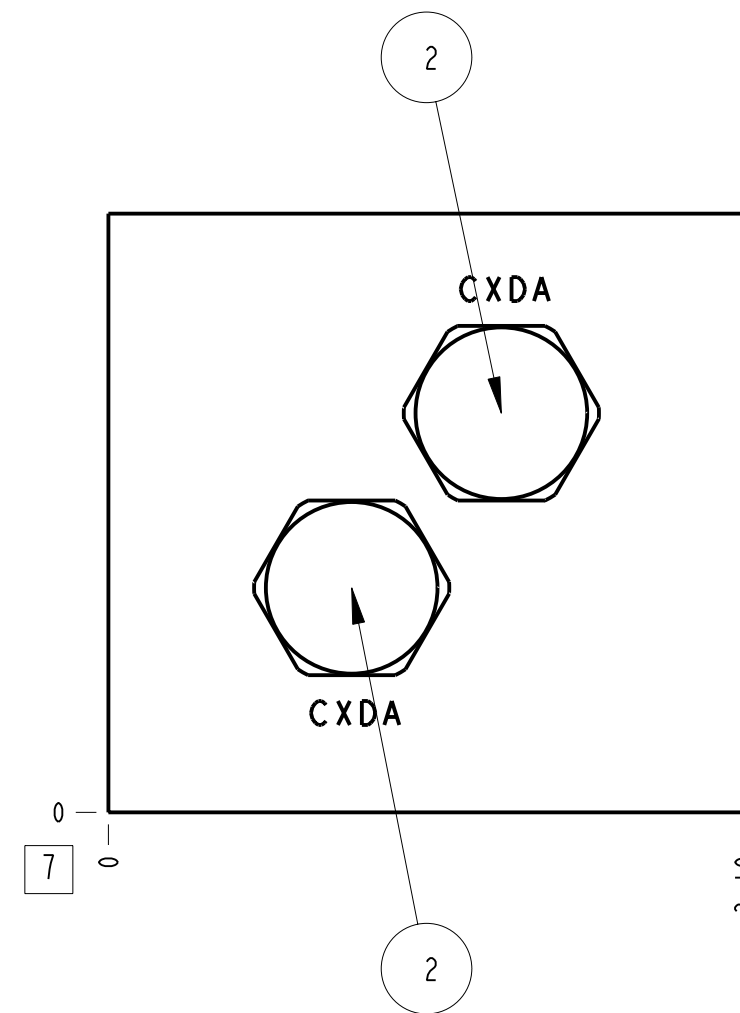
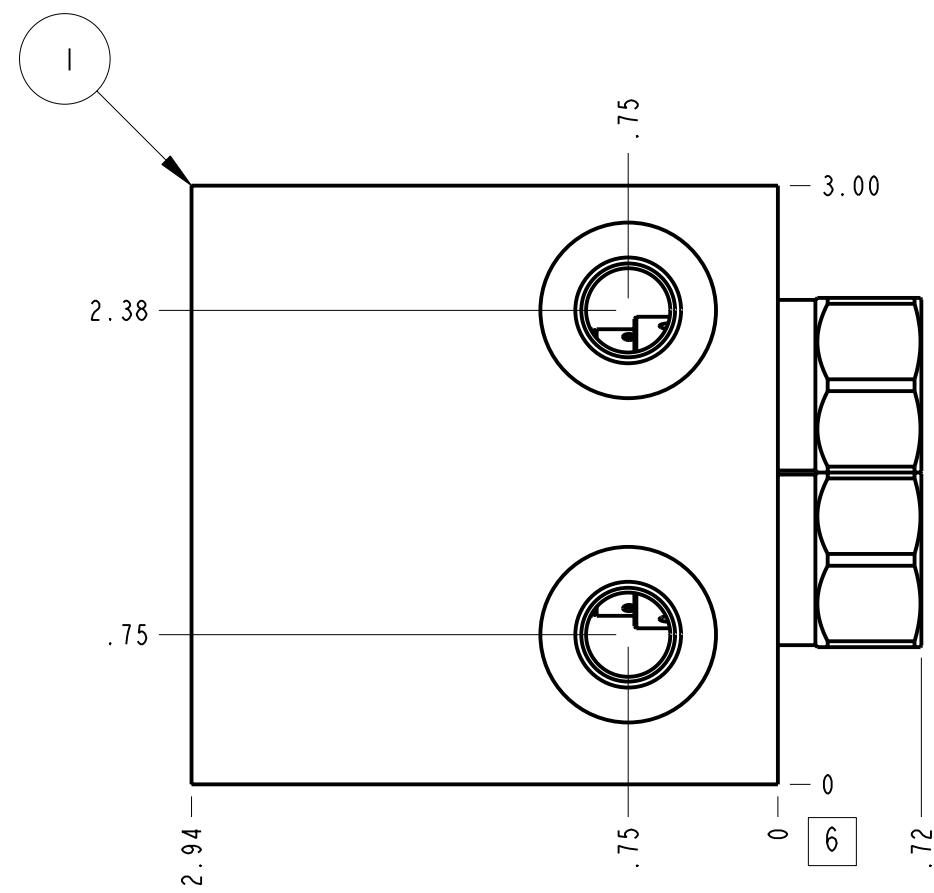
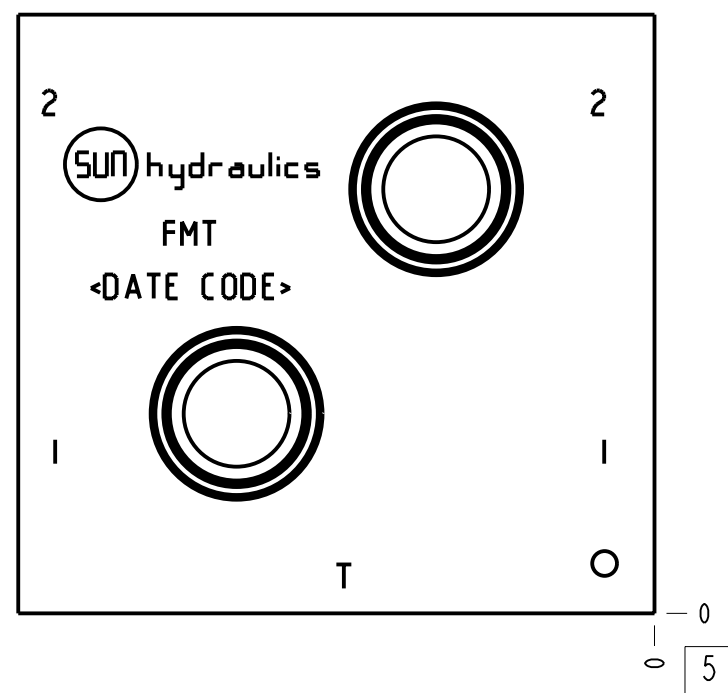


Technical Data	U.S. Units	Metric Units
Cavity	T-10A	
Body Features	Cross port with make up checks	
Body Type	Line mount	
Interface	None	
Open Cavity Quantity	2	
Weight	2.714 lb.	1,231 kg.
Mounting Hole Diameter	.34 in.	8.6 mm
Mounting Hole Depth	Through	
Mounting Hole Quantity	2	
Includes integral cartridge(s)	Yes (see Included Components)	



Notes

- Important: Carefully consider the maximum system pressure. The pressure rating of the manifold is dependent on the manifold material, with the port type/size a secondary consideration. Manifolds constructed of aluminum are not rated for pressures higher than 3000 psi (210 bar), regardless of the port type/size specified.
- This drawing is for reference only. It is generated by an automated process and does not fall under Sun's document control process.

Port Headings		
Product	Port	Size
FMT	All Ports	1/4" BSPP

2	CXDAXAN		CHECK VALVE	2						
1	151-170-007		6061-T6 ALUMINUM	BODY	1					
ITEM	PART NO.	SETTING	MATERIAL	PART NAME	QTY					
	MODEL		FMT	ALL DIMENSIONS IN INCH VIEWS ARE THIRD ANGLE						
DESCRIPTION		T-10A Line mount Cross port with make up checks	DATE	Aug-07-24	SCALE	1.039	DWG SIZE	C	SHEET	1

