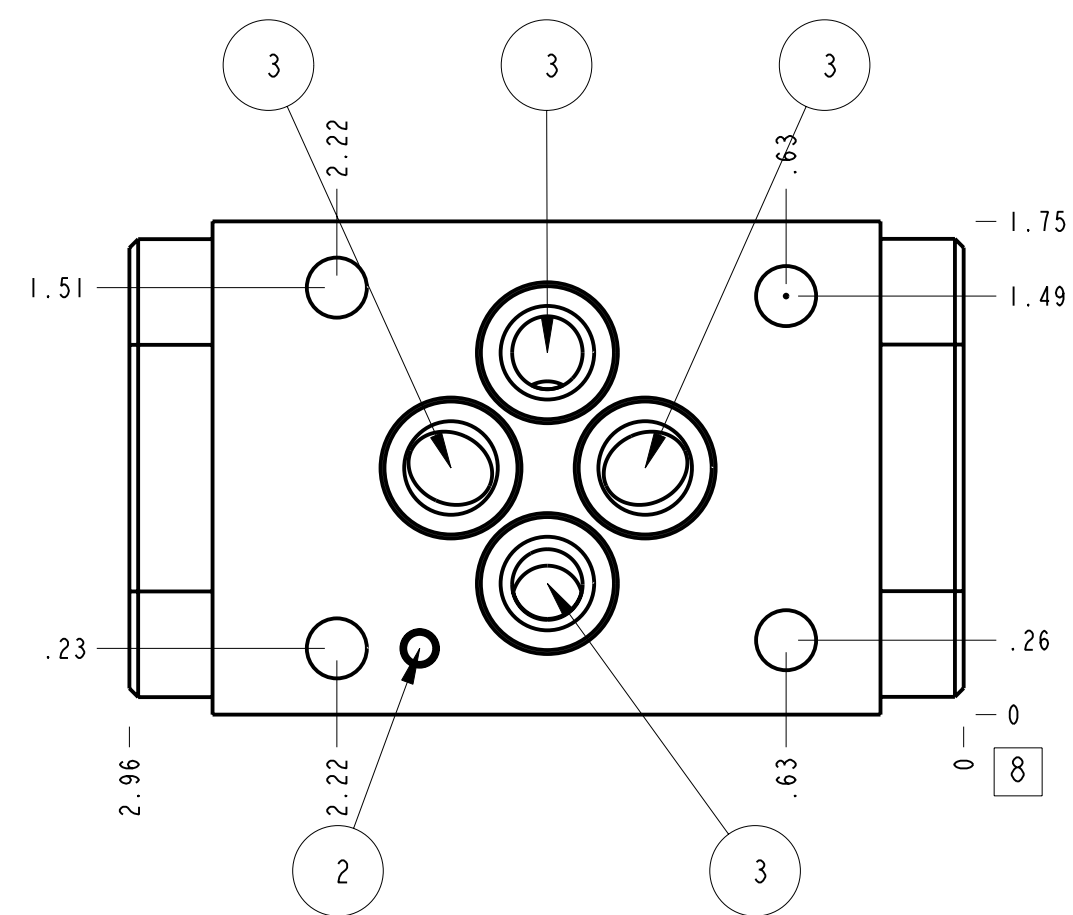
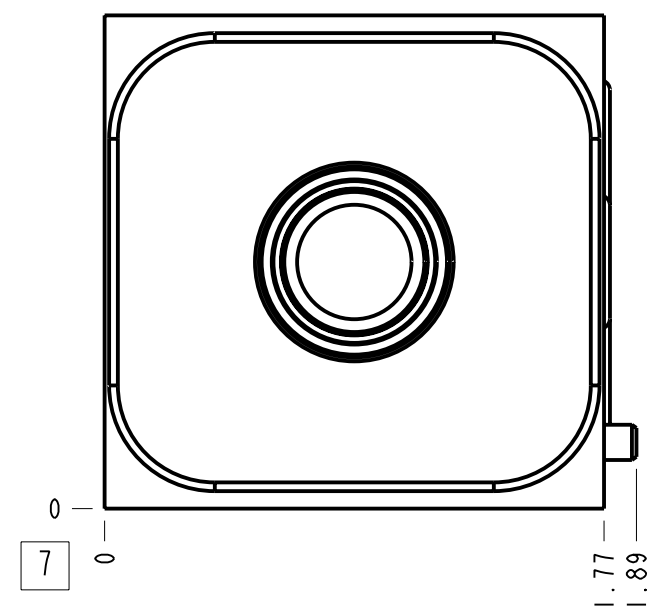
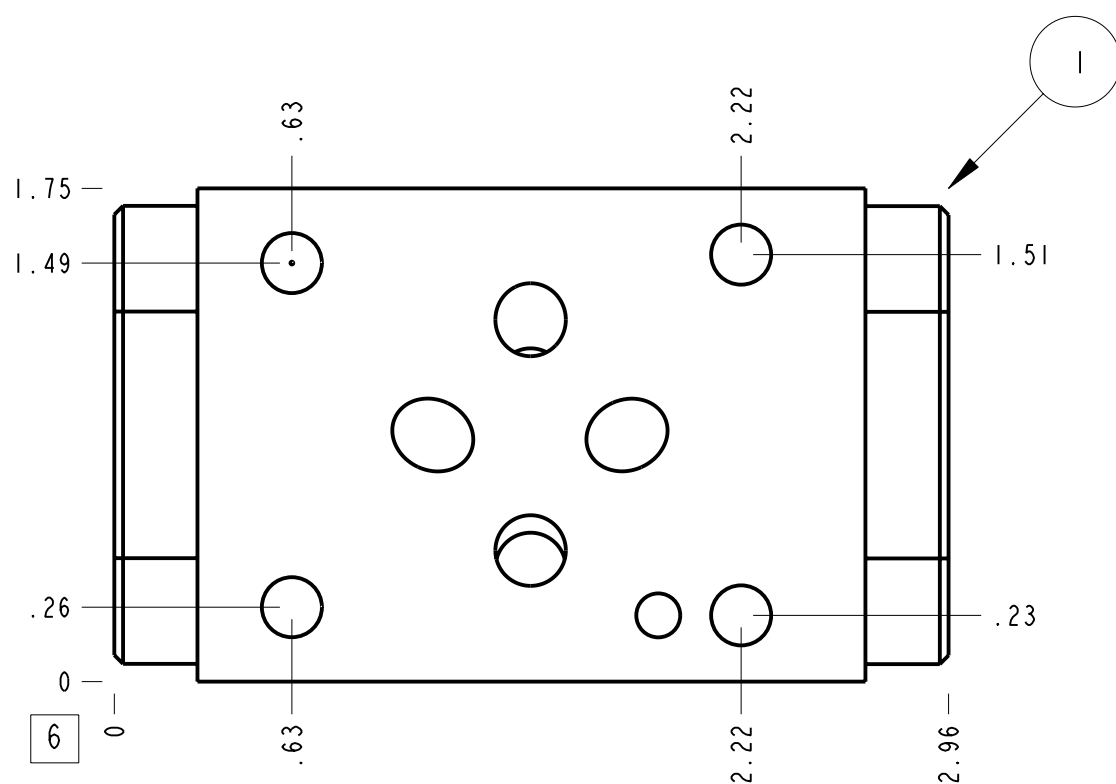
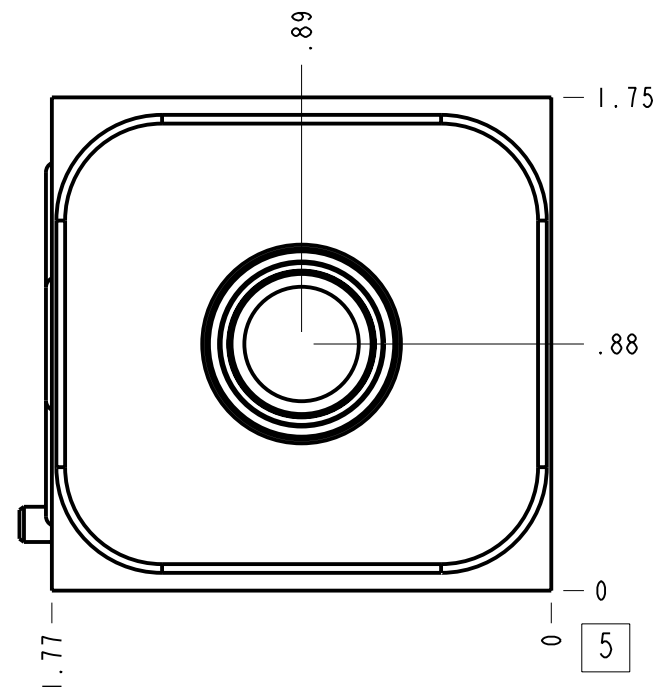
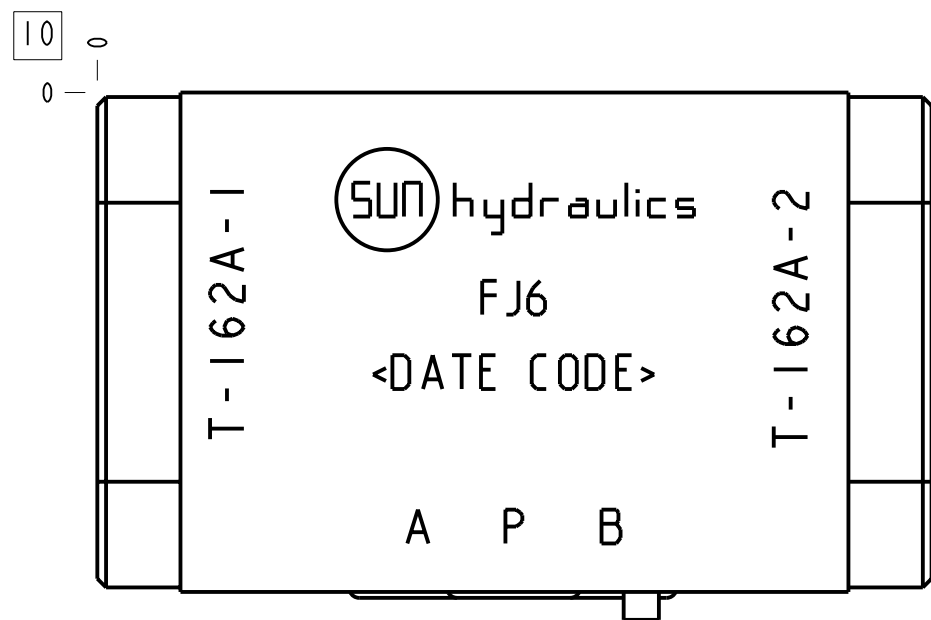


Technical Data	U.S. Units	Metric Units
Cavity		T-162A
Body Features		A and B to T
Body Type		Sandwich
Interface		ISO 03
Open Cavity Quantity		2
Stack Height	1.77 in.	45 mm
Weight	0.748 lb.	0,339 kg.
Maximum Operating Pressure - 6061-T651 Aluminum	3000 psi	210 bar
Maximum Operating Pressure - 65-45-12 Ductile Iron	5000 psi	350 bar
Seal Plate Included (see notes)		No



Notes

1. Important: Carefully consider the maximum system pressure. The pressure rating of the manifold is dependent on the manifold material, with the port type/size a secondary consideration. Manifolds constructed of aluminum are not rated for pressures higher than 3000 psi (210 bar), regardless of the port type/size specified.
2. Seal retainer plate is not required for this model.
3. This drawing is for reference only. It is generated by an automated process and does not fall under Sun's document control process.



3	500-001-012		N-0674-70	O-RING	4
2	811-001-006		LOW CARBON STEEL	PIN	1
1	17F-672		6061-T6 ALUMINUM	BODY	1
ITEM	PART NO.	SETTING	MATERIAL	PART NAME	QTY

MODEL	FJ6	ALL DIMENSIONS IN INCH VIEWS ARE THIRD ANGLE		FIRST ANGLE	THIRD ANGLE
DESCRIPTION	T-162A Sandwich ISO 03 A and B to T	DATE	SCALE	DWG SIZE	SHEET
		Aug-29-24	1.468	C	1