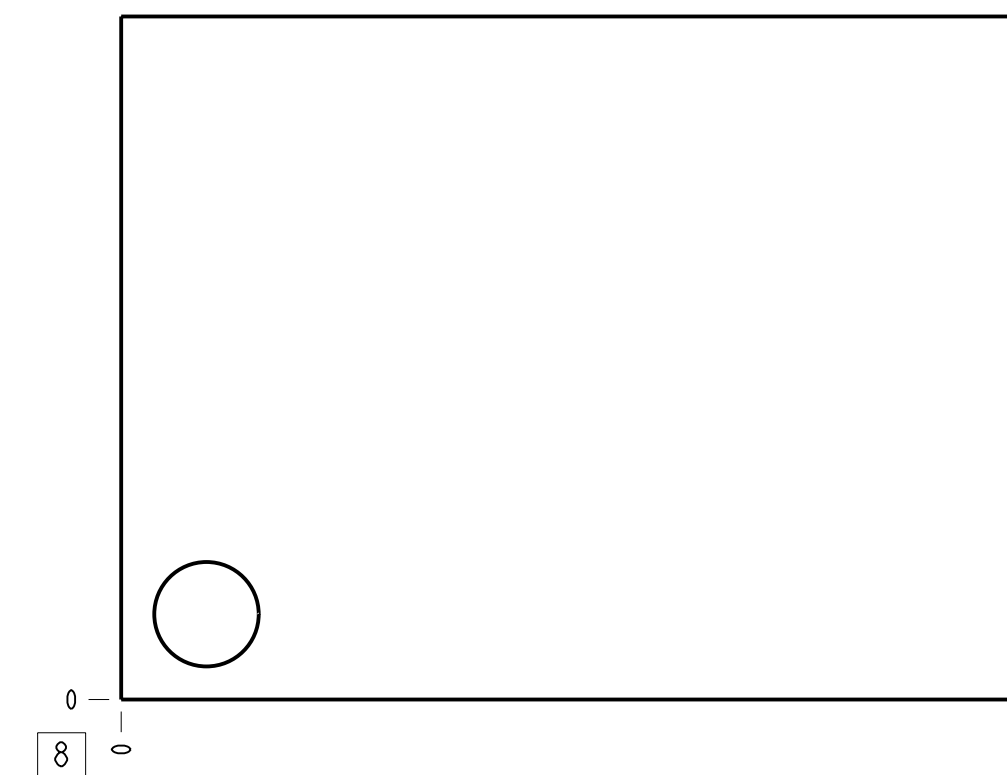
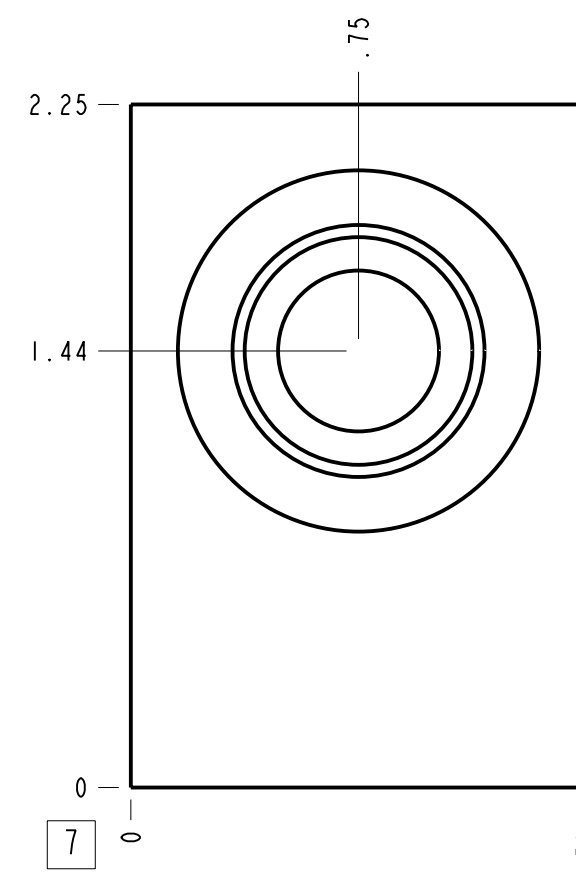
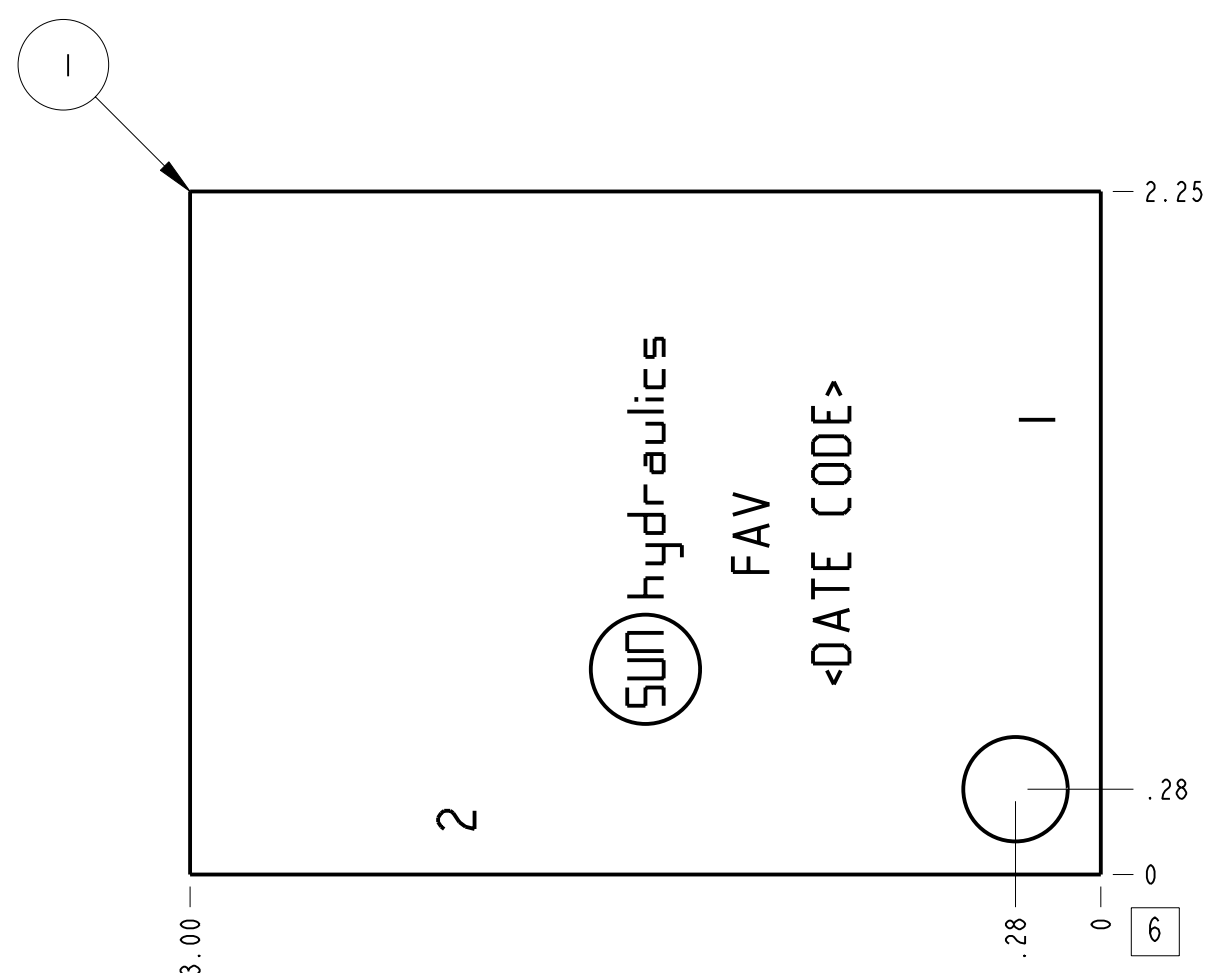
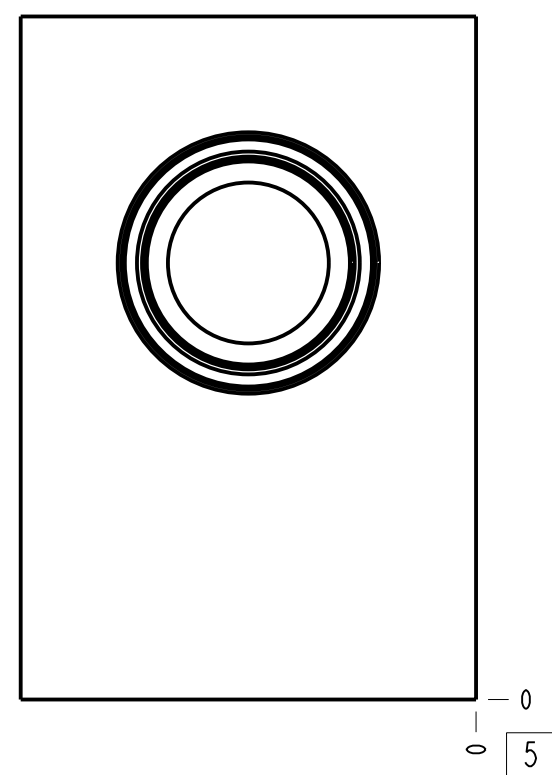
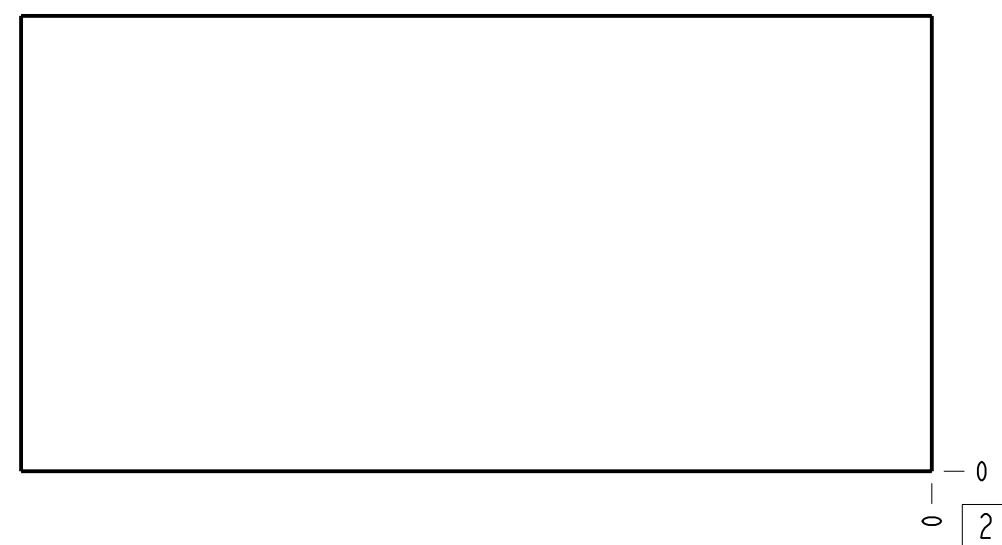
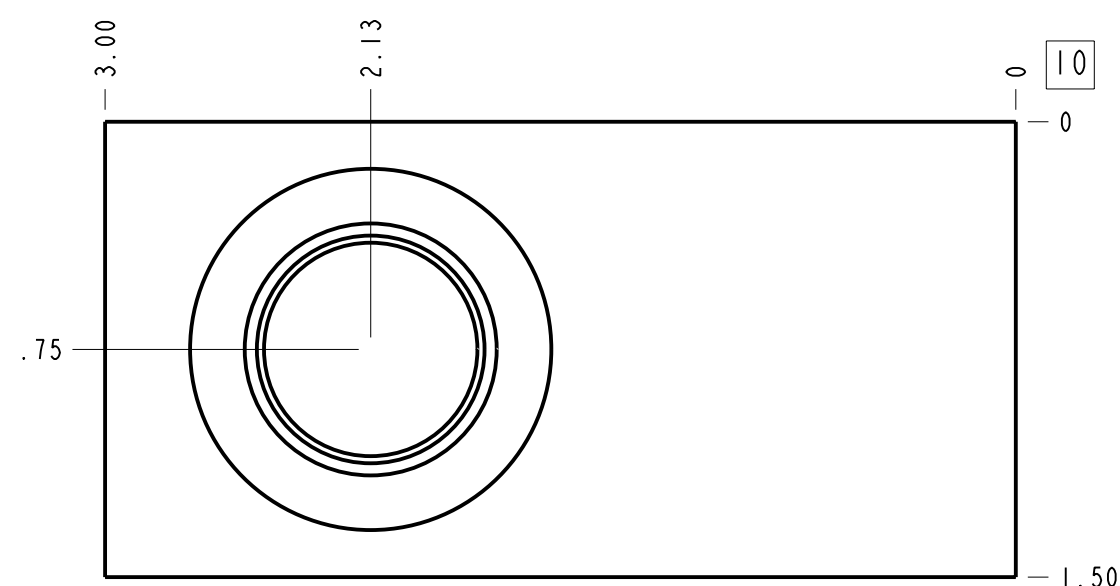


| Technical Data         | U.S. Units | Metric Units  |
|------------------------|------------|---------------|
| Cavity                 |            | T-10A         |
| Body Features          |            | Ninety degree |
| Body Type              |            | Line mount    |
| Interface              |            | None          |
| Open Cavity Quantity   |            | 1             |
| Weight                 | 0.809 lb.  | 0,367 kg.     |
| Mounting Hole Diameter | .34 in.    | 8.6 mm        |
| Mounting Hole Depth    |            | Through       |
| Mounting Hole Quantity |            | 1             |



**Notes**

- Important: Carefully consider the maximum system pressure. The pressure rating of the manifold is dependent on the manifold material, with the port type/size a secondary consideration. Manifolds constructed of aluminum are not rated for pressures higher than 3000 psi (210 bar), regardless of the port type/size specified.
- This drawing is for reference only. It is generated by an automated process and does not fall under Sun's document control process.



| Port Headings |           |           |
|---------------|-----------|-----------|
| Product       | Port      | Size      |
| FAV           | All Ports | 1/2" BSPP |

|             |                                   |                   |   |               |                            |
|-------------|-----------------------------------|-------------------|---|---------------|----------------------------|
| ITEM        | 151-779-005                       |                   | 6061-T6 ALUMINUM                                | BODY          | 1                          |
|             | PART NO.                          | SETTING           | MATERIAL  | PART NAME     | QTY                        |
| MODEL       | FAV                               |                   | ALL DIMENSIONS IN INCH<br>VIEWS ARE THIRD ANGLE |               | FIRST ANGLE<br>THIRD ANGLE |
| DESCRIPTION | T-10A Line mount<br>Ninety degree | DATE<br>Apr-24-24 | SCALE<br>1.581                                  | DWG SIZE<br>C | SHEET<br>1                 |

