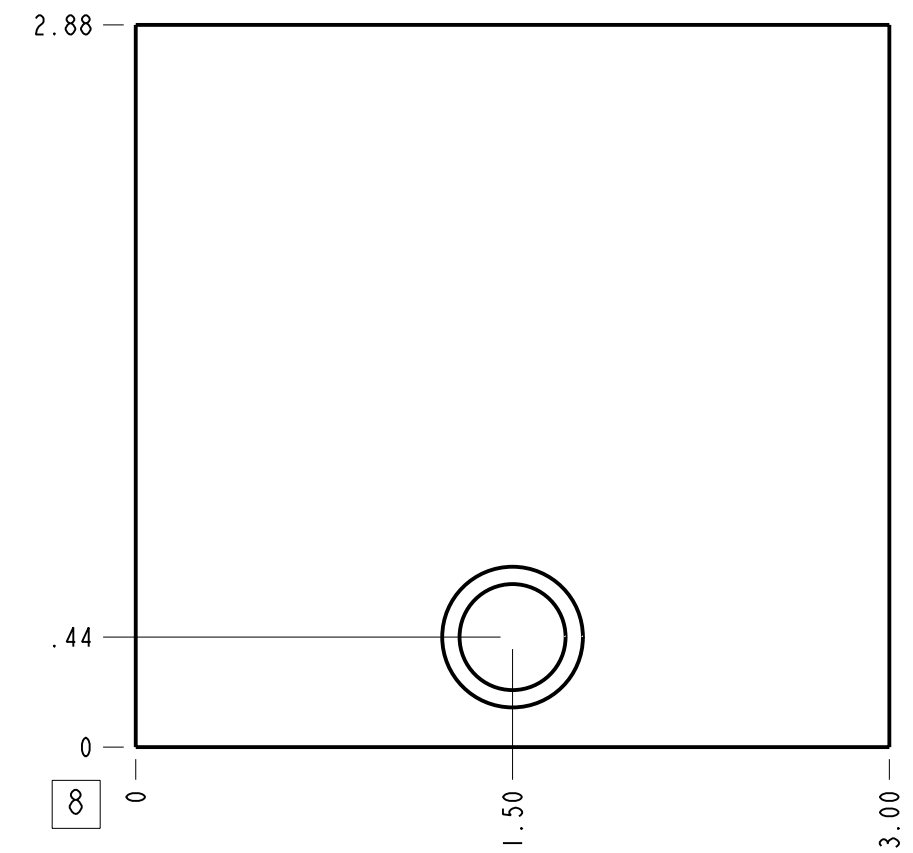
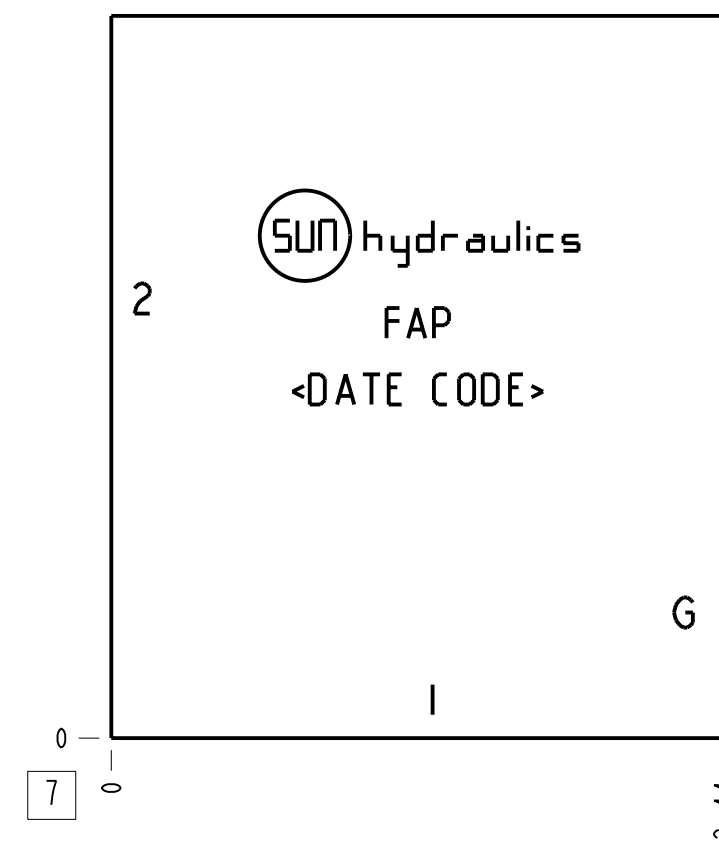
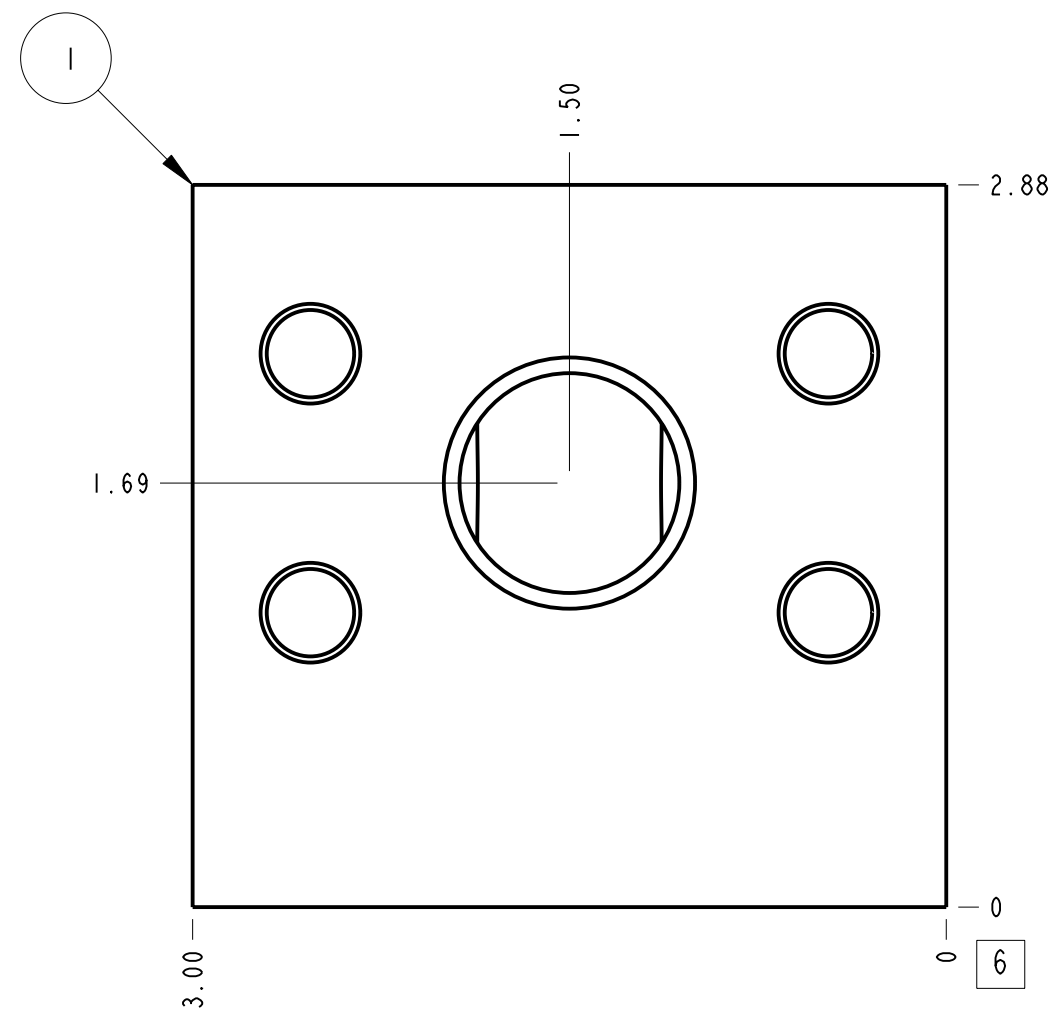
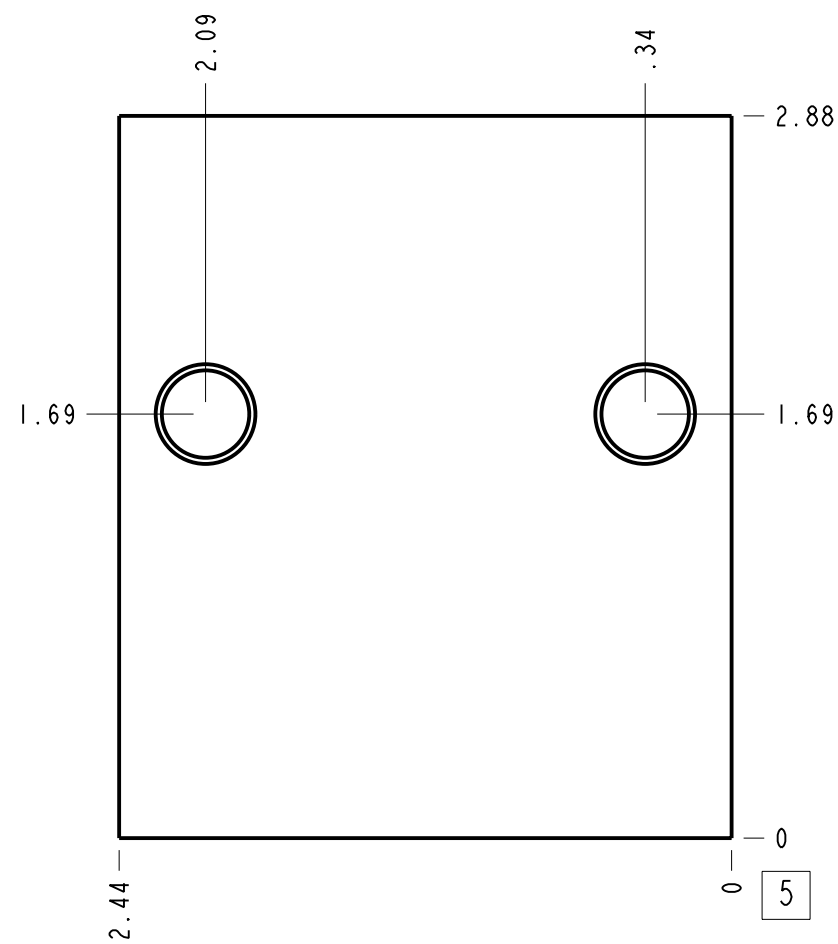
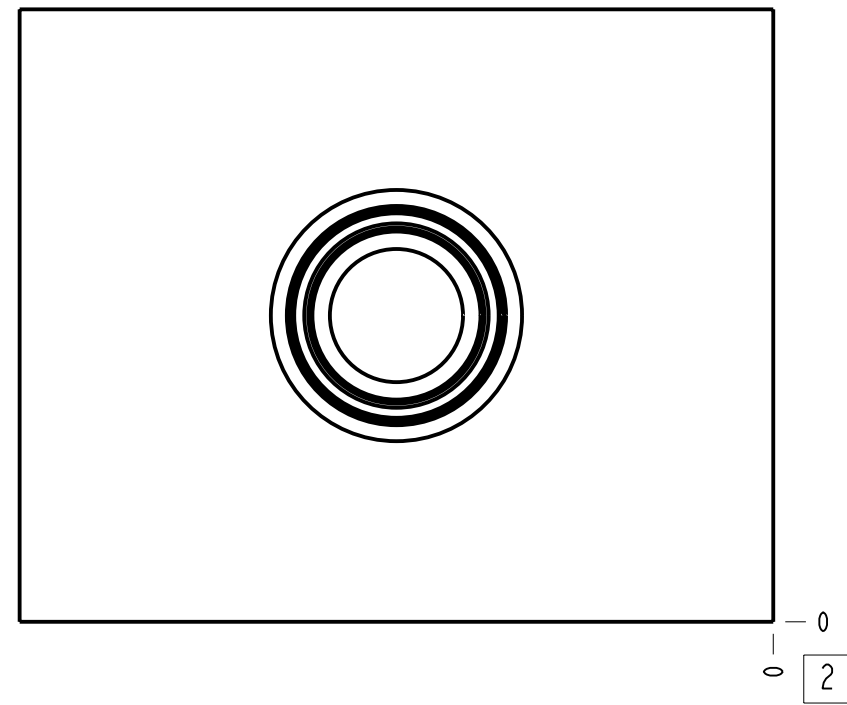
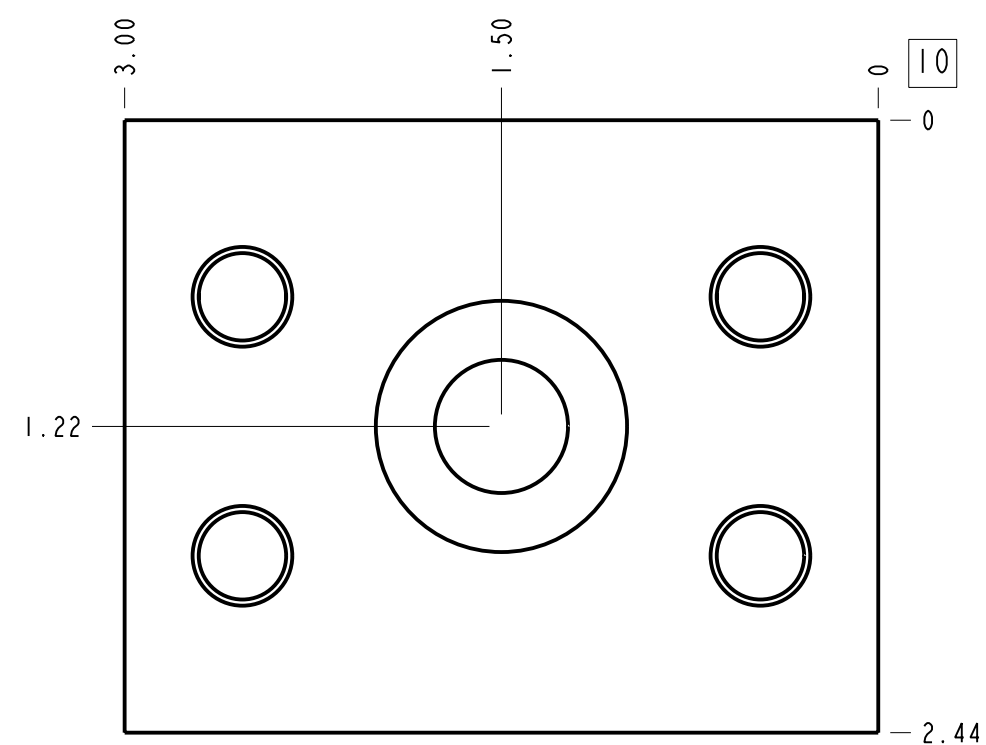


Technical Data	U.S. Units	Metric Units
Cavity	T-10A	
Body Features	Ninety degree	
Body Type	Line mount	
Interface	None	
Open Cavity Quantity	1	
Weight	1.727 lb.	0,783 kg.
Mounting Hole Thread	.375-16 UNC - 2B in.	
Mounting Hole Depth	.62 in.	15,7 mm
Mounting Hole Quantity	2	



Notes

- Important: Carefully consider the maximum system pressure. The pressure rating of the manifold is dependent on the manifold material, with the port type/size a secondary consideration. Manifolds constructed of aluminum are not rated for pressures higher than 3000 psi (210 bar), regardless of the port type/size specified.
- Flange mounting hole data: Inch: 3/8-16 UNC x .88 (22,3 mm) DP, Metric: M10 x 1.5-6H x .88 (22,3 mm) DP
- This drawing is for reference only. It is generated by an automated process and does not fall under Sun's document control process.



Port Headings		
Product	Port	Size
FAP	Ports 1 & 2	1" Code 61
FAP	Gage Port	1/4" NPTF

I	152-279-001		6061-T6 ALUMINUM	BODY	I
I T E M	PART NO.	SETTING	MATERIAL	PART NAME	Q T Y
MODEL			FAP	ALL DIMENSIONS IN INCH VIEWS ARE THIRD ANGLE	FIRST ANGLE THIRD ANGLE
DESCRIPTION			T-10A Line mount Ninety degree	DATE Nov-14-24	SCALE 1.308
			DWG SIZE C	SHEET 1	SUN hydraulics