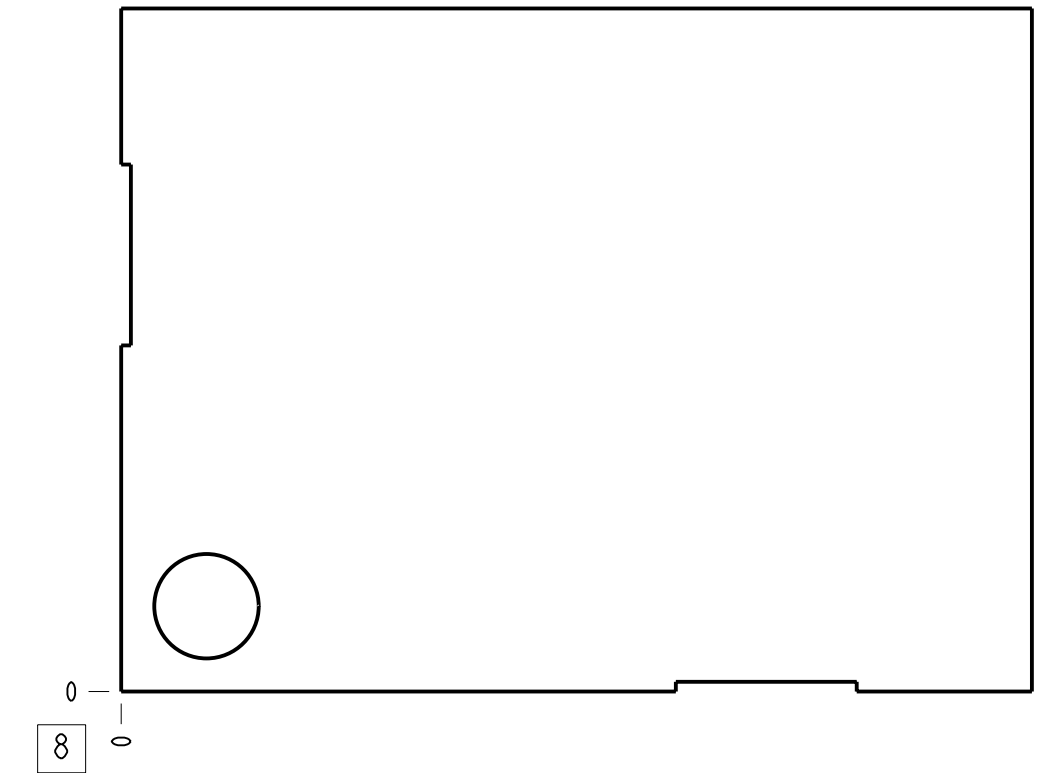
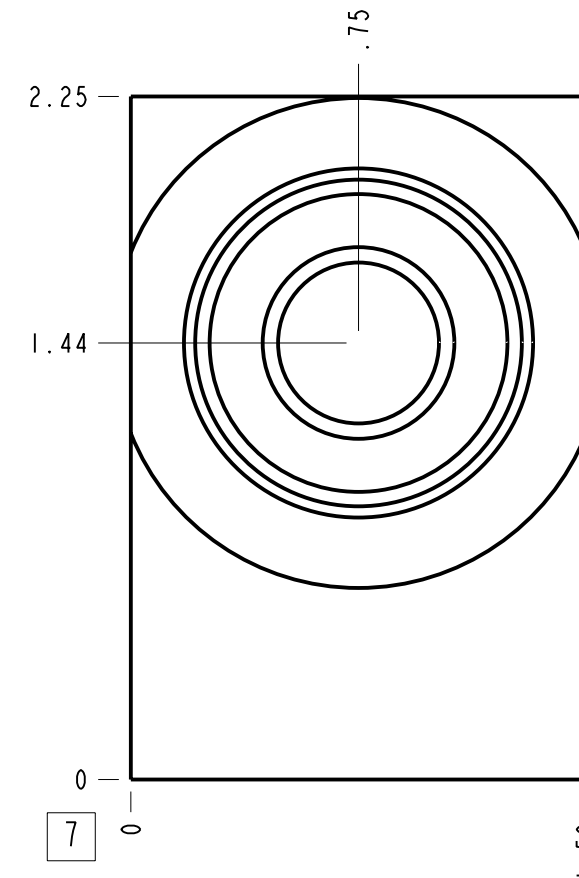
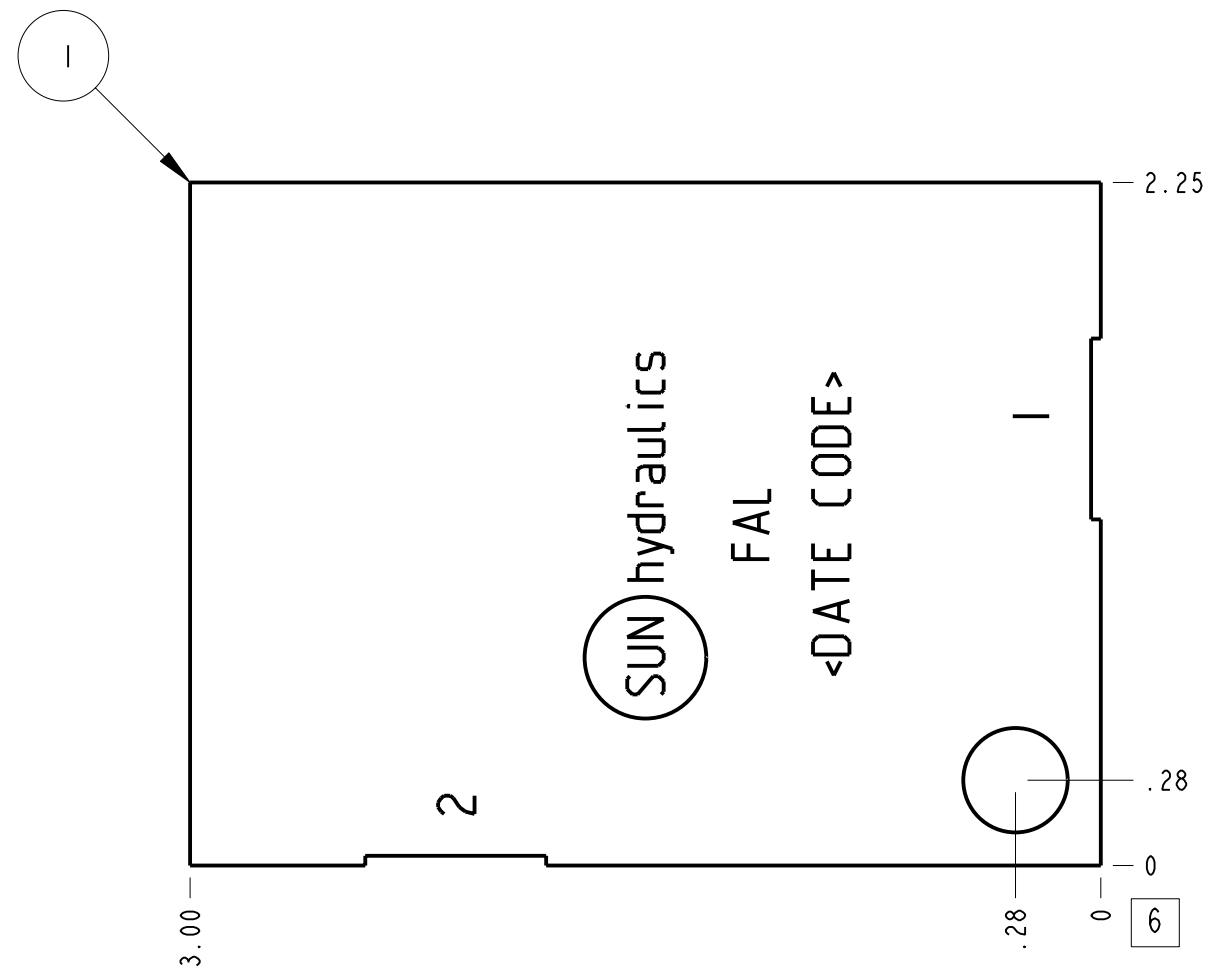
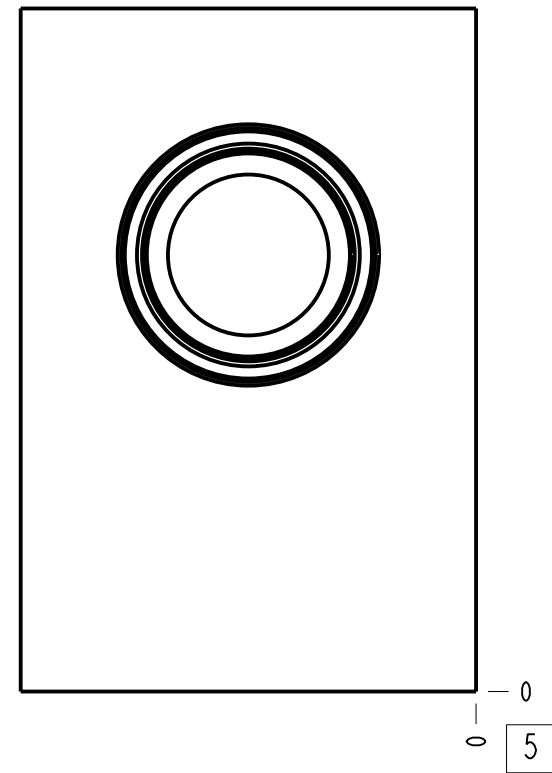
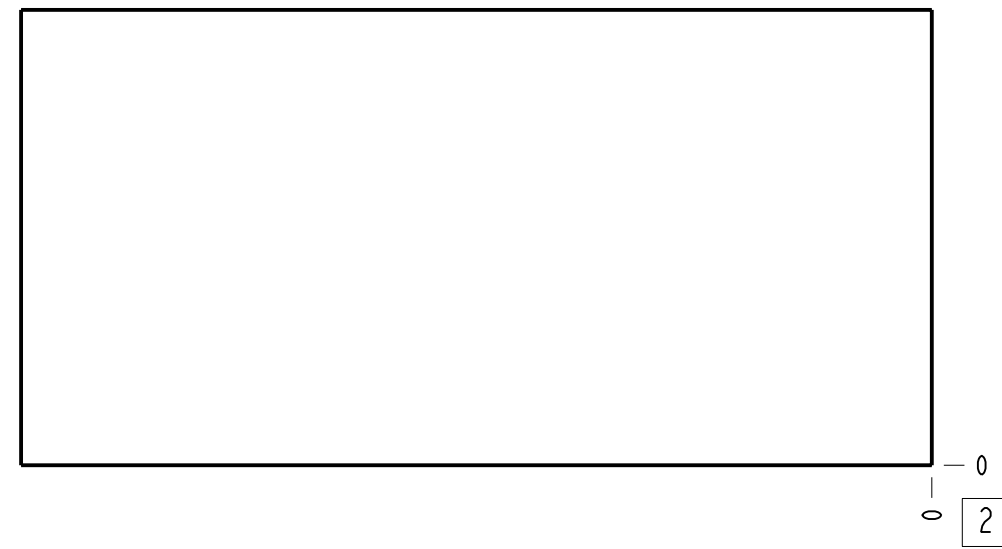
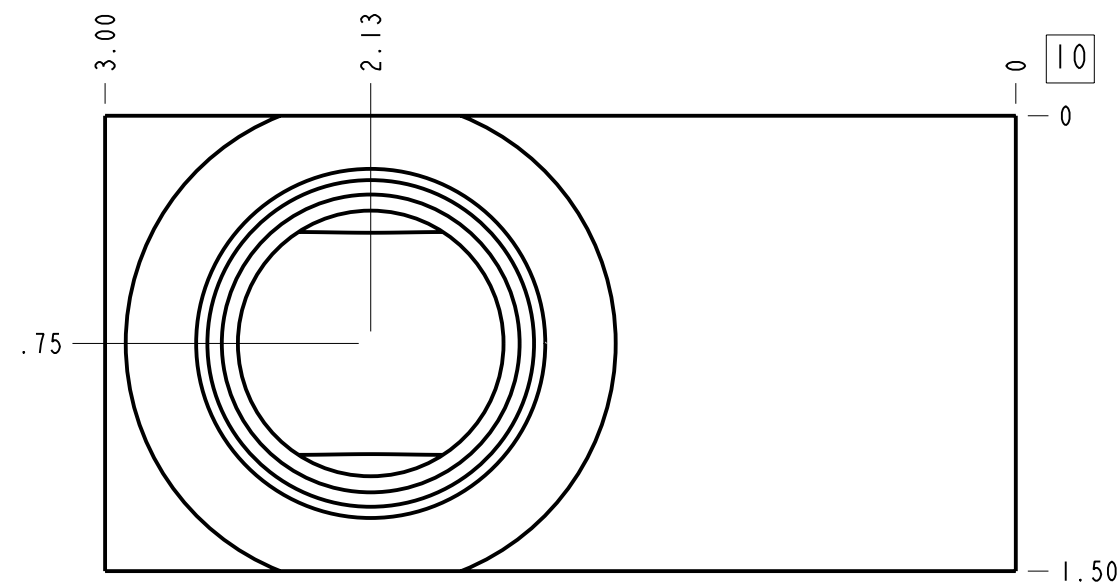


Technical Data	U.S. Units	Metric Units
Cavity		T-10A
Body Features		Ninety degree
Body Type		Line mount
Interface		None
Open Cavity Quantity		1
Weight	0.734 lb.	0.333 kg.
Mounting Hole Diameter	.34 in.	8.6 mm
Mounting Hole Depth		Through
Mounting Hole Quantity		1



**Notes**

1. Important: Carefully consider the maximum system pressure. The pressure rating of the manifold is dependent on the manifold material, with the port type/size a secondary consideration. Manifolds constructed of aluminum are not rated for pressures higher than 3000 psi (210 bar), regardless of the port type/size specified.



Port Headings		
Product	Port	Size
FAL	All Ports	SAE 12

ITEM	151-779-004		6061-T6 ALUMINUM	BODY	1
MODEL	FAL				
DESCRIPTION	T-10A Line mount Ninety degree	DATE	SCALE	DWG SIZE	SHEET
		Jul-31-19	1.581	C	1

ALL DIMENSIONS IN INCH  
VIEWS ARE THIRD ANGLE

FIRST ANGLE

THIRD ANGLE