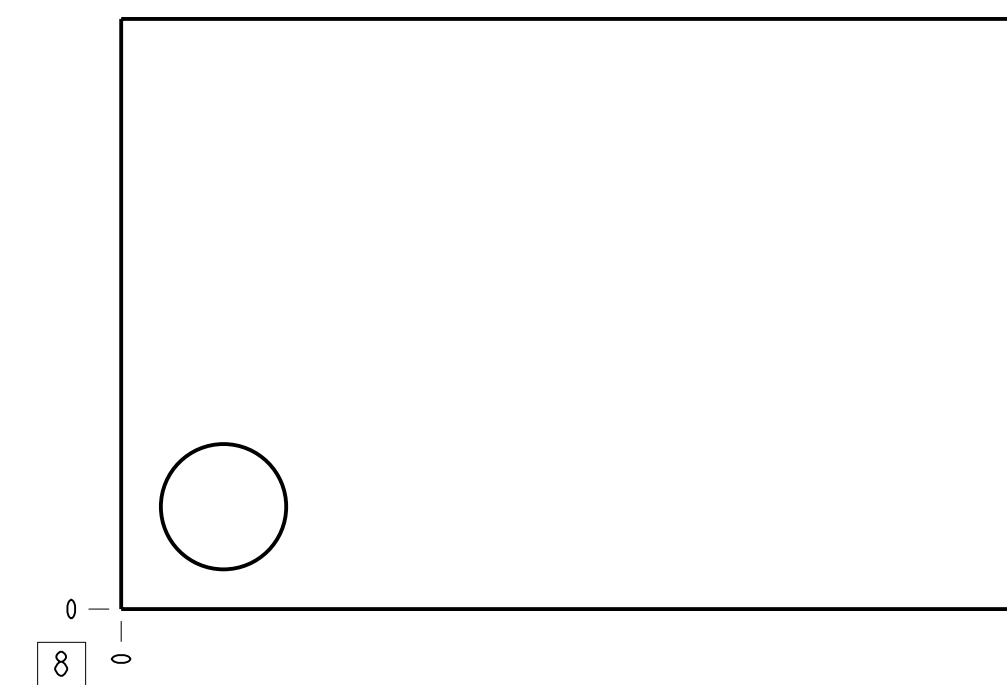
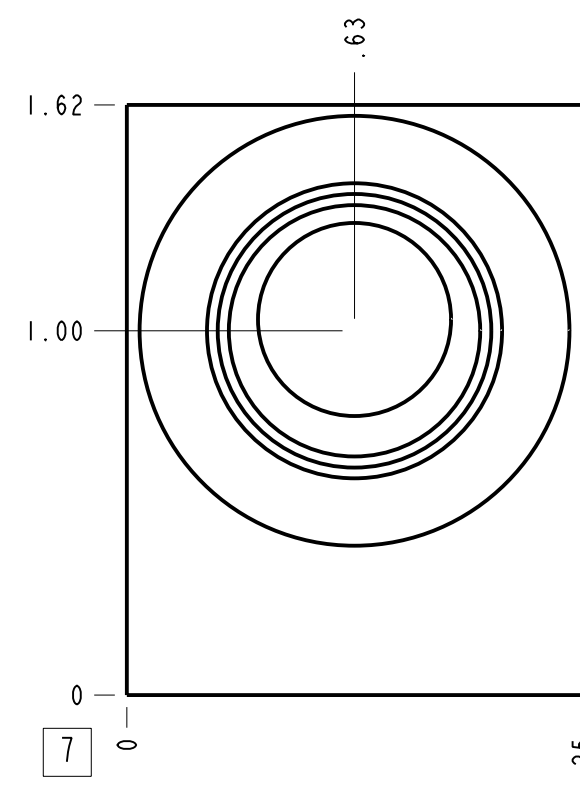
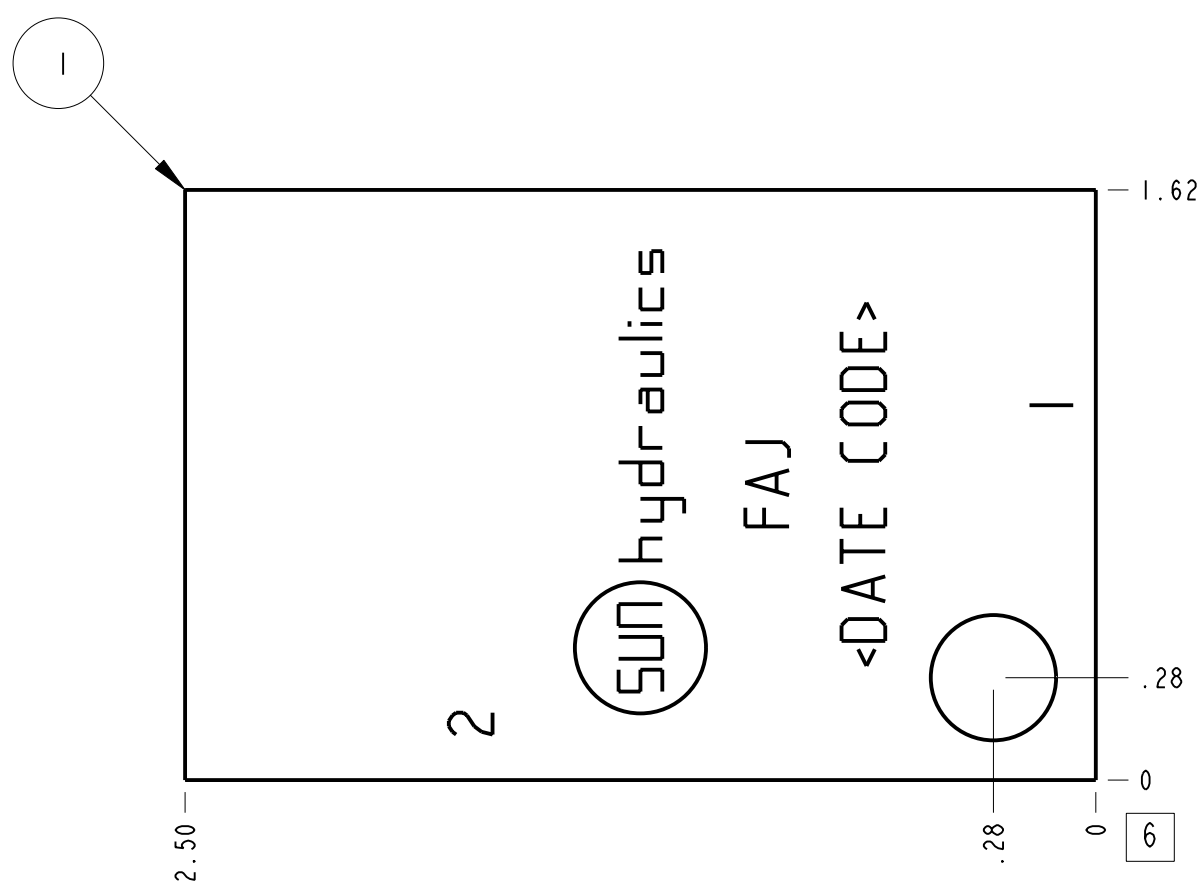
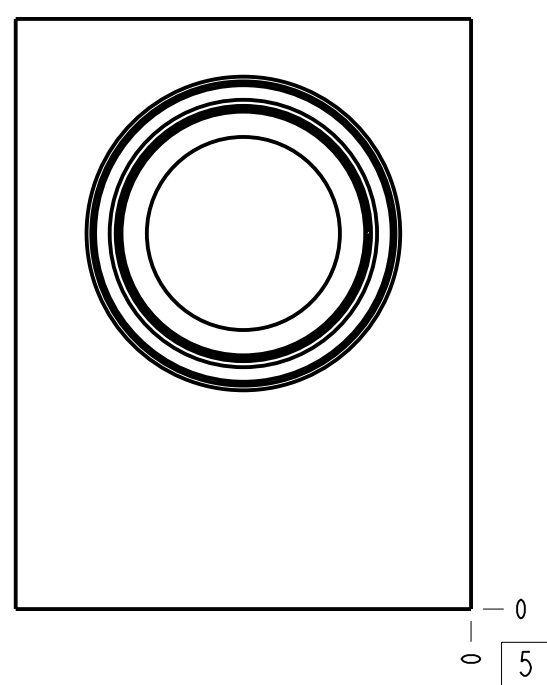
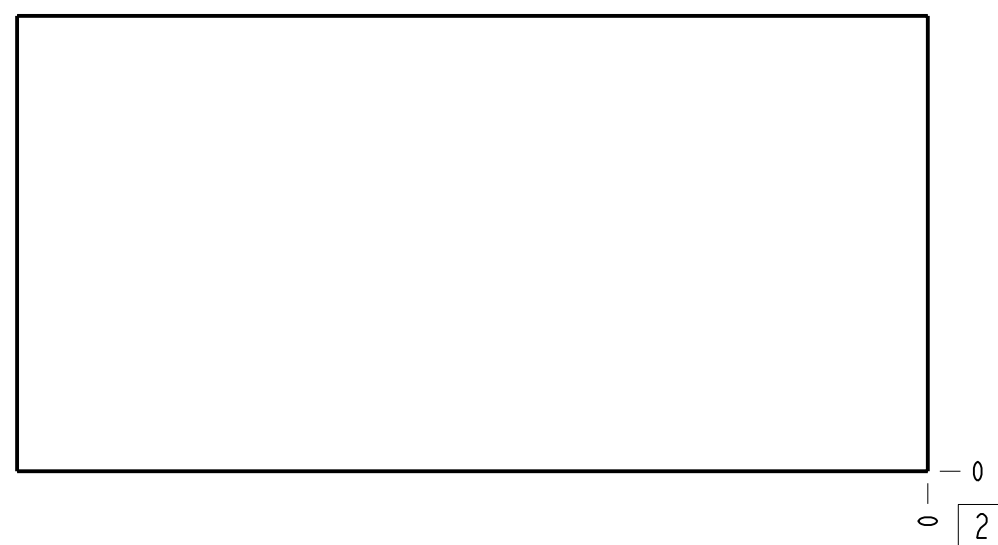
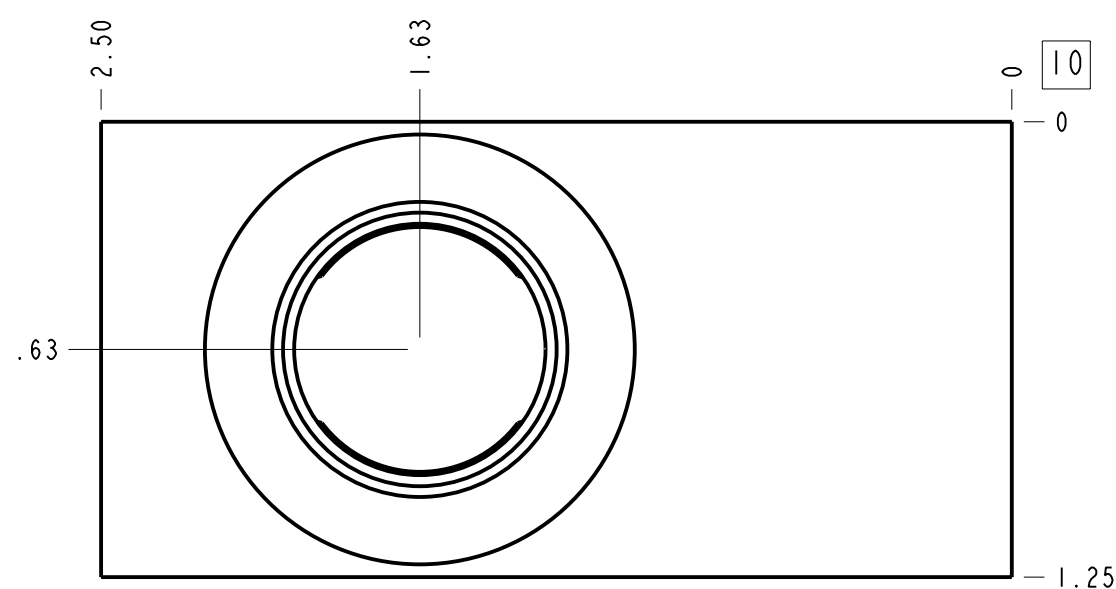


Technical Data	U.S. Units	Metric Units
Cavity		T-10A
Body Features		Ninety degree
Body Type		Line mount
Interface		None
Open Cavity Quantity		1
Weight	0.355 lb.	0,161 kg.
Mounting Hole Diameter	.34 in.	8.6 mm
Mounting Hole Depth		Through
Mounting Hole Quantity		1



Notes

- Important: Carefully consider the maximum system pressure. The pressure rating of the manifold is dependent on the manifold material, with the port type/size a secondary consideration. Manifolds constructed of aluminum are not rated for pressures higher than 3000 psi (210 bar), regardless of the port type/size specified.
- This drawing is for reference only. It is generated by an automated process and does not fall under Sun's document control process.



Port Headings		
Product	Port	Size
FAJ	All Ports	SAE 8

I	150-186-005	6061-T6 ALUMINUM	BODY	I	
I T E M	PART NO.	SETTING	MATERIAL	PART NAME	Q T Y
MODEL	FAJ		ALL DIMENSIONS IN INCH VIEWS ARE THIRD ANGLE		FIRST ANGLE THIRD ANGLE
DESCRIPTION	T-10A Line mount Ninety degree	DATE May-31-23	SCALE 1.897	DWG SIZE C	SHEET 1

