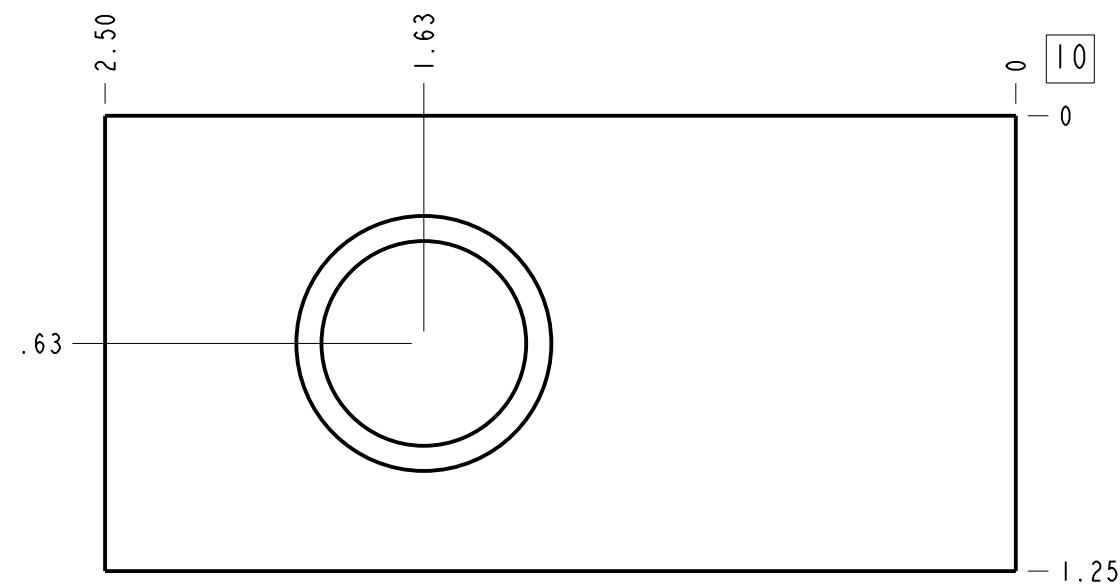
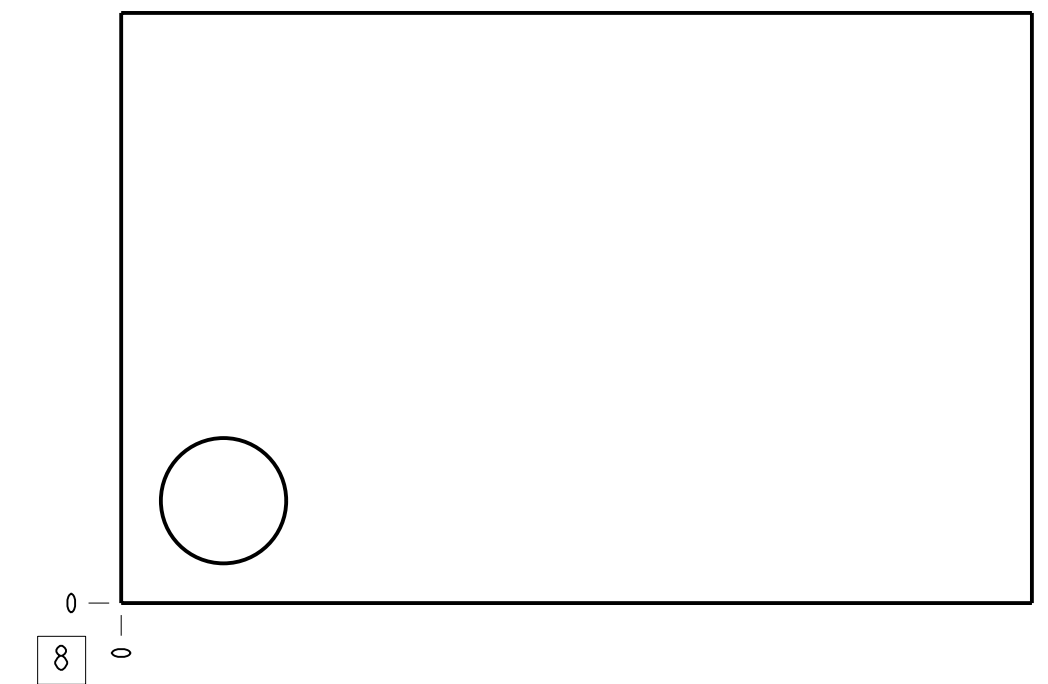
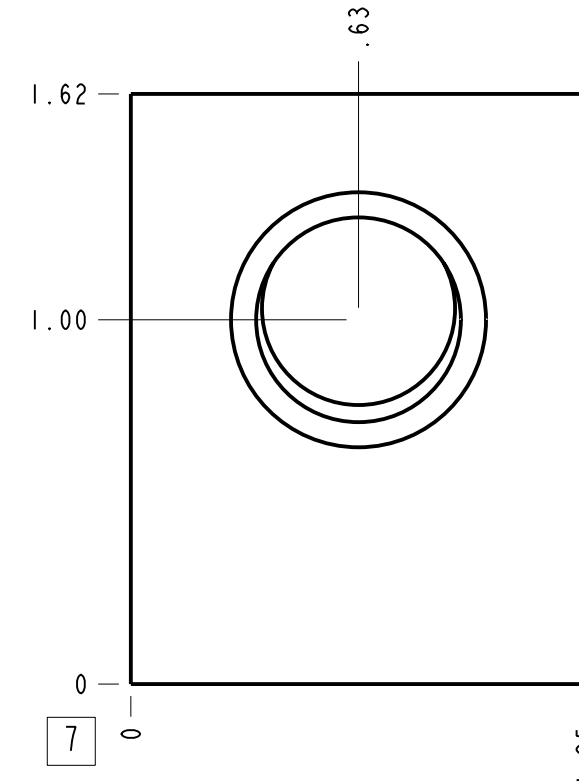
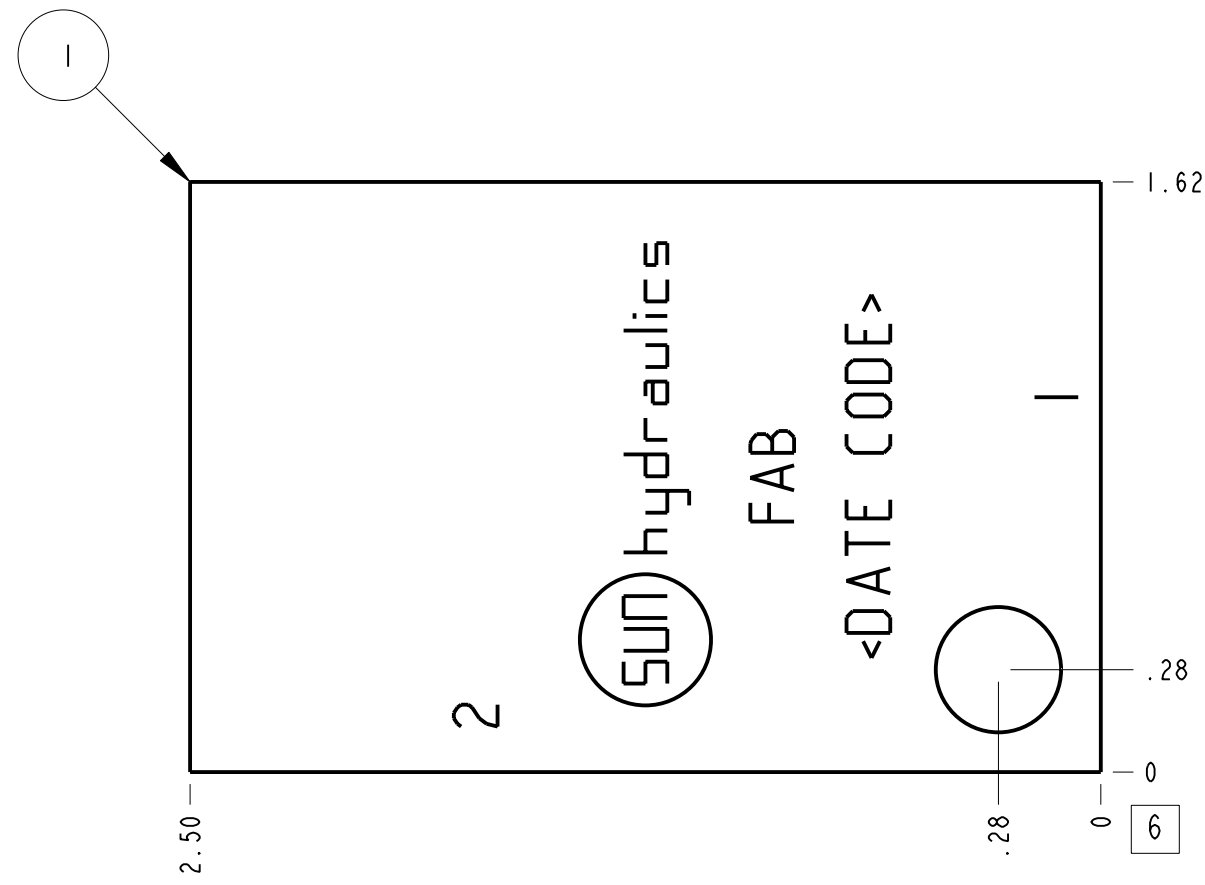
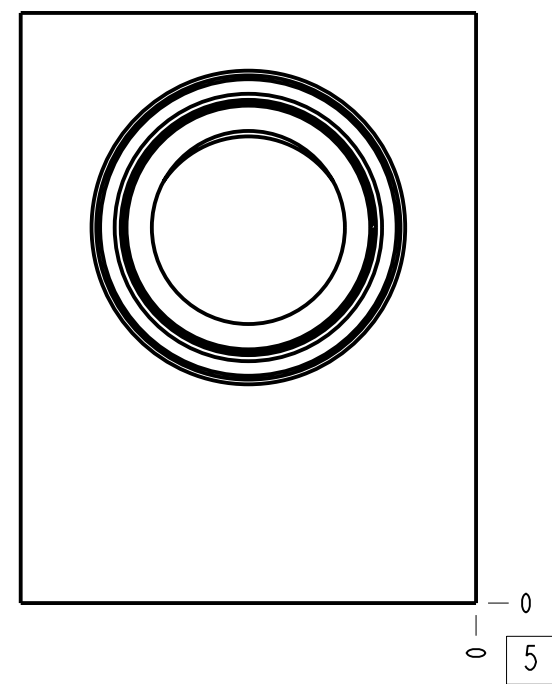
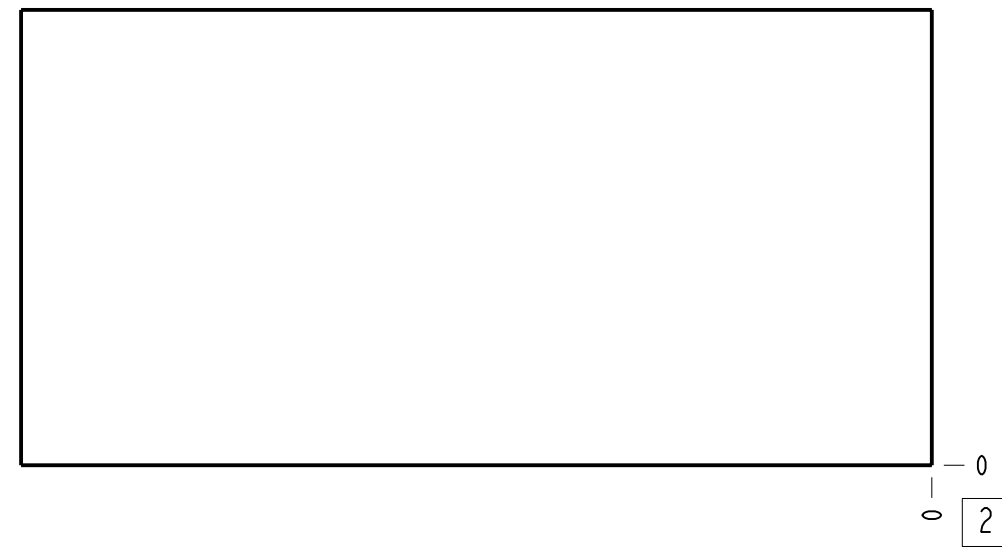


Technical Data	U.S. Units	Metric Units
Cavity		T-10A
Body Features		Ninety degree
Body Type		Line mount
Interface		None
Open Cavity Quantity		1
Weight	0.377 lb.	0,171 kg.
Mounting Hole Diameter	.34 in.	8.6 mm
Mounting Hole Depth		Through
Mounting Hole Quantity		1



Notes

- Important: Carefully consider the maximum system pressure. The pressure rating of the manifold is dependent on the manifold material, with the port type/size a secondary consideration. Manifolds constructed of aluminum are not rated for pressures higher than 3000 psi (210 bar), regardless of the port type/size specified.
- This drawing is for reference only. It is generated by an automated process and does not fall under Sun's document control process.

Port Headings		
Product	Port	Size
FAB	All Ports	3/8" NPTF

I	150-186-002		6061-T6 ALUMINUM	BODY	I
I	PART NO.	SETTING	MATERIAL	PART NAME	Q
T					T
M					Y
MODEL	FAB		ALL DIMENSIONS IN INCH VIEWS ARE THIRD ANGLE		FIRST ANGLE
DESCRIPTION	T-10A Line mount Ninety degree		DATE	SCALE	THIRD ANGLE
			Oct-17-23	1.897	
			DWG SIZE	SHEET	
			C	I	