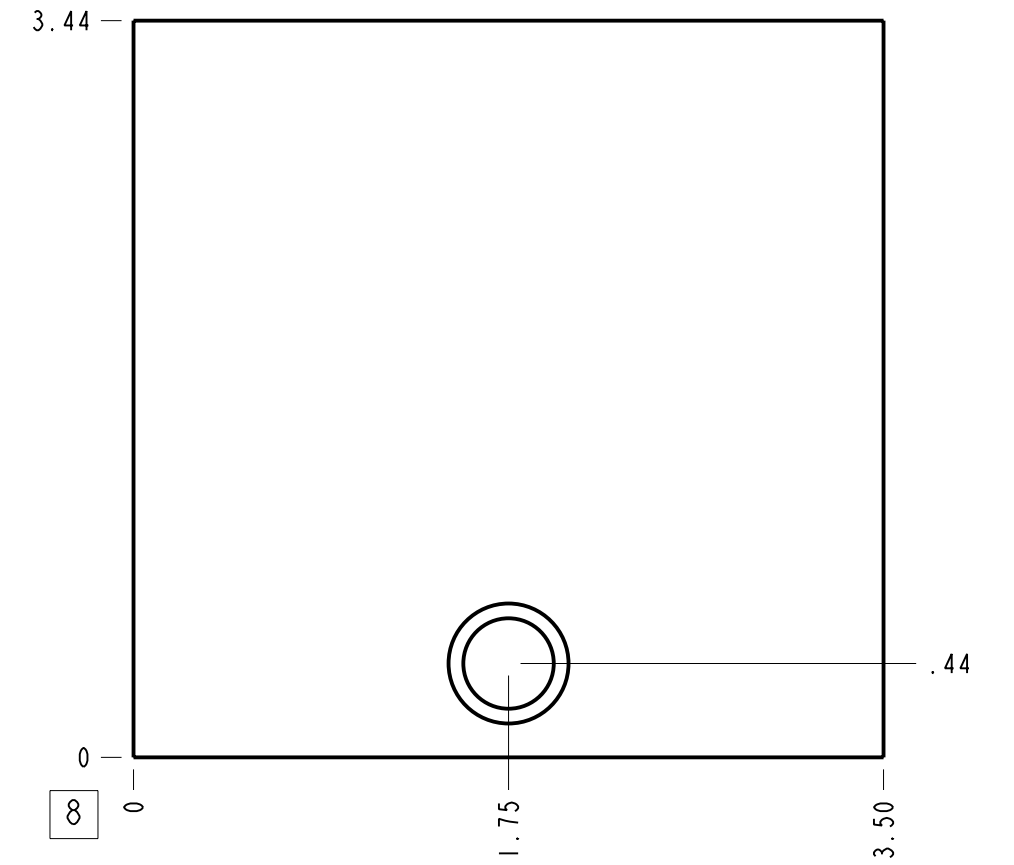
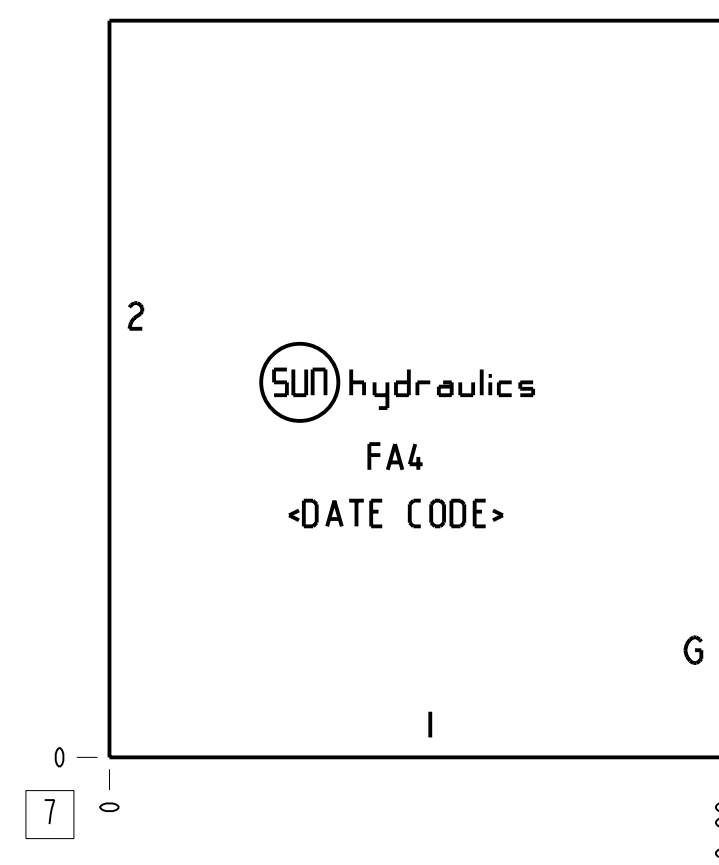
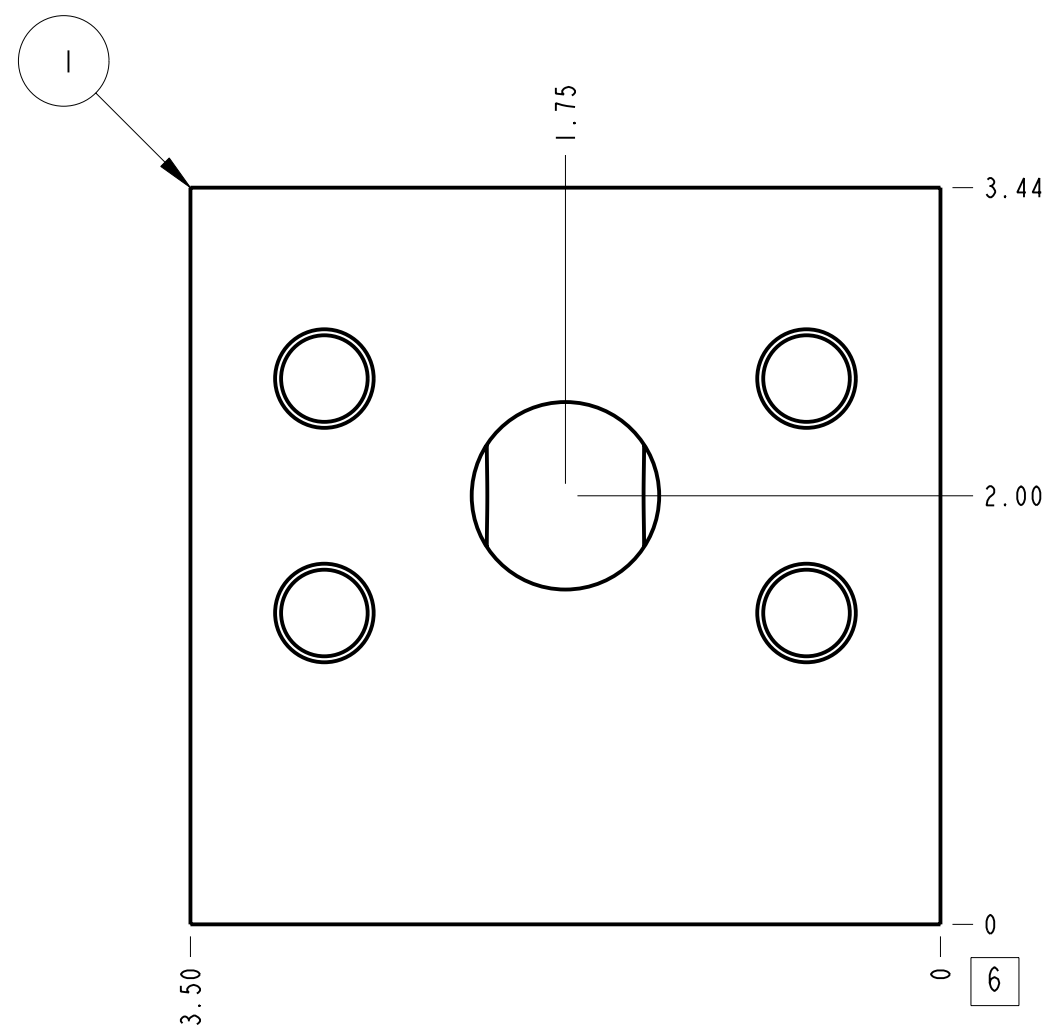
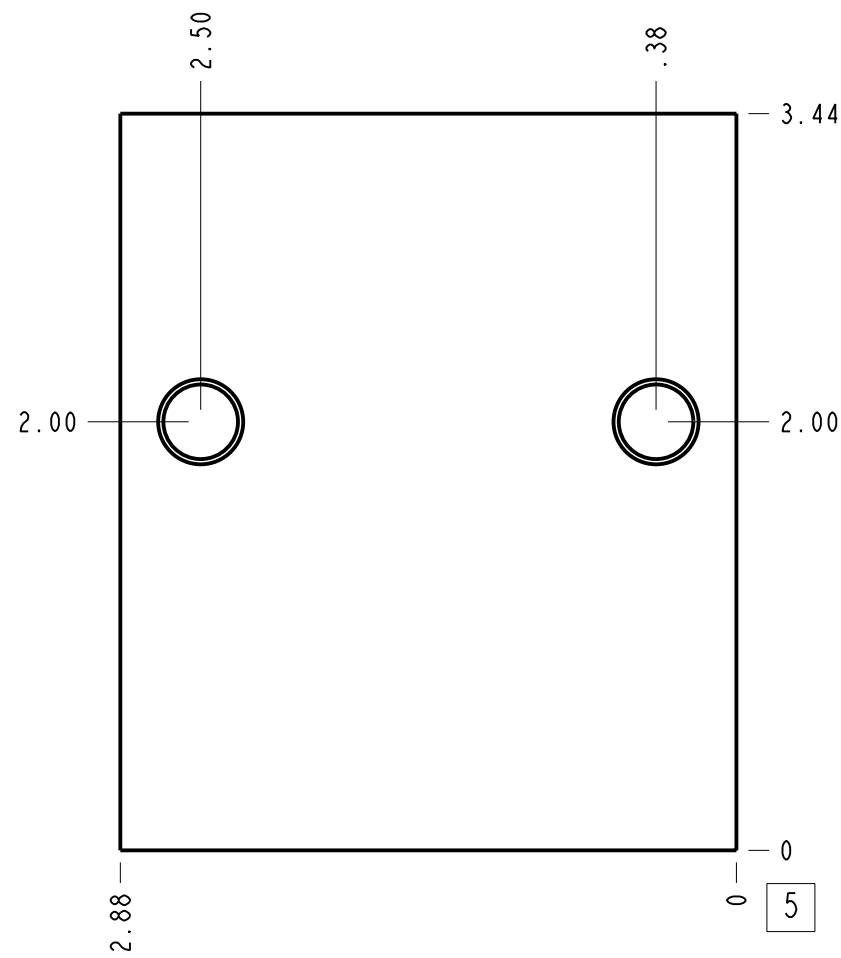
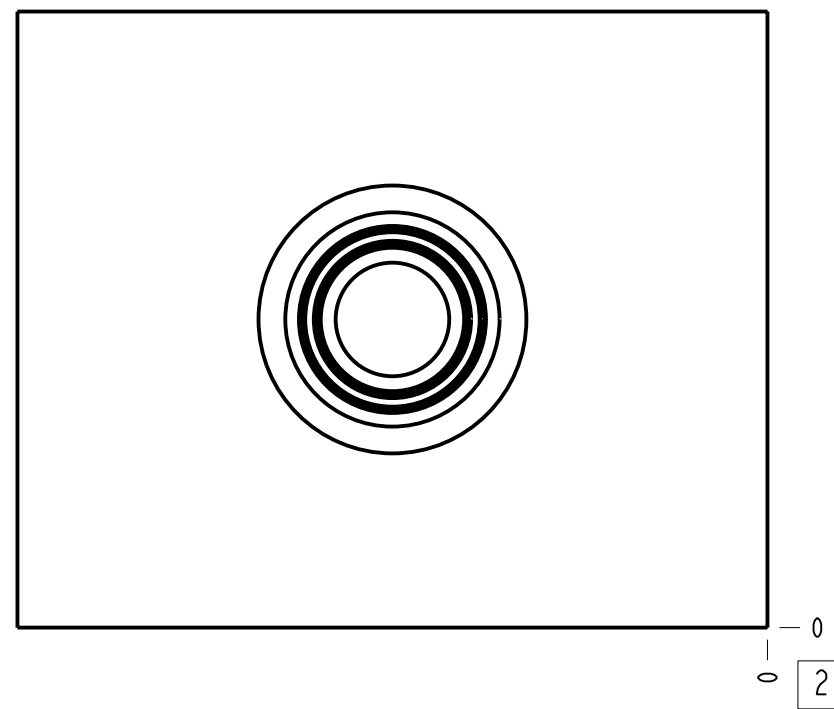
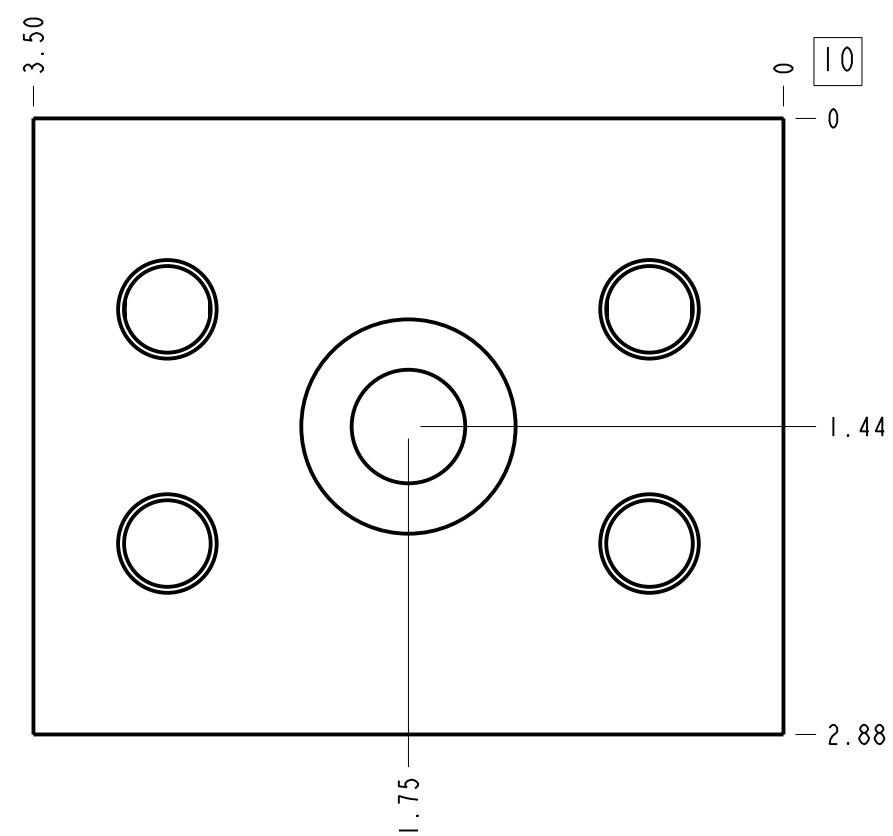


Technical Data	U.S. Units	Metric Units
Cavity	T-10A	
Body Features	Ninety degree	
Body Type	Line mount	
Interface	None	
Open Cavity Quantity	1	
Weight	2.937 lb.	1,332 kg.
Mounting Hole Thread	.375-16 UNC - 2B in.	
Mounting Hole Depth	.62 in.	15,7 mm
Mounting Hole Quantity	2	



Notes

- Important: Carefully consider the maximum system pressure. The pressure rating of the manifold is dependent on the manifold material, with the port type/size a secondary consideration. Manifolds constructed of aluminum are not rated for pressures higher than 3000 psi (210 bar), regardless of the port type/size specified.
- 1.00" SAE Flange mounting hole data: Inch: 7/16-14 UNC x 1.06 (26.9 mm) DP, Metric: M12 x 1,75-6H x 1.06 (26,9 mm) DP
- This drawing is for reference only. It is generated by an automated process and does not fall under Sun's document control process.



Port Headings		
Product	Port	Size
FA4	Ports 1 & 2	1" Code 62
FA4	Gage Port	1/4" NPTF

ITEM	152-281-001	6061-T6 ALUMINUM	BODY	QTY
MODEL	FA4	ALL DIMENSIONS IN INCH VIEWS ARE THIRD ANGLE		FIRST ANGLE
DESCRIPTION	T-10A Line mount Ninety degree	SCALE	DWG SIZE	SHEET
	Sep-24-24	1.116	C	1

