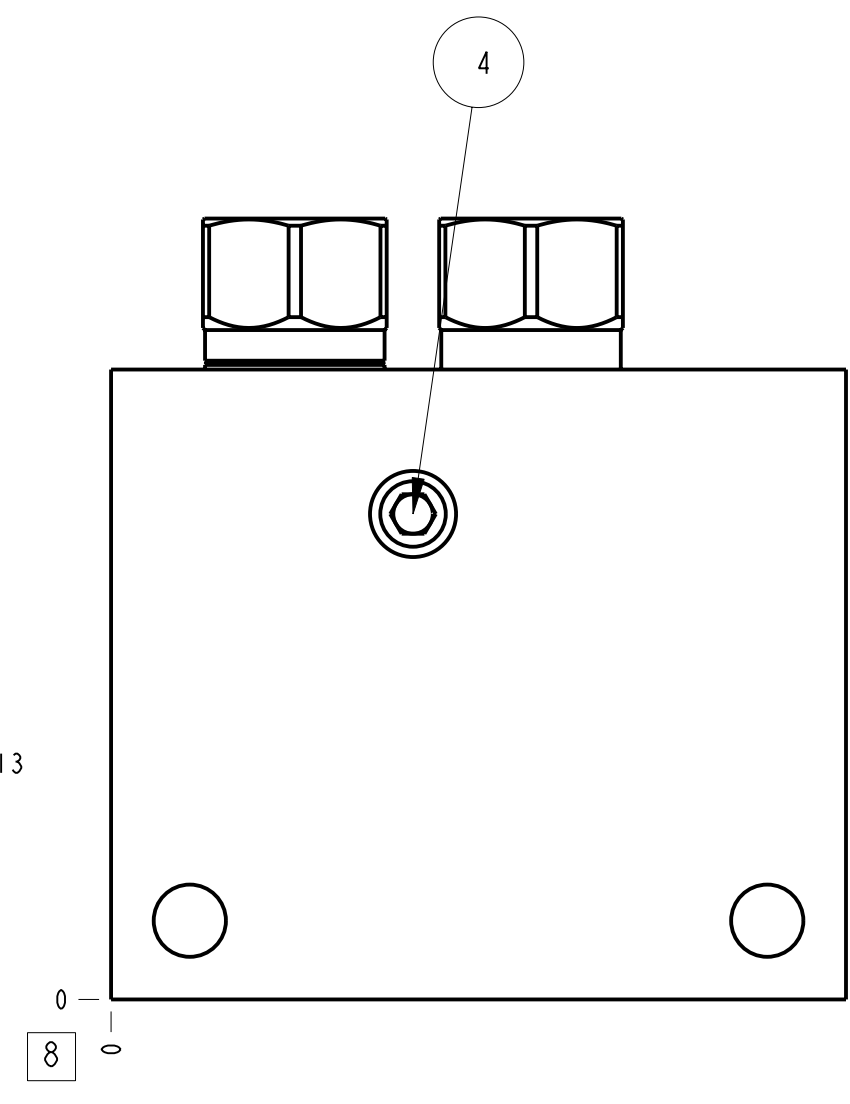
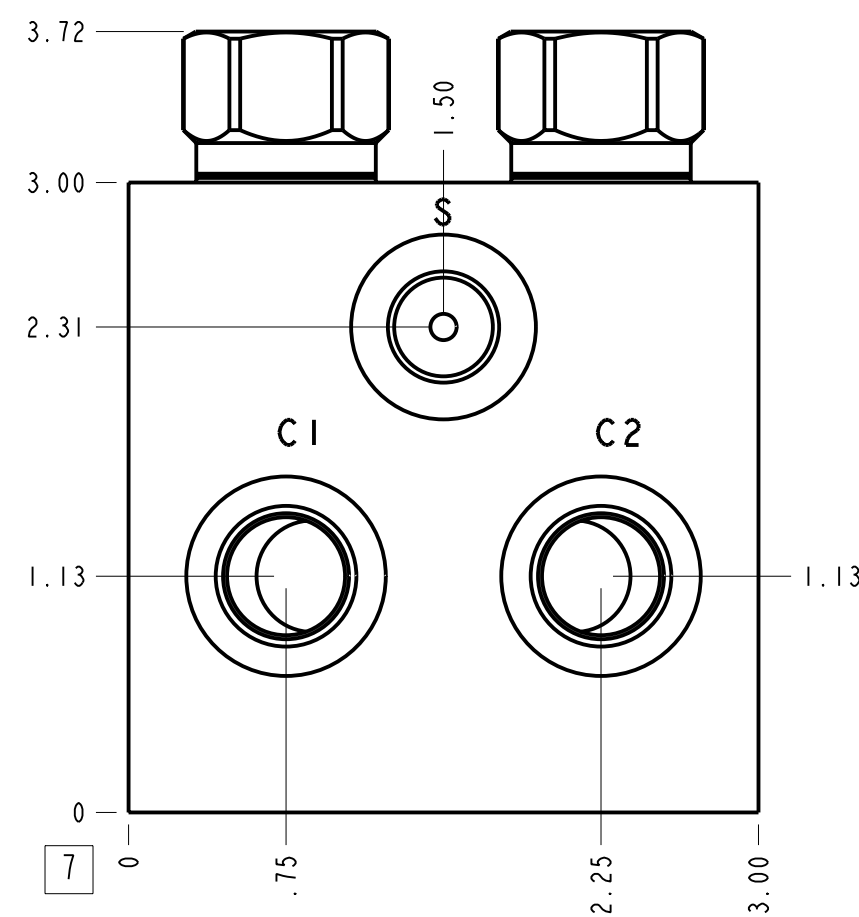
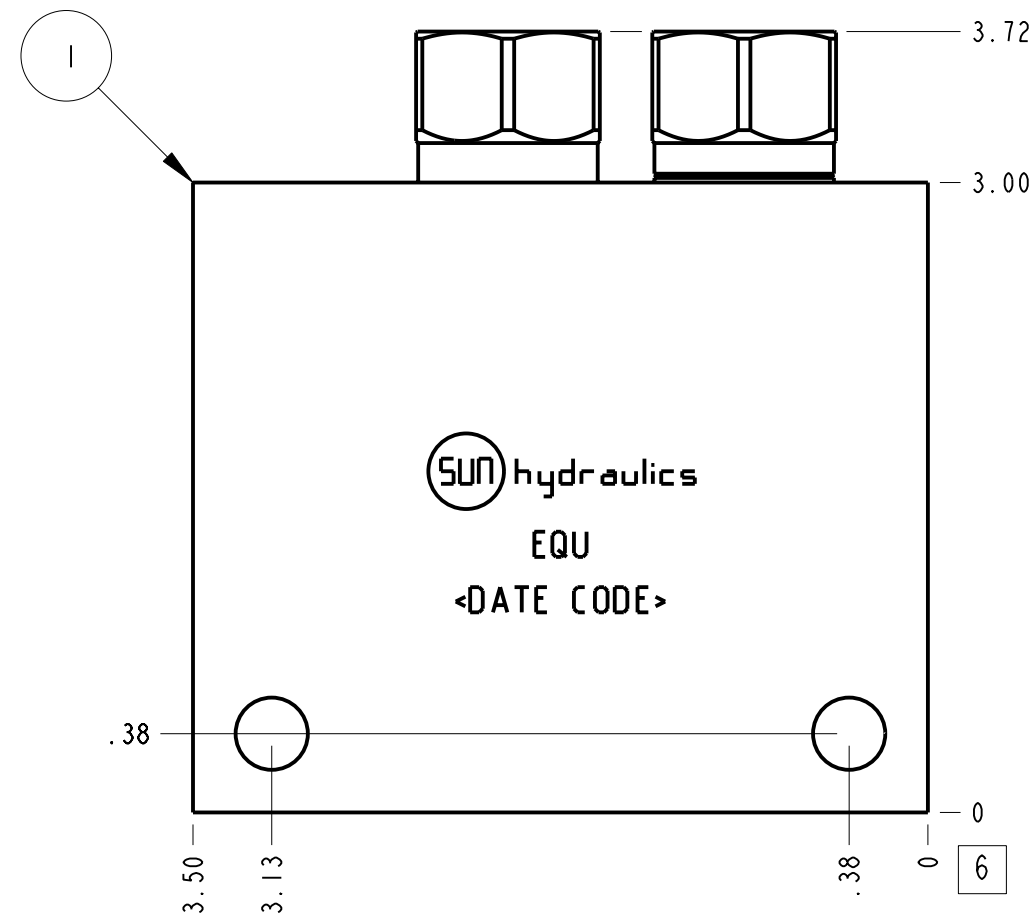
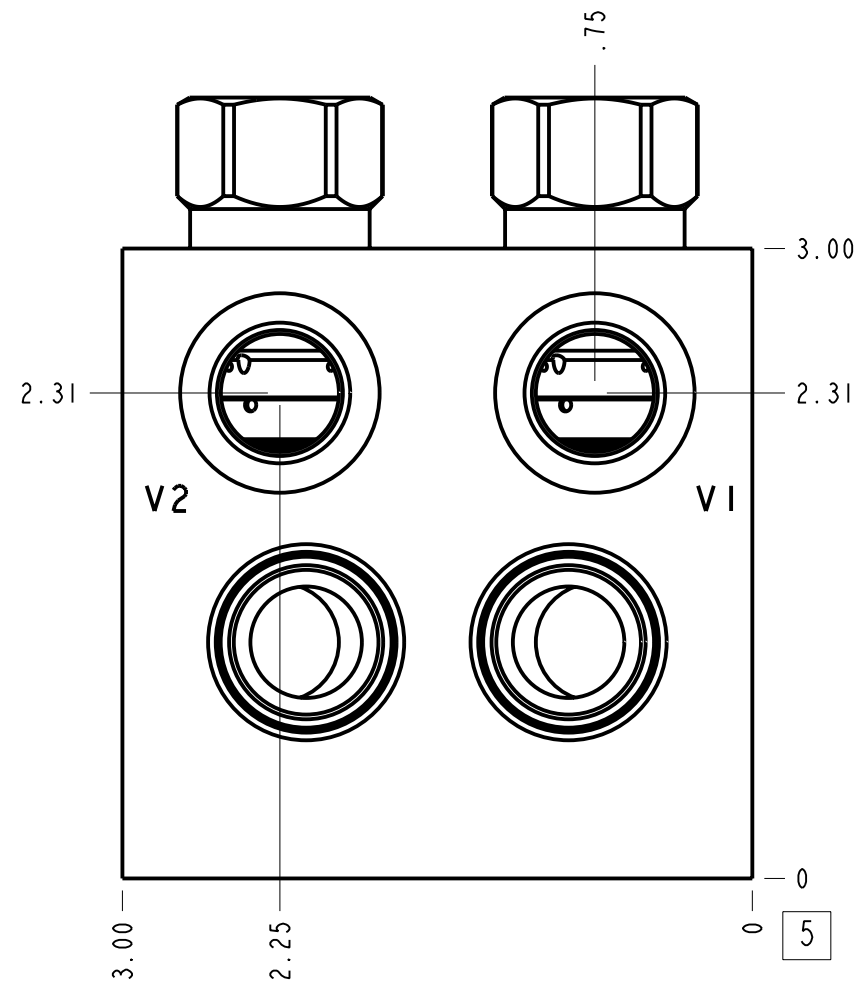
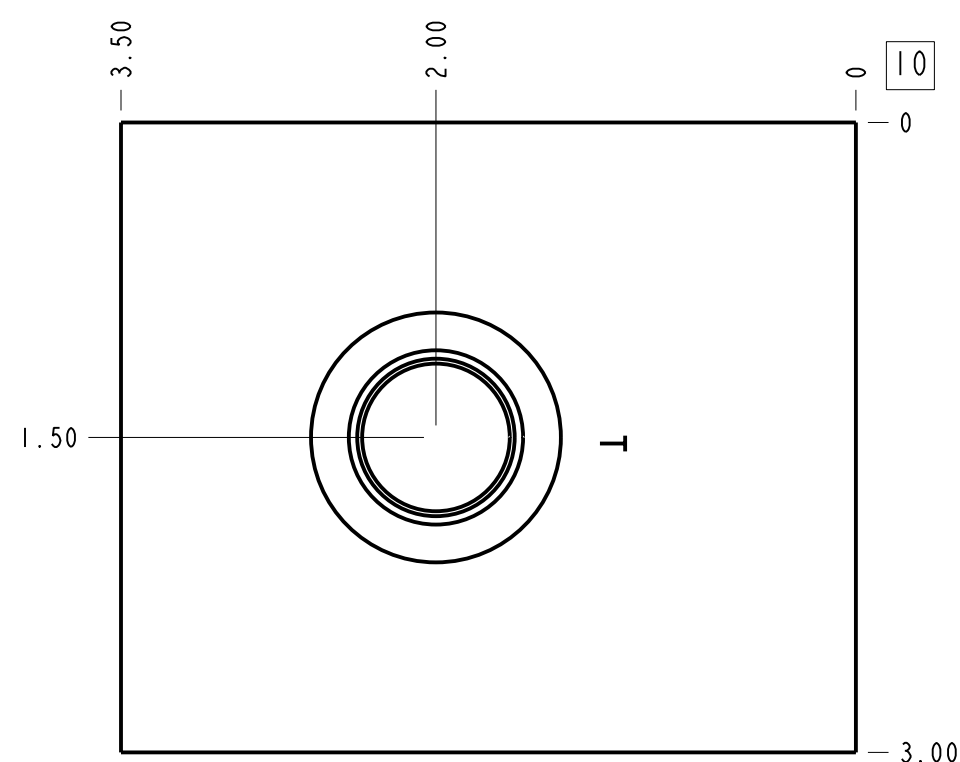


Technical Data	U.S. Units	Metric Units
Cavity	T-11A	
Body Features	Cushion lock with make up checks and shuttle	
Body Type	Line mount	
Interface	None	
Open Cavity Quantity	2	
Weight	3.256 lb.	1,477 kg.
Mounting Hole Diameter	.34 in.	8.6 mm
Mounting Hole Depth	Through	
Mounting Hole Quantity	2	
Includes integral cartridge(s)	Yes (see Included Components)	



Notes

- Important: Carefully consider the maximum system pressure. The pressure rating of the manifold is dependent on the manifold material, with the port type/size a secondary consideration. Manifolds constructed of aluminum are not rated for pressures higher than 3000 psi (210 bar), regardless of the port type/size specified.
- This drawing is for reference only. It is generated by an automated process and does not fall under Sun's document control process.
- Items without balloons are shipped loose.



Port Headings		
Product	Port	Size
EQU	Ports C1, C2, V1, V2	3/8" BSPP
EQU	Port T	1/2" BSPP
EQU	Port S	1/4" BSPP

6	800-001-070			BALL	1
5	260-010			SEAT	1
4	340-002			PLUG-.125-27 NPTF	1
3	CXDAXAN			CHECK VALVE	2
2	CXCDXAN			CHECK VALVE	2
1	150-836-005		6061-T6 ALUMINUM	BODY	1
ITEM	PART NO.	SETTING	MATERIAL	PART NAME	QTY

MODEL		EQU		ALL DIMENSIONS IN INCH VIEWS ARE THIRD ANGLE		FIRST ANGLE		THIRD ANGLE	
DESCRIPTION		DATE	SCALE	DWG SIZE	SHEET				
T-11A Line mount (See Technical Data for Body Features)		Aug-18-23	1.094	C	1				