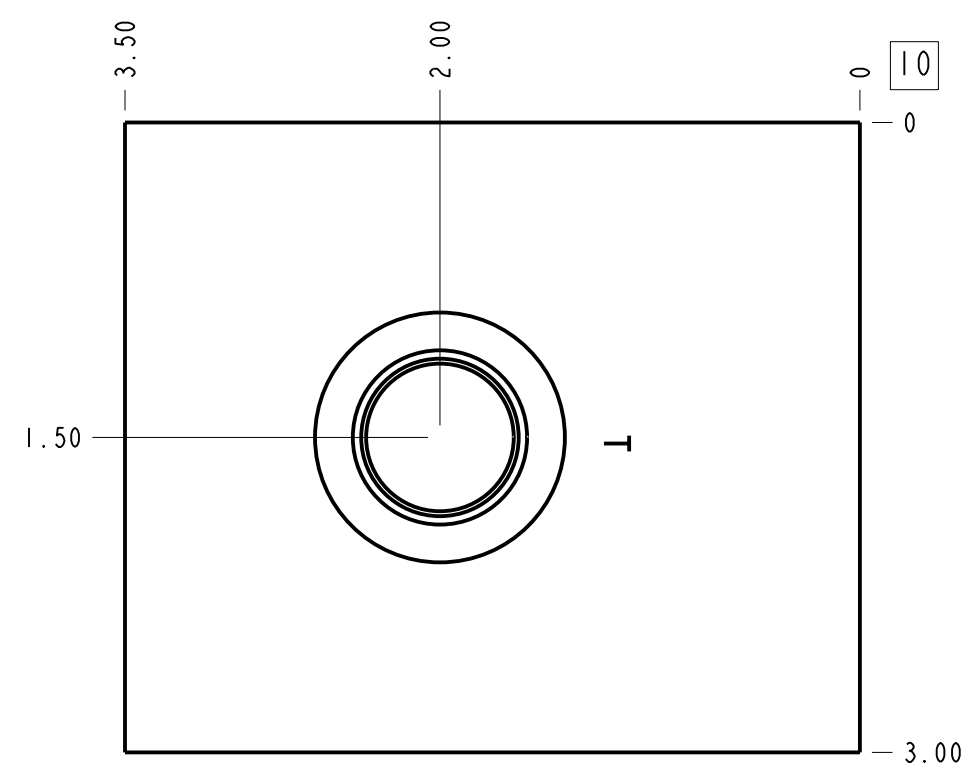
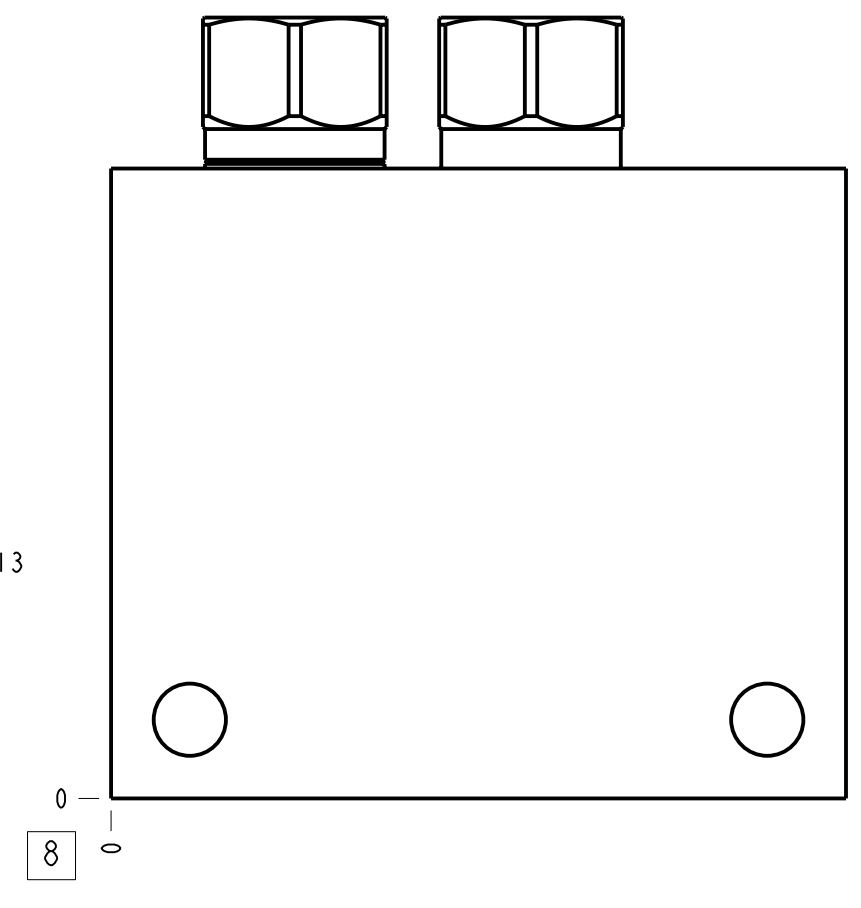
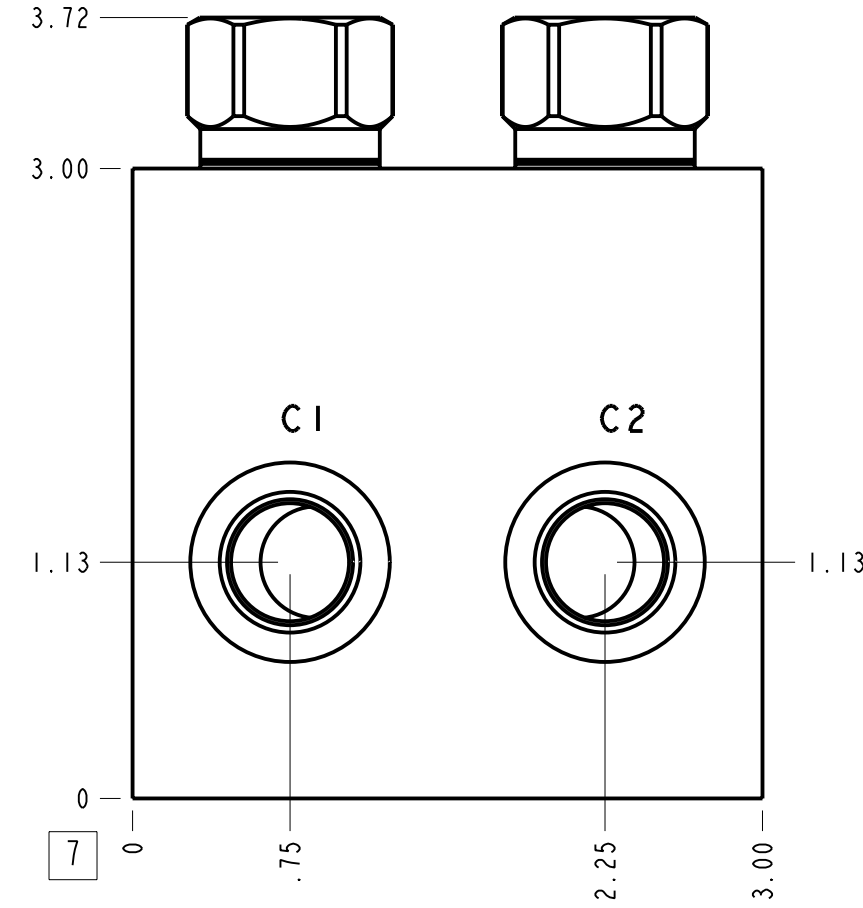
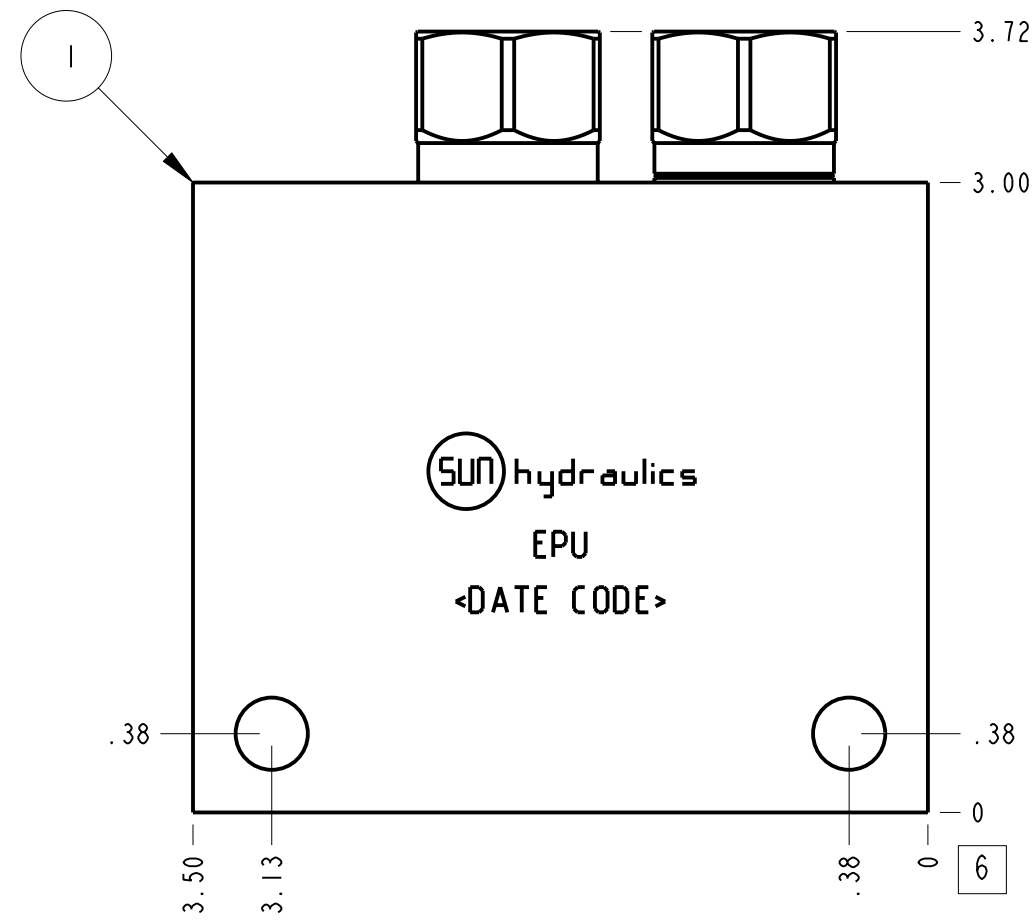
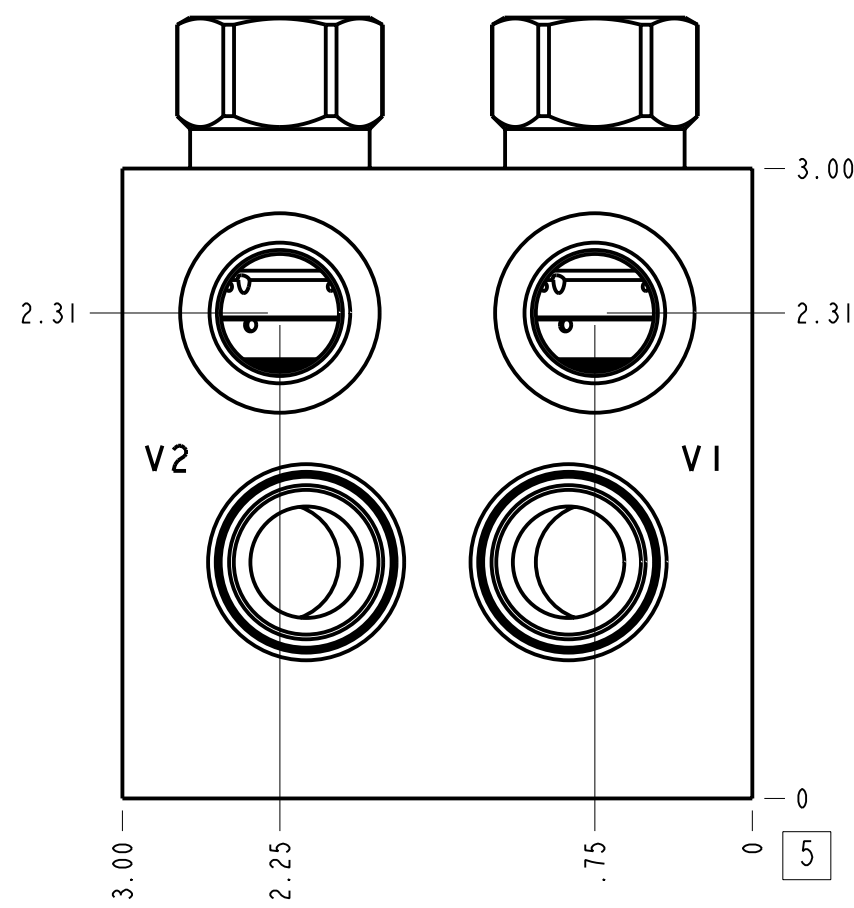


Technical Data	U.S. Units	Metric Units
Cavity	T-11A	
Body Features	Cushion lock with make up checks	
Body Type	Line mount	
Interface	None	
Open Cavity Quantity	2	
Weight	3.263 lb.	1,480 kg.
Mounting Hole Diameter	.34 in.	8.6 mm
Mounting Hole Depth	Through	
Mounting Hole Quantity	2	



Notes

- Important: Carefully consider the maximum system pressure. The pressure rating of the manifold is dependent on the manifold material, with the port type/size a secondary consideration. Manifolds constructed of aluminum are not rated for pressures higher than 3000 psi (210 bar), regardless of the port type/size specified.
- This drawing is for reference only. It is generated by an automated process and does not fall under Sun's document control process.

Port Headings		
Product	Port	Size
EPU	Ports C1, C2, V1, V2	3/8" BSPP
EPU	Port T	1/2" BSPP

3	CXDAXAN		CHECK VALVE	2	
2	CXCDXAN		CHECK VALVE	2	
1	150-835-005	6061-T6 ALUMINUM	BODY	1	
ITEM	PART NO.	SETTING	MATERIAL	PART NAME	QTY

MODEL		EPU		ALL DIMENSIONS IN INCH VIEWS ARE THIRD ANGLE		FIRST ANGLE		THIRD ANGLE	
DESCRIPTION				DATE	SCALE	DWG SIZE	SHEET		
T-11A Line mount Cushion lock with make up checks				Jan-19-24	1.094	C	1		