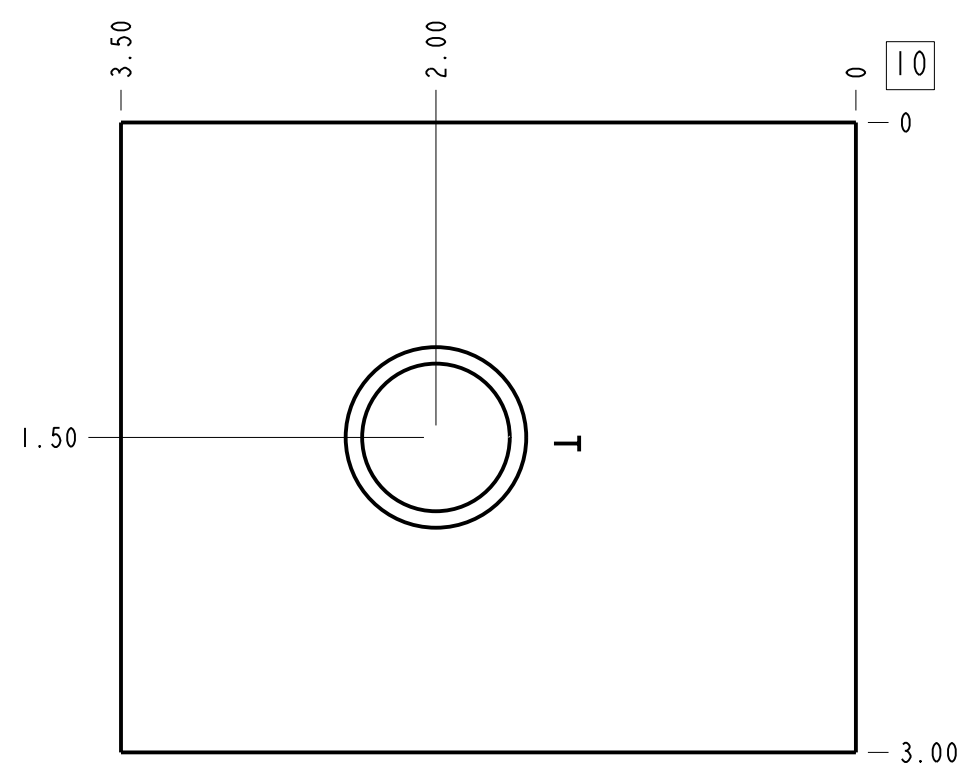
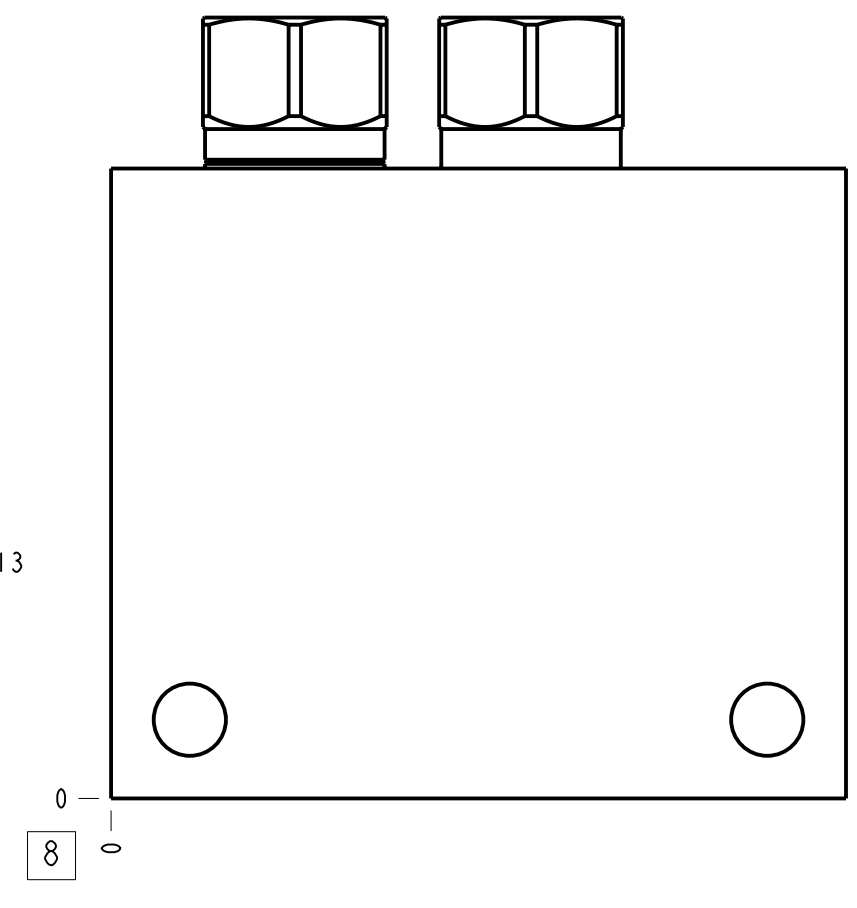
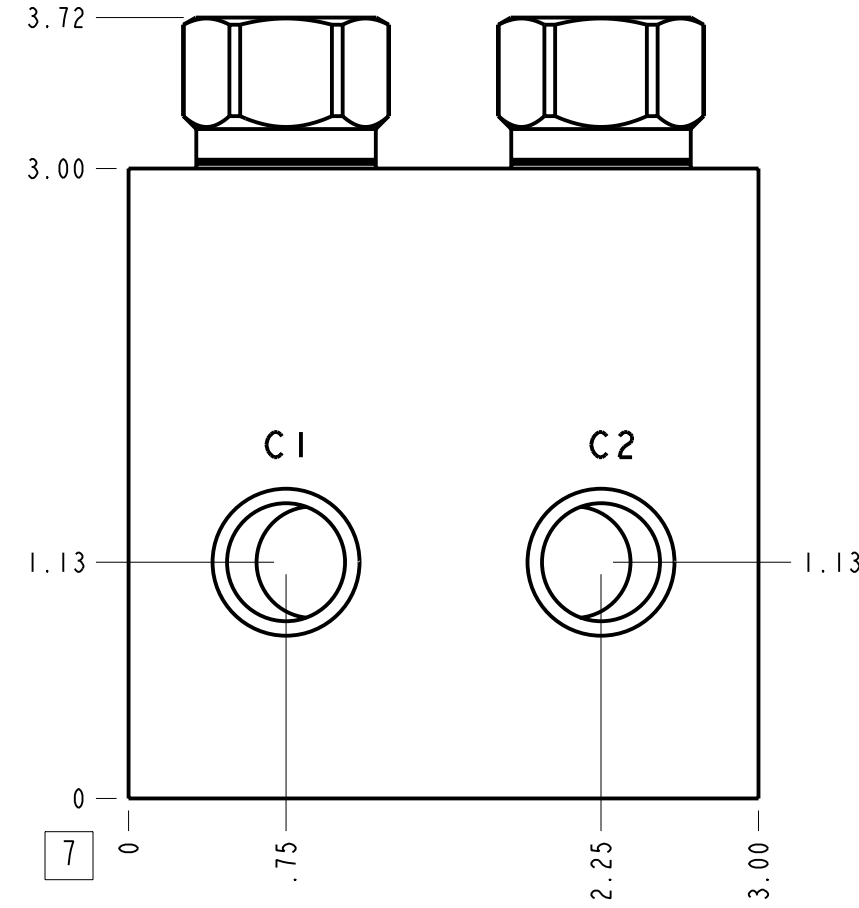
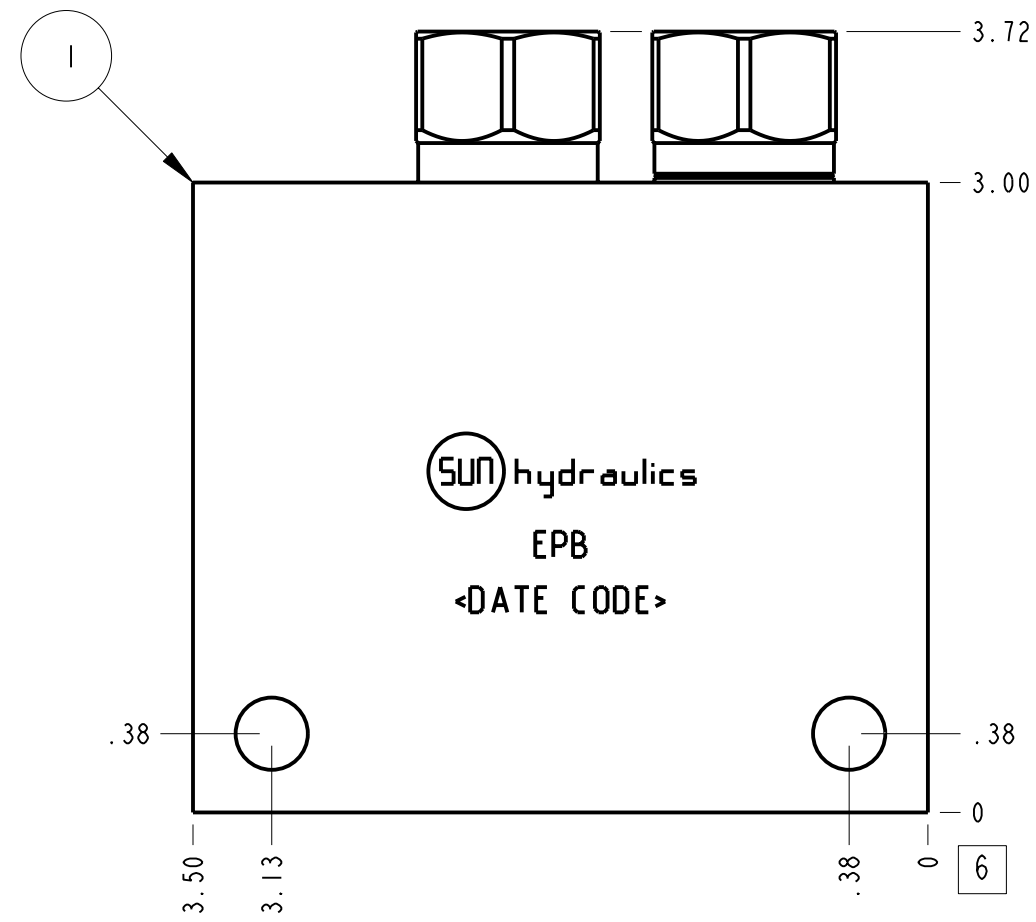
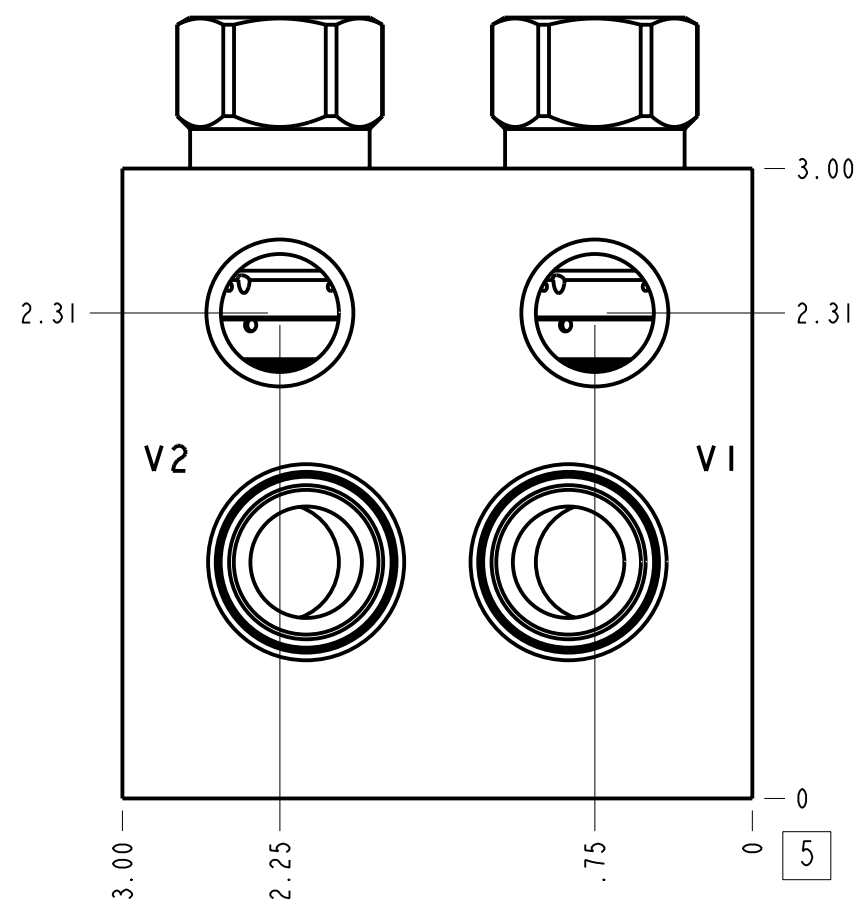


Technical Data	U.S. Units	Metric Units
Cavity	T-11A	
Body Features	Cushion lock with make up checks	
Body Type	Line mount	
Interface	None	
Open Cavity Quantity	2	
Weight	3.278 lb.	1,487 kg.
Mounting Hole Diameter	.34 in.	8.6 mm
Mounting Hole Depth	Through	
Mounting Hole Quantity	2	
Includes integral cartridge(s)	Yes (see Included Components)	



**Notes**

- Important: Carefully consider the maximum system pressure. The pressure rating of the manifold is dependent on the manifold material, with the port type/size a secondary consideration. Manifolds constructed of aluminum are not rated for pressures higher than 3000 psi (210 bar), regardless of the port type/size specified.
- This drawing is for reference only. It is generated by an automated process and does not fall under Sun's document control process.

Port Headings		
Product	Port	Size
EPB	Ports C1,C2,V1,V2	3/8" NPTF
EPB	Port T	1/2" NPTF

3	CXDAXAN		CHECK VALVE	2	
2	CXCDXAN		CHECK VALVE	2	
1	150-835-001	6061-T6 ALUMINUM	BODY	1	
ITEM	PART NO.	SETTING	MATERIAL	PART NAME	QTY

MODEL		EPB		ALL DIMENSIONS IN INCH VIEWS ARE THIRD ANGLE		FIRST ANGLE		THIRD ANGLE	
DESCRIPTION				DATE	SCALE	DWG SIZE	SHEET		
T-11A Line mount Cushion lock with make up checks				Aug-21-24	1.094	C	1		