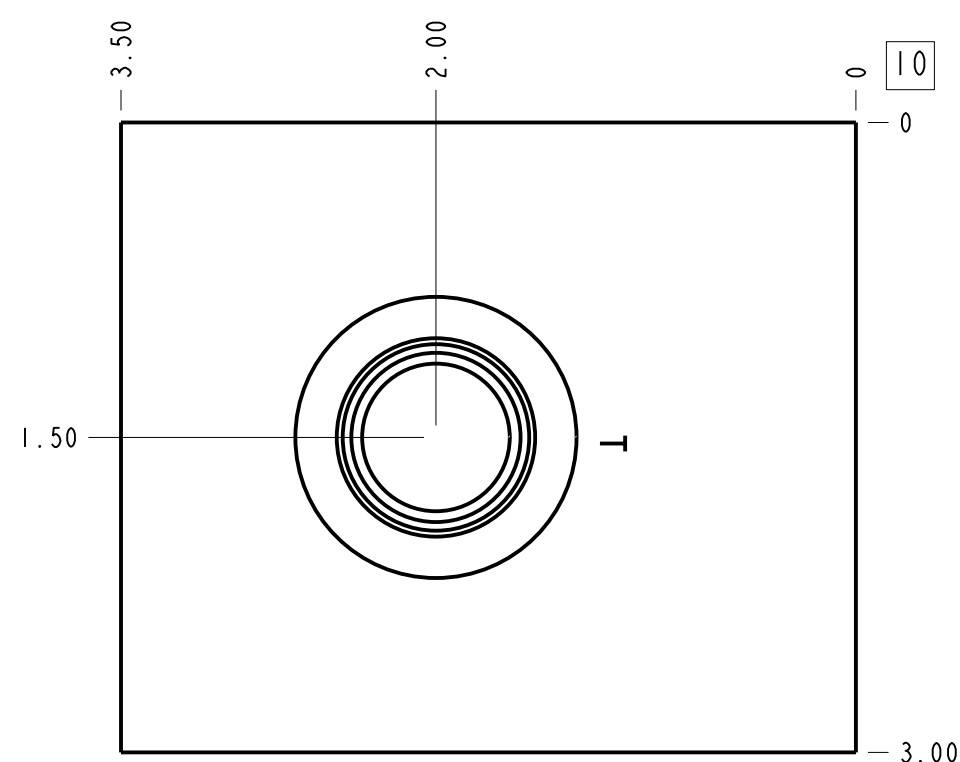
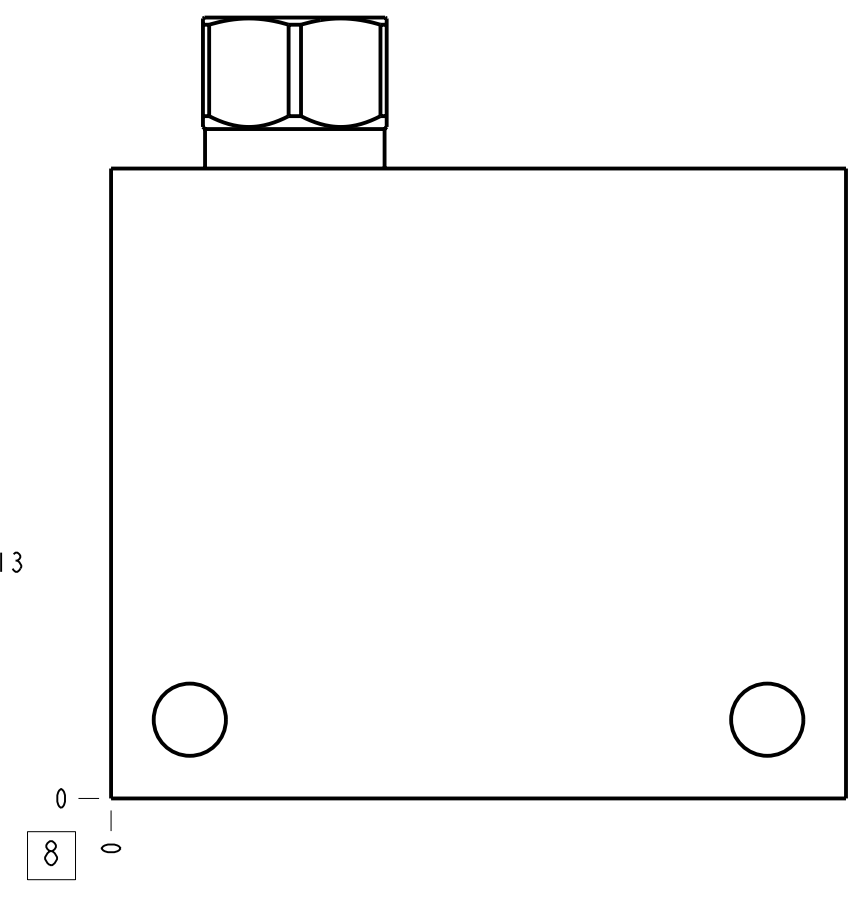
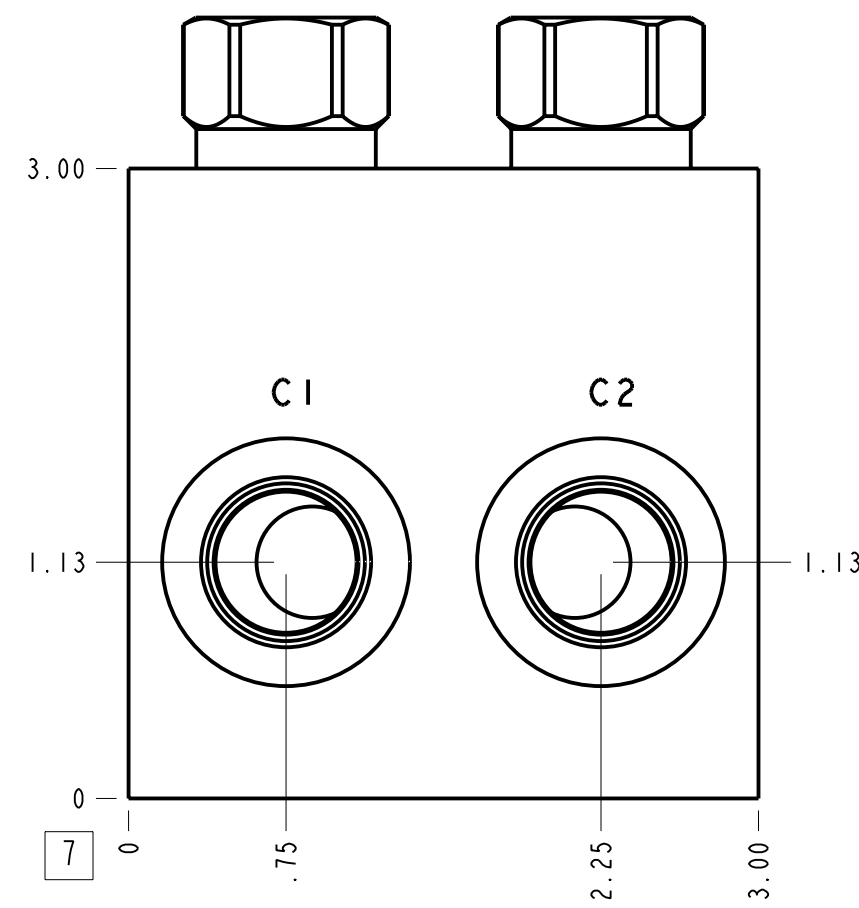
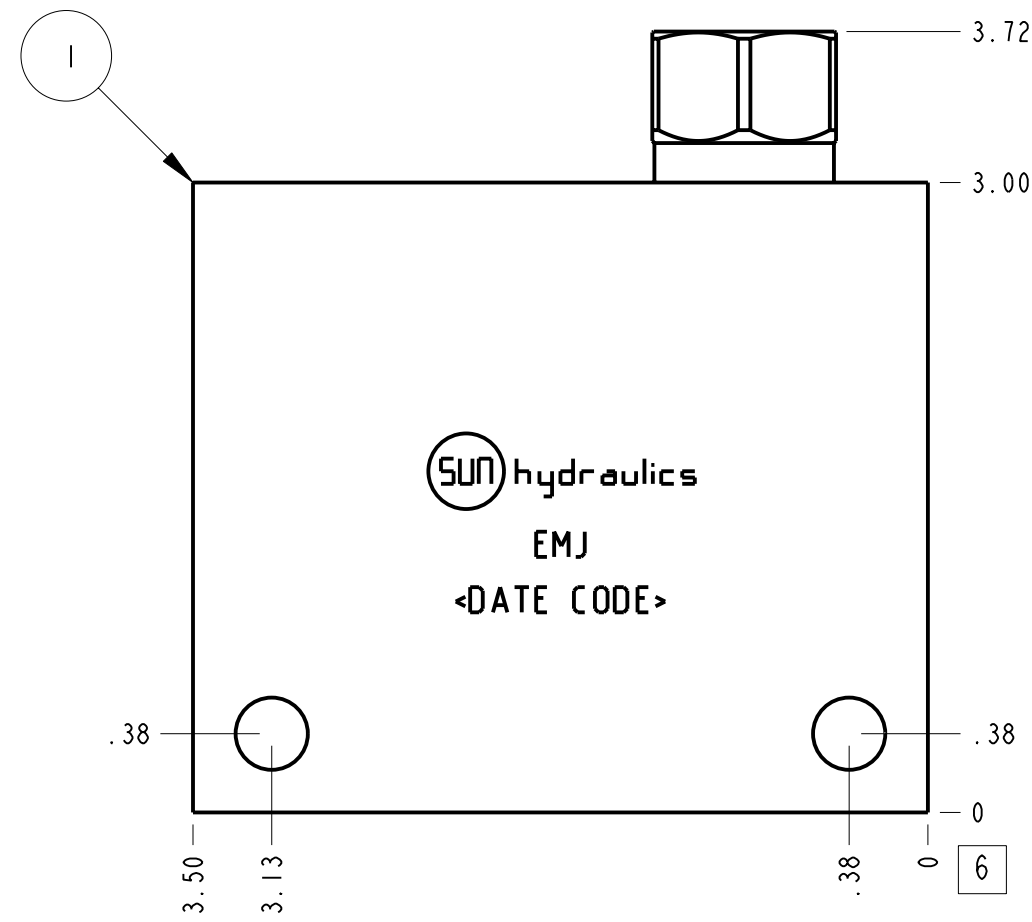
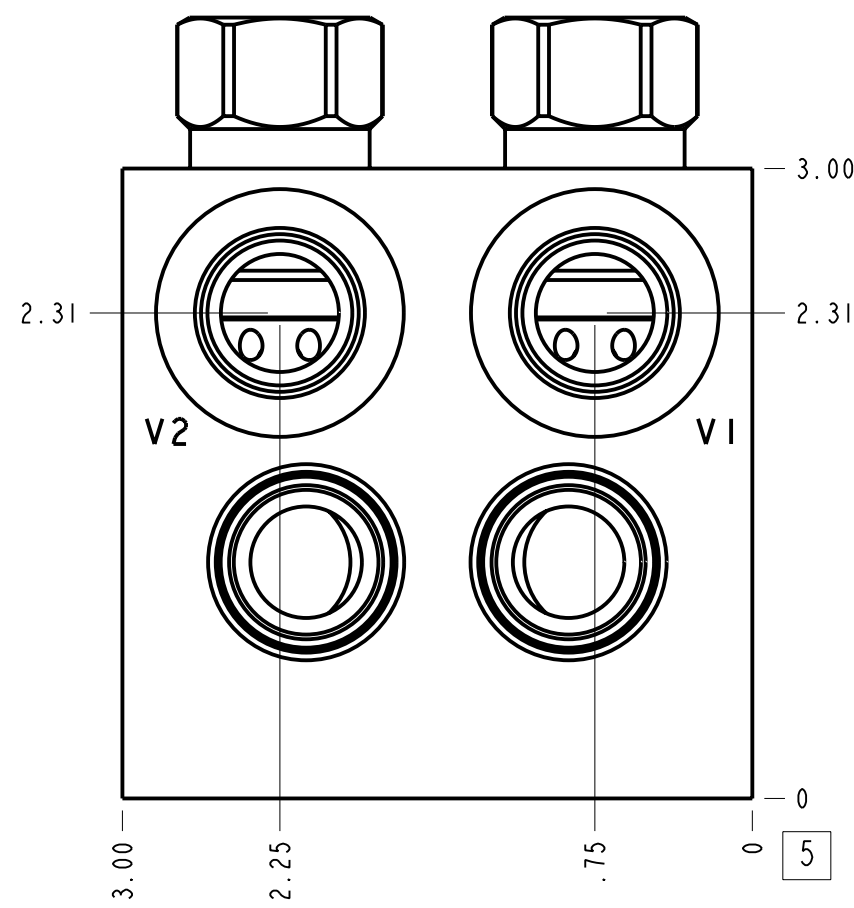


Technical Data	U.S. Units	Metric Units
Cavity		T-11A
Body Features		Cushion lock
Body Type		Line mount
Interface		None
Open Cavity Quantity		2
Weight	2.825 lb.	1,282 kg.
Mounting Hole Diameter	.34 in.	8.6 mm
Mounting Hole Depth		Through
Mounting Hole Quantity		2



Notes

- Important: Carefully consider the maximum system pressure. The pressure rating of the manifold is dependent on the manifold material, with the port type/size a secondary consideration. Manifolds constructed of aluminum are not rated for pressures higher than 3000 psi (210 bar), regardless of the port type/size specified.
- This drawing is for reference only. It is generated by an automated process and does not fall under Sun's document control process.

Port Headings		
Product	Port	Size
EMJ	Ports C1, C2, V1, V2	SAE 8
EMJ	Port T	SAE 10

2	CXCD-XCN		CHECK VALVE	2	
1	150-587-003	6061-T6 ALUMINUM	BODY	1	
ITEM	PART NO.	SETTING	MATERIAL	PART NAME	QTY
	EMJ		ALL DIMENSIONS IN INCH VIEWS ARE THIRD ANGLE		
DESCRIPTION		DATE	SCALE	DWG SIZE	SHEET
T-11A Line mount Cushion lock		Feb-16-24	1.094	C	1

