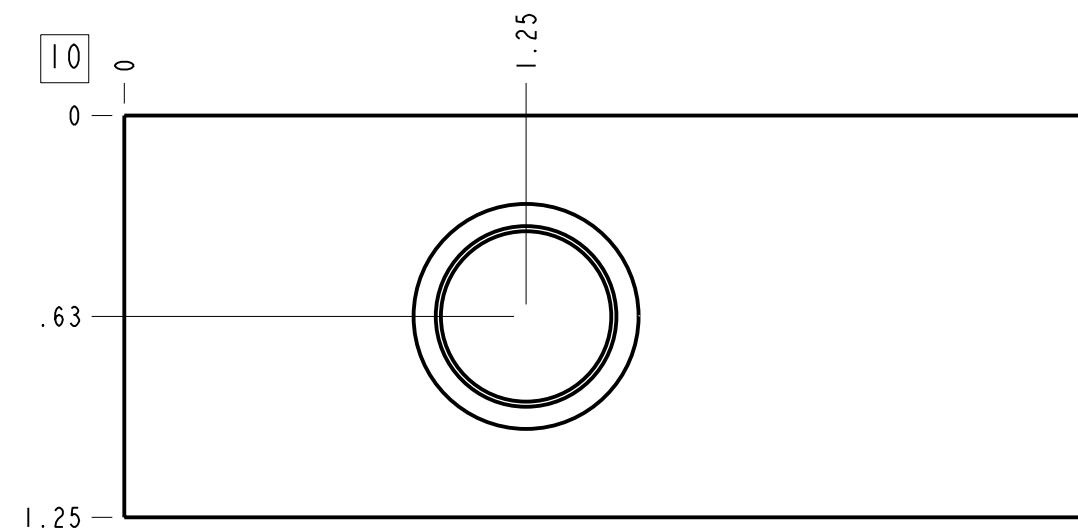
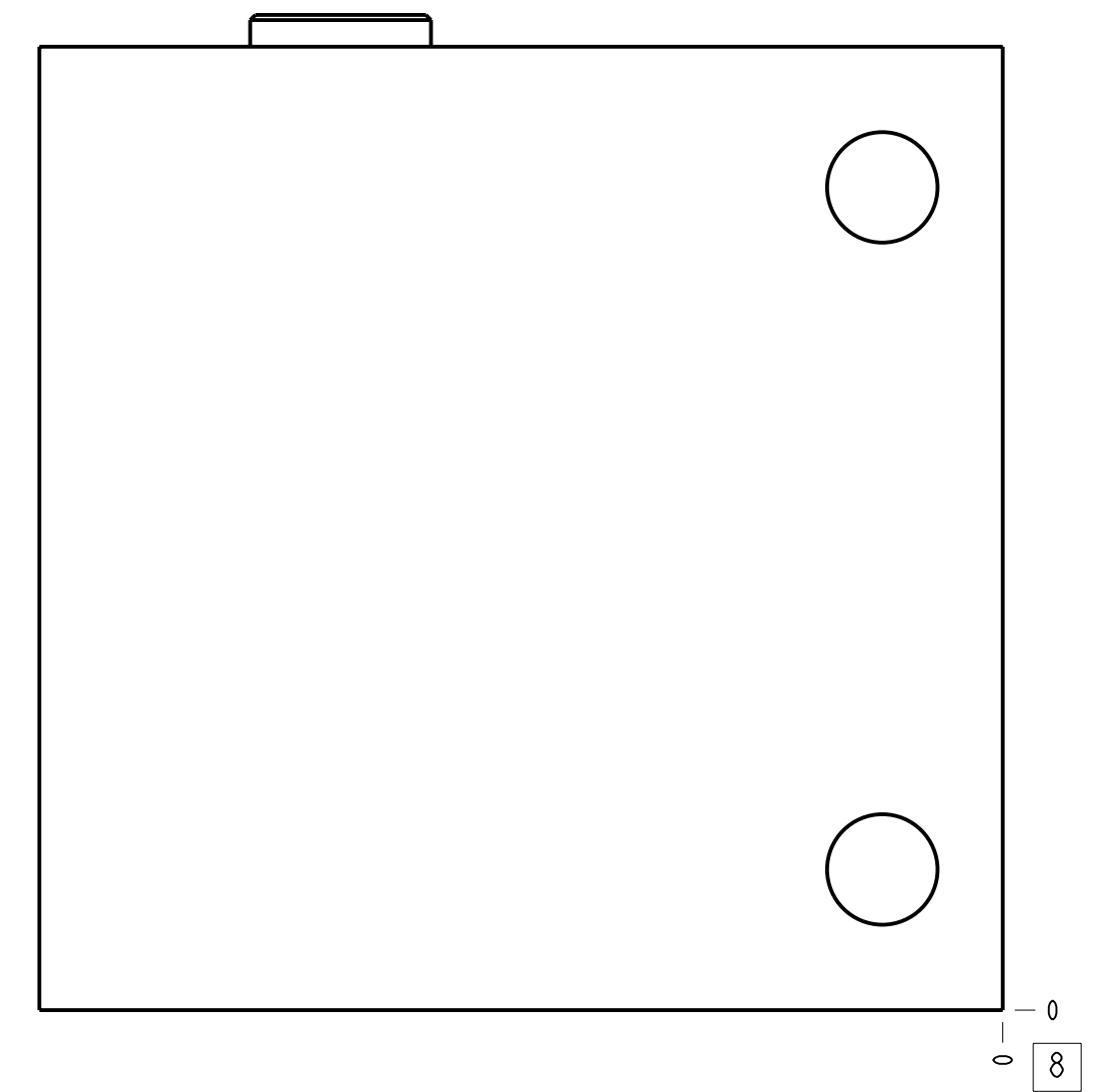
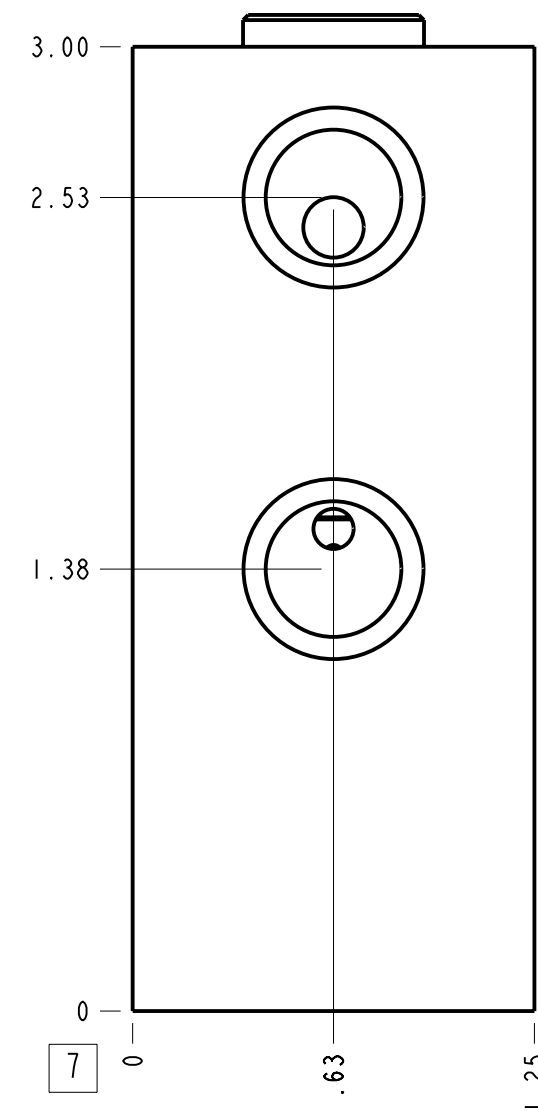
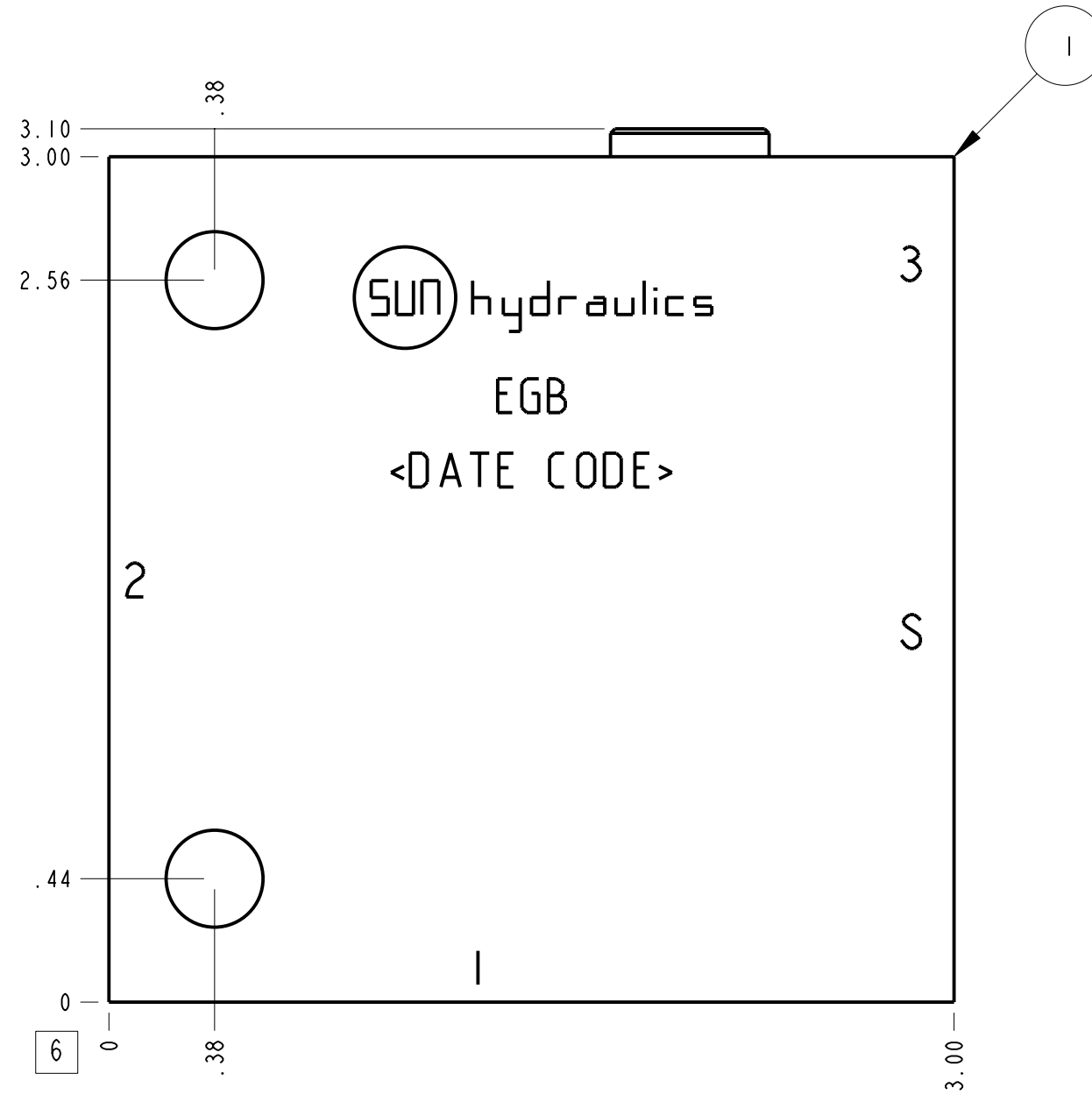
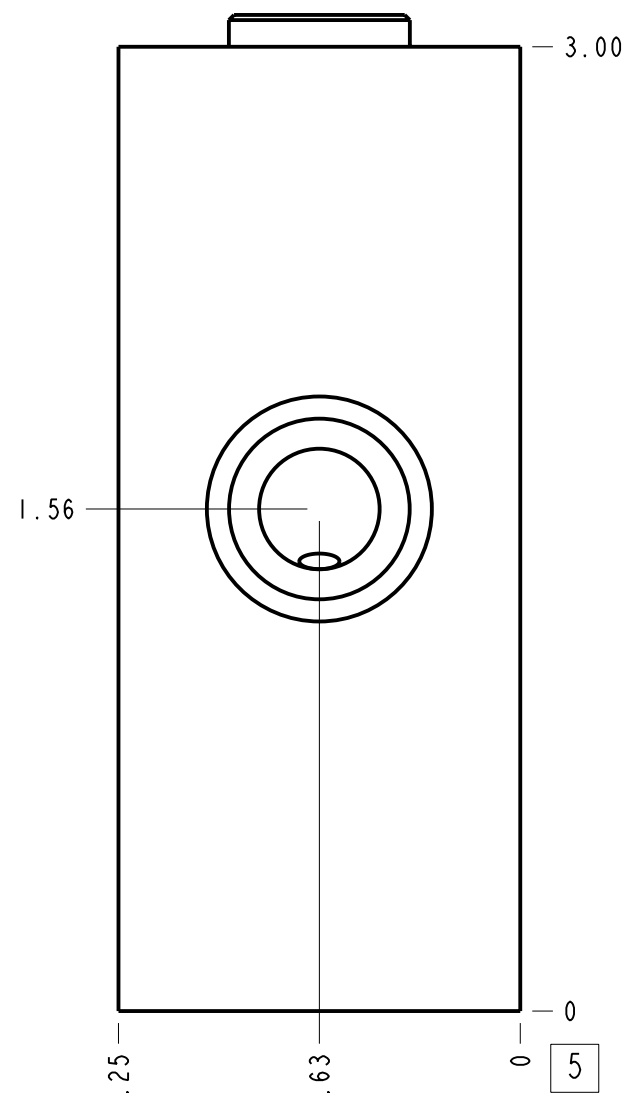
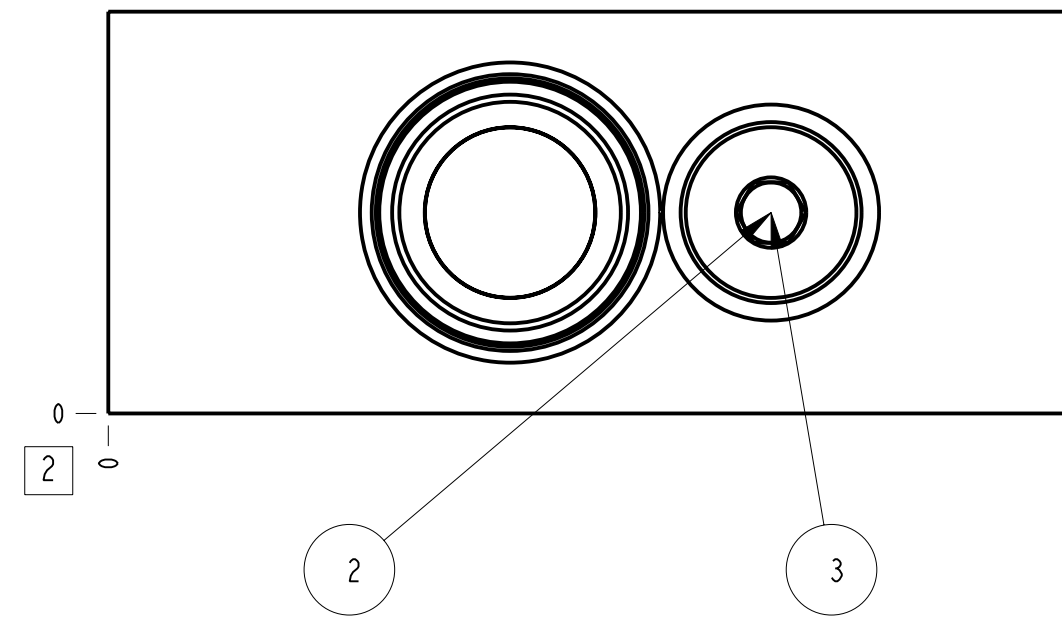


Technical Data	U.S. Units	Metric Units
Cavity	T-11A	
Body Features	Ninety degree with shuttle	
Body Type	Line mount	
Interface	None	
Open Cavity Quantity	1	
Weight	0.930 lb.	0.422 kg.
Mounting Hole Diameter	.34 in.	8.6 mm
Mounting Hole Depth	Through	
Mounting Hole Quantity	2	
Includes integral cartridge(s)	Yes (see Included Components)	



Notes

- Important: Carefully consider the maximum system pressure. The pressure rating of the manifold is dependent on the manifold material, with the port type/size a secondary consideration. Manifolds constructed of aluminum are not rated for pressures higher than 3000 psi (210 bar), regardless of the port type/size specified.
- This drawing is for reference only. It is generated by an automated process and does not fall under Sun's document control process.

Port Headings		
Product	Port	Size
EGB	Ports 1 & 2	3/8" NPTF
EGB	Ports 3 & S	1/4" NPTF

3	A330-006-004		SAE-4 PLUG	1	
2	CSZNXXN		SHUTTLE VALVE	1	
1	150-544-002	6061-T6 ALUMINUM	BODY	1	
ITEM	PART NO.	SETTING	MATERIAL	PART NAME	QTY

MODEL: EGB

ALL DIMENSIONS IN INCH
VIEWS ARE THIRD ANGLE

DESCRIPTION: T-11A Line mount
Ninety degree with shuttle

DATE: Sep-20-24

SCALE: 1.674

DWG SIZE: C

SHEET: 1

FIRST ANGLE

THIRD ANGLE