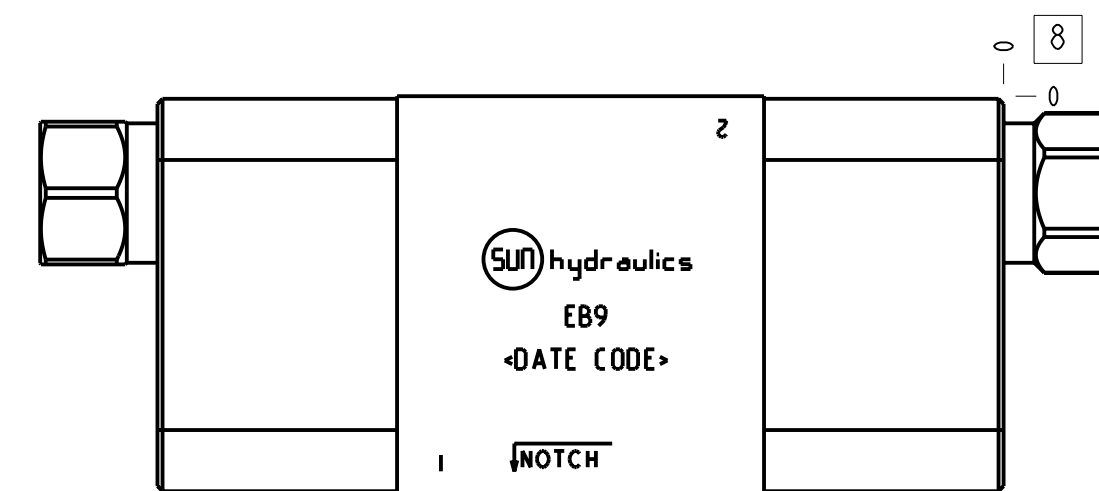
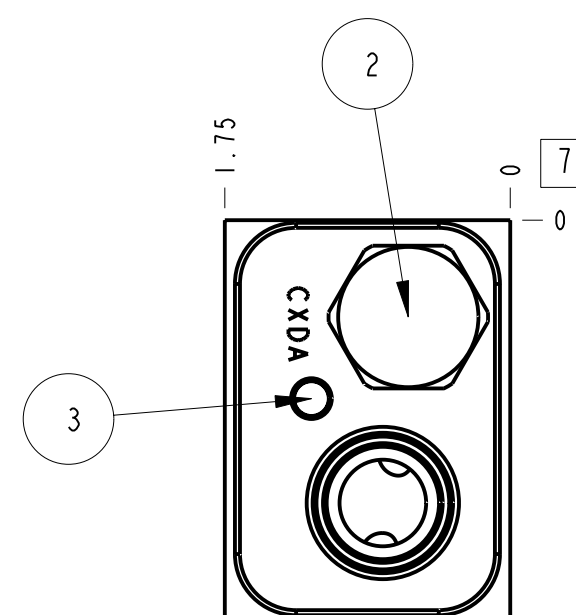
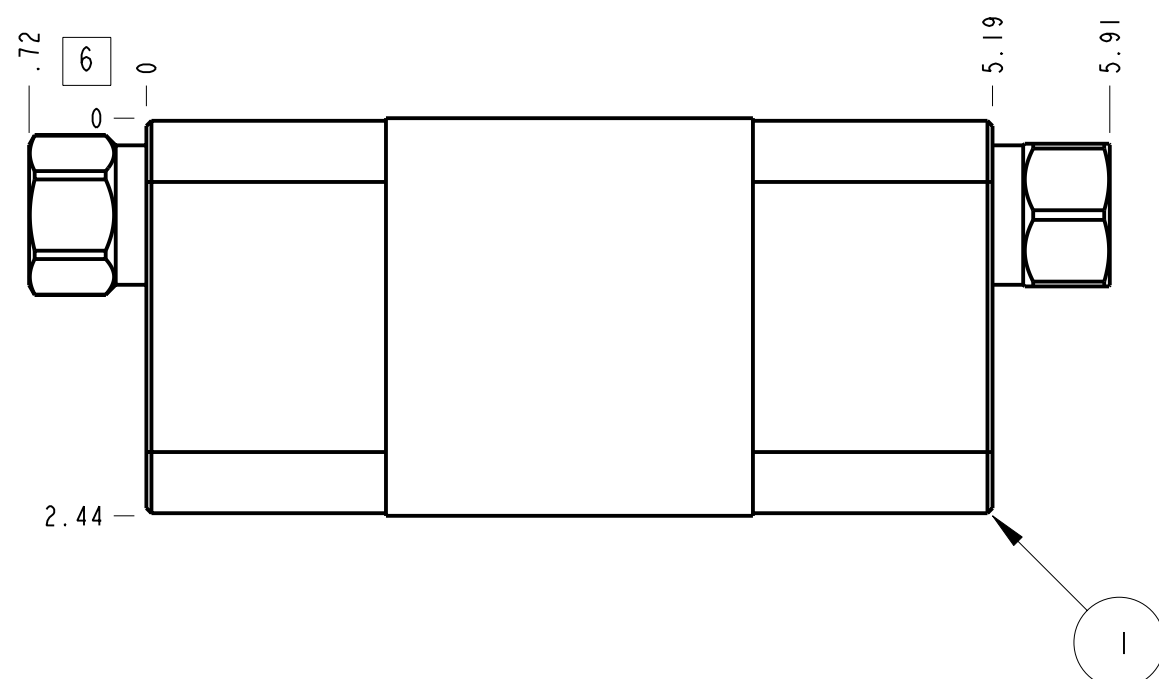
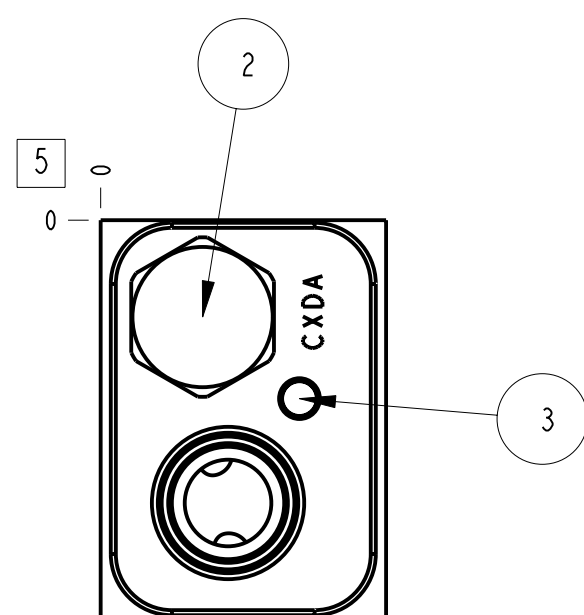
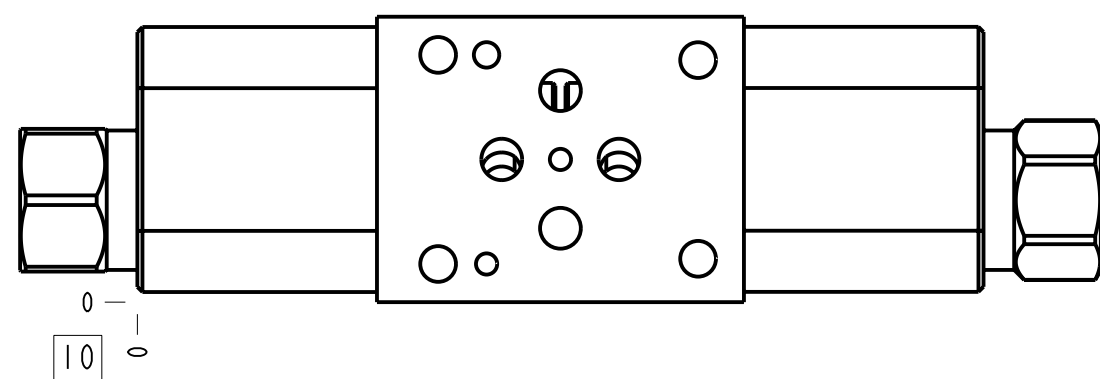


Technical Data	U.S. Units	Metric Units
Cavity	T-11A	
Body Features	Reducer on A and B with reverse flow check	
Body Type	Sandwich	
Interface	ISO 03	
Open Cavity Quantity	2	
Stack Height	2.49 in.	63 mm
Weight	2.105 lb.	0,955 kg.



Notes

1. Important: Carefully consider the maximum system pressure. The pressure rating of the manifold is dependent on the manifold material, with the port type/size a secondary consideration. Manifolds constructed of aluminum are not rated for pressures higher than 3000 psi (210 bar), regardless of the port type/size specified.
2. This drawing is for reference only. It is generated by an automated process and does not fall under Sun's document control process.
3. Items without balloons are shipped loose.



6	811-001-006			PIN	1
5	700-002			SEAL PLATE	1
4	500-001-012			O-RING	4
3	850-004-250			KOENIG EXPANDER PLUGS	2
2	CXDA-XCN			CHECK VALVE	2
1	153-078		6061-T6 ALUMINUM	BODY	1
ITEM	PART NO.	SETTING	MATERIAL	PART NAME	QTY

MODEL		EB9		ALL DIMENSIONS IN INCH VIEWS ARE THIRD ANGLE		FIRST ANGLE		THIRD ANGLE			
DESCRIPTION		T-11A Sandwich ISO 03 (See Technical Data for Body Features)		DATE	Aug-23-23	SCALE	0.849	DWG SIZE	C	SHEET	1