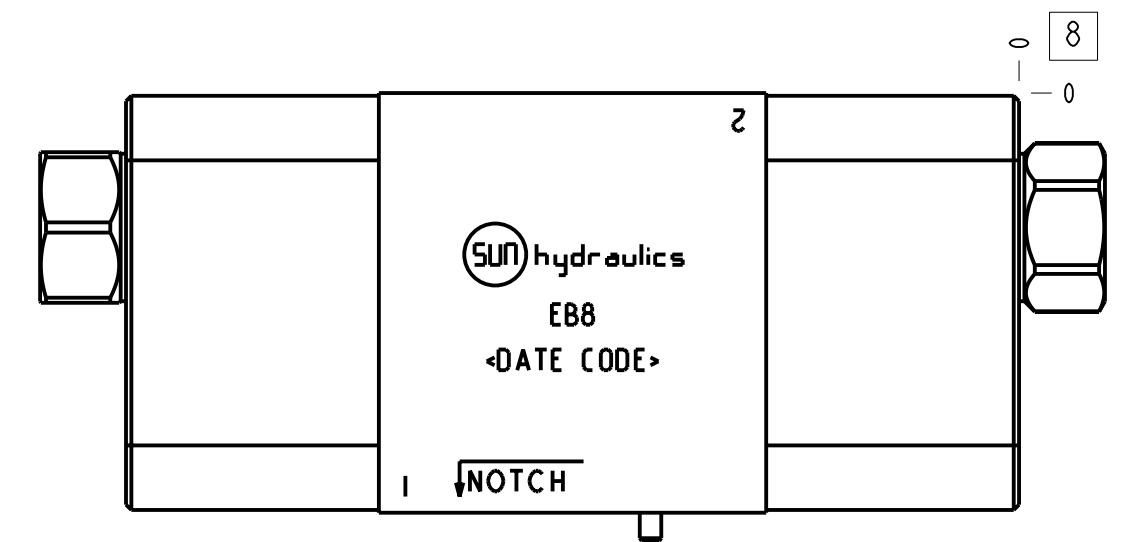
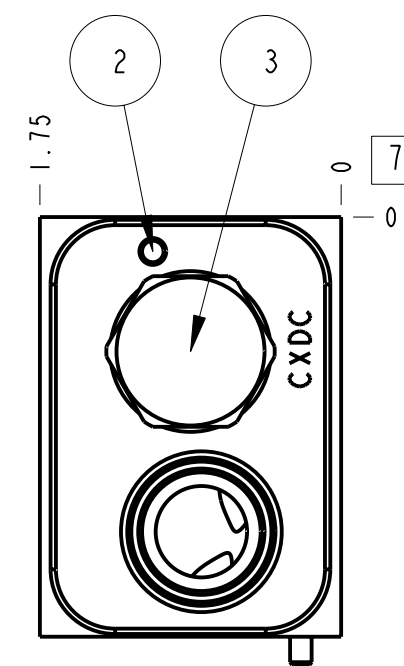
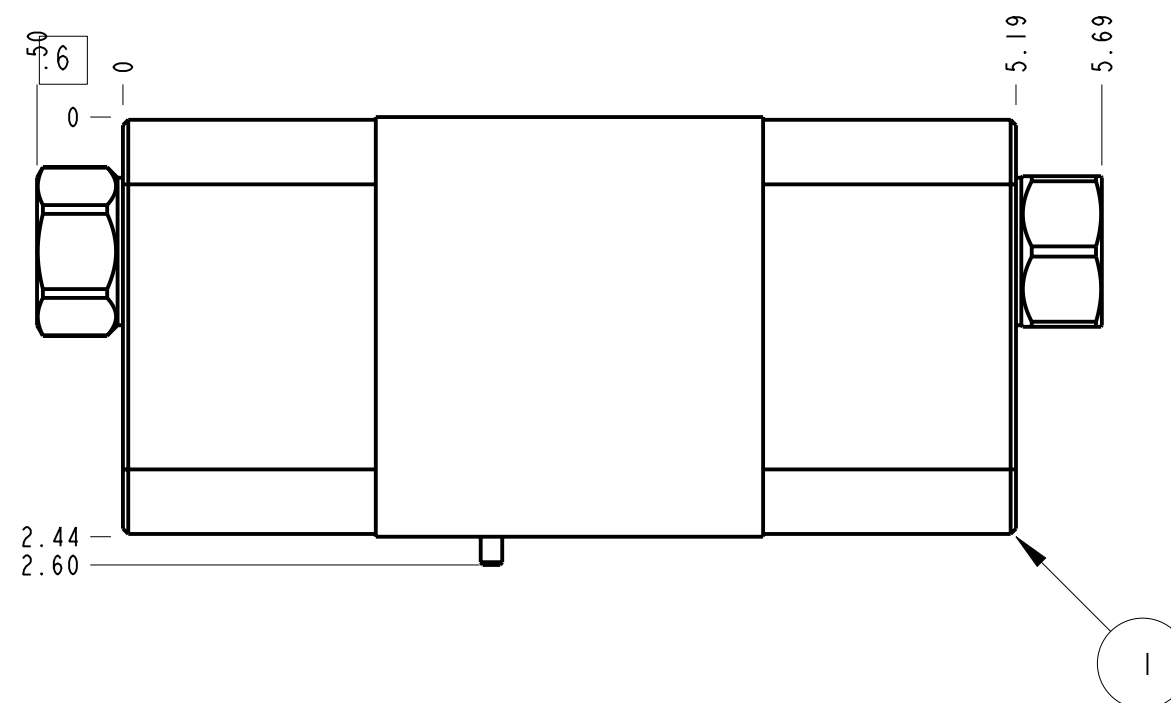
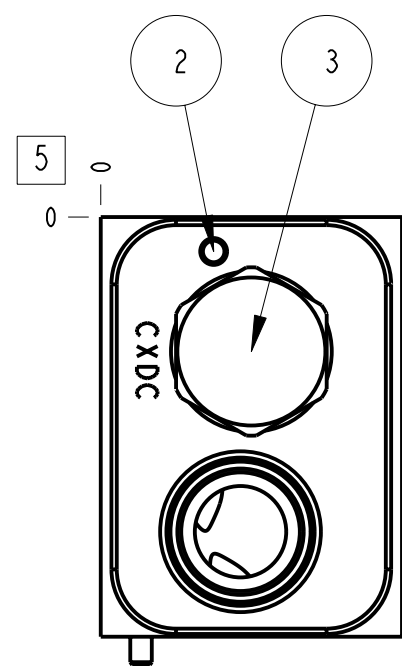
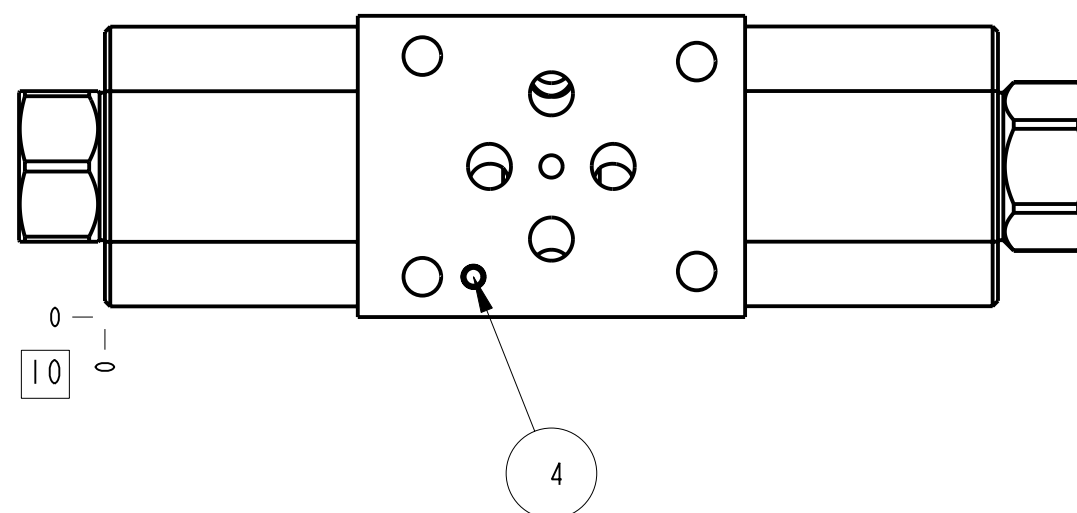


Technical Data	U.S. Units	Metric Units
Cavity	T-11A	
Body Features	Cushion lock	
Body Type	Sandwich	
Interface	ISO 03	
Open Cavity Quantity	2	
Stack Height	2.49 in.	63 mm
Weight	2.114 lb.	0,959 kg.
Seal Plate Included (see notes)	Yes	
Includes integral cartridge(s)	Yes (see Included Components)	



Notes

- Stack height value in technical data table includes seal retainer plate.
- Important: Carefully consider the maximum system pressure. The pressure rating of the manifold is dependent on the manifold material, with the port type/size a secondary consideration. Manifolds constructed of aluminum are not rated for pressures higher than 3000 psi (210 bar), regardless of the port type/size specified.
- This drawing is for reference only. It is generated by an automated process and does not fall under Sun's document control process.
- Items without balloons are shipped loose.



ITEM	PART NO.	SETTING	MATERIAL	PART NAME	QTY
6	700-002			SEAL PLATE	1
5	500-001-012			O-RING	4
4	811-001-006		LOW CARBON STEEL	PIN	1
3	CXDC-XCN			CHECK VALVE	2
2	850-004-156			KOENIG EXPANDER PLUGS	2
1	151-591		6061-T6 ALUMINUM	BODY	1

MODEL: EBB

DESCRIPTION: T-11A Sandwich ISO 03 Cushion lock

DATE: Oct-14-24

SCALE: 0.897

DWG SIZE: C

SHEET: 1

ALL DIMENSIONS IN INCH VIEWS ARE THIRD ANGLE

FIRST ANGLE

THIRD ANGLE