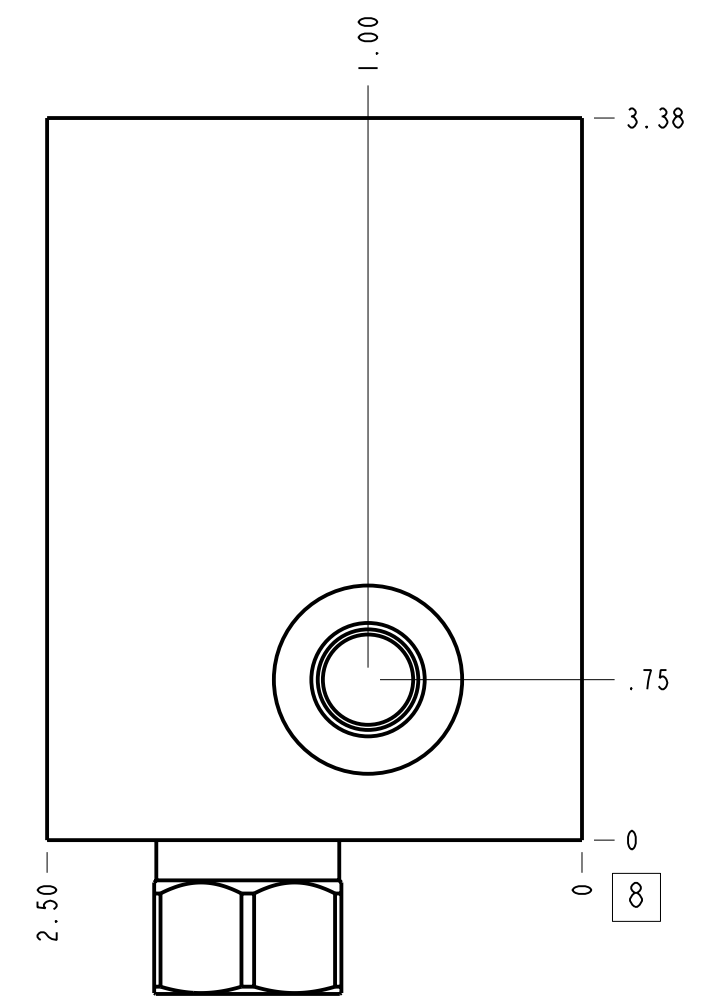
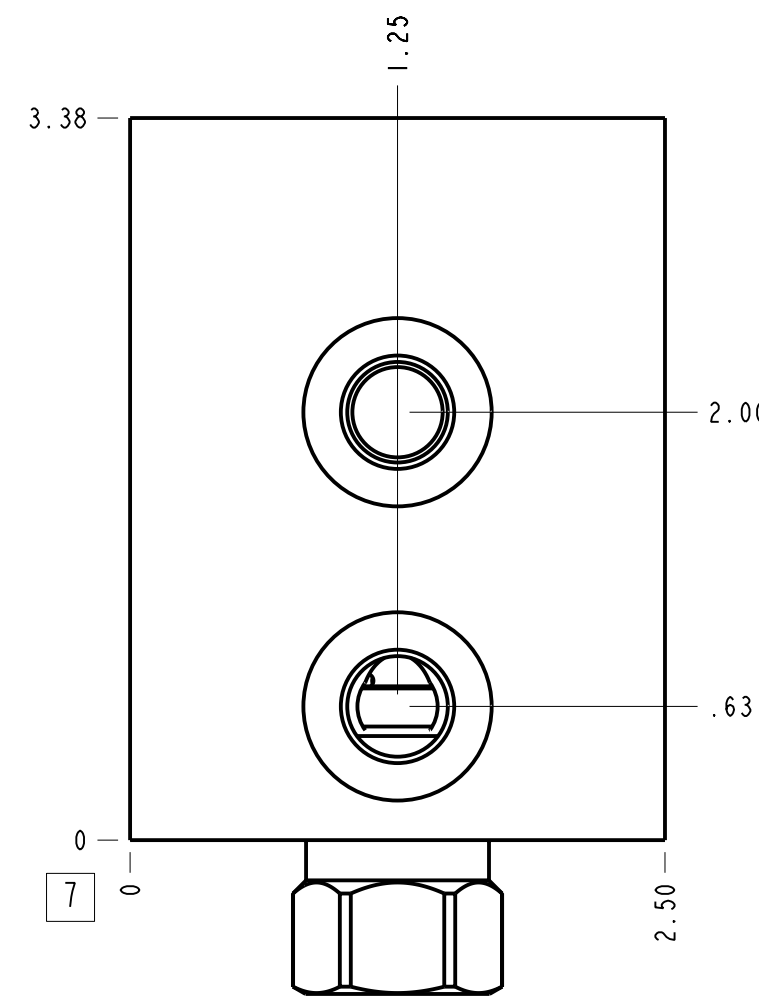
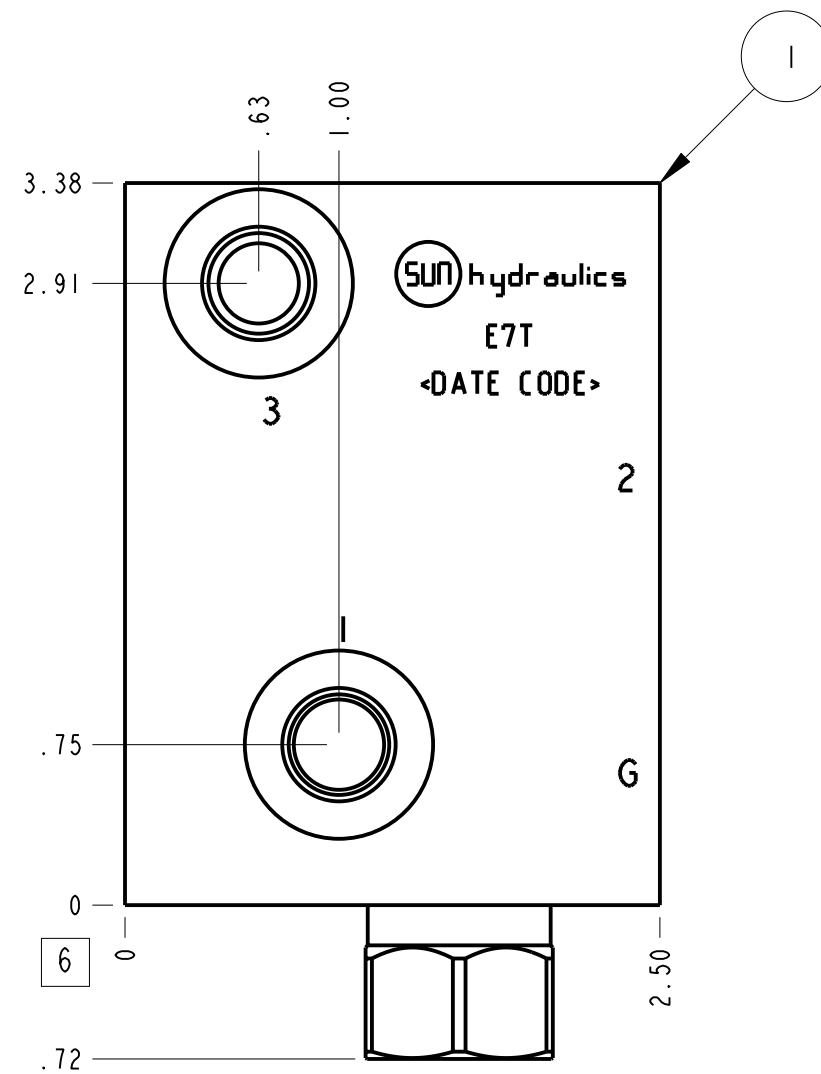
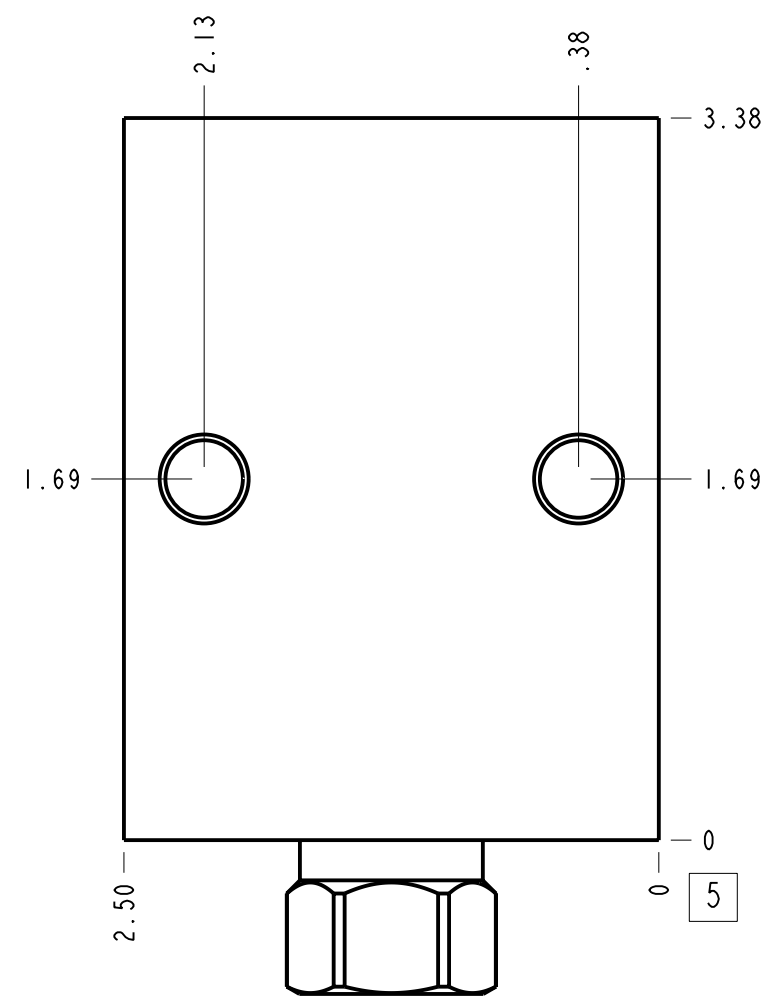
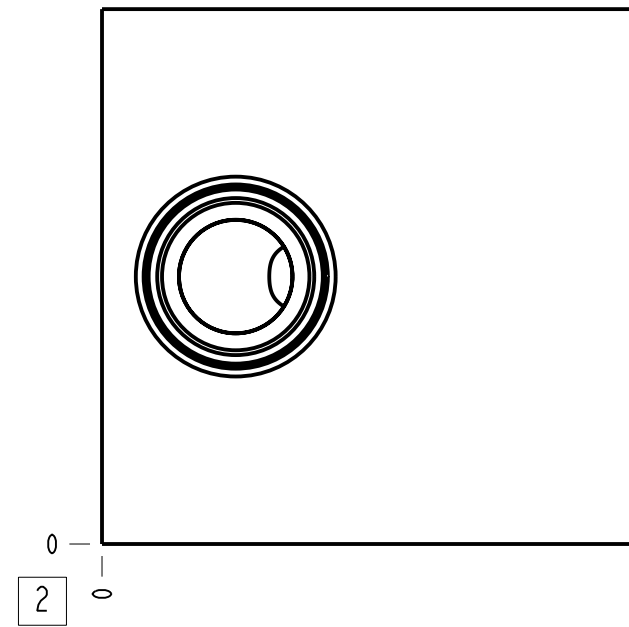
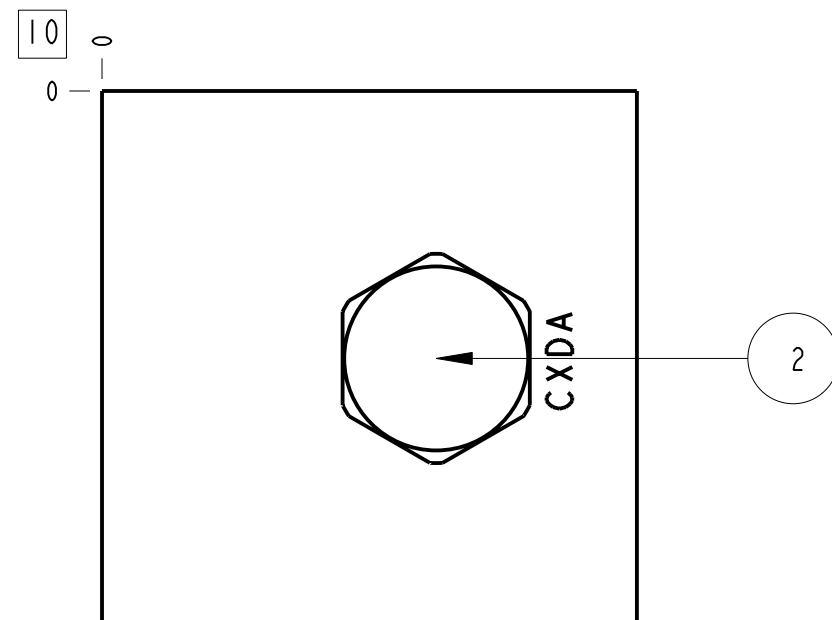


Technical Data	U.S. Units	Metric Units
Cavity	T-11A	
Body Features	Through port 1 with reverse flow check	
Body Type	Line mount	
Interface	None	
Open Cavity Quantity	1	
Weight	2.013 lb.	0,913 kg.
Mounting Hole Thread	M10x1.5 - 6H	
Mounting Hole Depth	.62 in.	15,7 mm
Mounting Hole Quantity	2	
Includes integral cartridge(s)	Yes (see Included Components)	



Notes

1. Important: Carefully consider the maximum system pressure. The pressure rating of the manifold is dependent on the manifold material, with the port type/size a secondary consideration. Manifolds constructed of aluminum are not rated for pressures higher than 3000 psi (210 bar), regardless of the port type/size specified.
2. This drawing is for reference only. It is generated by an automated process and does not fall under Sun's document control process.



Port Headings		
Product	Port	Size
E7T	Ports 1 & 2	1/4" BSPP
E7T	Port 3	1/4" BSPP
E7T	Gage Port	1/4" BSPP

2	CXDA-XCN		CHECK VALVE	1		
1	151-090-007	6061-T6 ALUMINUM	BODY	1		
ITEM	PART NO.	SETTING	MATERIAL	PART NAME	QTY	
	MODEL		E7T	ALL DIMENSIONS IN INCH VIEWS ARE THIRD ANGLE		
DESCRIPTION		T-11A Line mount Through port 1 with reverse flow check	DATE	SCALE	DWG SIZE	SHEET
		Aug-06-24	1.114	C	1	

