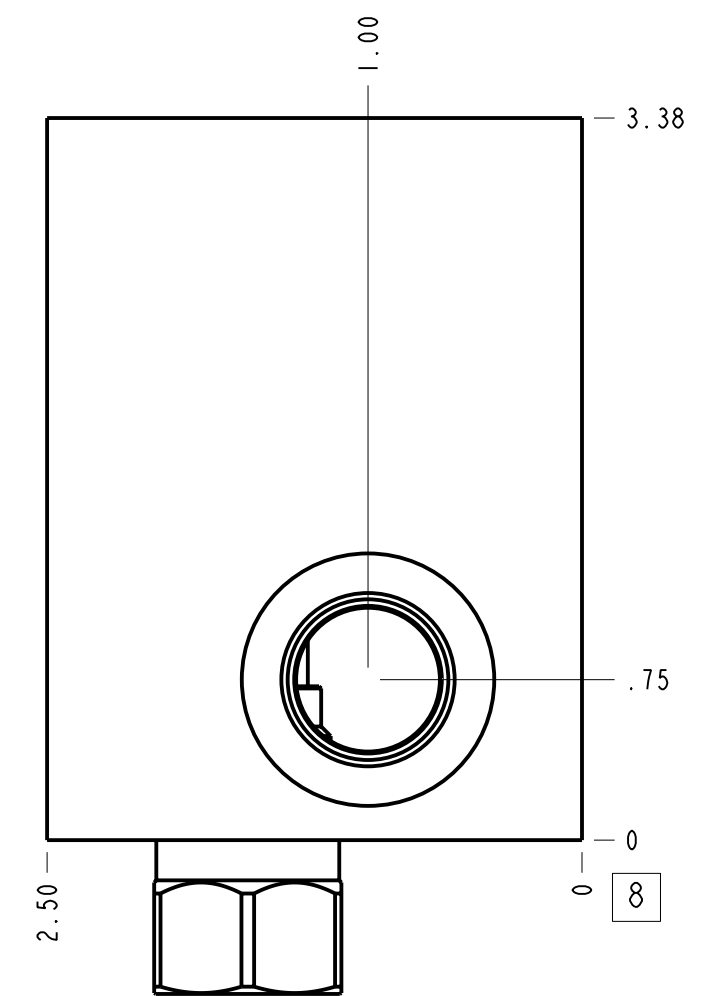
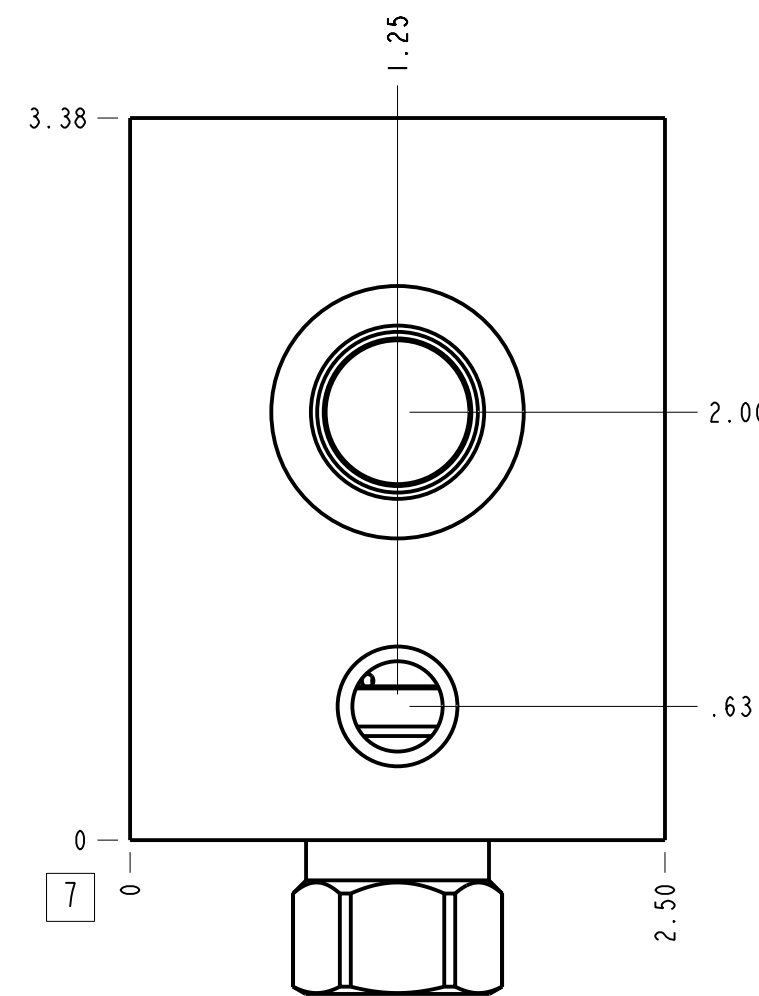
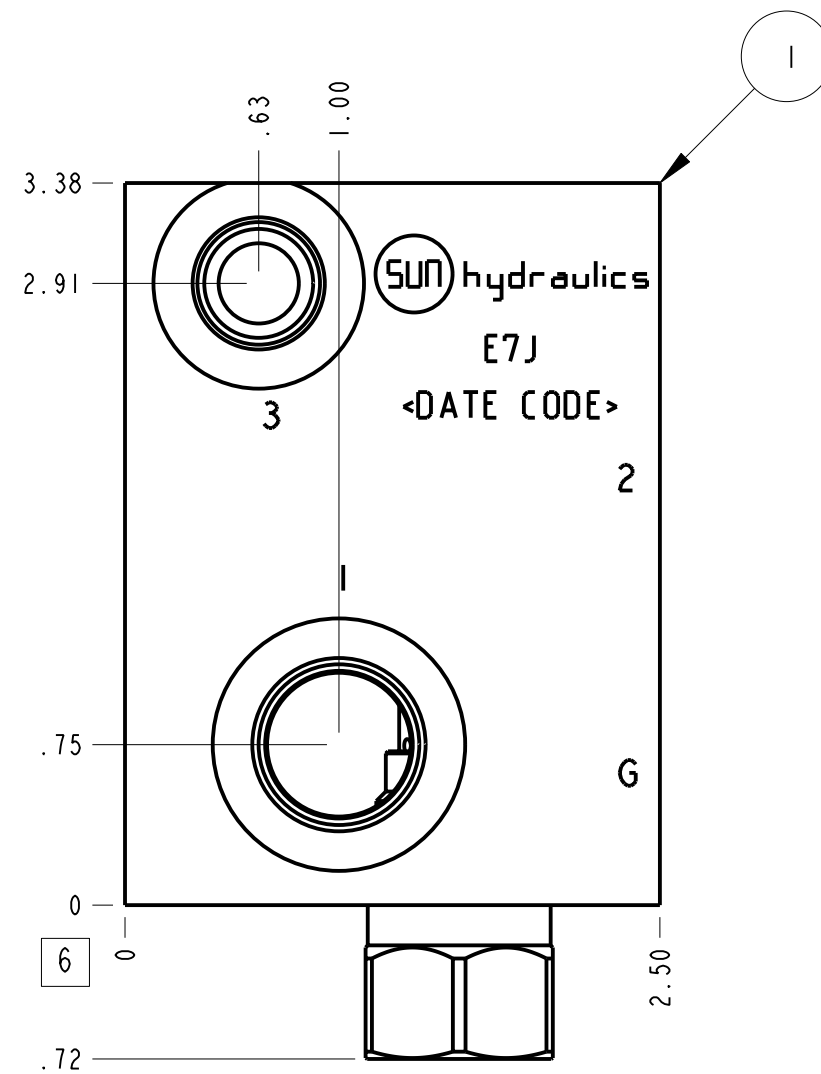
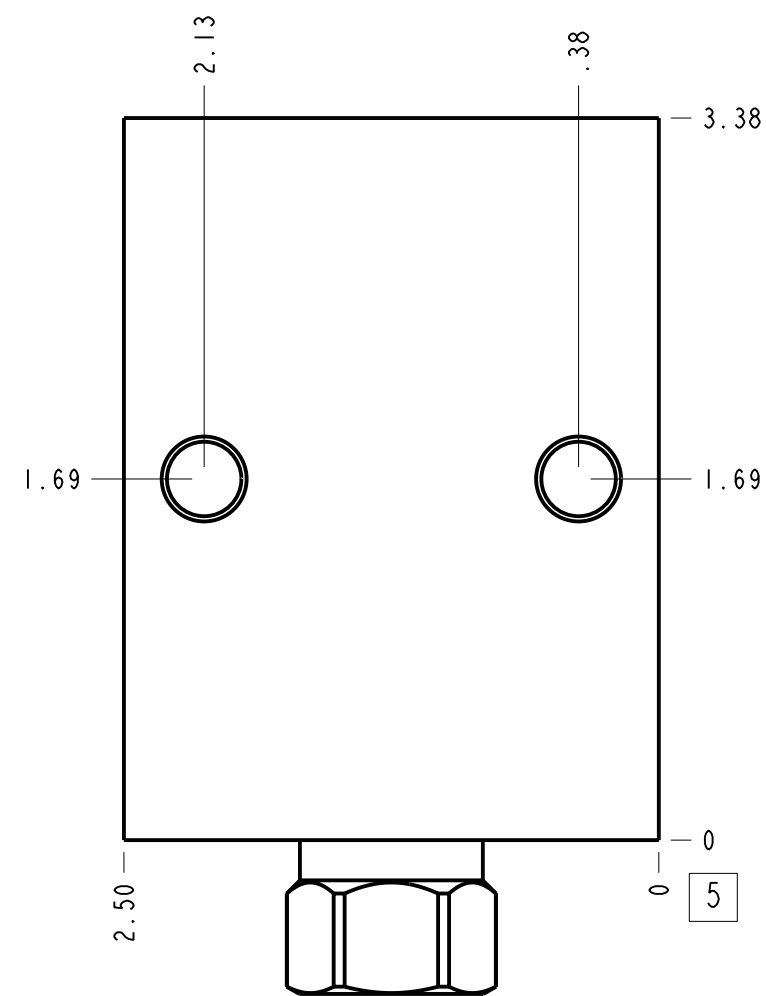
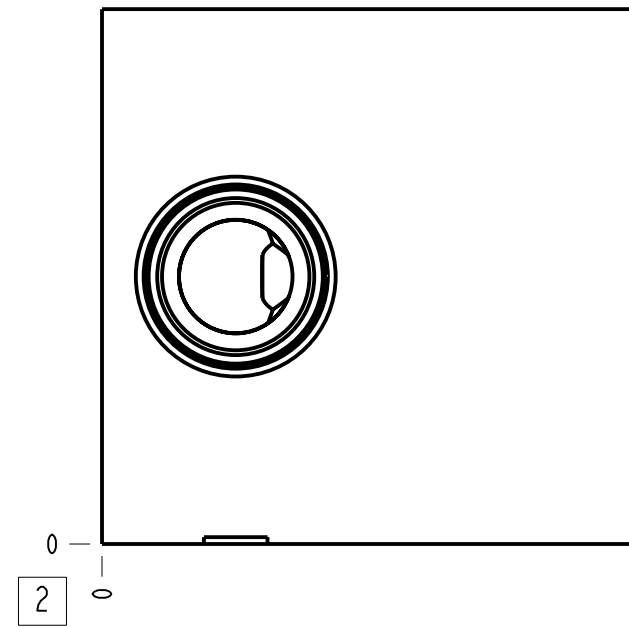
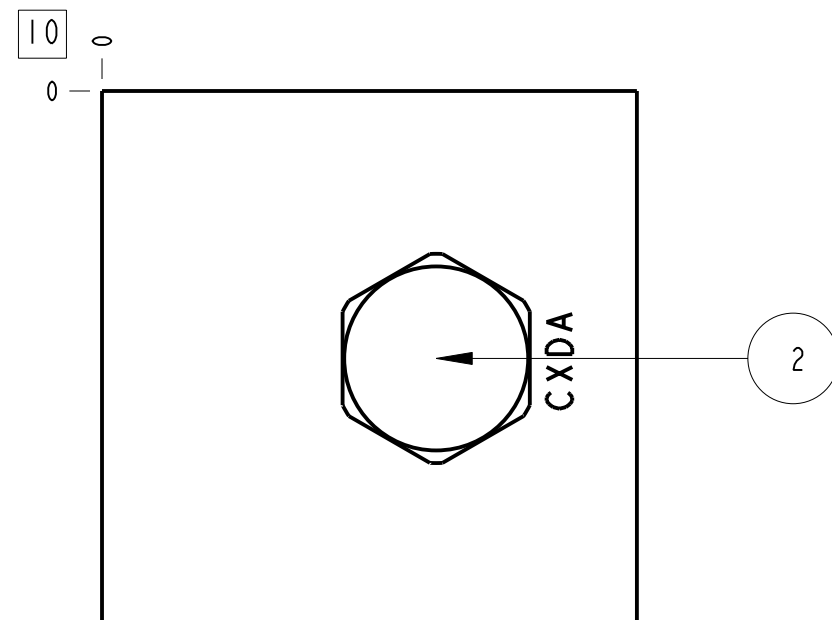


Technical Data	U.S. Units	Metric Units
Cavity	T-11A	
Body Features	Through port 1 with reverse flow check	
Body Type	Line mount	
Interface	None	
Open Cavity Quantity	1	
Weight	1.934 lb.	0,877 kg.
Mounting Hole Thread	.375-16 UNC - 2B in.	
Mounting Hole Depth	.62 in.	15,7 mm
Mounting Hole Quantity	2	
Includes integral cartridge(s)	Yes (see Included Components)	



**Notes**

1. Important: Carefully consider the maximum system pressure. The pressure rating of the manifold is dependent on the manifold material, with the port type/size a secondary consideration. Manifolds constructed of aluminum are not rated for pressures higher than 3000 psi (210 bar), regardless of the port type/size specified.
2. This drawing is for reference only. It is generated by an automated process and does not fall under Sun's document control process.



Port Headings		
Product	Port	Size
E7J	Ports 1 & 2	SAE 8
E7J	Port 3	SAE 6
E7J	Gage Port	1/4" NPTF

2	CXDA-XCN		CHECK VALVE	1		
1	151-090-005	6061-T6 ALUMINUM	BODY	1		
ITEM	PART NO.	SETTING	MATERIAL	PART NAME	QTY	
	MODEL		E7J	ALL DIMENSIONS IN INCH VIEWS ARE THIRD ANGLE	FIRST ANGLE THIRD ANGLE	
DESCRIPTION		T-11A Line mount Through port 1 with reverse flow check	DATE	SCALE	DWG SIZE	SHEET
		Jan-04-24	1.114	C	1	

