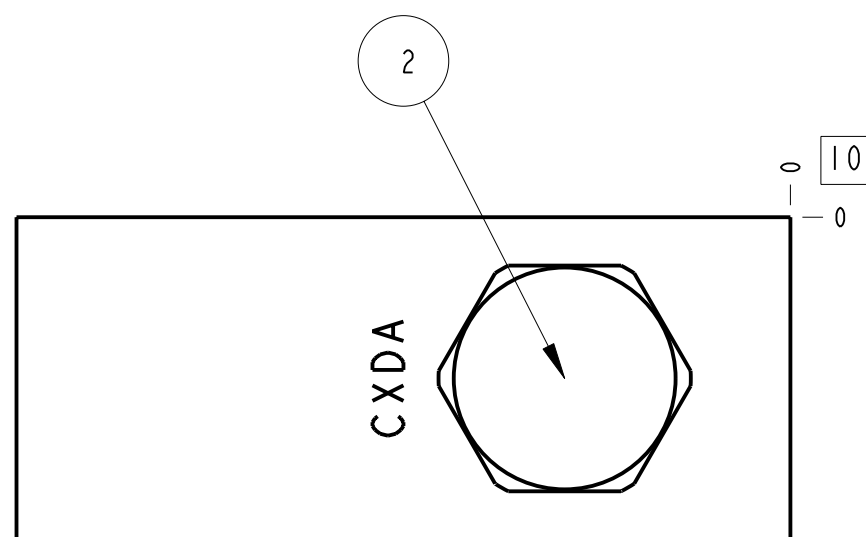
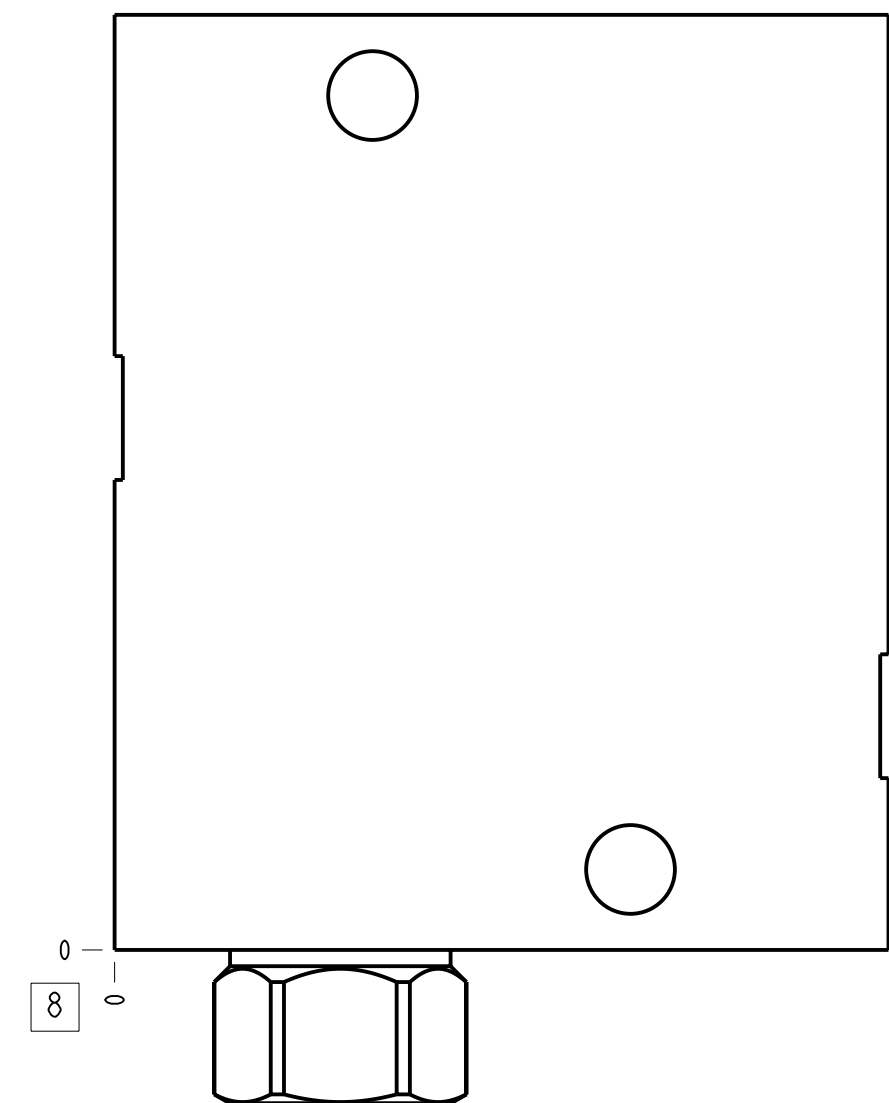
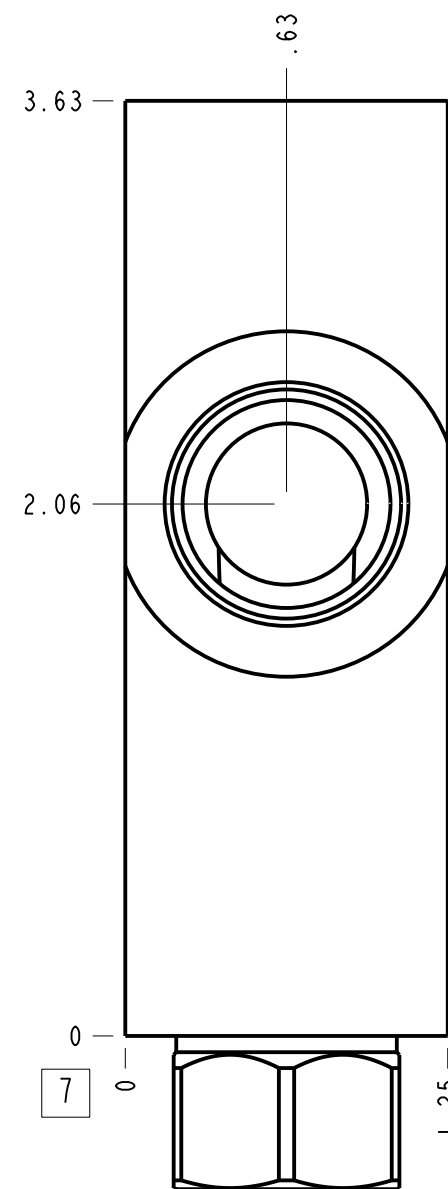
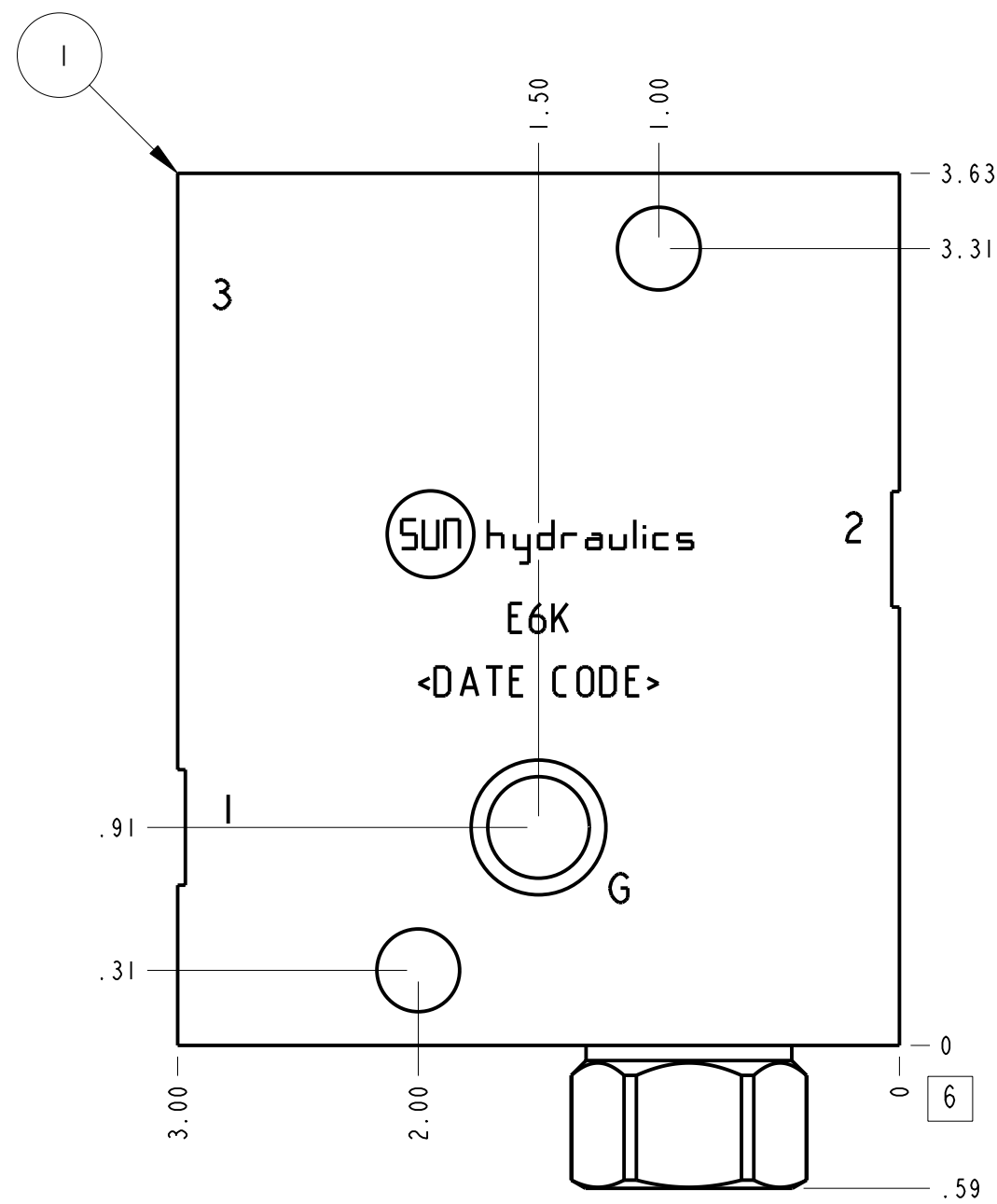
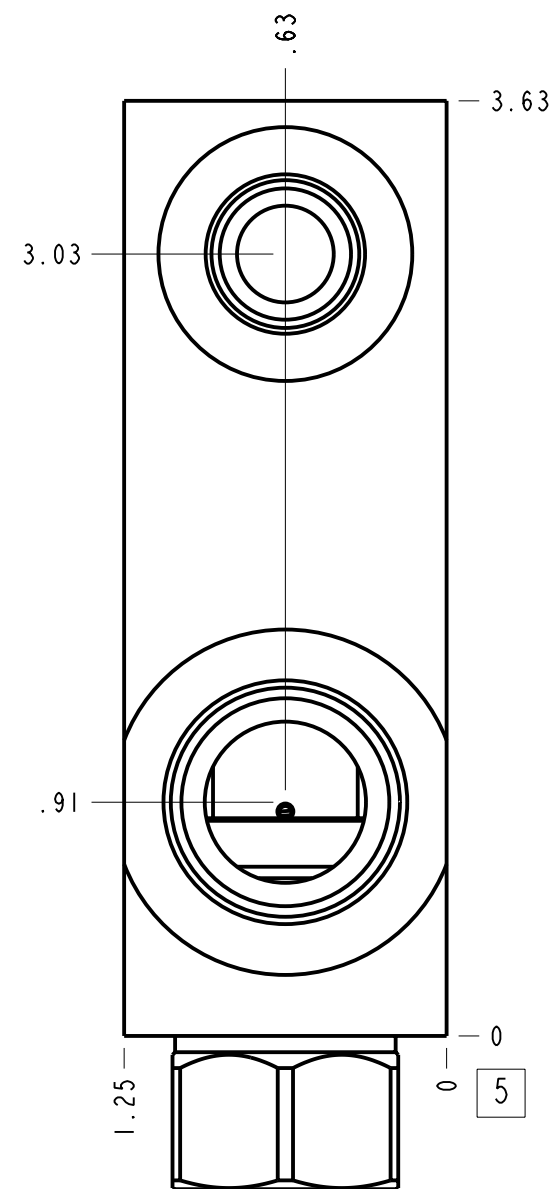
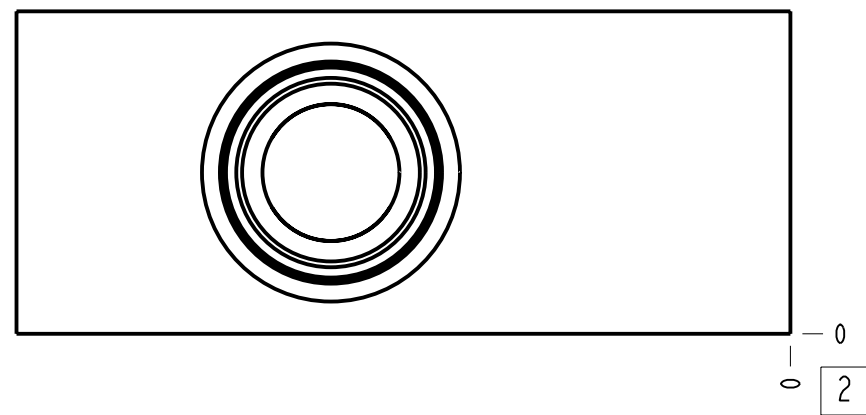


Technical Data	U.S. Units	Metric Units
Cavity	T-11A	
Body Features	Ninety degree with reverse flow check - sequence	
Body Type	Line mount	
Interface	None	
Open Cavity Quantity	1	
Weight	1.206 lb.	0,547 kg.
Check Cracking Pressure	30 psi	2 bar
Mounting Hole Diameter	.34 in.	8.6 mm
Mounting Hole Depth	Through	
Mounting Hole Quantity	2	
Includes integral cartridge(s)	Yes (see Included Components)	



Notes

- Important: Carefully consider the maximum system pressure. The pressure rating of the manifold is dependent on the manifold material, with the port type/size a secondary consideration. Manifolds constructed of aluminum are not rated for pressures higher than 3000 psi (210 bar), regardless of the port type/size specified.
- This drawing is for reference only. It is generated by an automated process and does not fall under Sun's document control process.

Port Headings		
Product	Port	Size
E6K	Ports 1 & 2	SAE 10
E6K	Port 3	SAE 6
E6K	Gage Port	1/4" NPTF

2	CXDA-XCN		CHECK VALVE	1		
1	151-019-006	6061-T6 ALUMINUM	BODY	1		
ITEM	PART NO.	SETTING	MATERIAL	PART NAME	QTY	
	MODEL		E6K	ALL DIMENSIONS IN INCH VIEWS ARE THIRD ANGLE	FIRST ANGLE THIRD ANGLE	
DESCRIPTION		T-11A Line mount (See Technical Data for Body Features)	DATE	SCALE	DWG SIZE	SHEET
		Sep-12-23	1.344	C	1	

