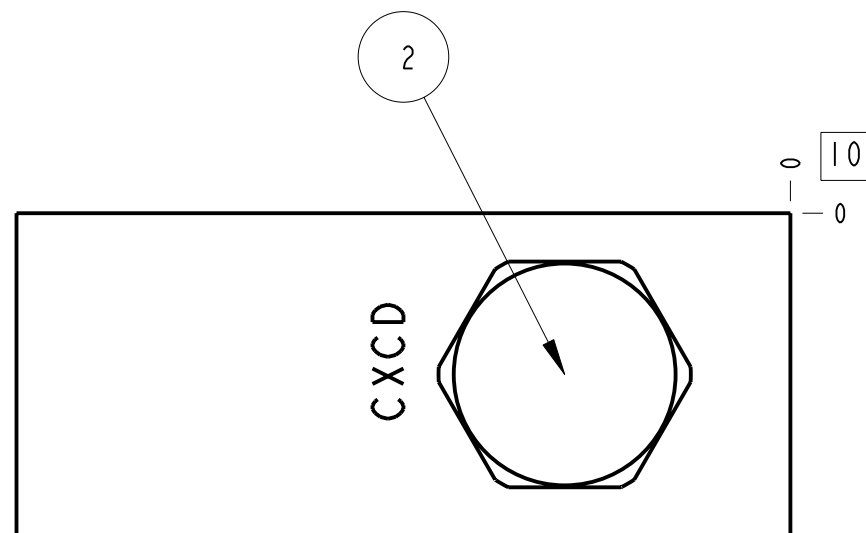
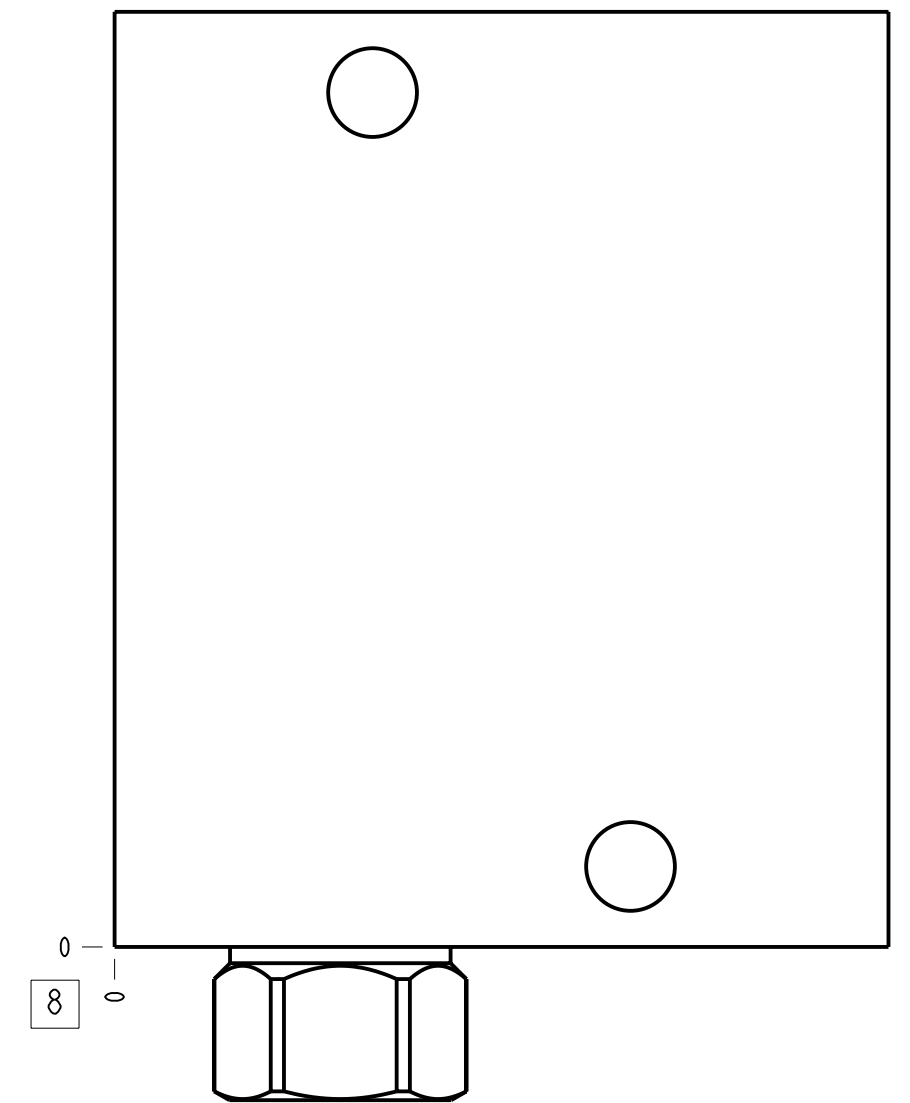
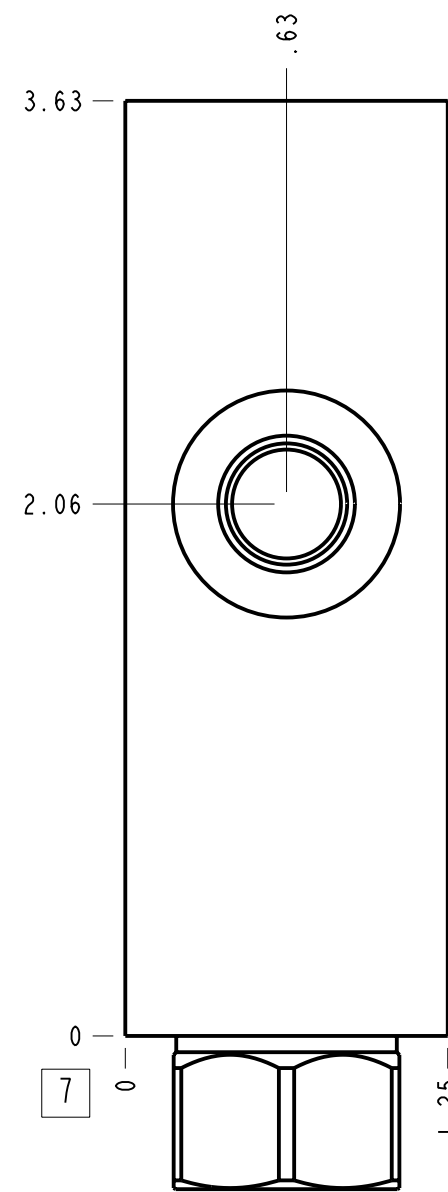
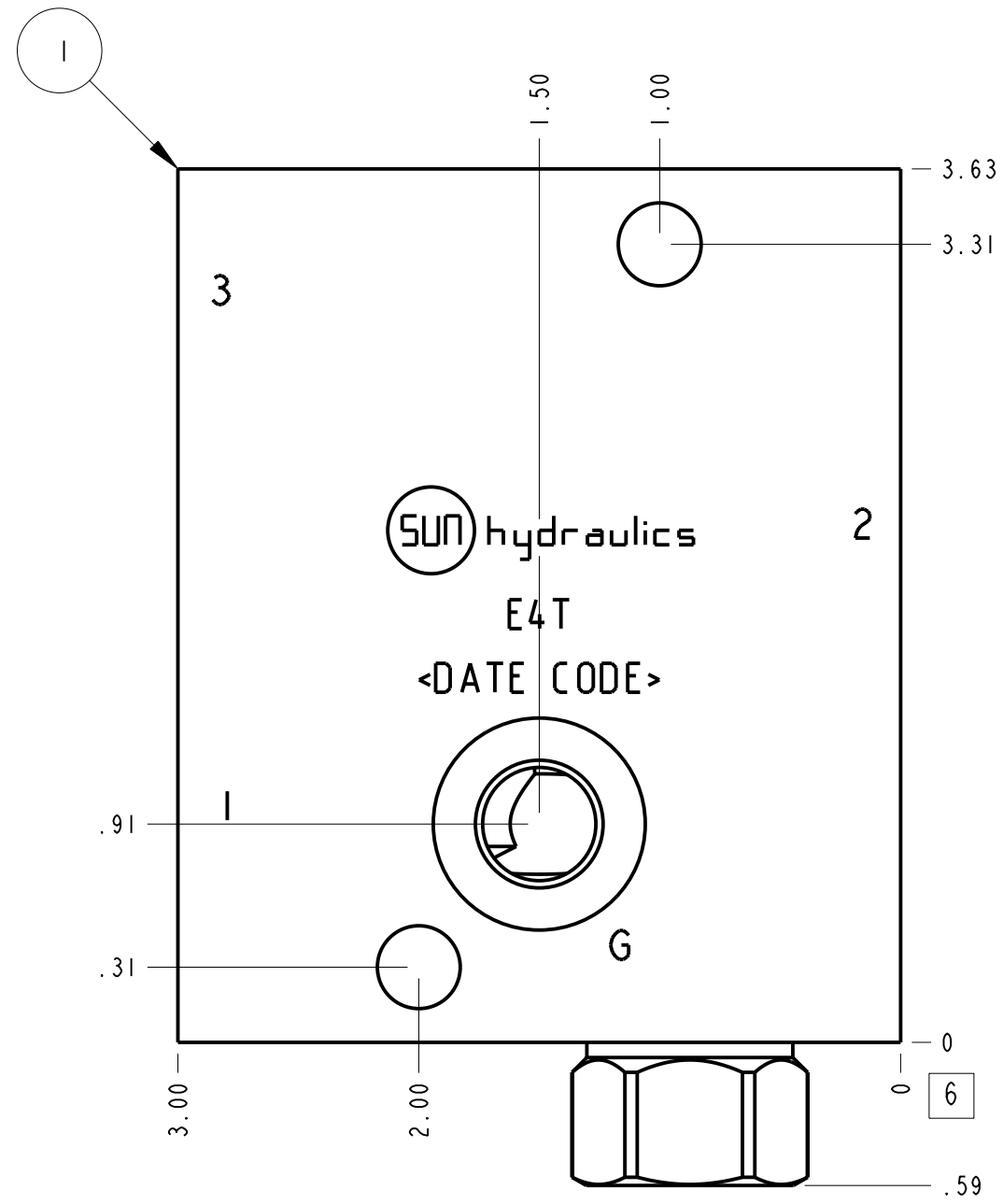
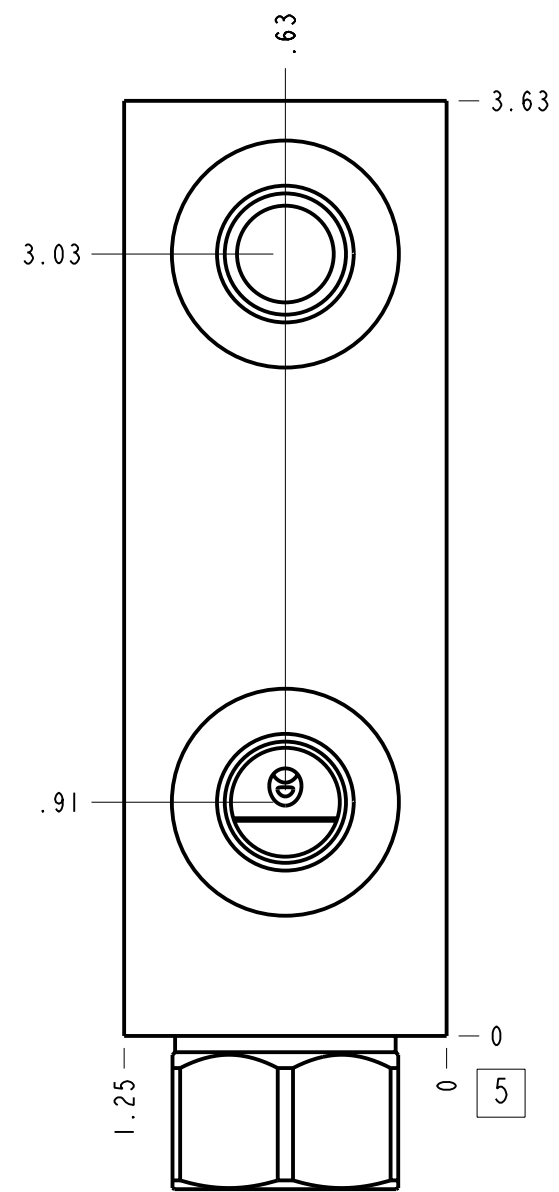
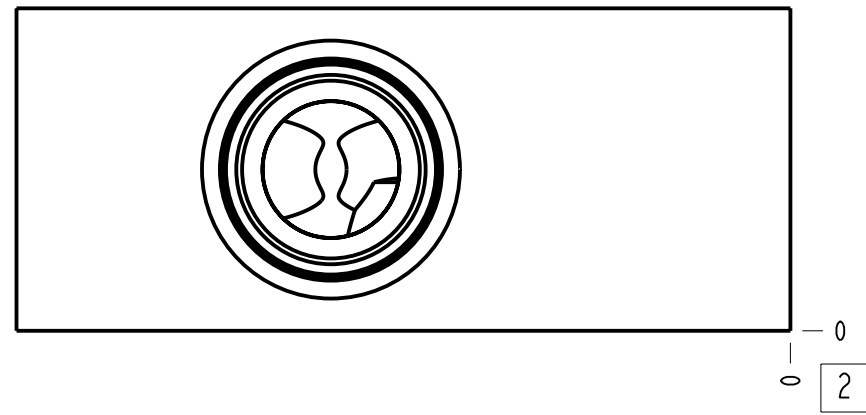


Technical Data	U.S. Units	Metric Units
Cavity	T-11A	
Body Features	Ninety degree with reverse flow check - reducing	
Body Type	Line mount	
Interface	None	
Open Cavity Quantity	1	
Weight	1.258 lb.	0,570 kg.
Mounting Hole Diameter	.34 in.	8.6 mm
Mounting Hole Depth	Through	
Mounting Hole Quantity	2	
Includes integral cartridge(s)	Yes (see Included Components)	



Notes

1. Important: Carefully consider the maximum system pressure. The pressure rating of the manifold is dependent on the manifold material, with the port type/size a secondary consideration. Manifolds constructed of aluminum are not rated for pressures higher than 3000 psi (210 bar), regardless of the port type/size specified.
2. This drawing is for reference only. It is generated by an automated process and does not fall under Sun's document control process.

Port Headings		
Product	Port	Size
E4T	Ports 1 & 2	1/4" BSPP
E4T	Port 3	1/4" BSPP
E4T	Gage Port	1/4" BSPP

2	CXCD-XCN		CHECK VALVE	1	
1	151-019-007	6061-T6 ALUMINUM	BODY	1	
ITEM	PART NO.	SETTING	MATERIAL	PART NAME	QTY

MODEL: E4T

DESCRIPTION: T-11A Line mount (See Technical Data for Body Features)

DATE: Jan-11-24

SCALE: 1.344

DWG SIZE: C

SHEET: 1

ALL DIMENSIONS IN INCH VIEWS ARE THIRD ANGLE

FIRST ANGLE THIRDS ANGLE