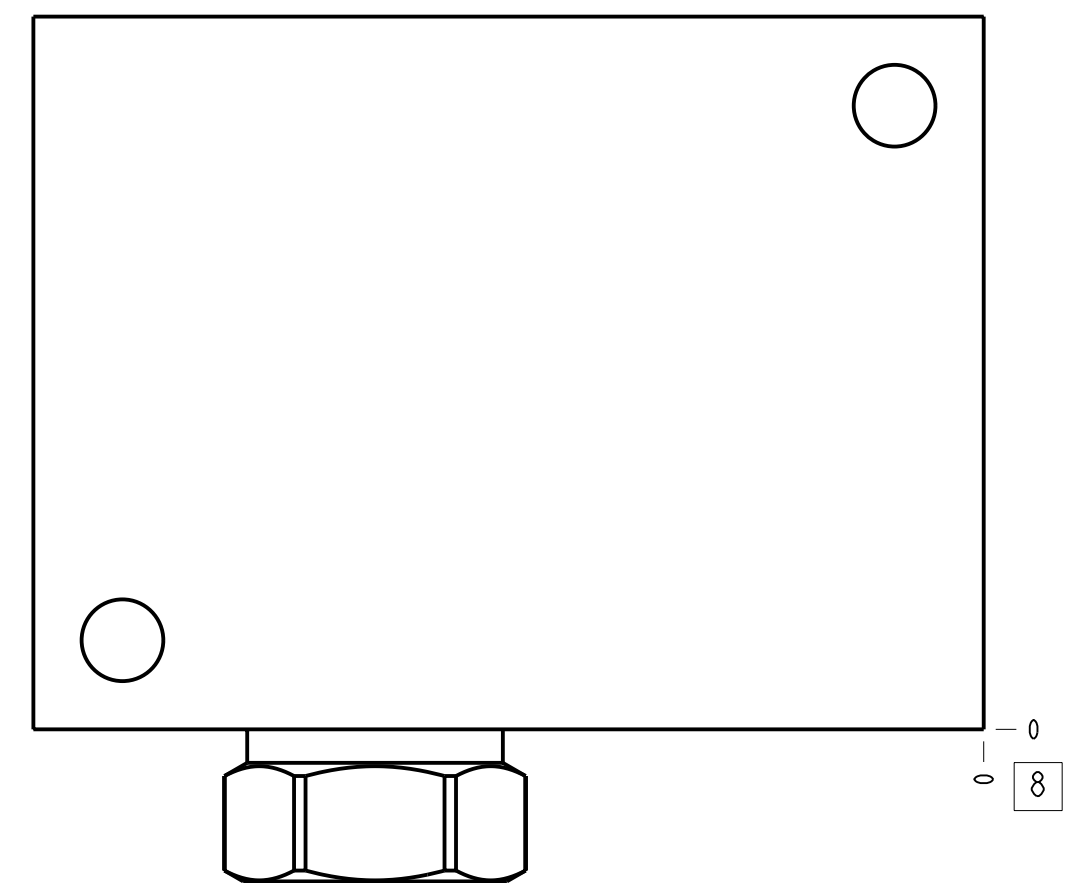
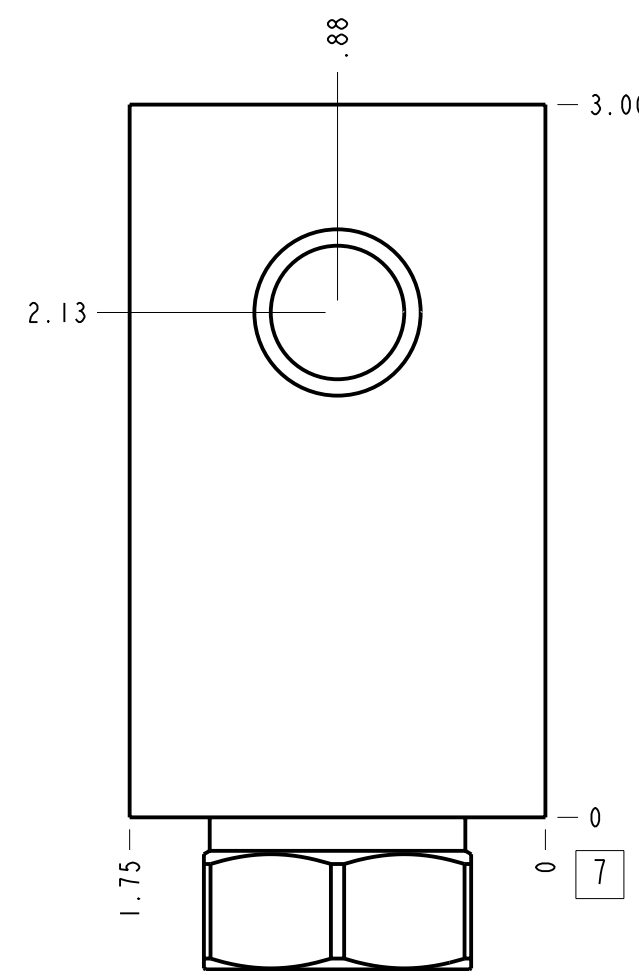
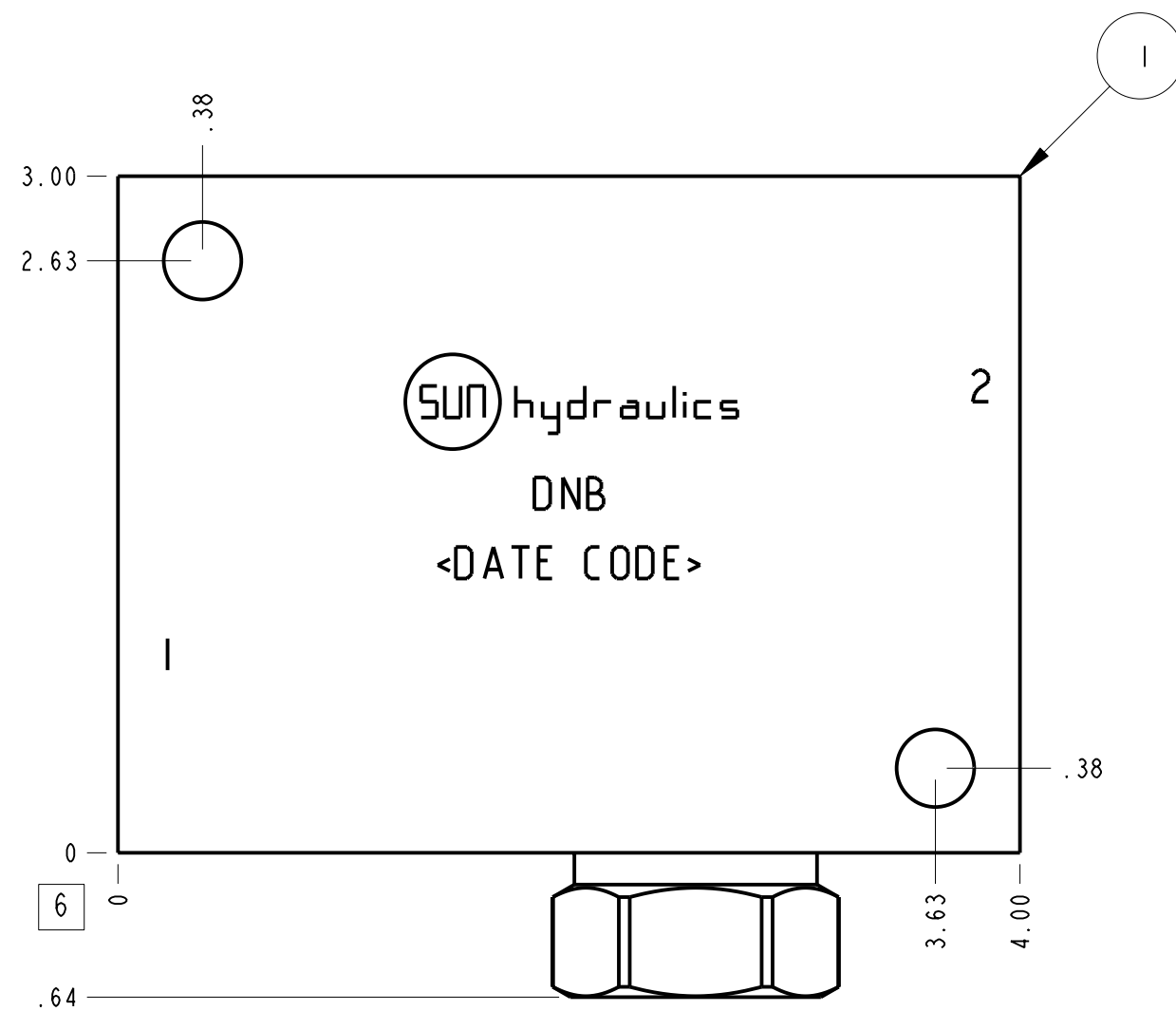
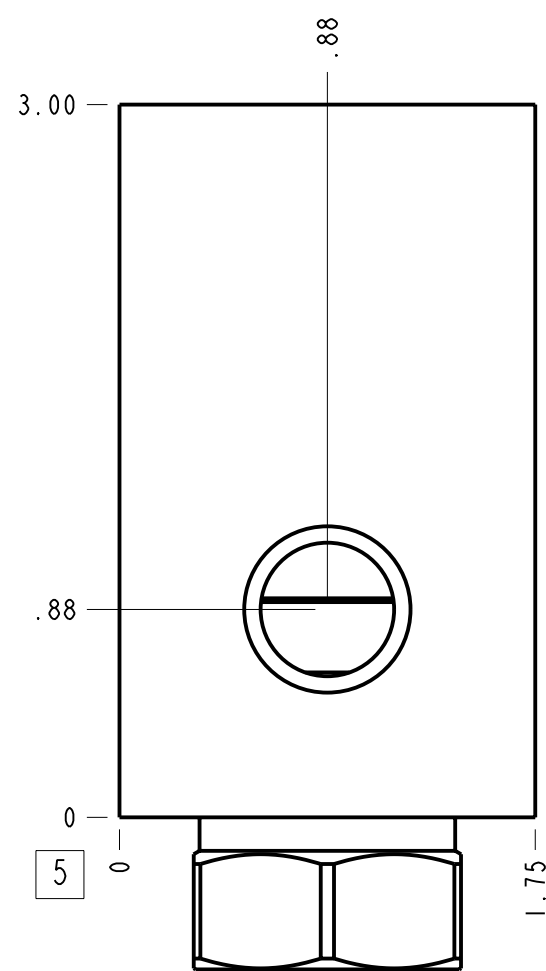
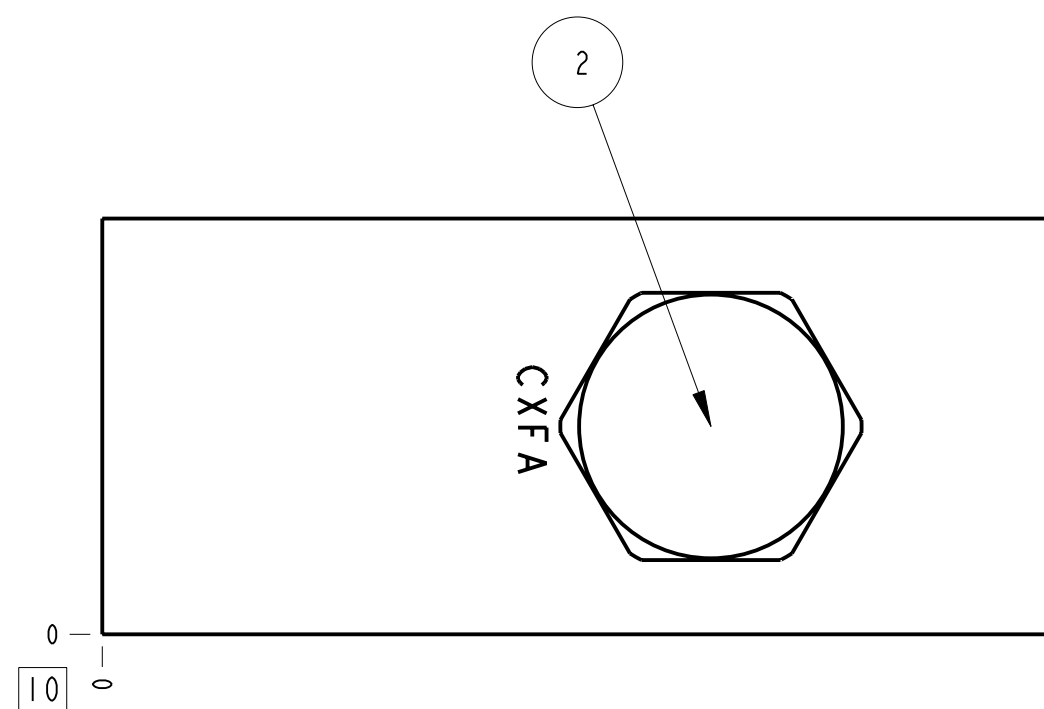


Technical Data	U.S. Units	Metric Units
Cavity	T-5A	
Body Features	Ninety degree with reverse flow check	
Body Type	Line mount	
Interface	None	
Open Cavity Quantity	1	
Weight	2.080 lb.	0.943 kg.
Mounting Hole Diameter	.34 in.	8.6 mm
Mounting Hole Depth	Through	
Mounting Hole Quantity	2	
Includes integral cartridge(s)	Yes (see Included Components)	



Notes

- Important: Carefully consider the maximum system pressure. The pressure rating of the manifold is dependent on the manifold material, with the port type/size a secondary consideration. Manifolds constructed of aluminum are not rated for pressures higher than 3000 psi (210 bar), regardless of the port type/size specified.
- This drawing is for reference only. It is generated by an automated process and does not fall under Sun's document control process.



Port Headings		
Product	Port	Size
DNB	All Ports	3/8" NPTF

2	CXFA-XCN		CHECK VALVE	1		
1	151-669-001	6061-T6 ALUMINUM	BODY	1		
ITEM	PART NO.	SETTING	MATERIAL	PART NAME	QTY	
	MODEL		DNB	ALL DIMENSIONS IN INCH VIEWS ARE THIRD ANGLE		
DESCRIPTION		T-5A Line mount Ninety degree with reverse flow check	DATE	SCALE	DWG SIZE	SHEET
		Nov-11-24	1.237	C	1	

