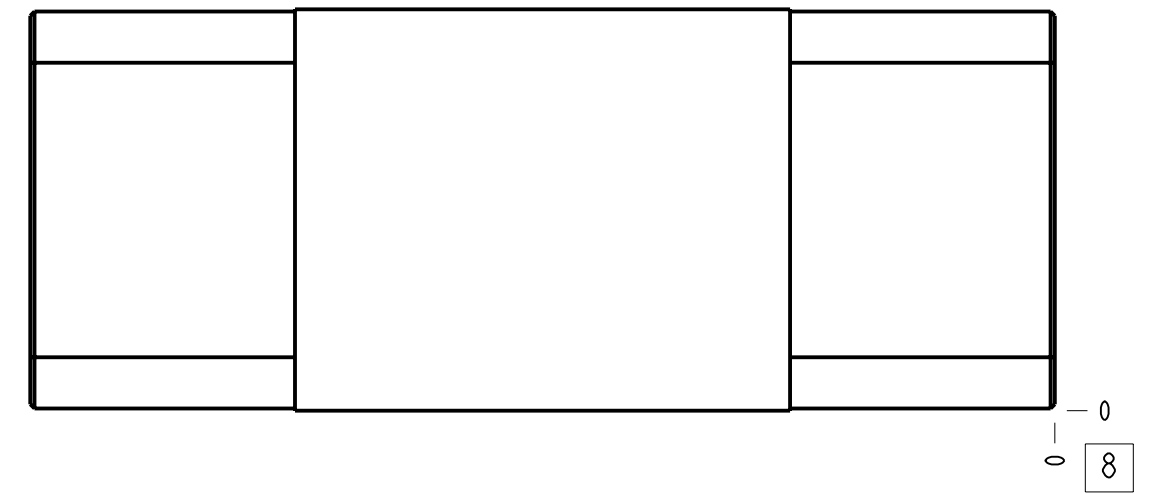
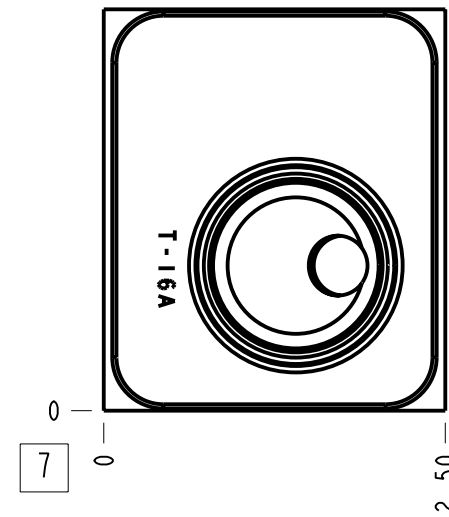
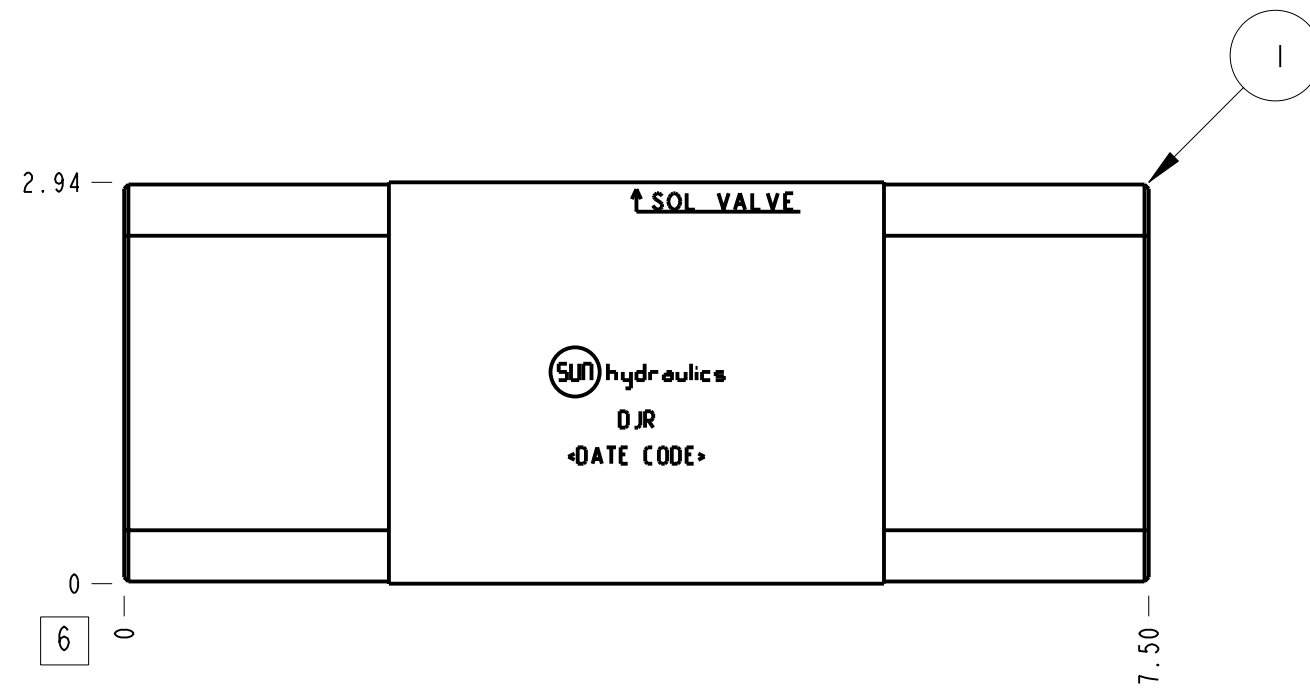
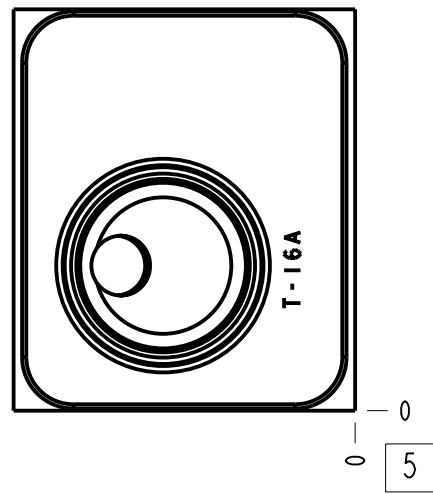


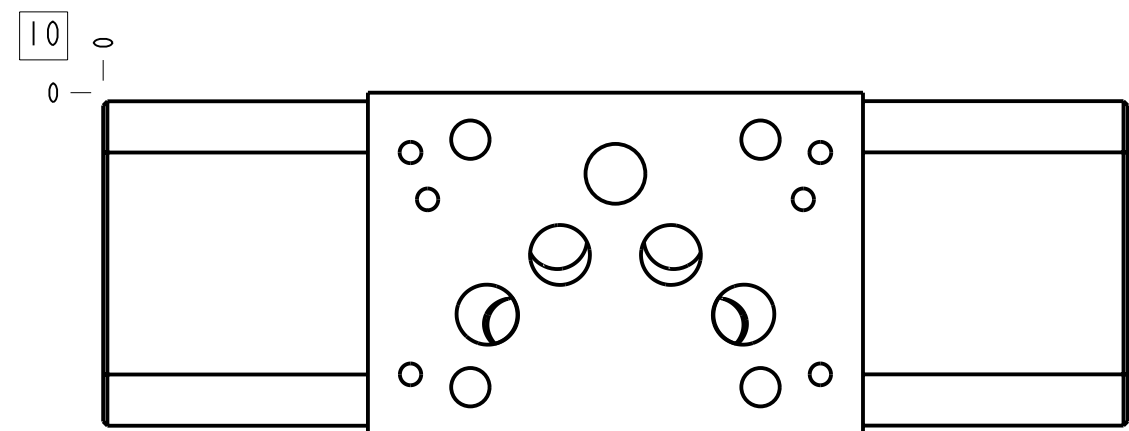
Technical Data	U.S. Units	Metric Units
Cavity	T-16A	
Body Features	T to A and B	
Body Type	Sandwich	
Interface	ISO 05 - X&Y	
Open Cavity Quantity	2	
Stack Height	2.99 in.	76 mm
Weight	4.056 lb.	1,840 kg.
Seal Plate Included (see notes)	No	

Related Accessories	
Part Number	Description
990-120-009	ISO 05 X and Y US sandwich manifold retainer and buna-N seal kit
990-120-010	ISO 05 X and Y US sandwich manifold retainer and Viton seal kit
990-120-011	ISO 05 X and Y Europe sandwich manifold retainer and Viton seal kit
990-120-012	ISO 05 X and Y Europe sandwich manifold retainer and buna-N seal kit



Notes

1. Stack height value in technical data table includes seal retainer plate.
2. This installation requires a retainer and seal kit which are purchased separately. See "Related Accessories" section.
3. Important: Carefully consider the maximum system pressure. The pressure rating of the manifold is dependent on the manifold material, with the port type/size a secondary consideration. Manifolds constructed of aluminum are not rated for pressures higher than 3000 psi (210 bar), regardless of the port type/size specified.
4. This drawing is for reference only. It is generated by an automated process and does not fall under Sun's document control process.



I	153-155		6061-T6 ALUMINUM	BODY	I
I T E M	PART NO.	SETTING	MATERIAL	PART NAME	Q T Y
MODEL			ALL DIMENSIONS IN INCH VIEWS ARE THIRD ANGLE		FIRST ANGLE THIRD ANGLE
DESCRIPTION			DATE	SCALE	DWG SIZE SHEET
T-16A Sandwich ISO 05 - X&Y T to A and B			May-21-24	0.712	C I

