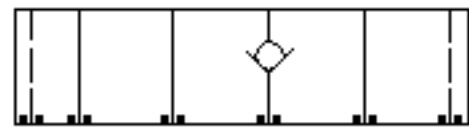
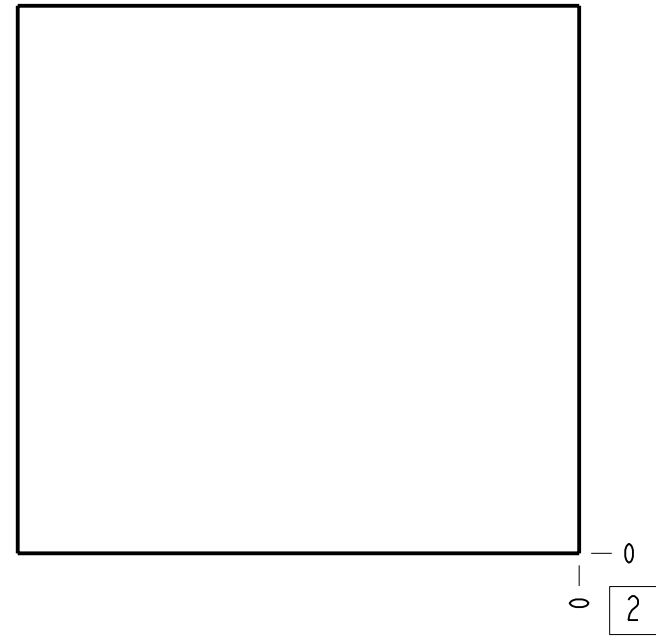
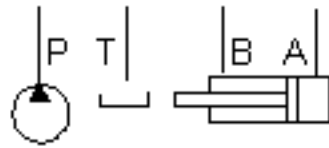


Check, On A, Free Flow Out of Valve

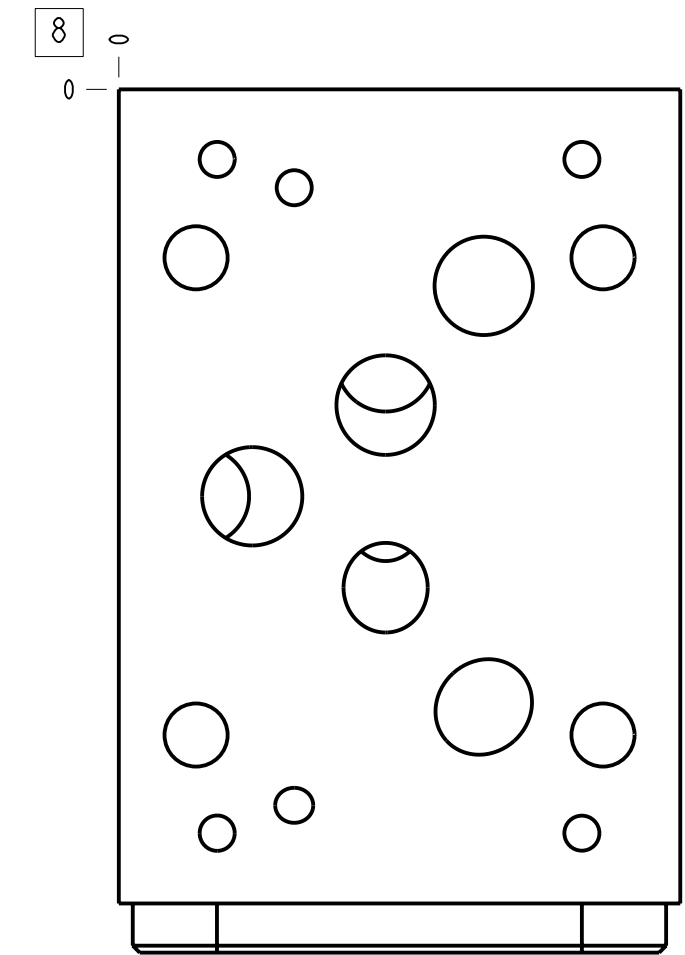
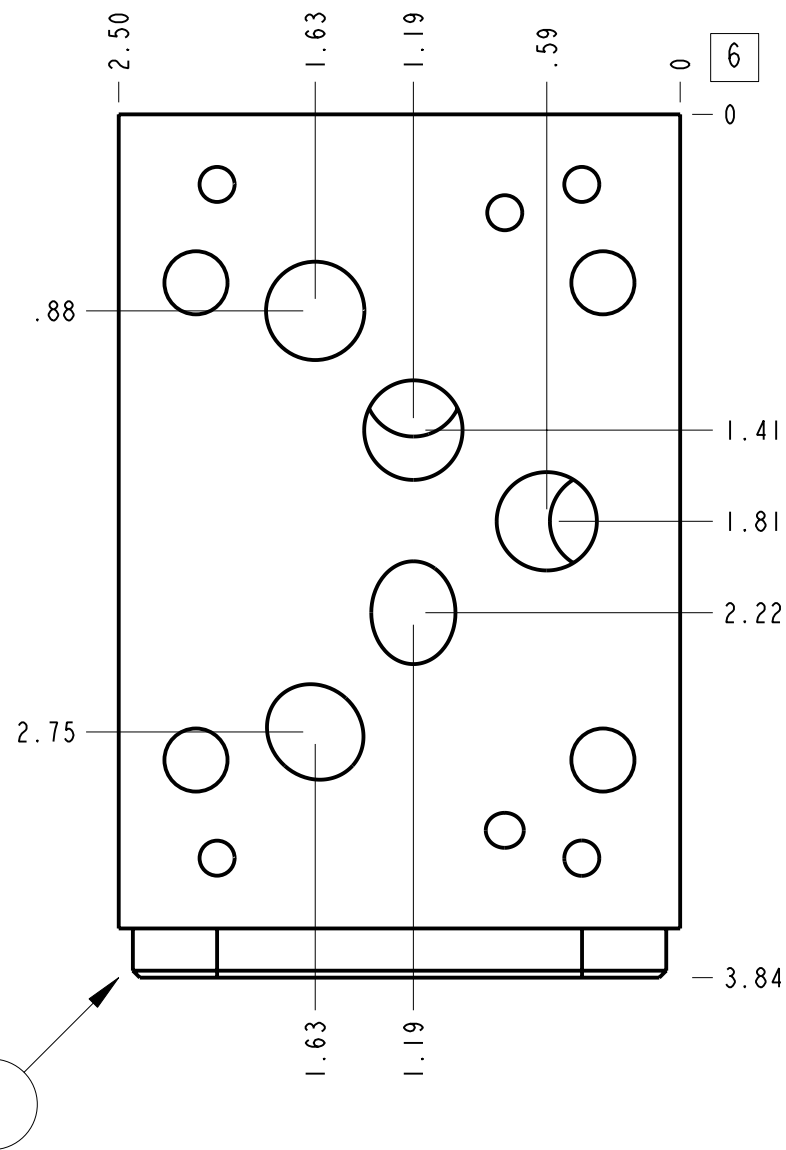
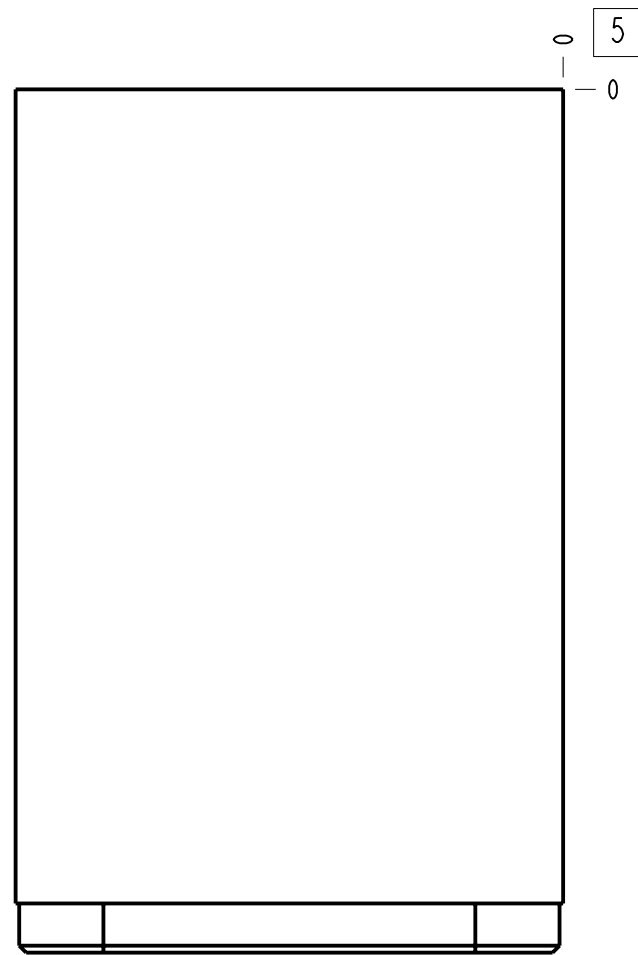


Check, On B, Free Flow Into Valve



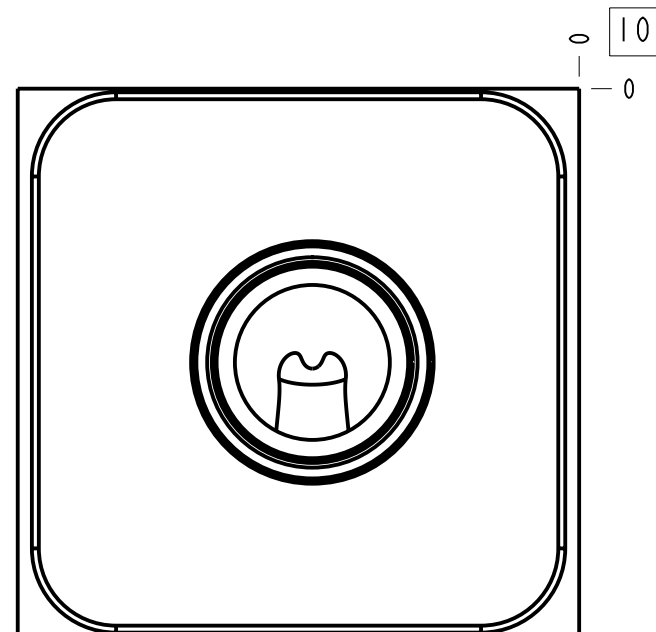
Technical Data	U.S. Units	Metric Units
Cavity	T-5A	
Body Features	Flow into workport A or out of B	
Body Type	Sandwich	
Interface	ISO 05 - X&Y	
Open Cavity Quantity	1	
Stack Height	2.49 in.	63 mm
Weight	1.894 lb.	0,859 kg.
Seal Plate Included (see notes)	No	

Related Accessories	
Part Number	Description
990-120-009	ISO 05 X and Y US sandwich manifold retainer and buna-N seal kit
990-120-010	ISO 05 X and Y US sandwich manifold retainer and Viton seal kit
990-120-011	ISO 05 X and Y Europe sandwich manifold retainer and Viton seal kit
990-120-012	ISO 05 X and Y Europe sandwich manifold retainer and buna-N seal kit



Notes

1. For check valve application, use only with CX*A check valves - free flow nose to side.
2. Stack height value in technical data table includes seal retainer plate.
3. This installation requires a retainer and seal kit which are purchased separately. See "Related Accessories" section.
4. Important: Carefully consider the maximum system pressure. The pressure rating of the manifold is dependent on the manifold material, with the port type/size a secondary consideration. Manifolds constructed of aluminum are not rated for pressures higher than 3000 psi (210 bar), regardless of the port type/size specified.
5. This drawing is for reference only. It is generated by an automated process and does not fall under Sun's document control process.



I	150-720		6061-T6 ALUMINUM	BODY	I
I T E M	PART NO.	SETTING	MATERIAL	PART NAME	Q T Y
MODEL	DJK		ALL DIMENSIONS IN INCH VIEWS ARE THIRD ANGLE		FIRST ANGLE THIRD ANGLE
DESCRIPTION	T-5A Sandwich ISO 05 - X&Y Flow into workport A or out of B		DATE	SCALE	DWG SIZE SHEET
			Aug-20-24	1.170	C I

