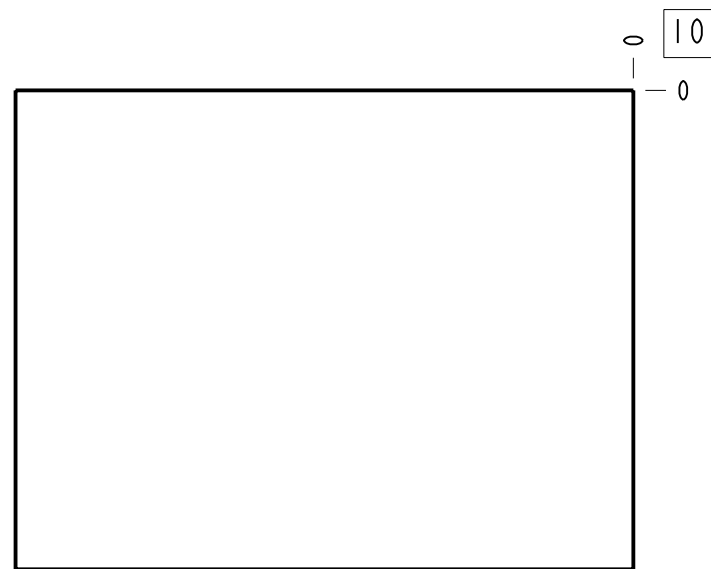
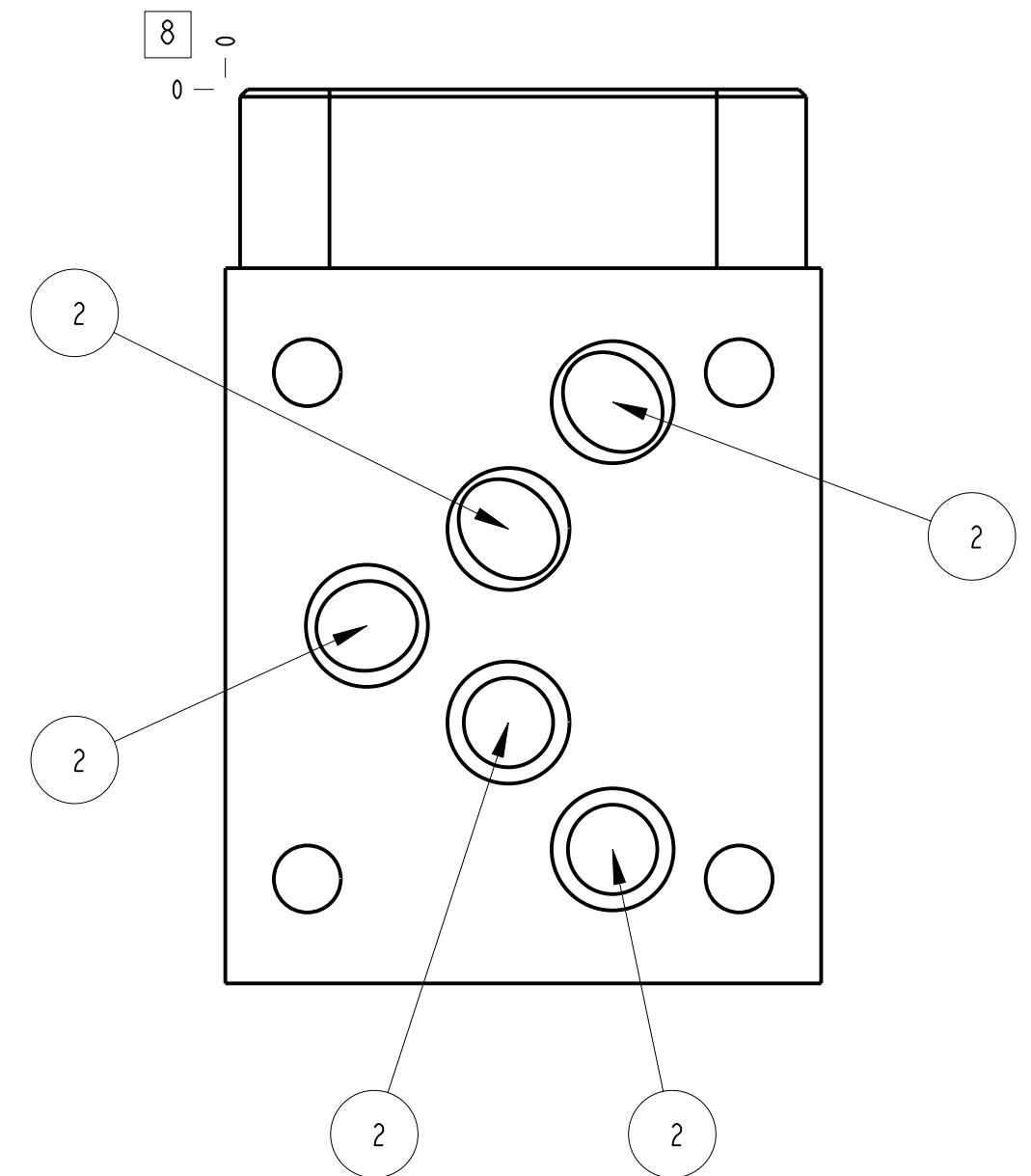
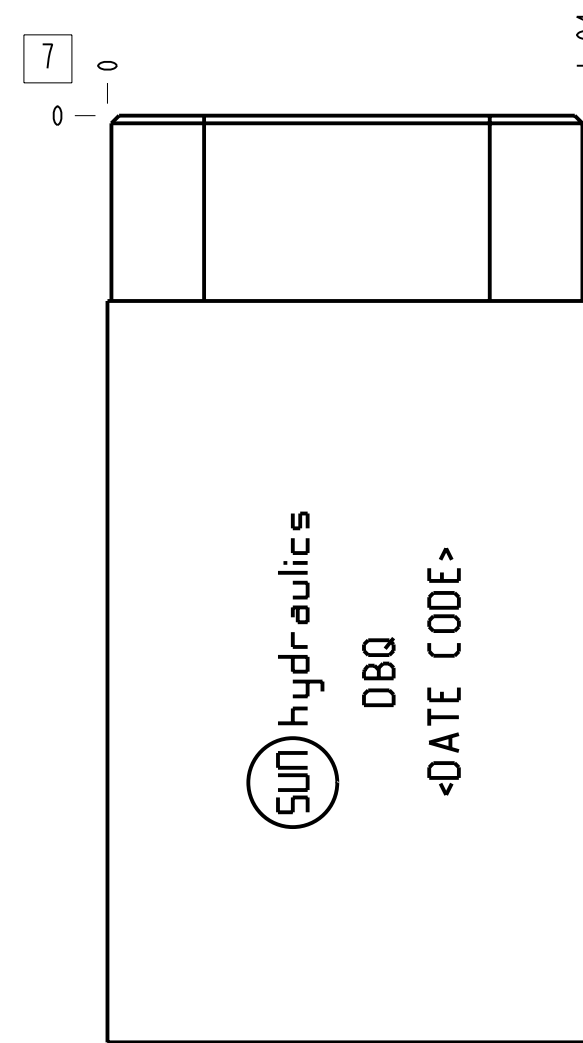
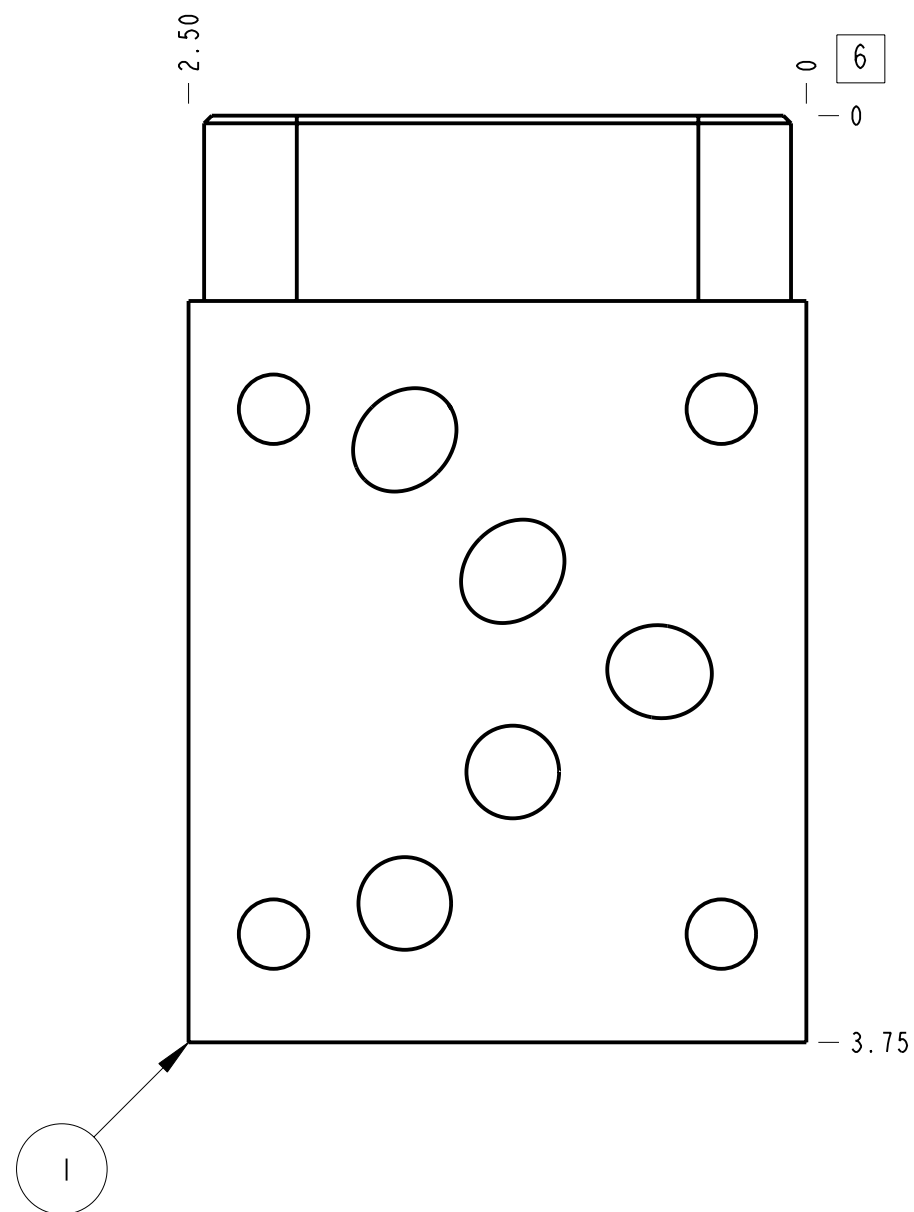
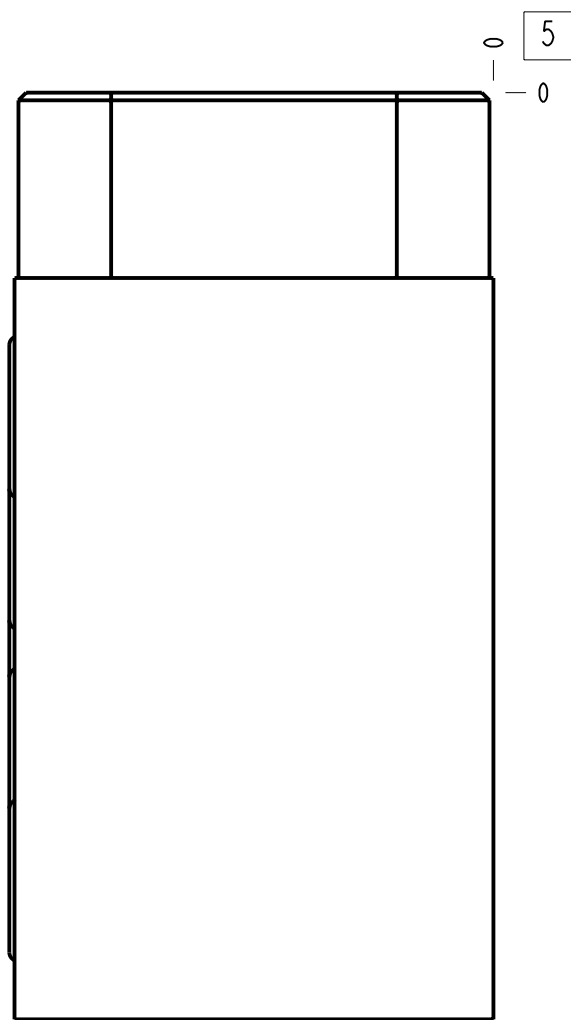


Technical Data	U.S. Units	Metric Units
Cavity		T-5A
Body Features		P to T
Body Type		Sandwich
Interface		ISO 05
Open Cavity Quantity		1
Stack Height	1.94 in.	49 mm
Weight	1.465 lb.	0,664 kg.
Seal Plate Included (see notes)		No



Notes

1. Important: Carefully consider the maximum system pressure. The pressure rating of the manifold is dependent on the manifold material, with the port type/size a secondary consideration. Manifolds constructed of aluminum are not rated for pressures higher than 3000 psi (210 bar), regardless of the port type/size specified.
2. Seal retainer plate is not required for this model.
3. This drawing is for reference only. It is generated by an automated process and does not fall under Sun's document control process.

2	500-001-014		N-0674-70	O-RING	5
1	150-553		6061-T6 ALUMINUM	BODY	1
ITEM	PART NO.	SETTING	MATERIAL	PART NAME	QTY

MODEL	DBQ	ALL DIMENSIONS IN INCH VIEWS ARE THIRD ANGLE			FIRST ANGLE	THIRD ANGLE
DESCRIPTION	T-5A Sandwich ISO 05 P to T	DATE	SCALE	DWG SIZE	SHEET	
		Oct-30-23	1.287	C	1	