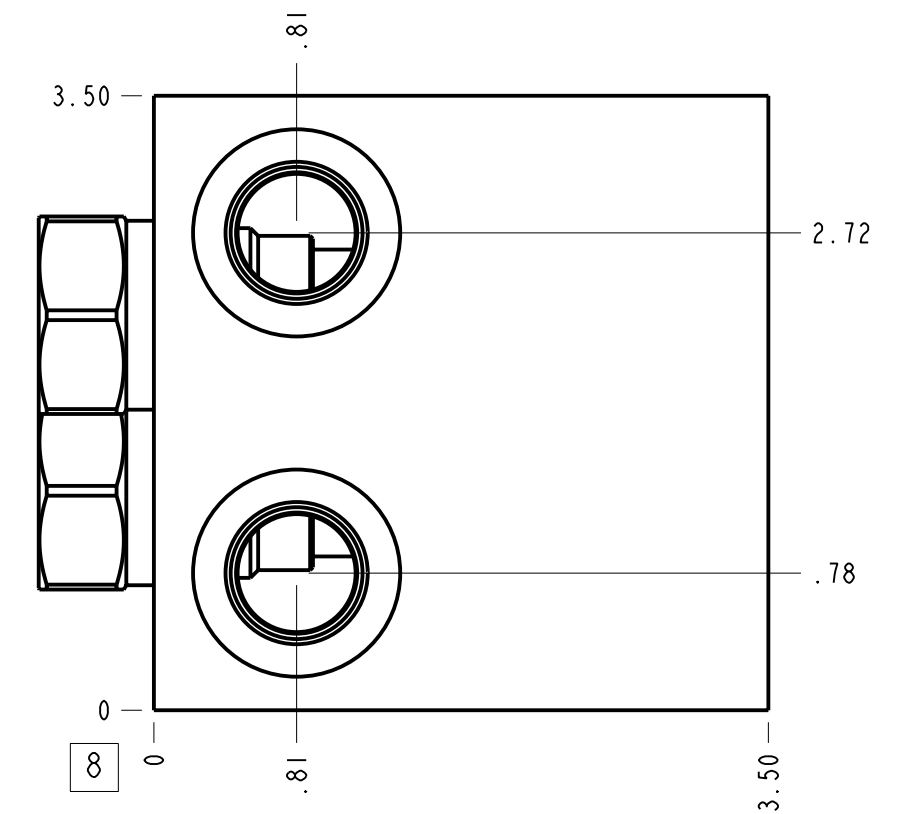
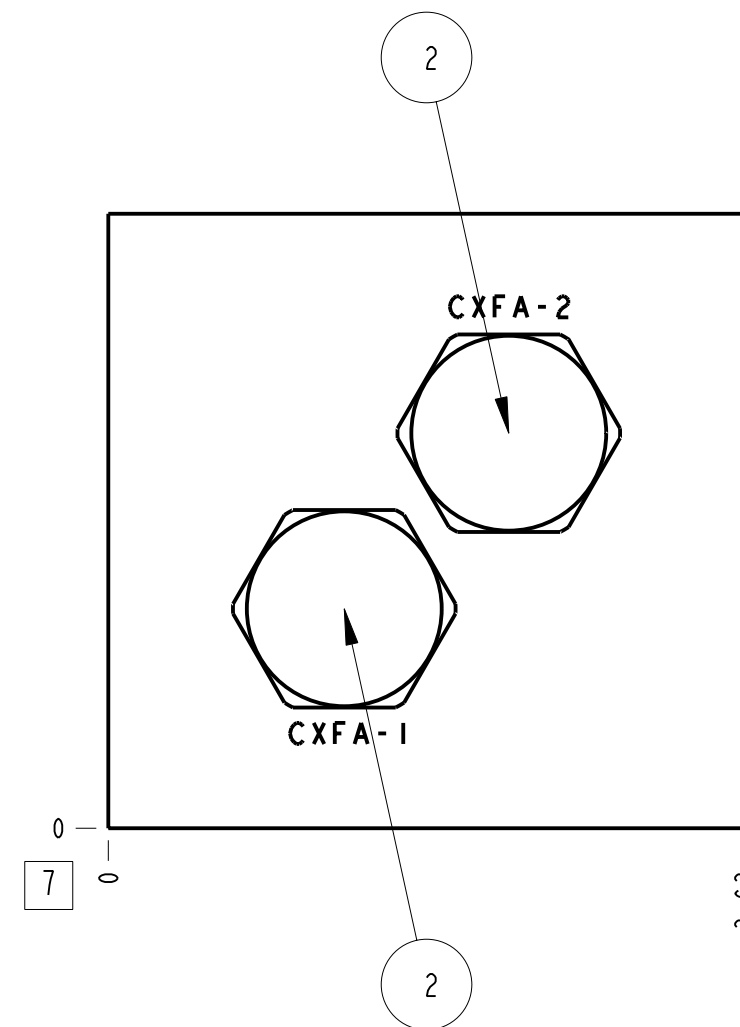
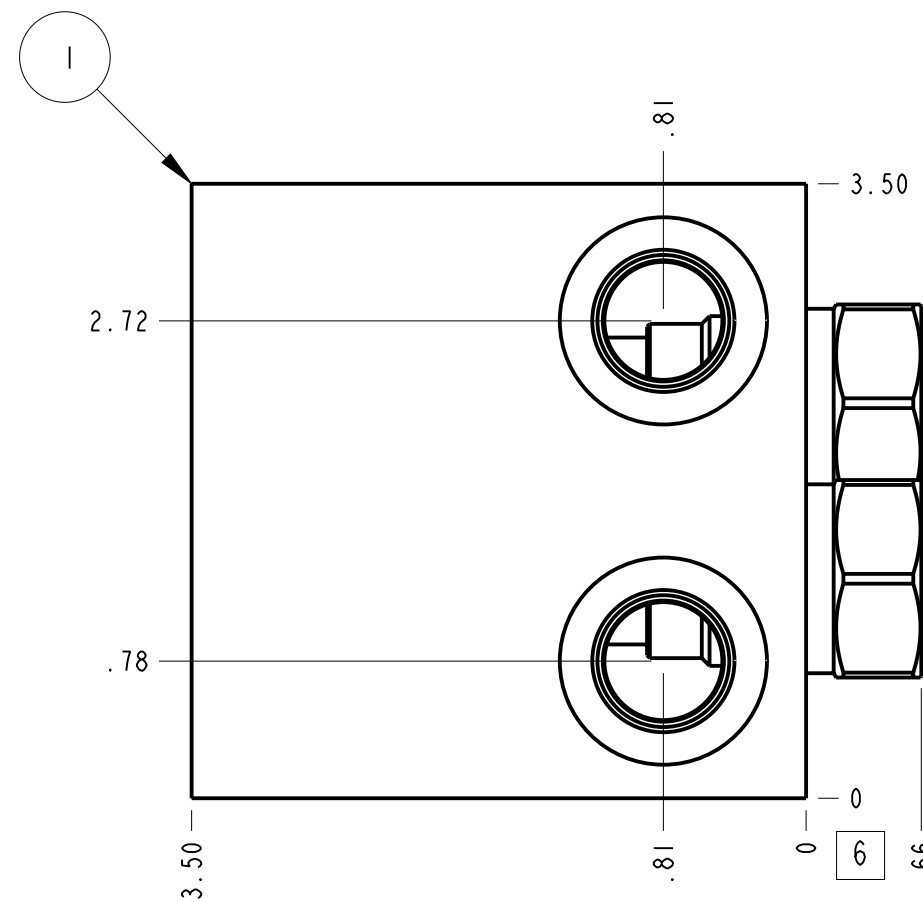
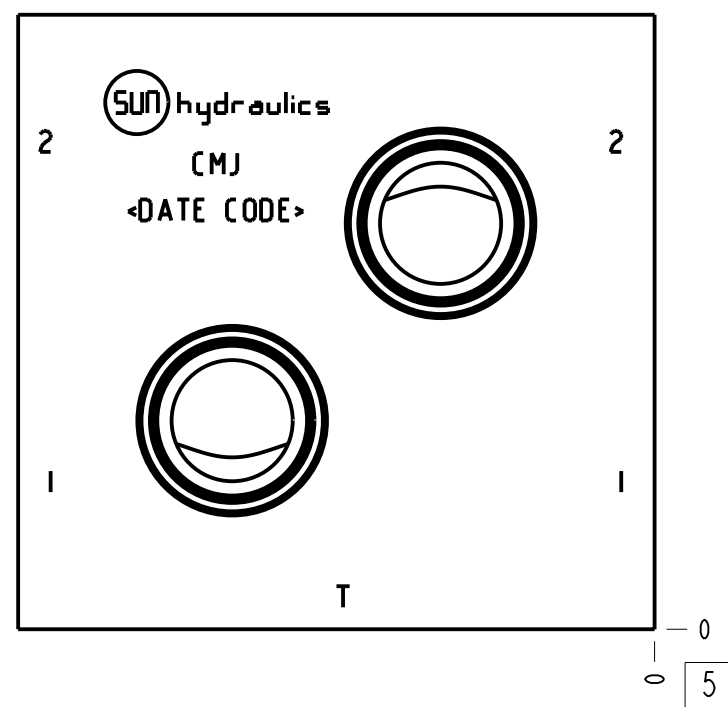
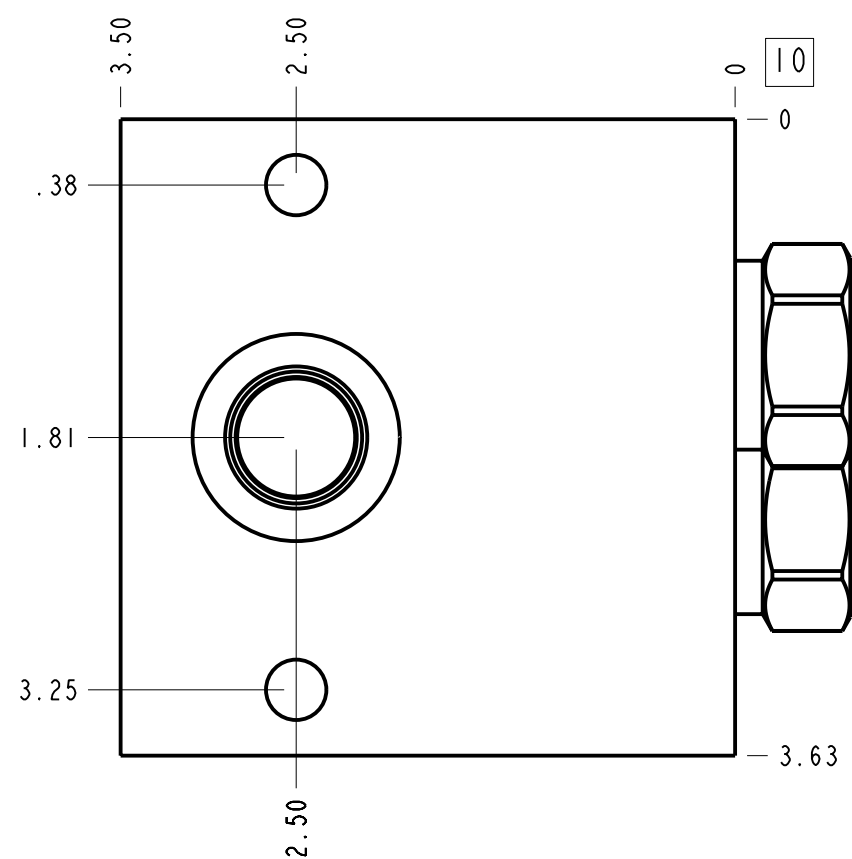


Technical Data	U.S. Units	Metric Units
Cavity	T-3A	
Body Features	Cross port with make up checks	
Body Type	Line mount	
Interface	None	
Open Cavity Quantity	2	
Weight	4.110 lb.	1,864 kg.
Mounting Hole Diameter	.34 in.	8.6 mm
Mounting Hole Depth	Through	
Mounting Hole Quantity	2	
Includes integral cartridge(s)	Yes (see Included Components)	



Notes

- Important: Carefully consider the maximum system pressure. The pressure rating of the manifold is dependent on the manifold material, with the port type/size a secondary consideration. Manifolds constructed of aluminum are not rated for pressures higher than 3000 psi (210 bar), regardless of the port type/size specified.
- This drawing is for reference only. It is generated by an automated process and does not fall under Sun's document control process.



Port Headings		
Product	Port	Size
CMJ	All Ports	SAE 8

2	CXFA-XAN		CHECK VALVE	2	
1	151-171-004	6061-T6 ALUMINUM	BODY	1	
I T E M	PART NO.	SETTING	MATERIAL	PART NAME	Q T Y

MODEL	CMJ	ALL DIMENSIONS IN INCH VIEWS ARE THIRD ANGLE		FIRST ANGLE	THIRD ANGLE
DESCRIPTION	T-3A Line mount Cross port with make up checks	DATE	SCALE	DWG SIZE	SHEET
		May-02-24	0.914	C	1

