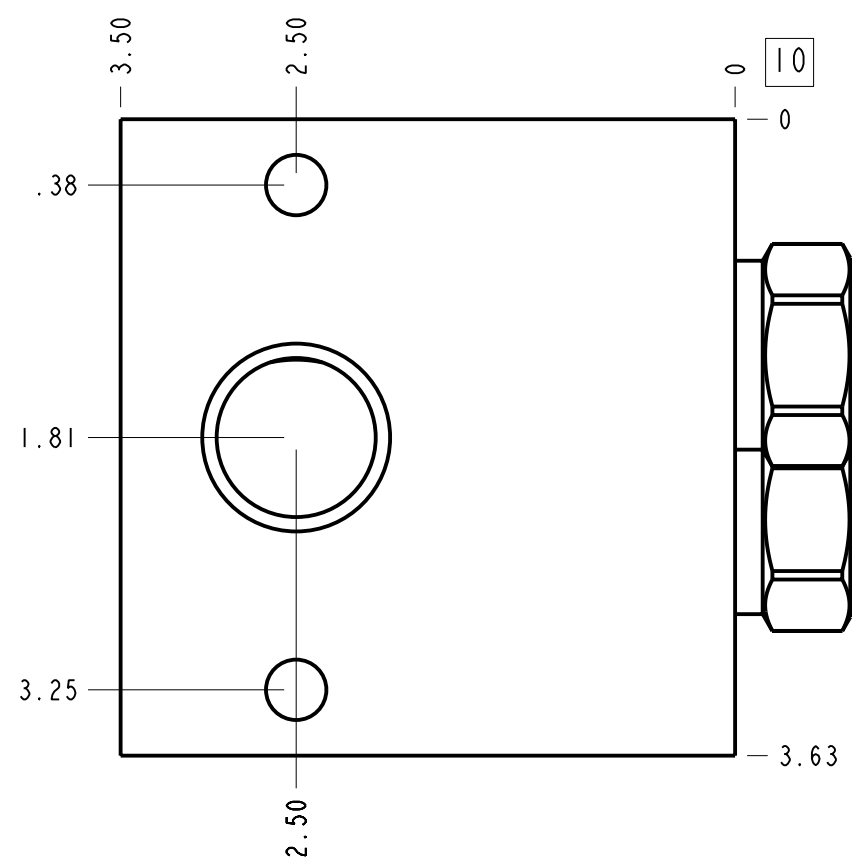
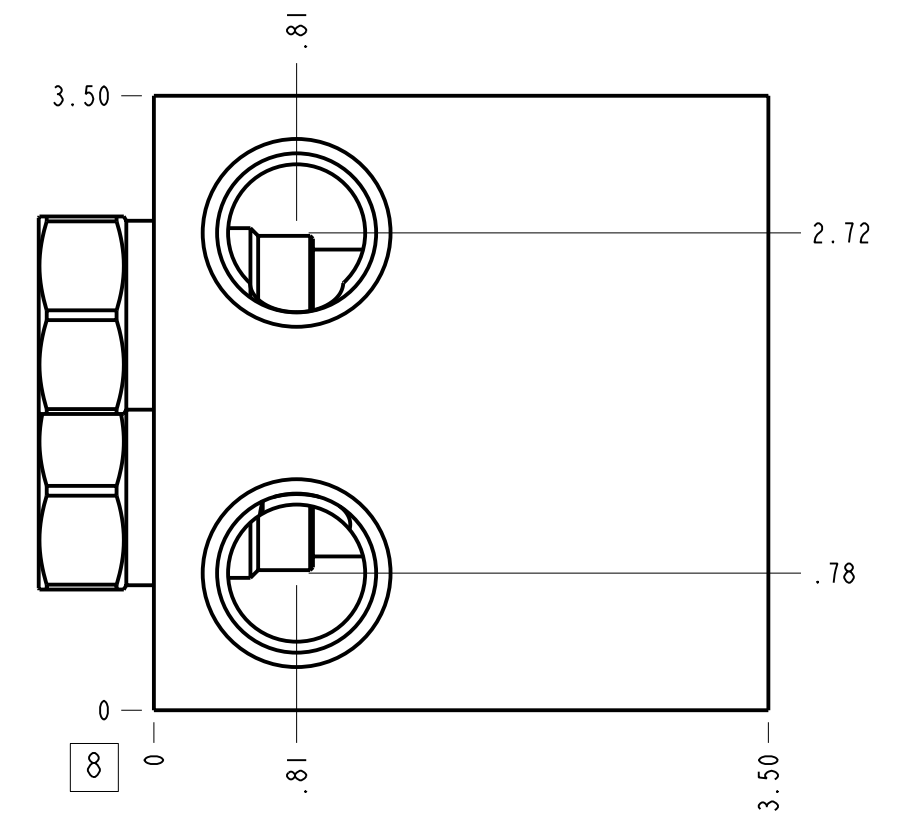
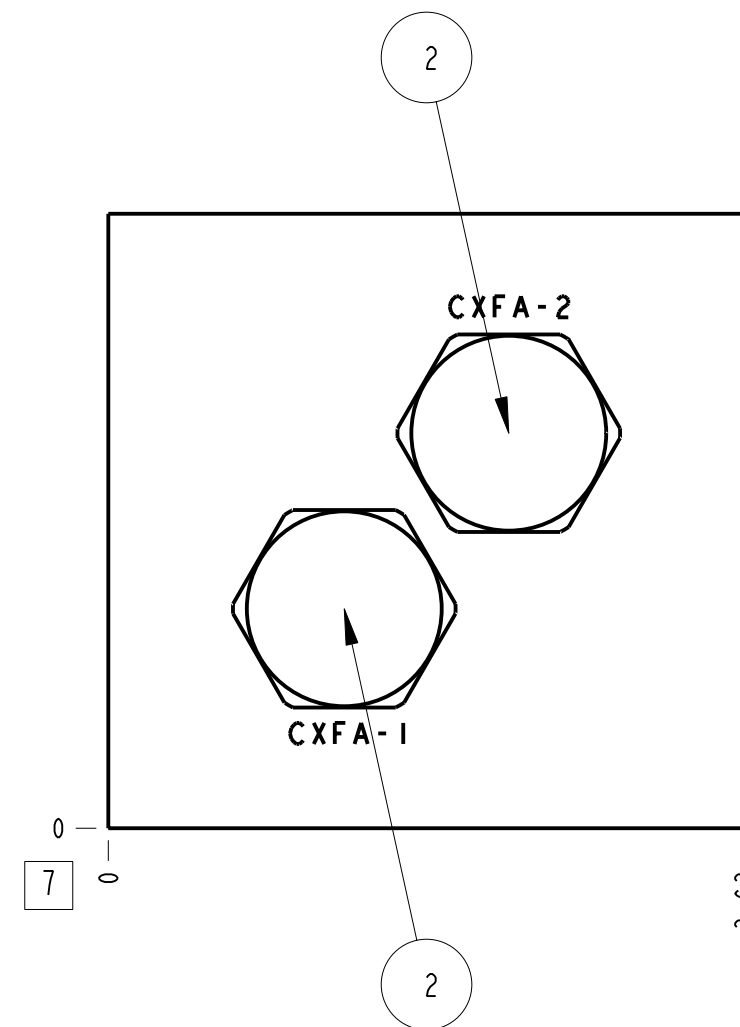
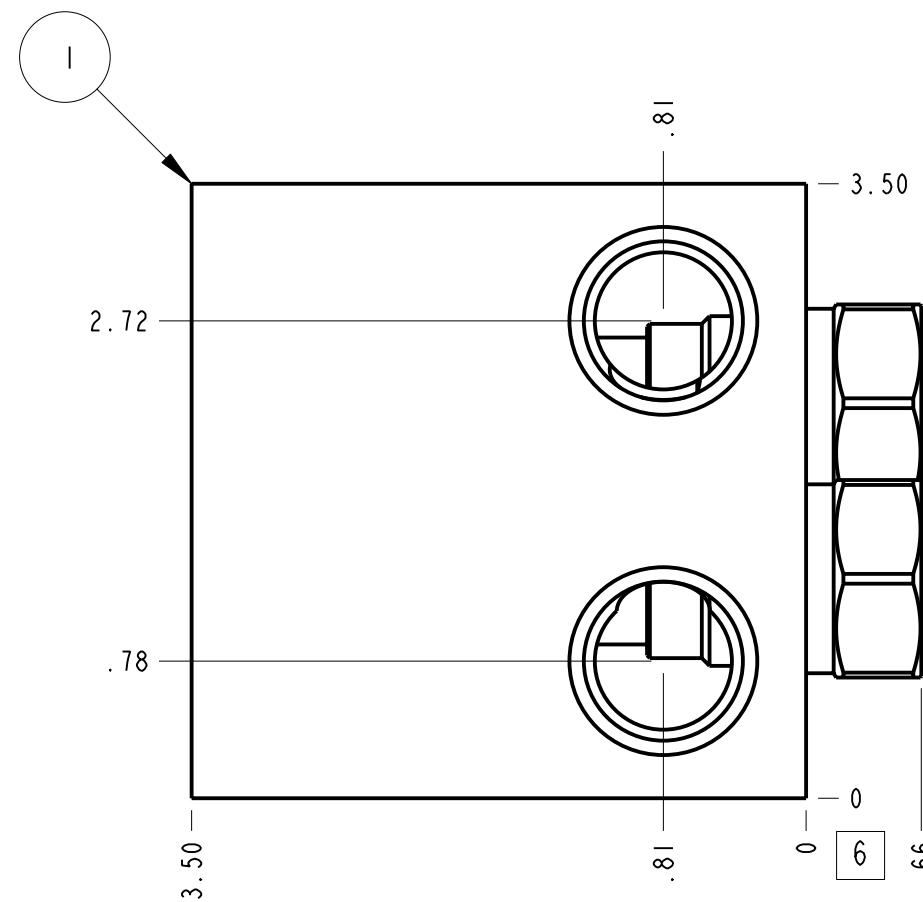
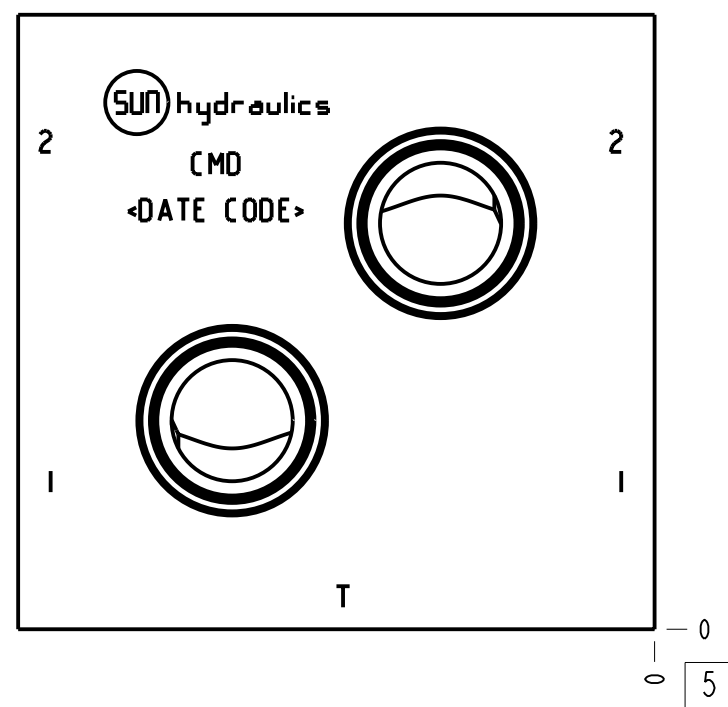


Technical Data	U.S. Units	Metric Units
Cavity	T-3A	
Body Features	Cross port with make up checks	
Body Type	Line mount	
Interface	None	
Open Cavity Quantity	2	
Weight	3.939 lb.	1,787 kg.
Mounting Hole Diameter	.34 in.	8.6 mm
Mounting Hole Depth	Through	
Mounting Hole Quantity	2	
Includes integral cartridge(s)	Yes (see Included Components)	



**Notes**

- Important: Carefully consider the maximum system pressure. The pressure rating of the manifold is dependent on the manifold material, with the port type/size a secondary consideration. Manifolds constructed of aluminum are not rated for pressures higher than 3000 psi (210 bar), regardless of the port type/size specified.
- This drawing is for reference only. It is generated by an automated process and does not fall under Sun's document control process.

Port Headings		
Product	Port	Size
CMD	All Ports	3/4" NPTF

2	CXFA-XAN		CHECK VALVE	2		
1	151-171-003		6061-T6 ALUMINUM	BODY	1	
ITEM	PART NO.	SETTING	MATERIAL	PART NAME	QTY	
	MODEL		CMD	ALL DIMENSIONS IN INCH VIEWS ARE THIRD ANGLE	FIRST ANGLE	THIRD ANGLE
DESCRIPTION		T-3A Line mount Cross port with make up checks	DATE	SCALE	DWG SIZE	SHEET
		Sep-22-23	0.914	C	1	

