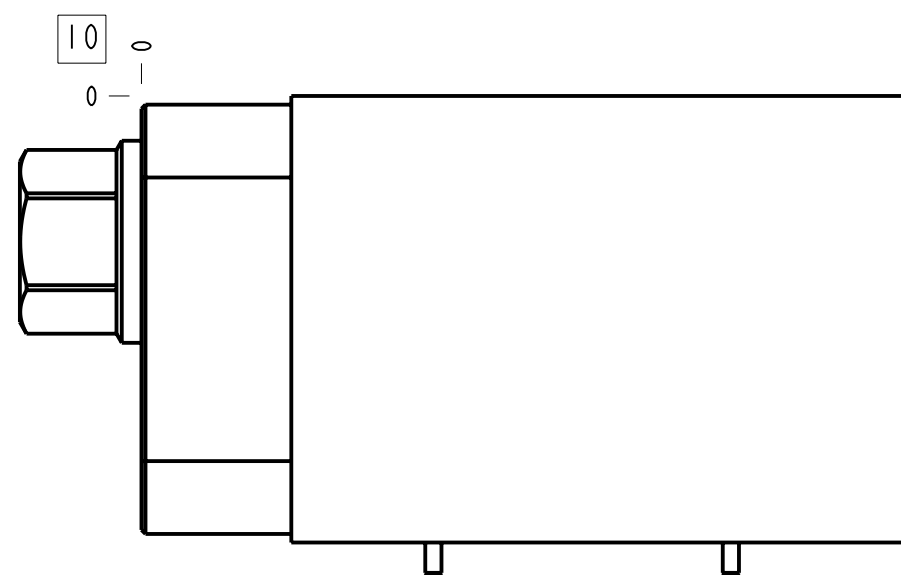
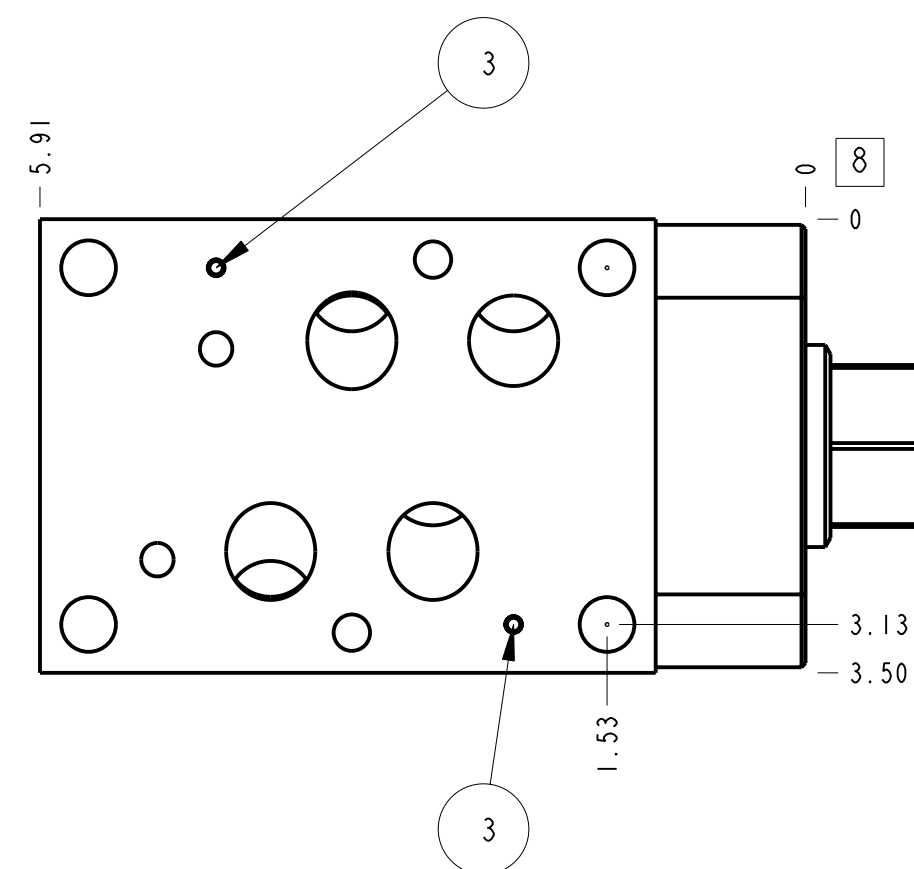
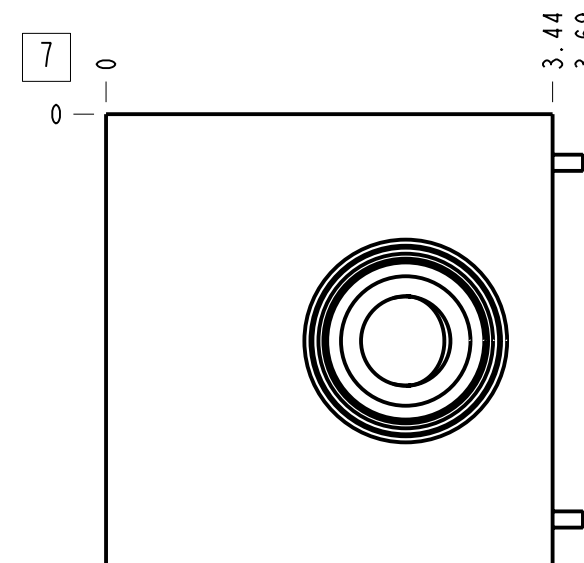
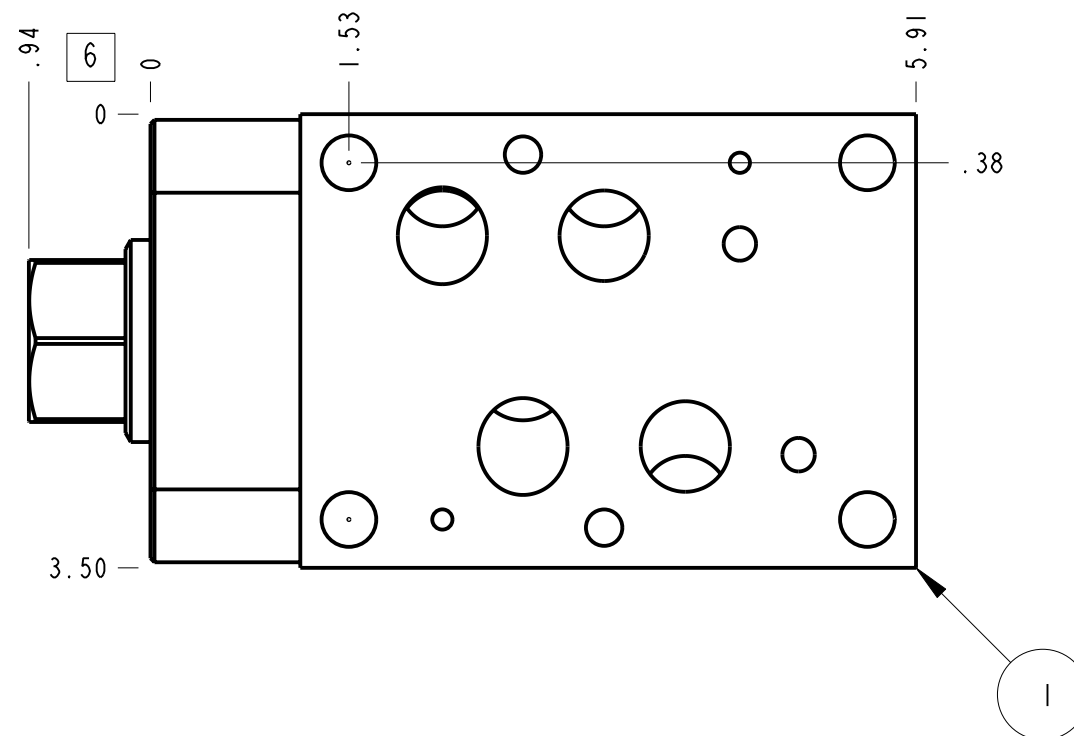
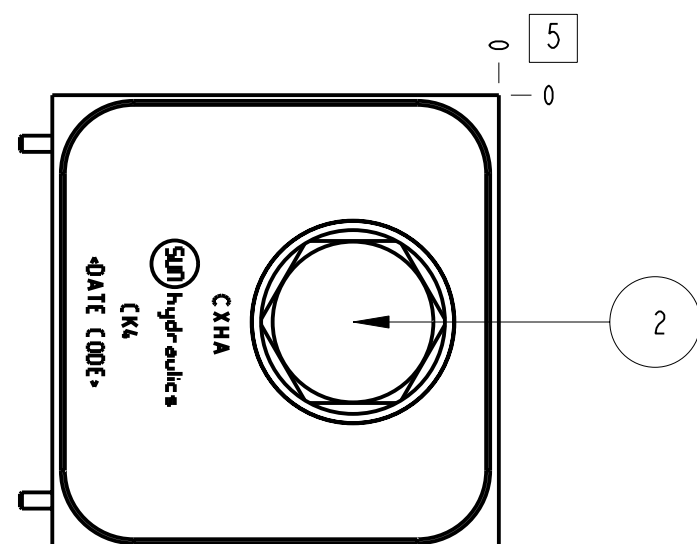
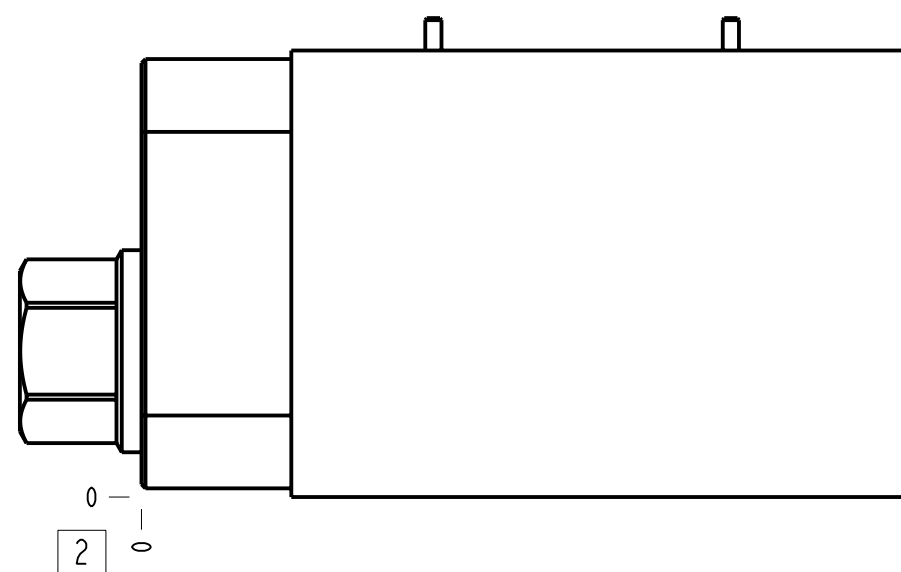


Technical Data	U.S. Units	Metric Units
Cavity	T-16A	
Body Features	On A with reverse flow check	
Body Type	Sandwich	
Interface	ISO 07	
Open Cavity Quantity	1	
Stack Height	3.52 in.	90 mm
Weight	6.437 lb.	2,920 kg.
Seal Plate Included (see notes)	Yes	
Includes integral cartridge(s)	Yes (see Included Components)	



Notes

1. Stack height value in technical data table includes seal retainer plate.
2. Important: Carefully consider the maximum system pressure. The pressure rating of the manifold is dependent on the manifold material, with the port type/size a secondary consideration. Manifolds constructed of aluminum are not rated for pressures higher than 3000 psi (210 bar), regardless of the port type/size specified.
3. This drawing is for reference only. It is generated by an automated process and does not fall under Sun's document control process.
4. Items without balloons are shipped loose.

6	700-006			SEAL PLATE	1
5	500-001-118			O-RING	4
4	500-001-111			O-RING	2
3	811-001-006		LOW CARBON STEEL	MACHINED PART	2
2	CXHA-XAN			CHECK VALVE	1
1	152-184		6061-T6 ALUMINUM	BODY	1
I T E M	PART NO.	SETTING	MATERIAL	PART NAME	Q T Y

MODEL CK4		ALL DIMENSIONS IN INCH VIEWS ARE THIRD ANGLE			FIRST ANGLE	THIRD ANGLE
DESCRIPTION T-16A Sandwich ISO 07 On A with reverse flow check		DATE Jun-14-24	SCALE 0.675	DWG SIZE C	SHEET 1	