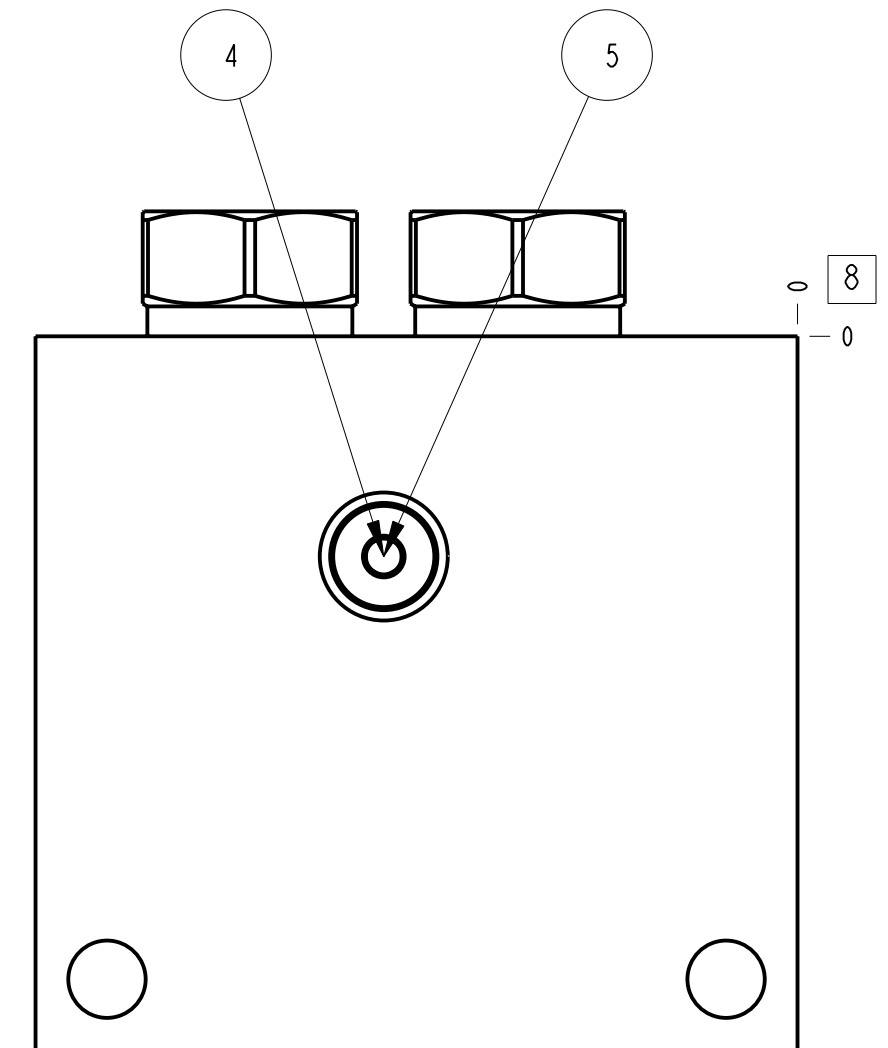
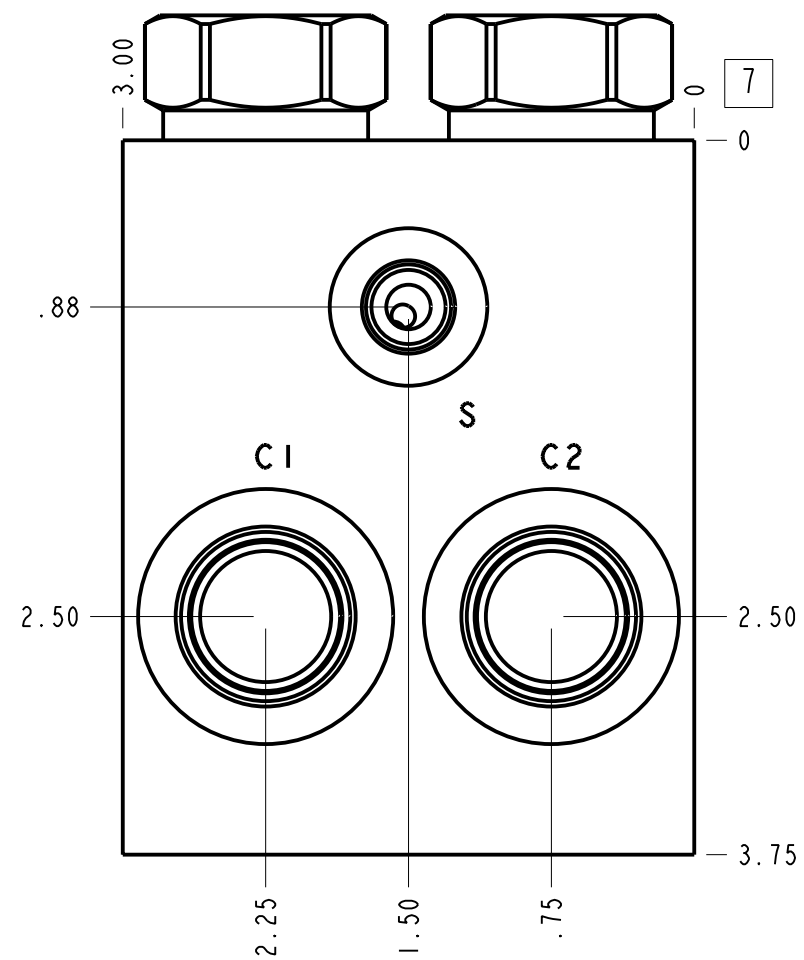
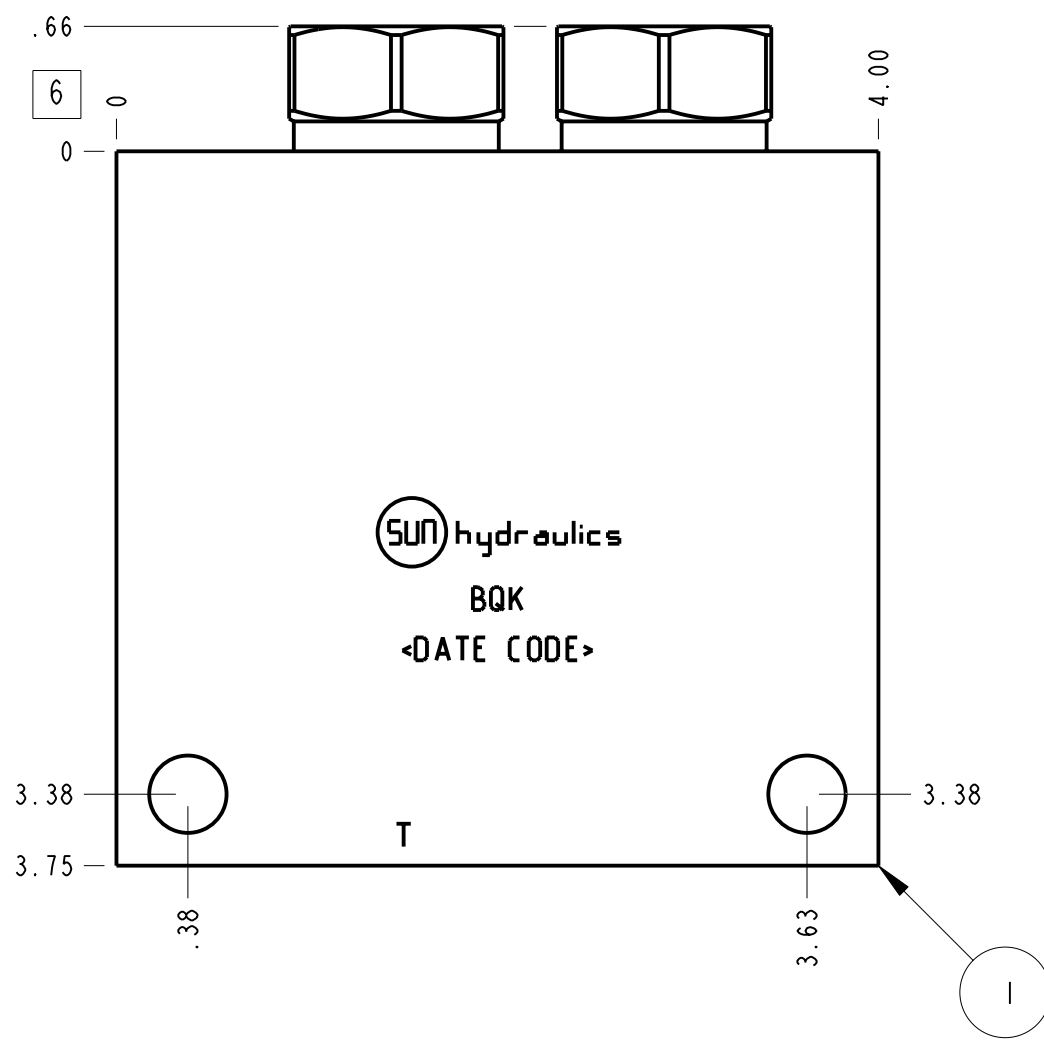
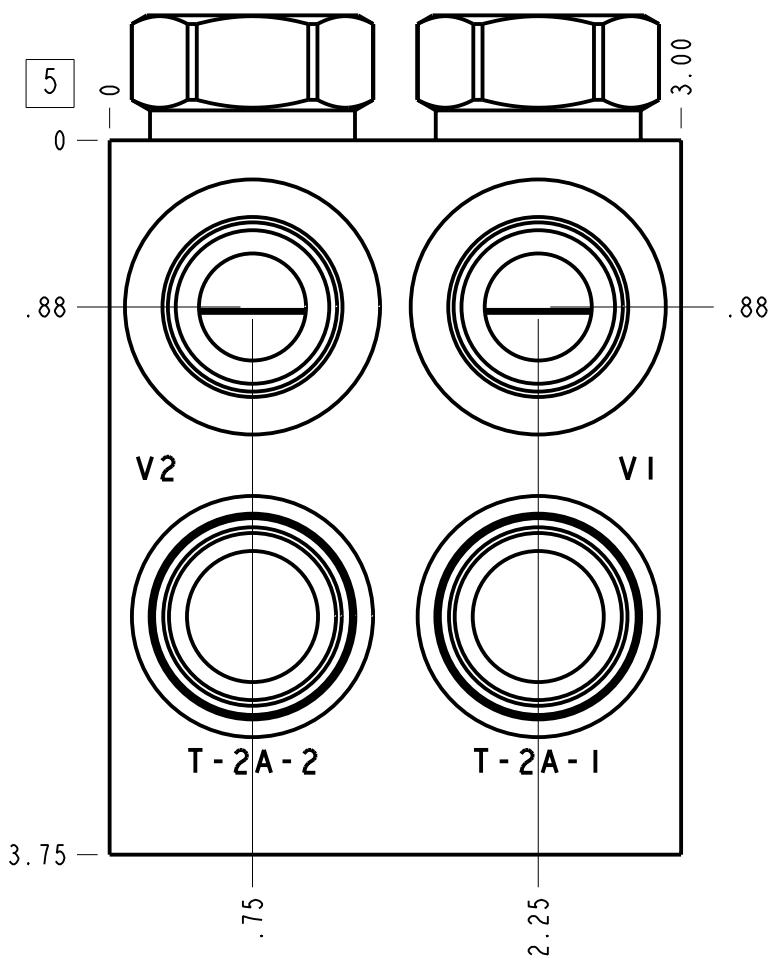
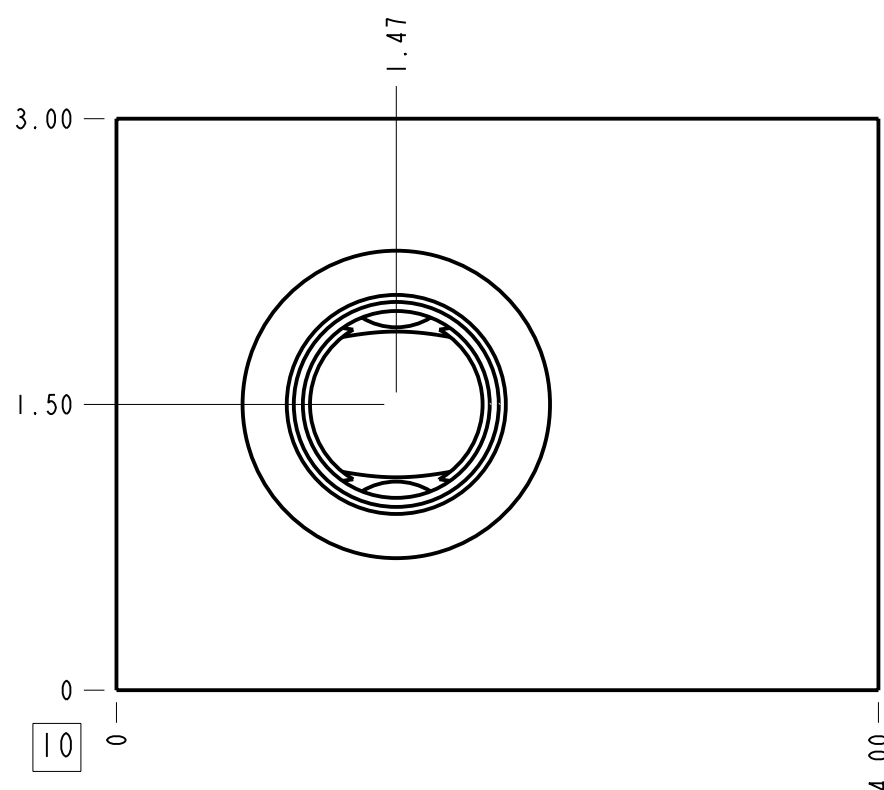


Technical Data	U.S. Units	Metric Units
Cavity	T-2A	
Body Features	Cushion lock with make up checks and shuttle	
Body Type	Line mount	
Interface	None	
Open Cavity Quantity	2	
Weight	4.617 lb.	2,094 kg.
Mounting Hole Diameter	.42 in.	10,7 mm
Mounting Hole Depth	Through	
Mounting Hole Quantity	2	
Includes integral cartridge(s)	Yes (see Included Components)	



Notes

- Important: Carefully consider the maximum system pressure. The pressure rating of the manifold is dependent on the manifold material, with the port type/size a secondary consideration. Manifolds constructed of aluminum are not rated for pressures higher than 3000 psi (210 bar), regardless of the port type/size specified.
- This drawing is for reference only. It is generated by an automated process and does not fall under Sun's document control process.



Port Headings		
Product	Port	Size
BQK	Ports C1, C2, V1, V2	SAE 10
BQK	Port T	SAE 12
BQK	Port S	SAE 4

5	A330-006-004			SAE-4 PLUG	1
4	CSZNXXN			SHUTTLE VALVE	1
3	CXEDXAN			CHECK VALVE	2
2	CXFA-XAN			CHECK VALVE	2
1	150-233-003		6061-T6 ALUMINUM	BODY	1
I T E M	PART NO.	SETTING	MATERIAL	PART NAME	Q T Y

MODEL		BQK		ALL DIMENSIONS IN INCH VIEWS ARE THIRD ANGLE		FIRST ANGLE		THIRD ANGLE	
DESCRIPTION			DATE	SCALE	DWG SIZE	SHEET			
T-2A Line mount (See Technical Data for Body Features)			Apr-24-24	0.992	C	1			