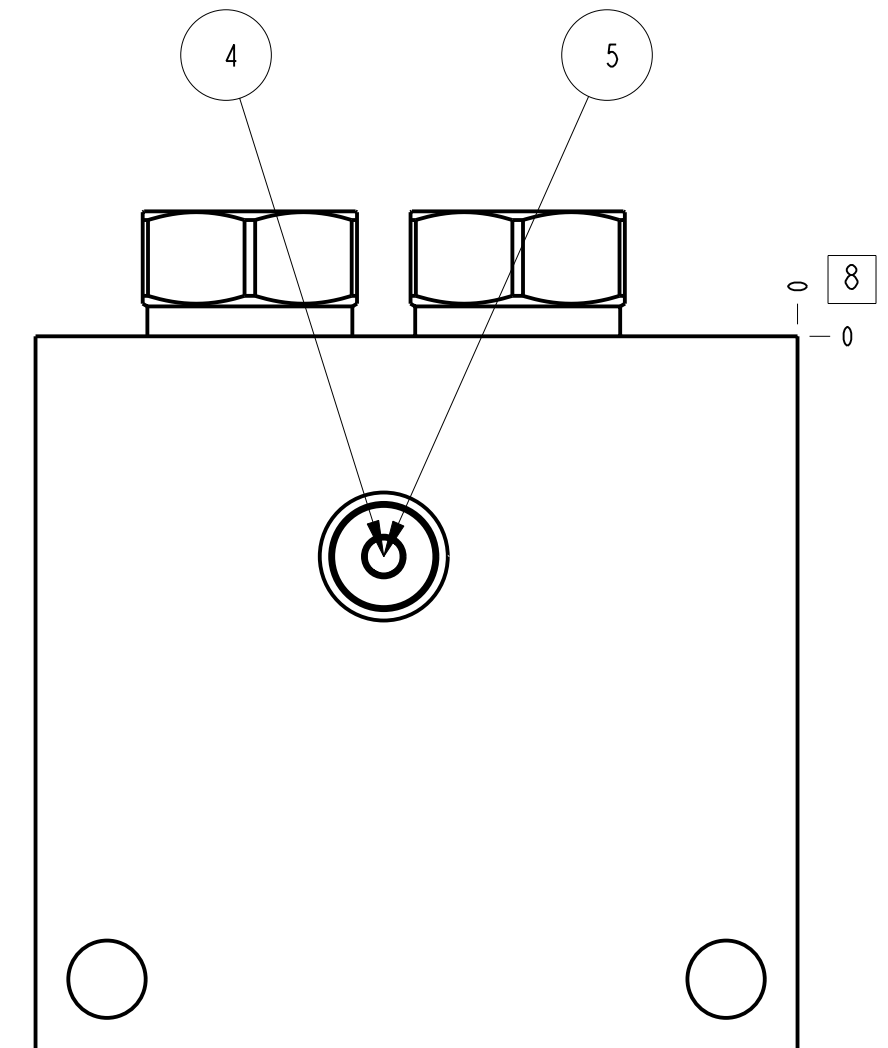
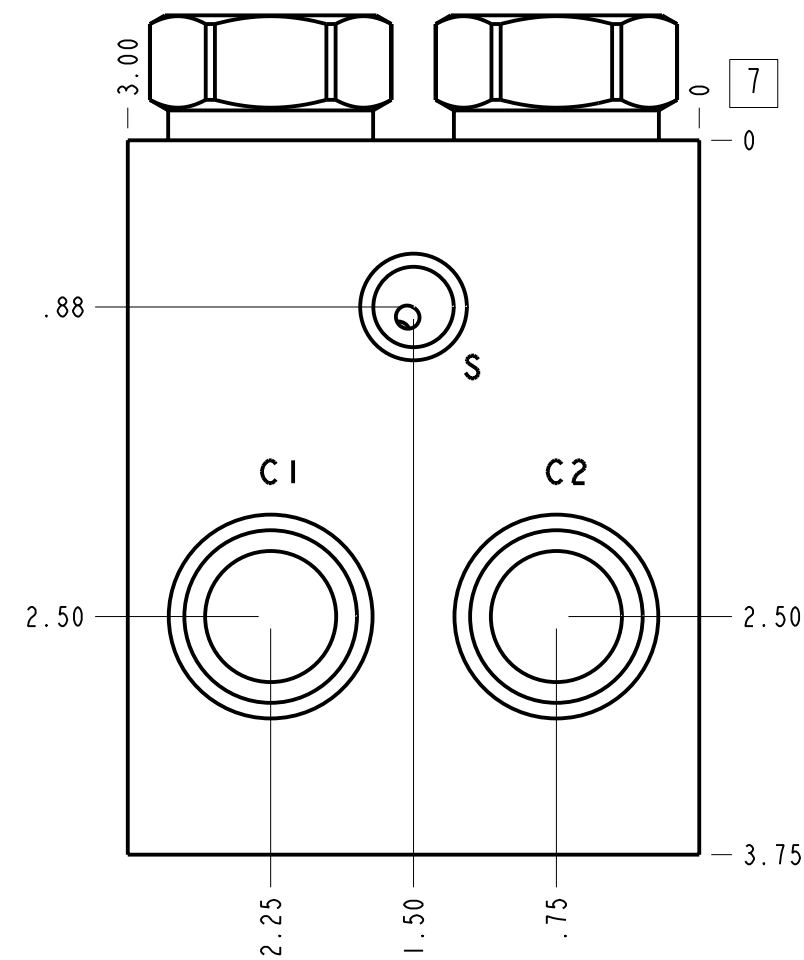
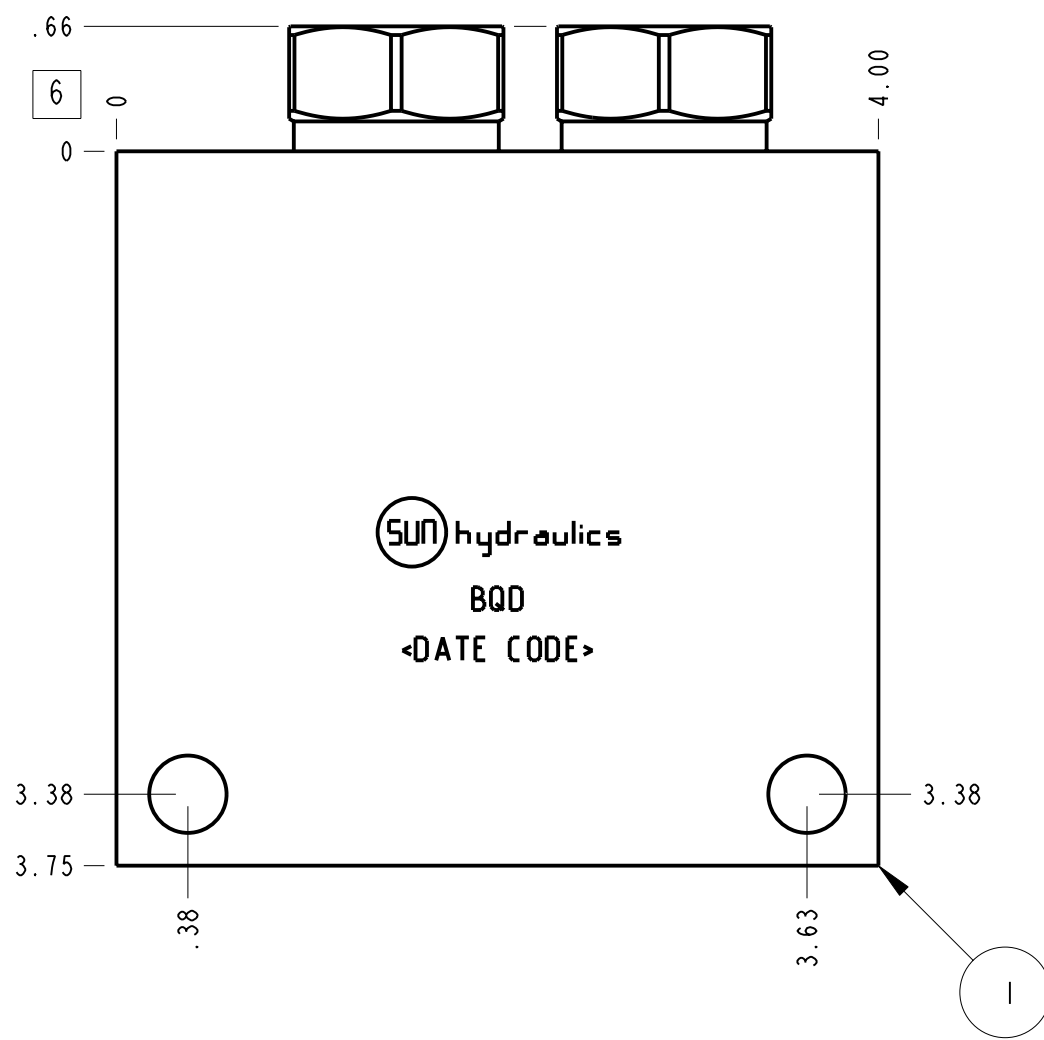
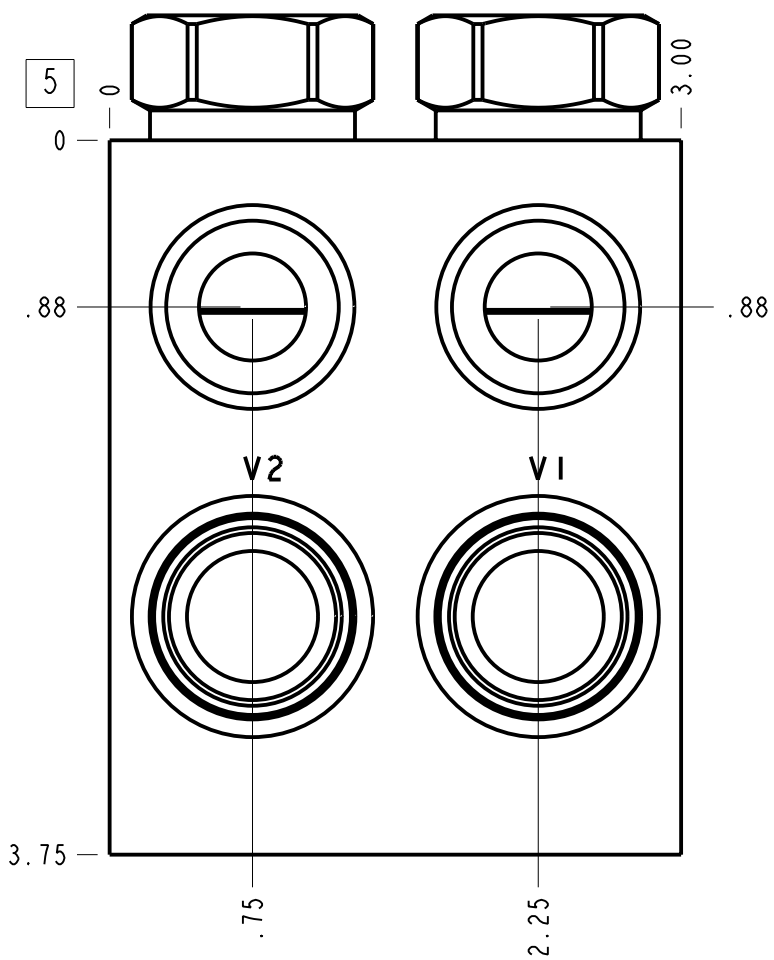
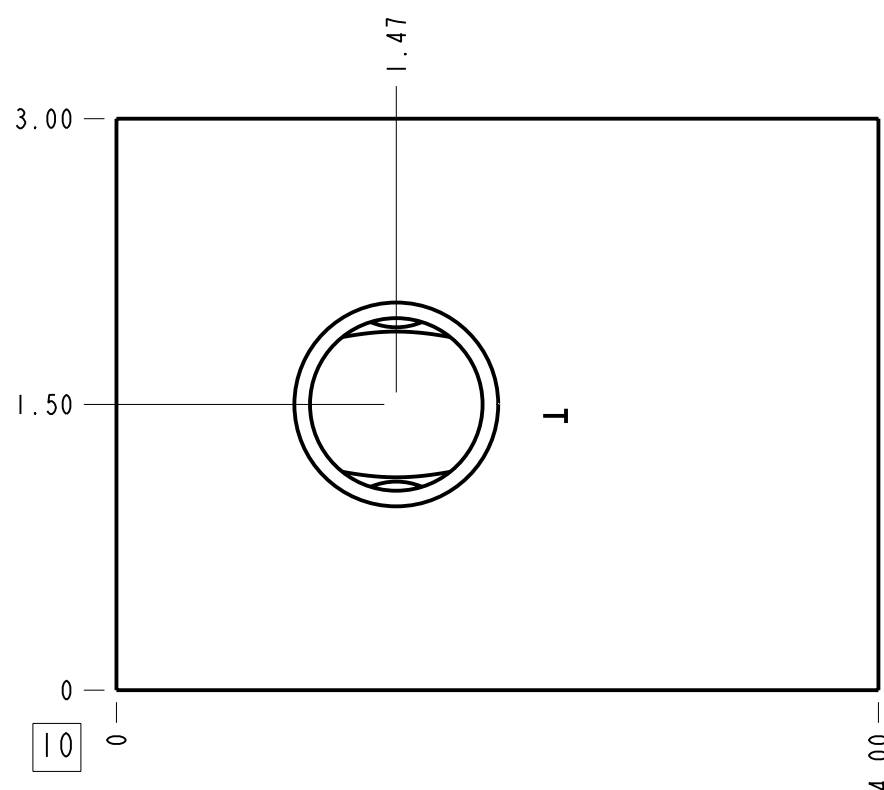


Technical Data	U.S. Units	Metric Units
Cavity	T-2A	
Body Features	Cushion lock with make up checks and shuttle	
Body Type	Line mount	
Interface	None	
Open Cavity Quantity	2	
Weight	4.588 lb.	2,081 kg.
Mounting Hole Diameter	.42 in.	10,7 mm
Mounting Hole Depth	Through	
Mounting Hole Quantity	2	



Notes

- Important: Carefully consider the maximum system pressure. The pressure rating of the manifold is dependent on the manifold material, with the port type/size a secondary consideration. Manifolds constructed of aluminum are not rated for pressures higher than 3000 psi (210 bar), regardless of the port type/size specified.
- This drawing is for reference only. It is generated by an automated process and does not fall under Sun's document control process.



Port Headings		
Product	Port	Size
BQD	Ports C1,C2,V1,V2	3/4" NPTF
BQD	Port T	3/4" NPTF
BQD	Port S	1/4" NPTF

5	A330-006-004			SAE-4 PLUG	1
4	CSZNXXN			SHUTTLE VALVE	1
3	CXEDXAN			CHECK VALVE	2
2	CXFA-XAN			CHECK VALVE	2
1	150-233-002	6061-T6 ALUMINUM		BODY	1
ITEM	PART NO.	SETTING	MATERIAL	PART NAME	QTY

MODEL		BQD		ALL DIMENSIONS IN INCH VIEWS ARE THIRD ANGLE		FIRST ANGLE		THIRD ANGLE	
DESCRIPTION			DATE	SCALE	DWG SIZE	SHEET			
T-2A Line mount (See Technical Data for Body Features)			Sep-05-24	0.992	C	1			