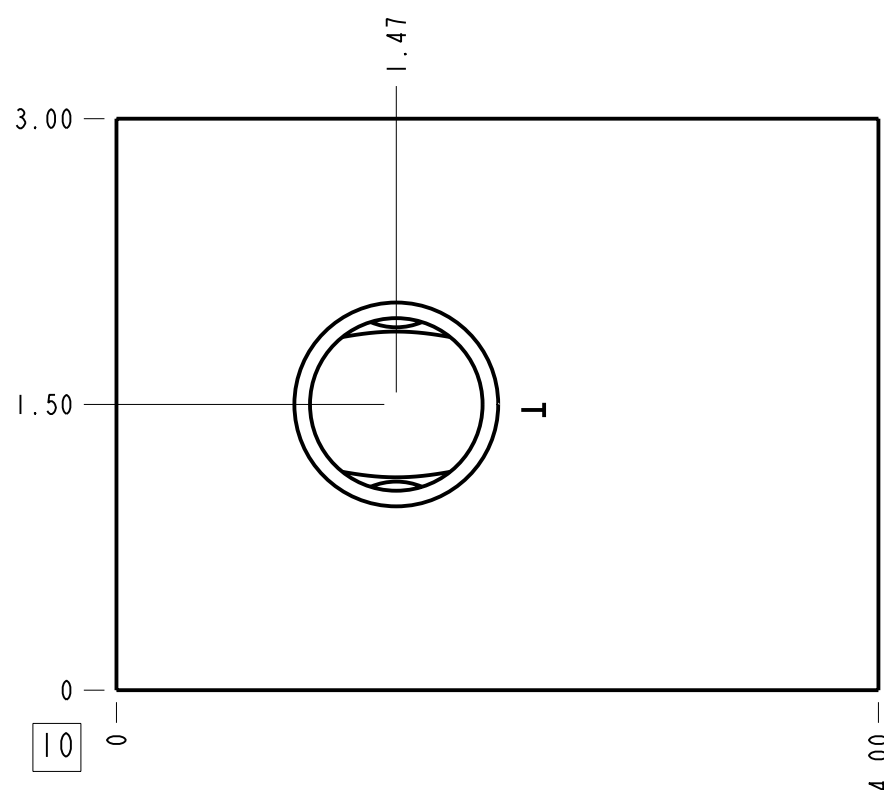
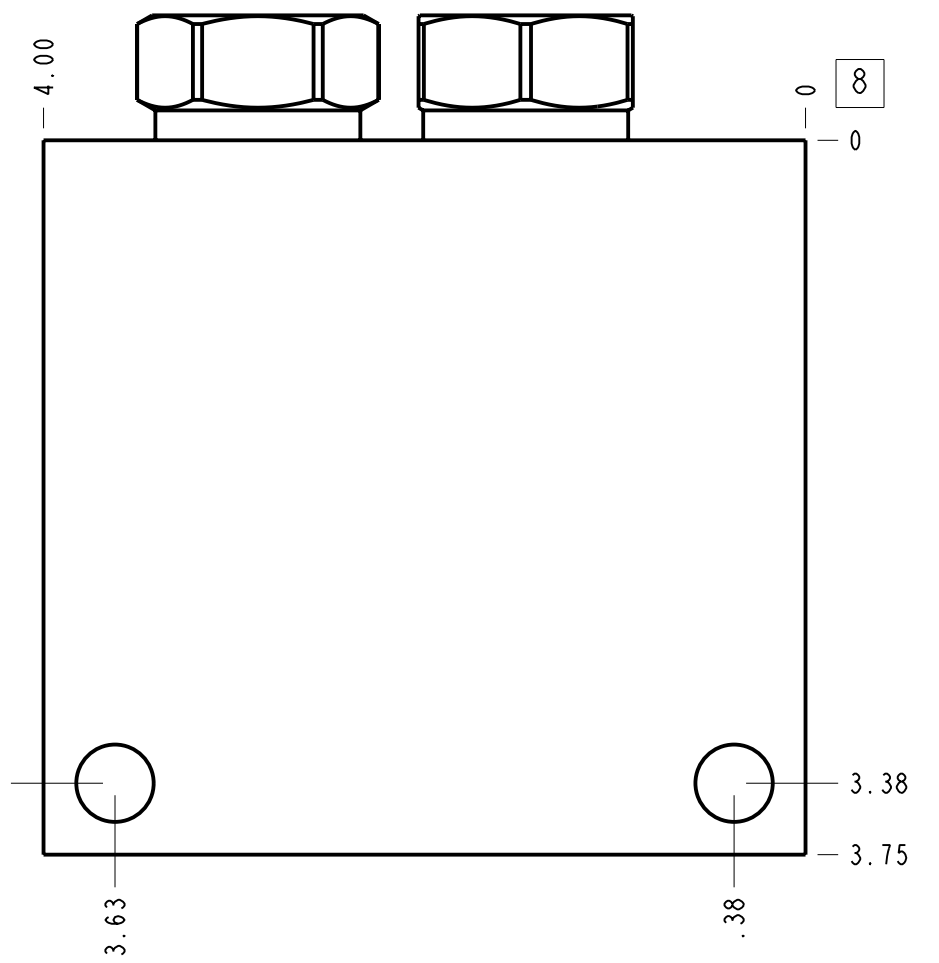
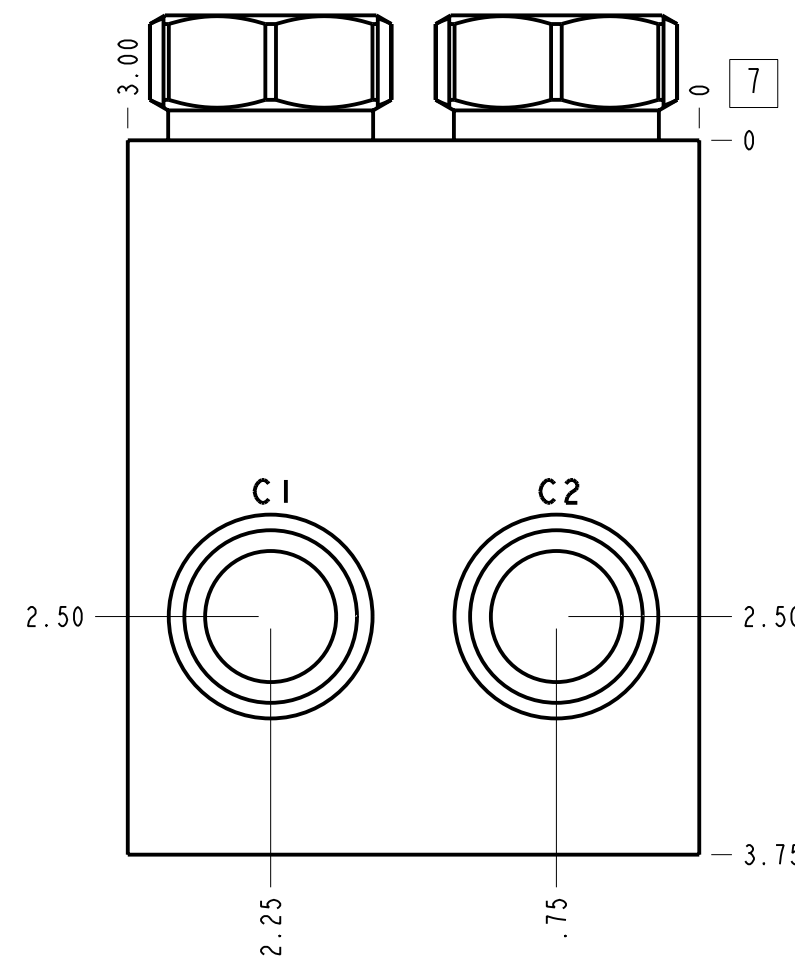
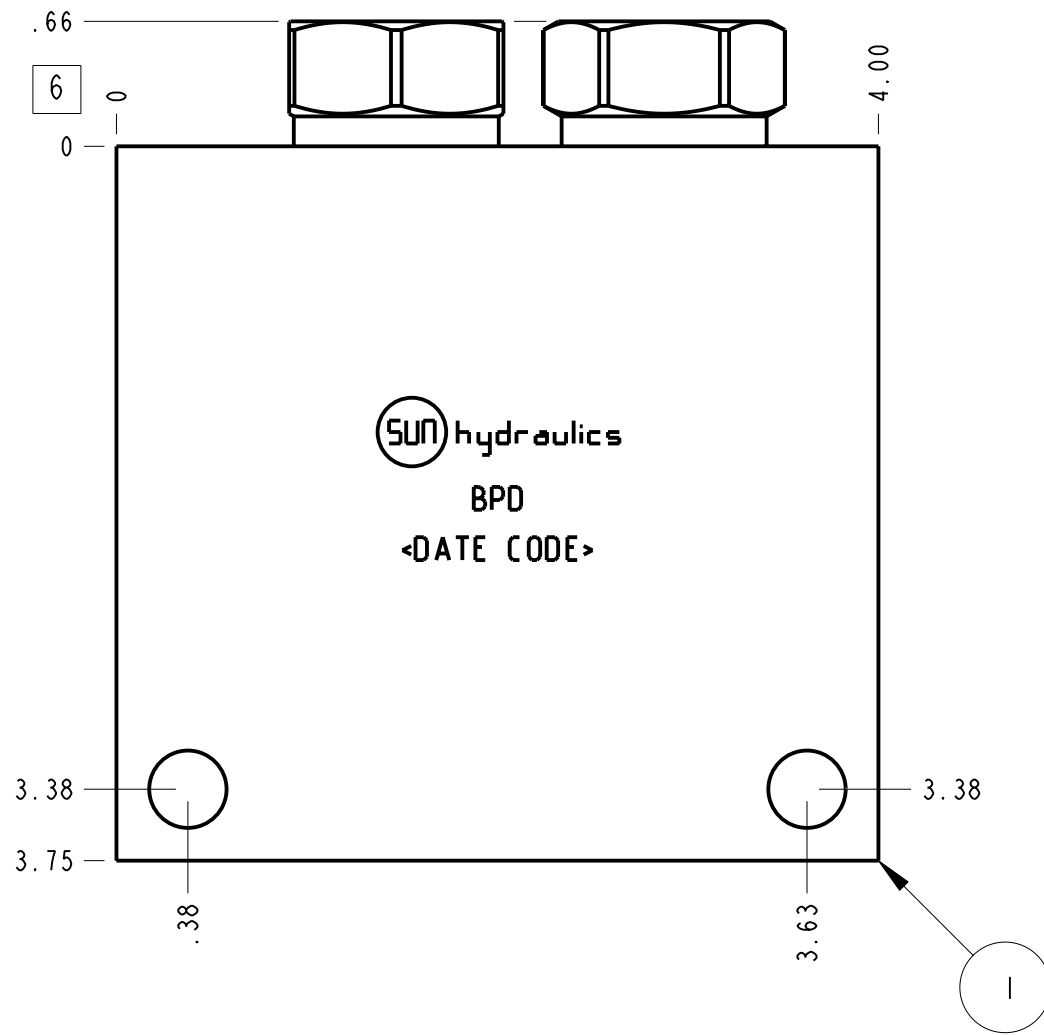
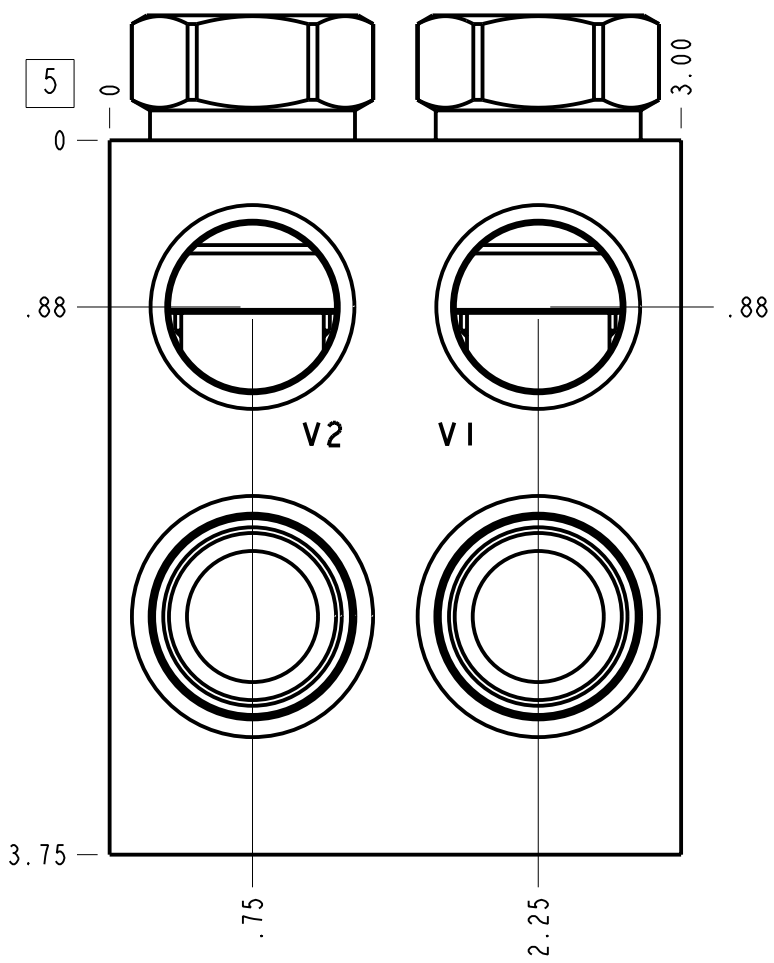


Technical Data	U.S. Units	Metric Units
Cavity	T-2A	
Body Features	Cushion lock with make up checks	
Body Type	Line mount	
Interface	None	
Open Cavity Quantity	2	
Weight	4.499 lb.	2,041 kg.
Mounting Hole Diameter	.41 in.	10,4 mm
Mounting Hole Depth	Through	
Mounting Hole Quantity	2	
Includes integral cartridge(s)	Yes (see Included Components)	



Notes

- Important: Carefully consider the maximum system pressure. The pressure rating of the manifold is dependent on the manifold material, with the port type/size a secondary consideration. Manifolds constructed of aluminum are not rated for pressures higher than 3000 psi (210 bar), regardless of the port type/size specified.
- This drawing is for reference only. It is generated by an automated process and does not fall under Sun's document control process.

Port Headings		
Product	Port	Size
BPD	Ports C1,C2,V1,V2	3/4" NPTF
BPD	Port T	3/4" NPTF

3	CXEDXAN		CHECK VALVE	2	
2	CXFA-XAN		CHECK VALVE	2	
1	150-053-002	6061-T6 ALUMINUM	BODY	1	
ITEM	PART NO.	SETTING	MATERIAL	PART NAME	QTY

MODEL		BPD		ALL DIMENSIONS IN INCH VIEWS ARE THIRD ANGLE		FIRST ANGLE		THIRD ANGLE	
DESCRIPTION		DATE	SCALE	DWG SIZE	SHEET				
T-2A Line mount Cushion lock with make up checks		Sep-03-24	0.992	C	1				