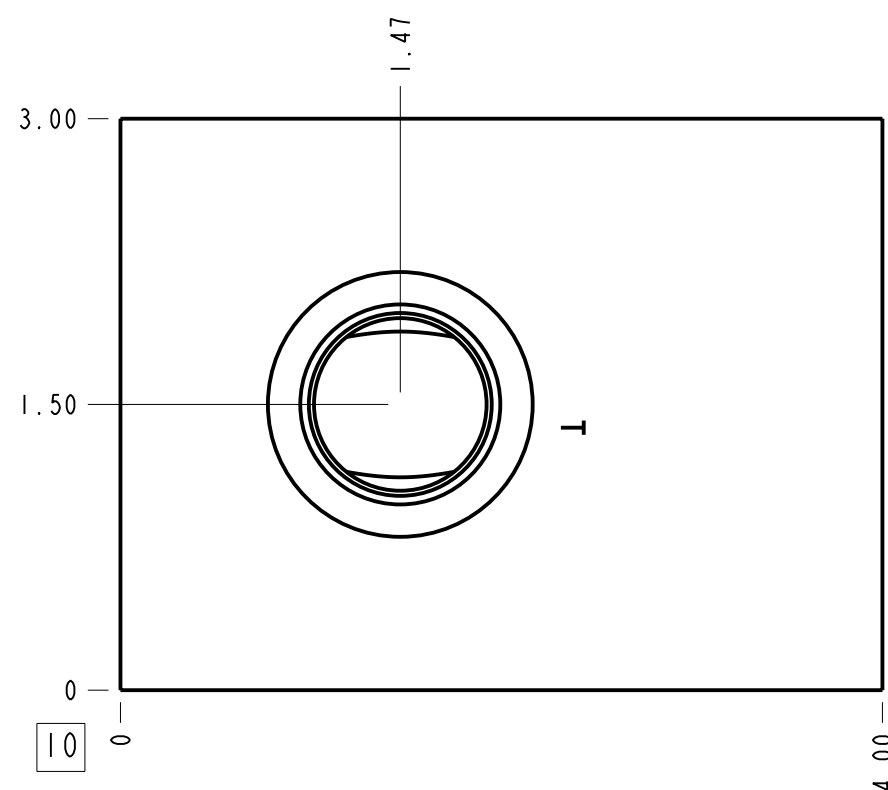
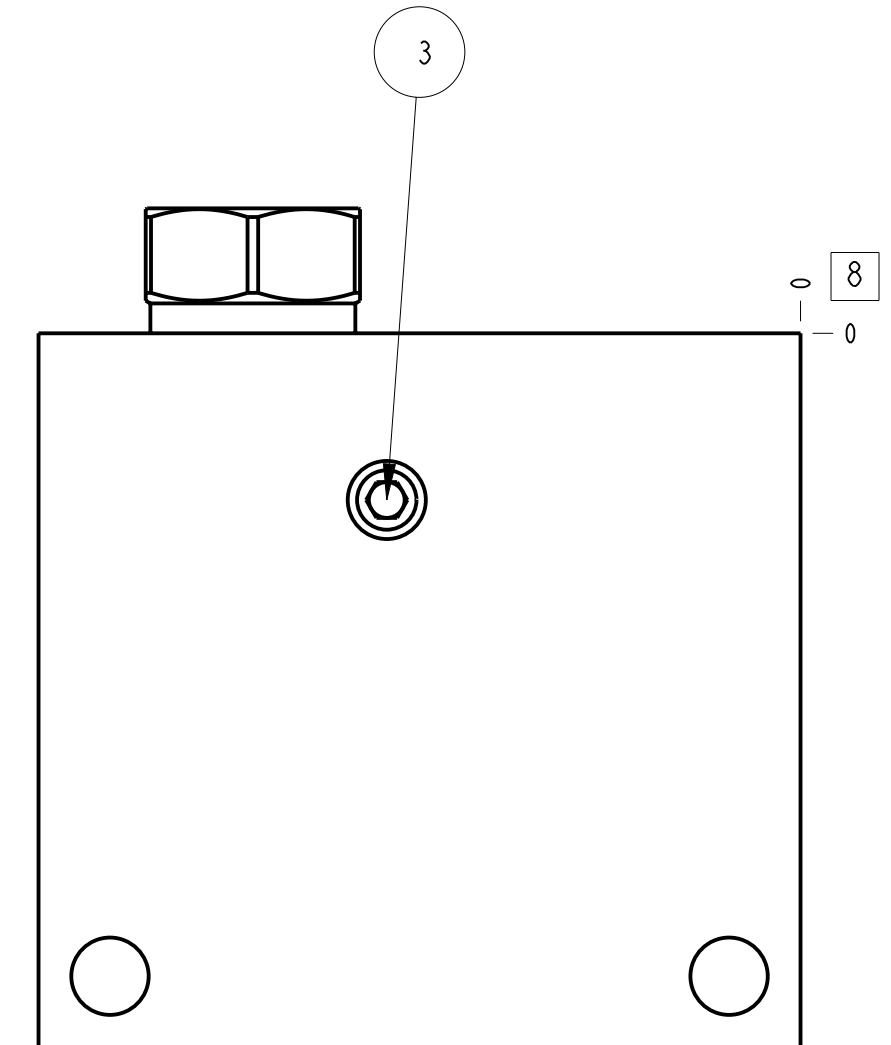
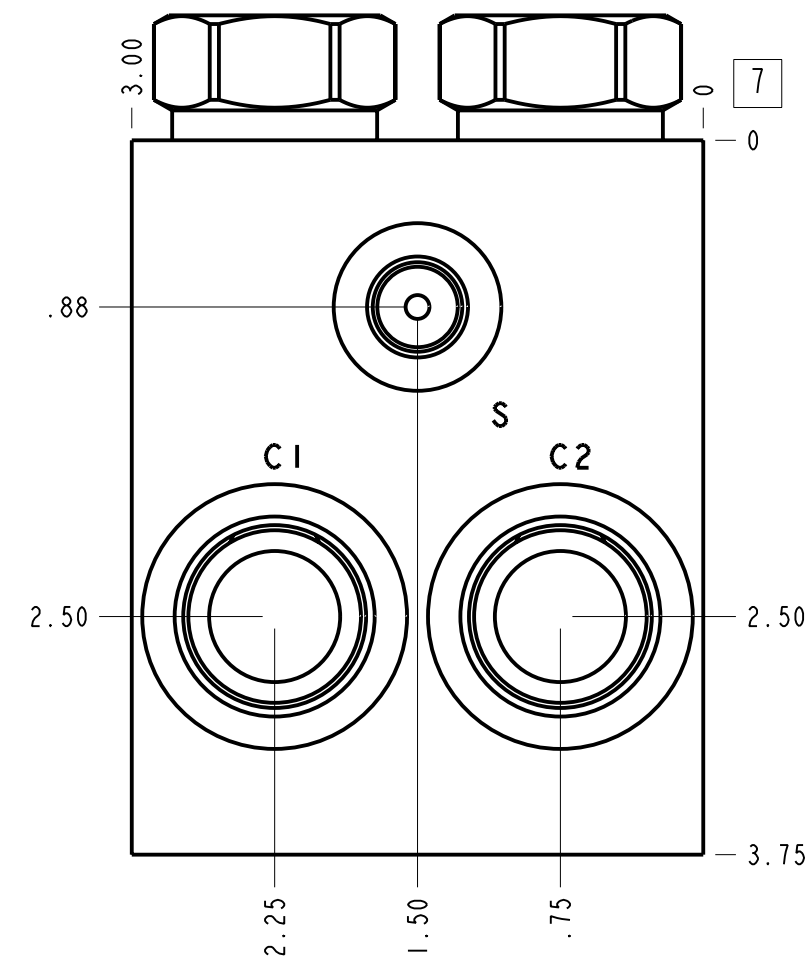
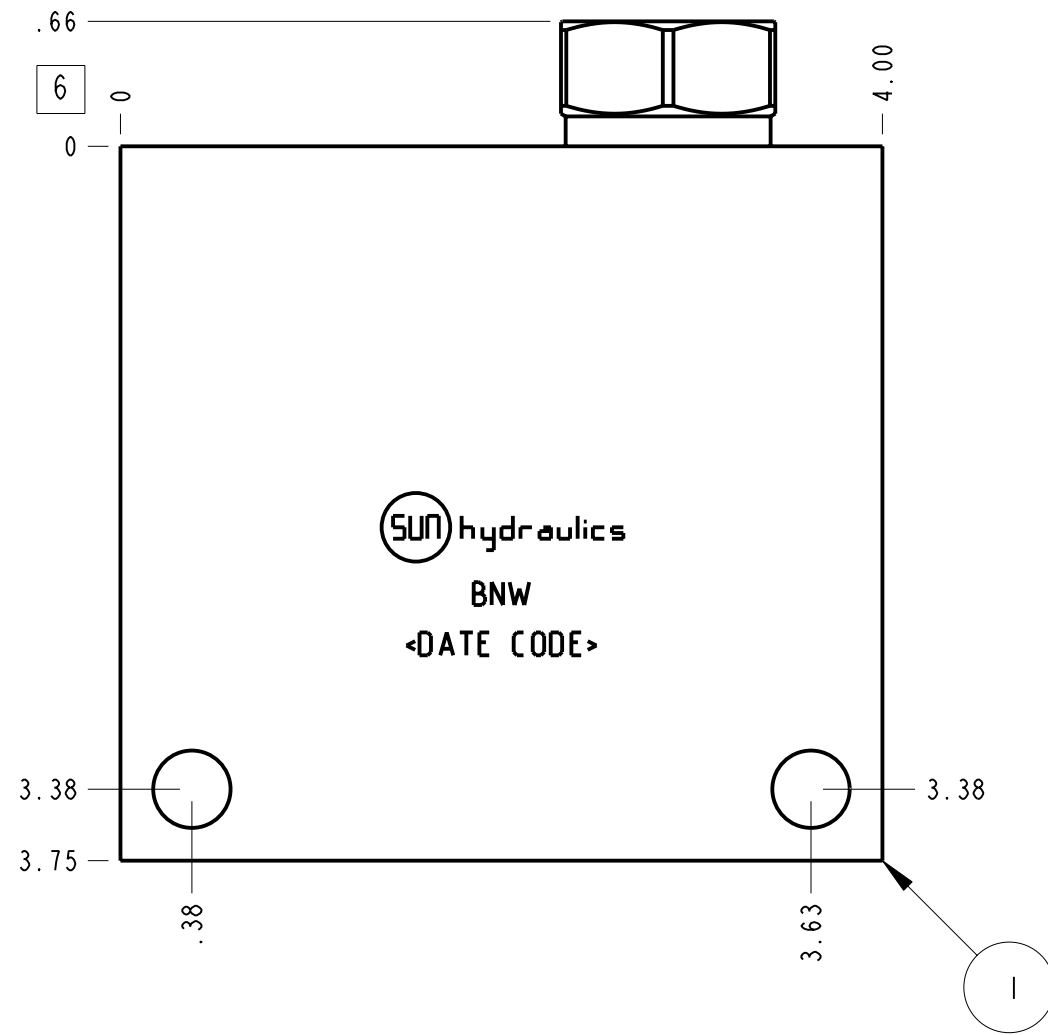
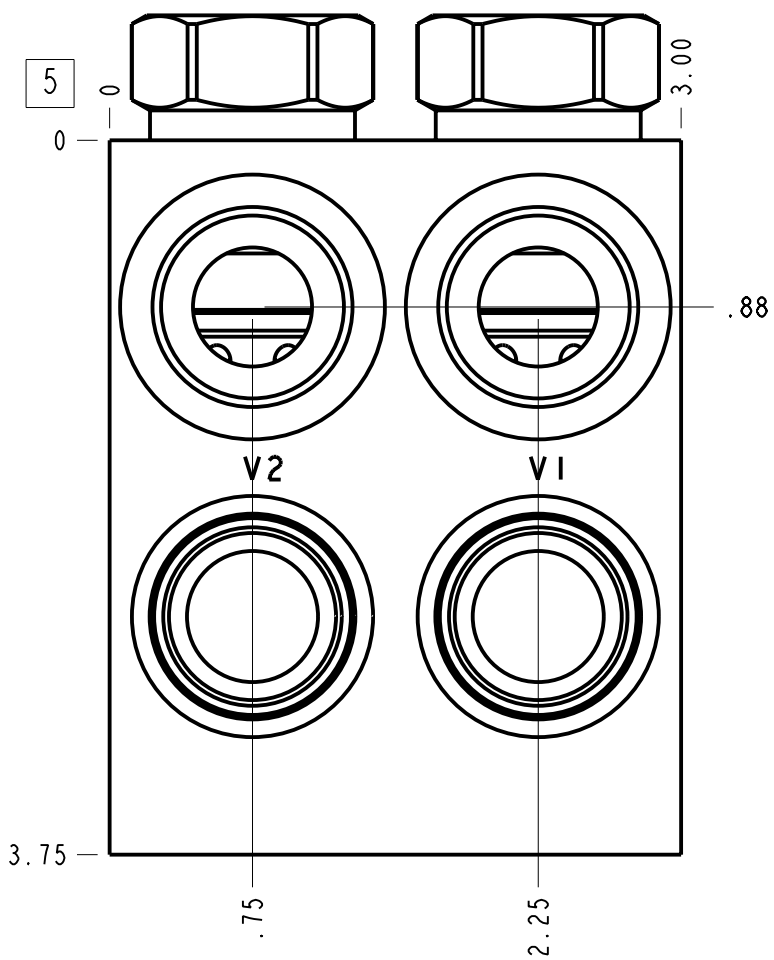


Technical Data	U.S. Units	Metric Units
Cavity	T-2A	
Body Features	Cushion lock with shuttle	
Body Type	Line mount	
Interface	None	
Open Cavity Quantity	2	
Weight	3.901 lb.	1,769 kg.
Mounting Hole Diameter	.41 in.	10,4 mm
Mounting Hole Quantity	2	
Includes integral cartridge(s)	Yes (see Included Components)	



Notes

1. Important: Carefully consider the maximum system pressure. The pressure rating of the manifold is dependent on the manifold material, with the port type/size a secondary consideration. Manifolds constructed of aluminum are not rated for pressures higher than 3000 psi (210 bar), regardless of the port type/size specified.
2. This drawing is for reference only. It is generated by an automated process and does not fall under Sun's document control process.
3. Items without balloons are shipped loose.

Port Headings		
Product	Port	Size
BNW	Ports C1, C2, V1, V2	3/4" BSPP
BNW	Port T	3/4" BSPP
BNW	Port S	1/4" BSPP

5	800-001-070			BALL	1
4	260-010			SEAT	1
3	340-002			PLUG-.125-27 NPTF	1
2	CXED-XCN			CHECK VALVE	2
1	150-234-008		6061-T6 ALUMINUM	BODY	1
ITEM	PART NO.	SETTING	MATERIAL	PART NAME	QTY

MODEL		BNW		ALL DIMENSIONS IN INCH VIEWS ARE THIRD ANGLE		FIRST ANGLE		THIRD ANGLE	
DESCRIPTION		DATE	SCALE	DWG SIZE	SHEET				
T-2A Line mount Cushion lock with shuttle		Feb-01-24	0.992	C	1				