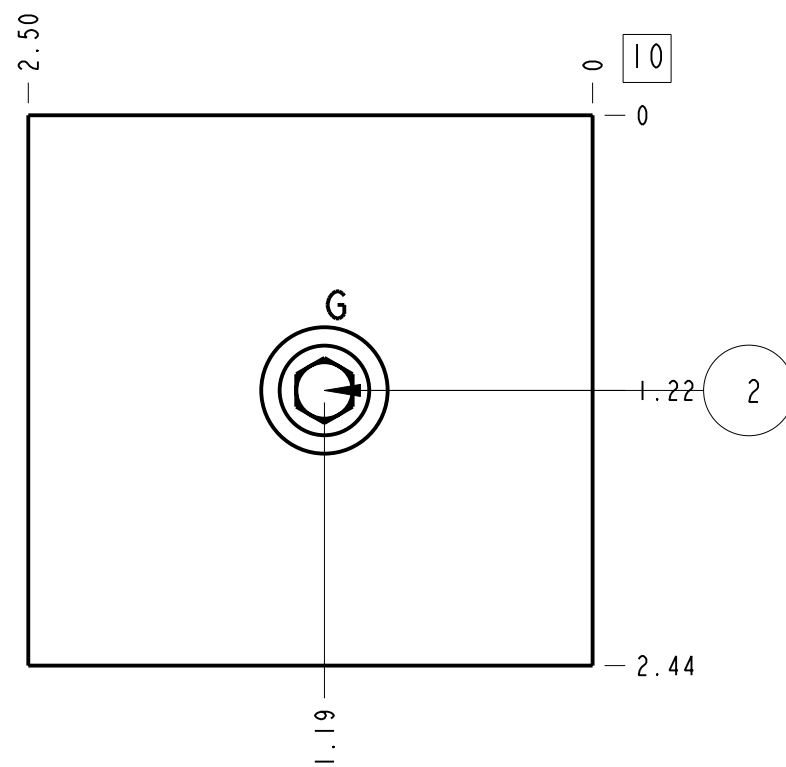
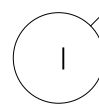
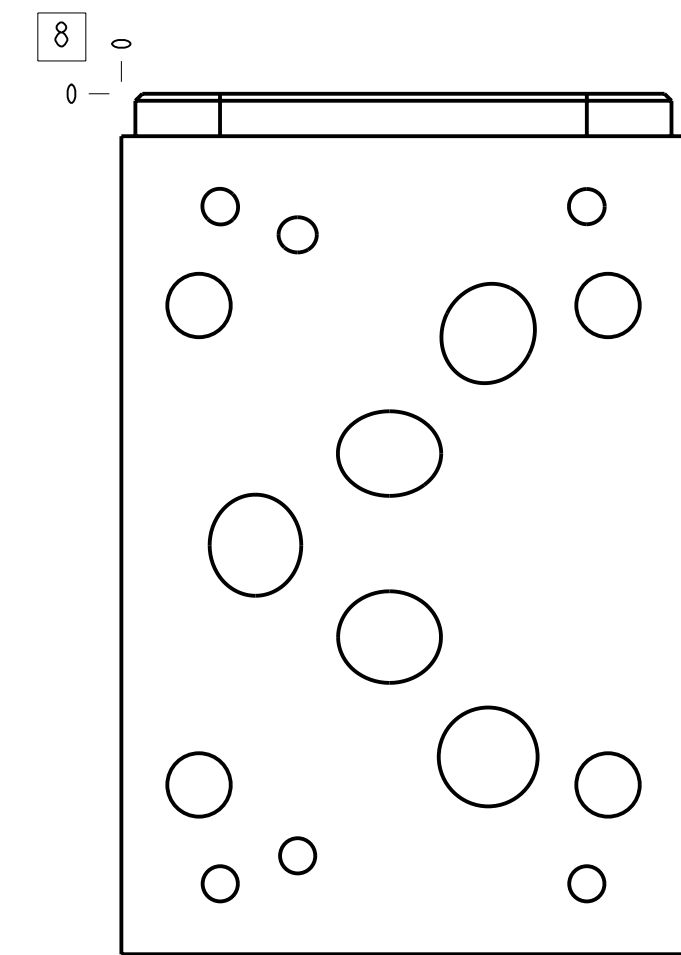
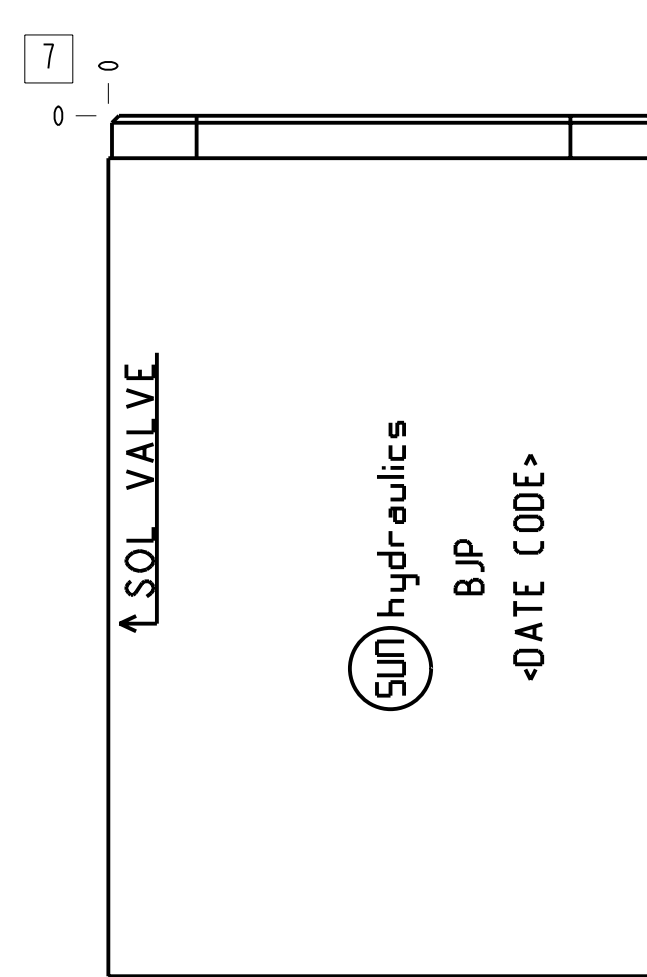
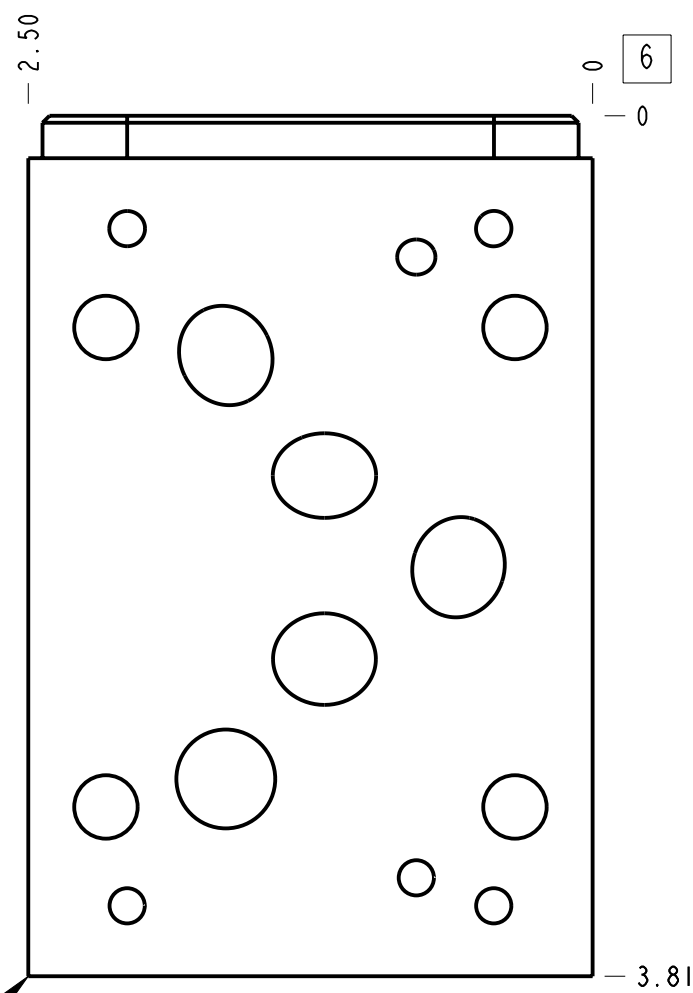
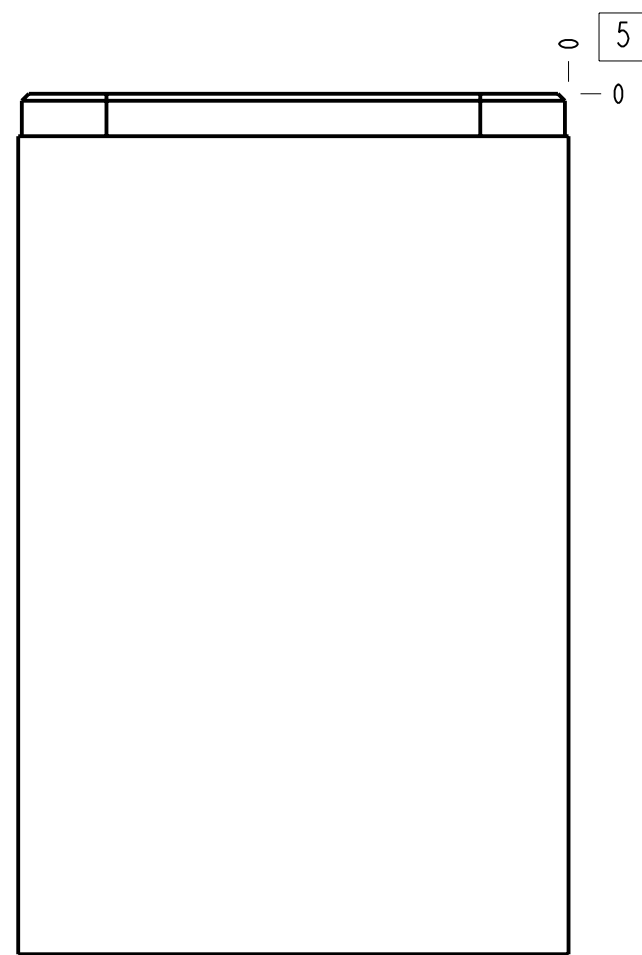
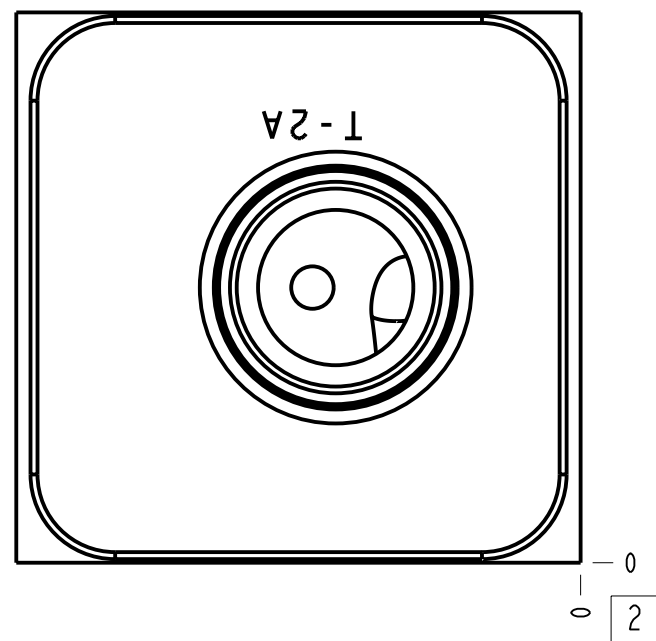
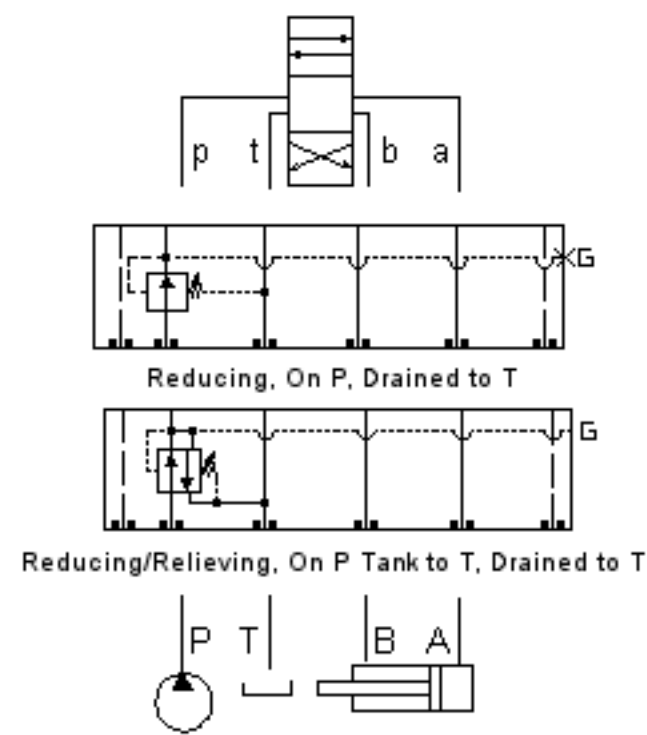


Technical Data	U.S. Units	Metric Units
Cavity	T-2A	
Body Features	On P, port 3 to T	
Body Type	Sandwich	
Interface	ISO 05 - X&Y	
Open Cavity Quantity	1	
Stack Height	2.49 in.	63 mm
Weight	1.823 lb.	0,827 kg.
Seal Plate Included (see notes)	No	

Related Accessories	
Part Number	Description
990-120-009	ISO 05 X and Y US sandwich manifold retainer and buna-N seal kit
990-120-010	ISO 05 X and Y US sandwich manifold retainer and Viton seal kit
990-120-011	ISO 05 X and Y Europe sandwich manifold retainer and Viton seal kit
990-120-012	ISO 05 X and Y Europe sandwich manifold retainer and buna-N seal kit



**Notes**

- Stack height value in technical data table includes seal retainer plate.
- This installation requires a retainer and seal kit which are purchased separately. See "Related Accessories" section.
- Important: Carefully consider the maximum system pressure. The pressure rating of the manifold is dependent on the manifold material, with the port type/size a secondary consideration. Manifolds constructed of aluminum are not rated for pressures higher than 3000 psi (210 bar), regardless of the port type/size specified.
- This drawing is for reference only. It is generated by an automated process and does not fall under Sun's document control process.

Port Headings		
Product	Port	Size
BJP	Gage Port (Plugged)	1/4" NPTF

2	340-003			PLUG-.250-18 NPTF	1	
1	150-705-001		6061-T6 ALUMINUM	BODY	1	
ITEM	PART NO.	SETTING	MATERIAL	PART NAME	QTY	
	MODEL			BJP	ALL DIMENSIONS IN INCH VIEWS ARE THIRD ANGLE	
DESCRIPTION			DATE	SCALE	DWG SIZE	SHEET
T-2A Sandwich ISO 05 - X&Y On P, port 3 to T			Jun-03-24	1.176	C	1

