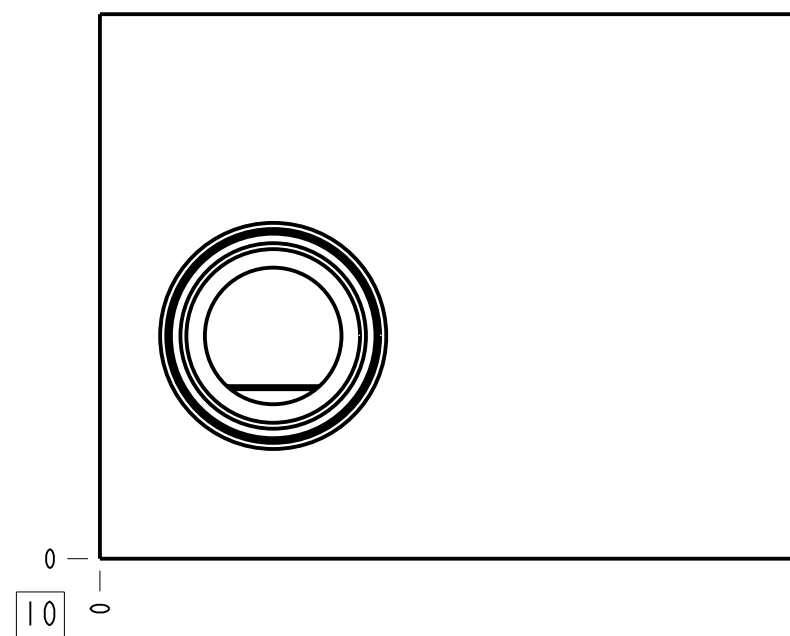
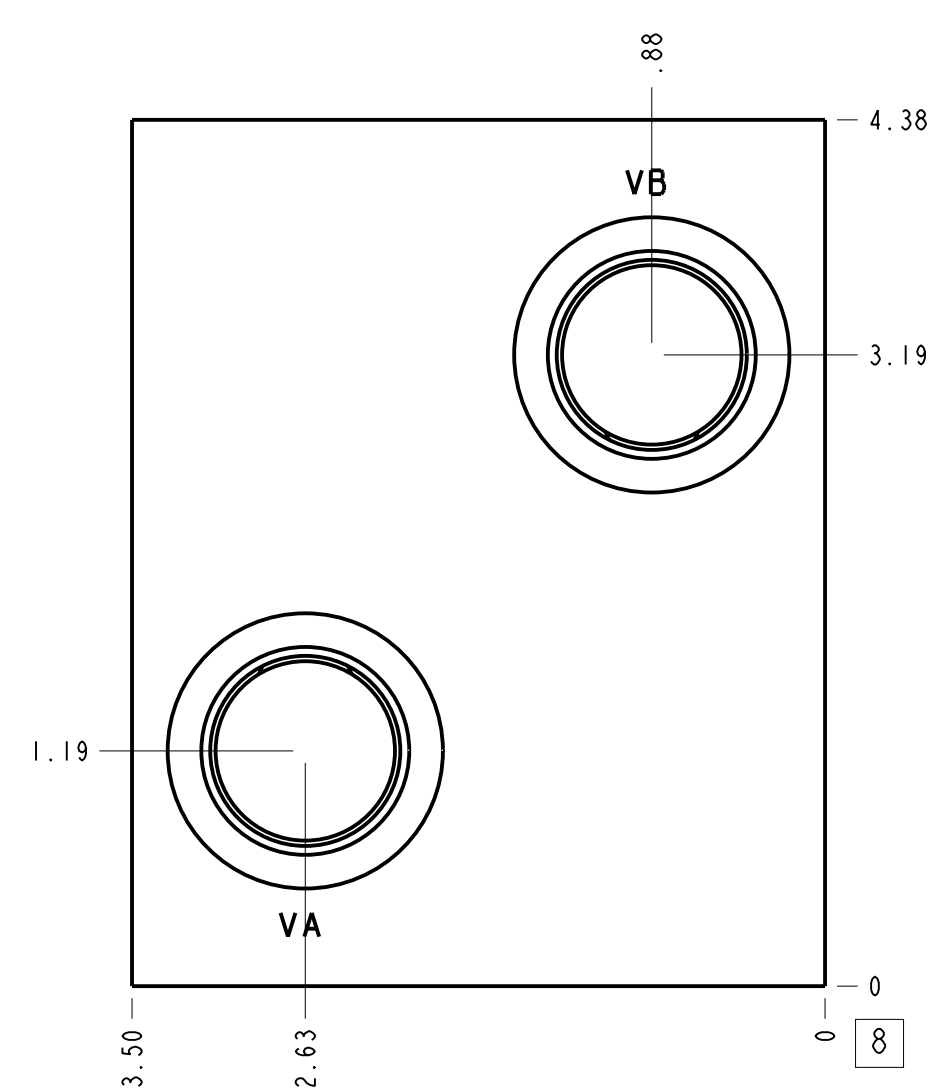
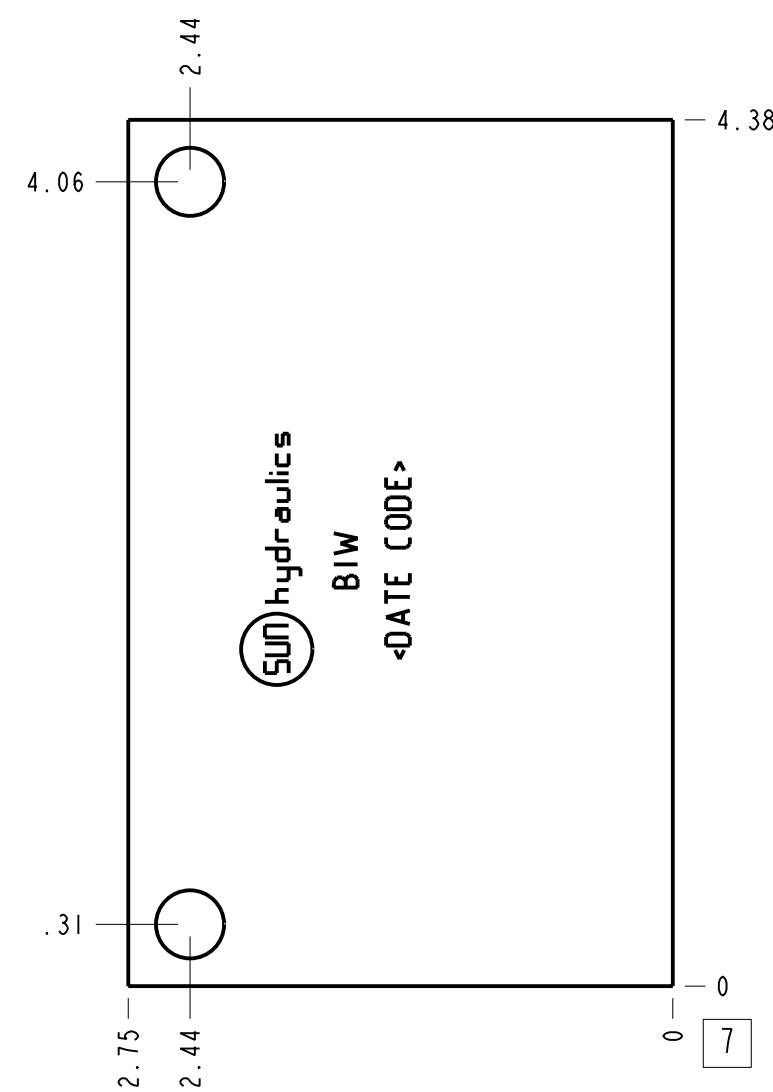
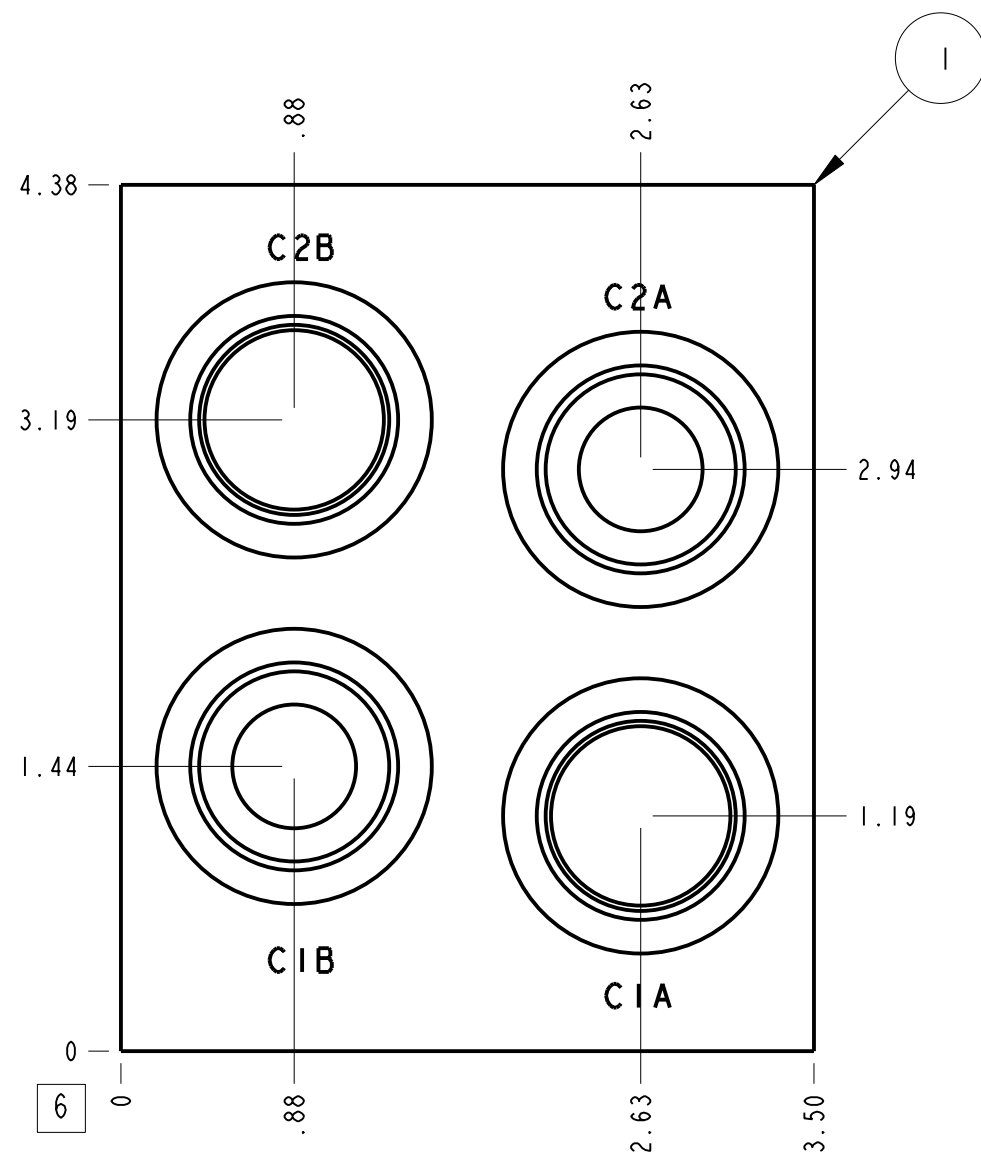
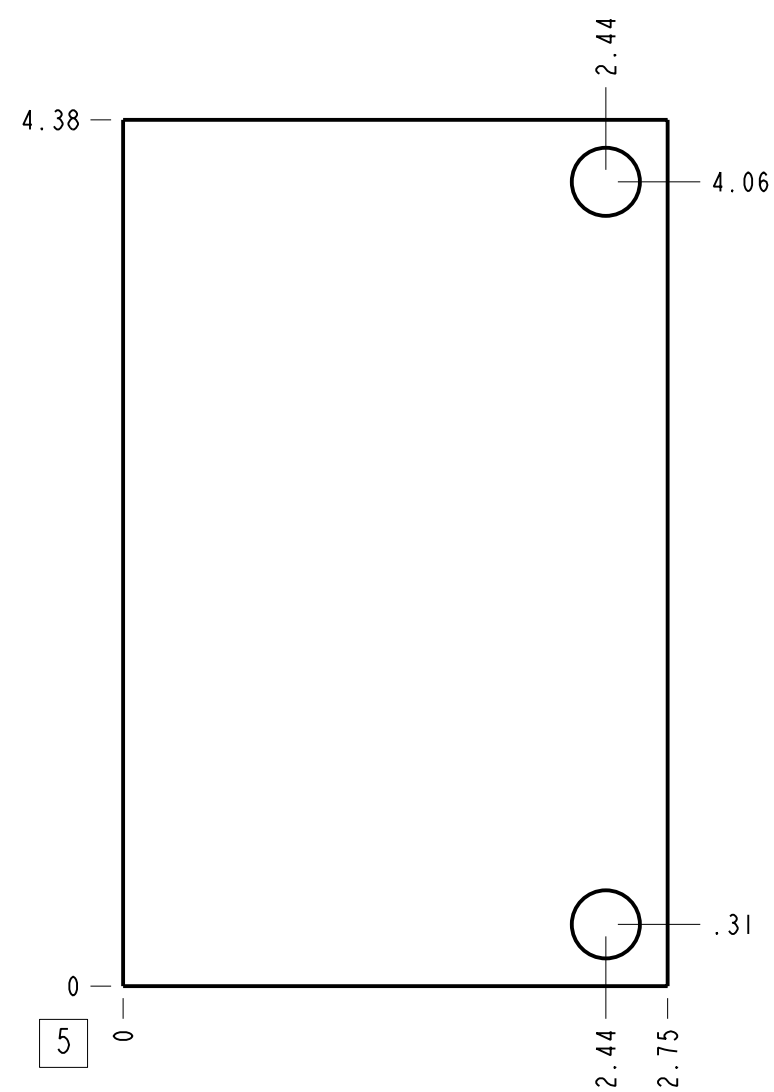
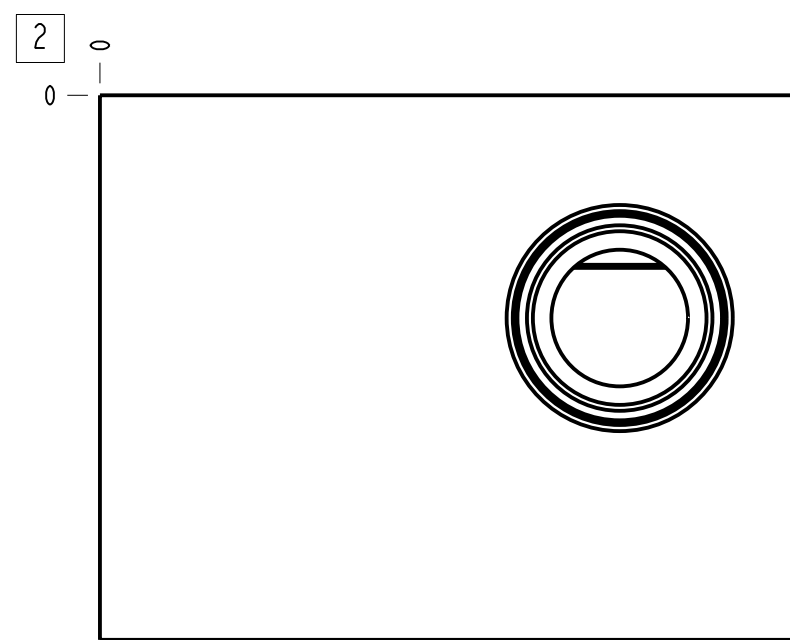


| Technical Data         | U.S. Units                         | Metric Units |
|------------------------|------------------------------------|--------------|
| Cavity                 | T-2A                               |              |
| Body Features          | 2 cylinder sequence, direct acting |              |
| Body Type              | Line mount                         |              |
| Interface              | None                               |              |
| Open Cavity Quantity   | 2                                  |              |
| Weight                 | 3.144 lb.                          | 1,426 kg.    |
| Mounting Hole Diameter | .34 in.                            | 8.6 mm       |
| Mounting Hole Depth    | Through                            |              |
| Mounting Hole Quantity | 2                                  |              |



**Notes**

- Important: Carefully consider the maximum system pressure. The pressure rating of the manifold is dependent on the manifold material, with the port type/size a secondary consideration. Manifolds constructed of aluminum are not rated for pressures higher than 3000 psi (210 bar), regardless of the port type/size specified.
- This drawing is for reference only. It is generated by an automated process and does not fall under Sun's document control process.

| Port Headings |           |           |
|---------------|-----------|-----------|
| Product       | Port      | Size      |
| BIW           | All Ports | 3/4" BSPP |

|             |   |  |       |                |
|-------------|---|--|-------|----------------|
| ITEM        | 153-767-009   | 6061-T6 ALUMINUM                             | BODY  | QTY            |
| MODEL       | BIW   | ALL DIMENSIONS IN INCH VIEWS ARE THIRD ANGLE |       |                |
| DESCRIPTION | T-2A Line mount<br>2 cylinder sequence, direct acting | DATE   | SCALE | DWG SIZE SHEET |
|             |   | Aug-02-24                                    | 1.031 | C I            |

