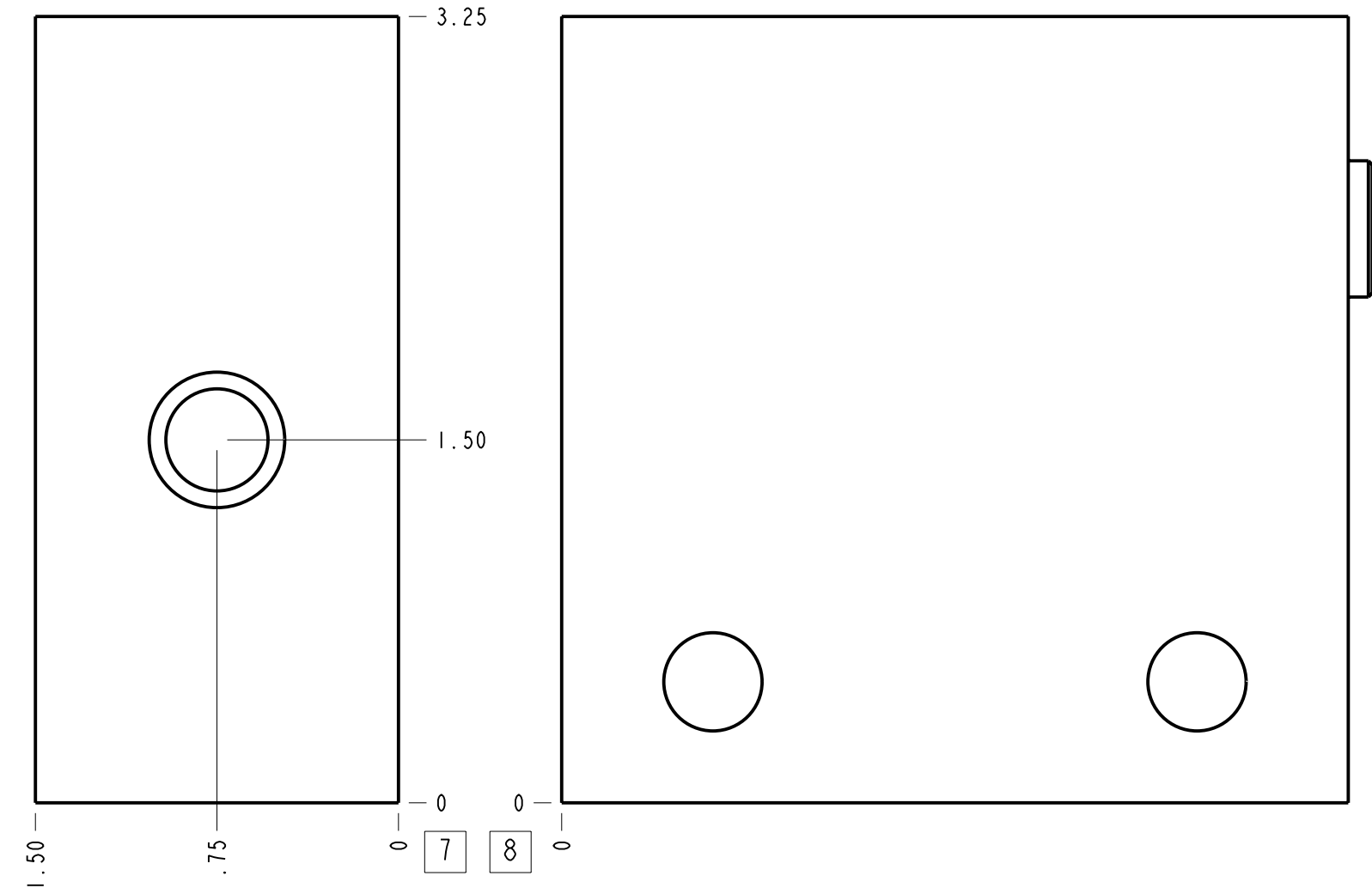
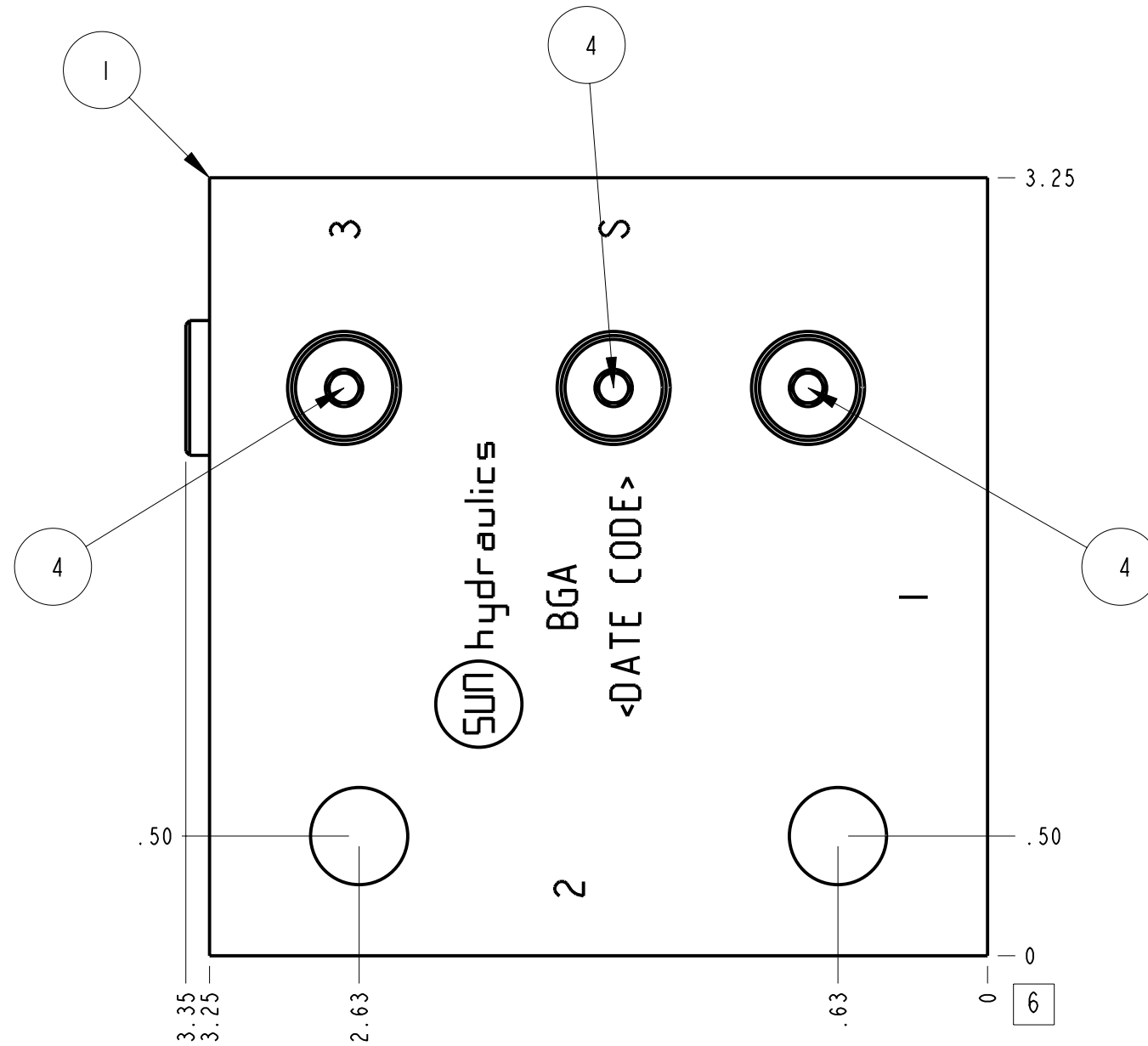
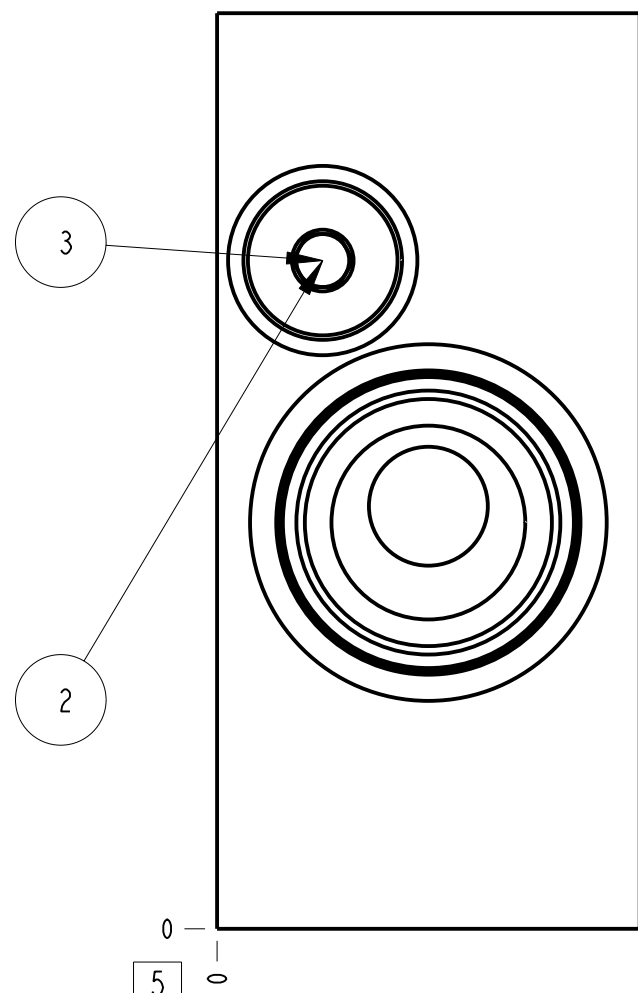
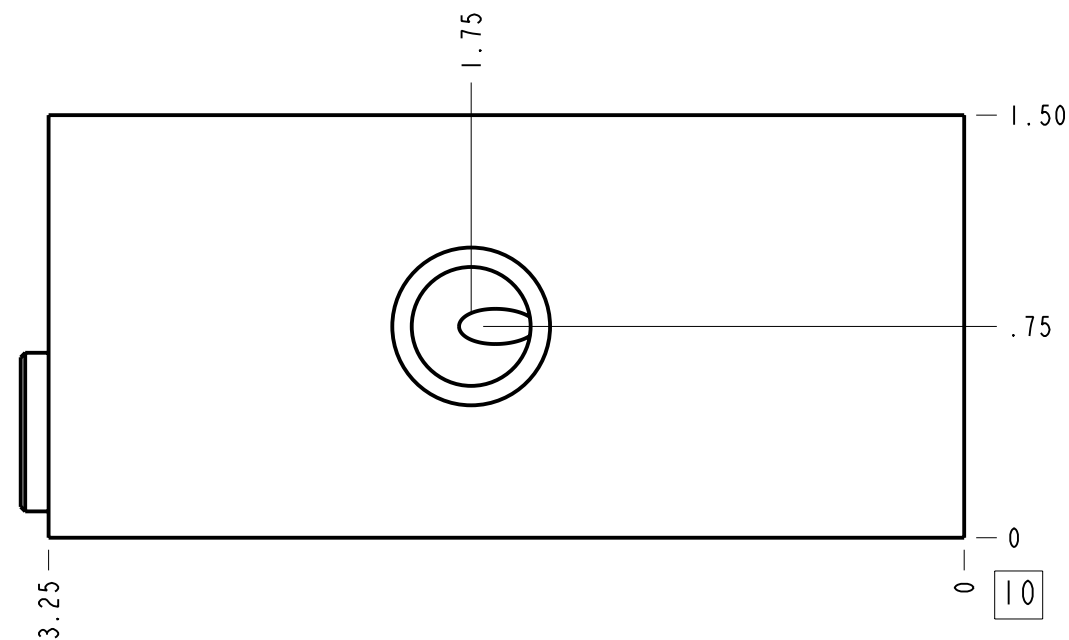


Technical Data	U.S. Units	Metric Units
Cavity	T-2A	
Body Features	Ninety degree with shuttle	
Body Type	Line mount	
Interface	None	
Open Cavity Quantity	1	
Weight	1.331 lb.	0,604 kg.
Maximum Operating Pressure - 6061-T651 Aluminum	3000 psi	210 bar
Maximum Operating Pressure - 65-45-12 Ductile Iron	5000 psi	350 bar
Mounting Hole Diameter	.41 in.	10,4 mm
Mounting Hole Depth	Through	
Mounting Hole Quantity	2	
Includes integral cartridge(s)	Yes (see Included Components)	



**Notes**

- Important: Carefully consider the maximum system pressure. The pressure rating of the manifold is dependent on the manifold material, with the port type/size a secondary consideration. Manifolds constructed of aluminum are not rated for pressures higher than 3000 psi (210 bar), regardless of the port type/size specified.
- This drawing is for reference only. It is generated by an automated process and does not fall under Sun's document control process.



Port Headings		
Product	Port	Size
BGA	Ports 1 & 2	1/4" NPTF
BGA	Ports 3 & S	1/4" NPTF

4	A330-006-002		SAE-2 PLUG	3	
3	A330-006-004		SAE-4 PLUG	1	
2	CSZNXXN		SHUTTLE VALVE	1	
1	150-252-001	6061-T6 ALUMINUM	BODY	1	
ITEM	PART NO.	SETTING	MATERIAL	PART NAME	QTY

MODEL	BGA	ALL DIMENSIONS IN INCH VIEWS ARE THIRD ANGLE	FIRST ANGLE	THIRD ANGLE	
DESCRIPTION	T-2A Line mount Ninety degree with shuttle	DATE	SCALE	DWG SIZE	SHEET
		Aug-02-24	1.467	C	1