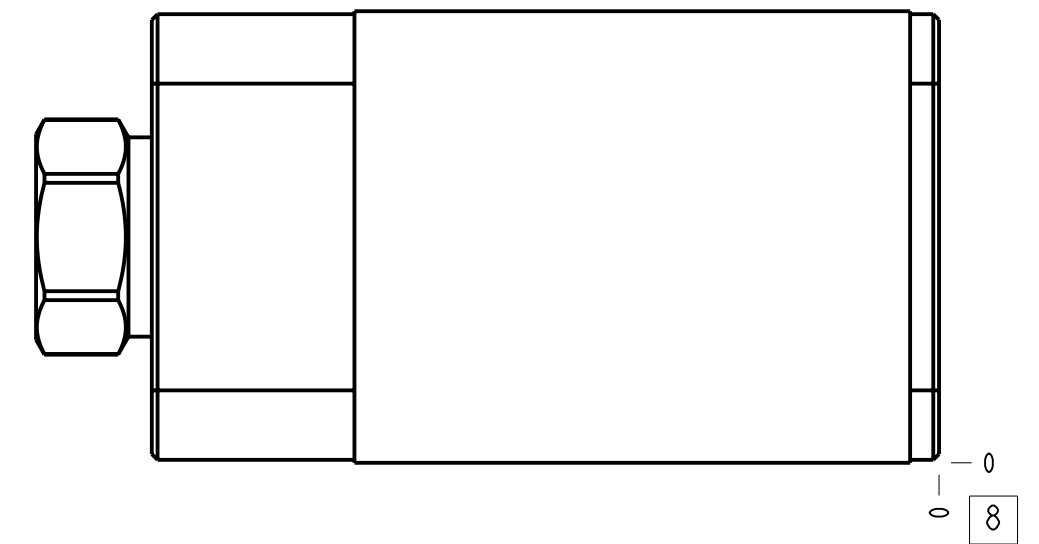
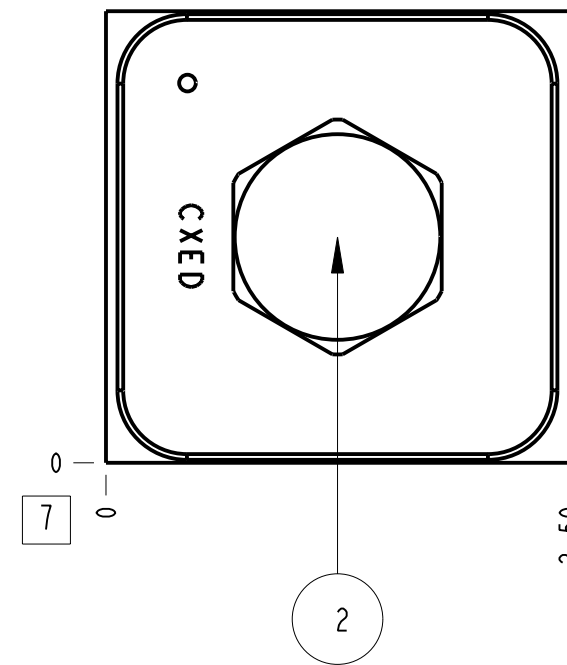
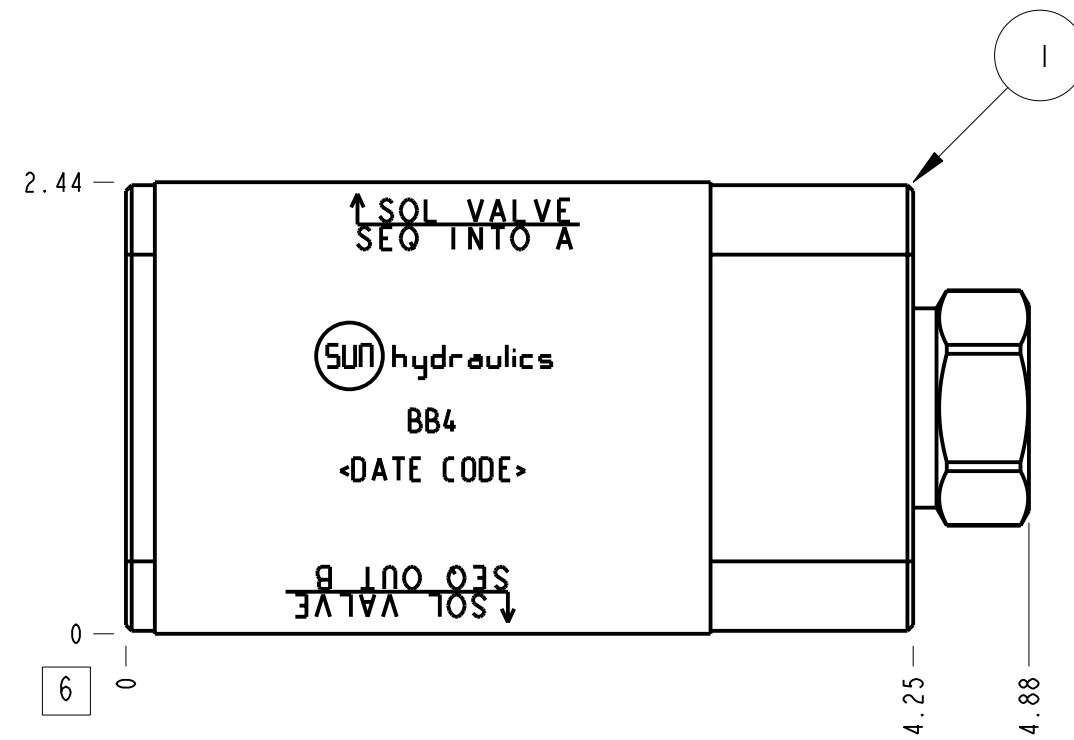
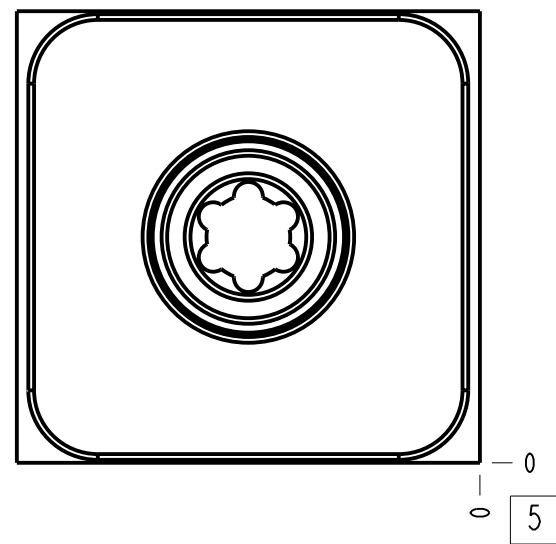
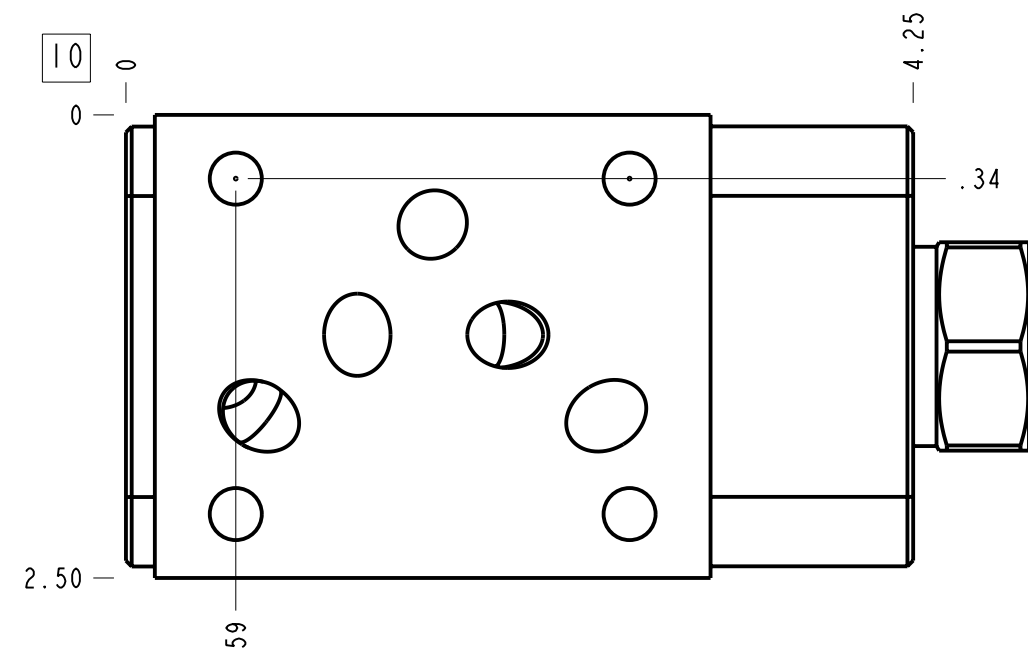


Technical Data	U.S. Units	Metric Units
Cavity	T-2A	
Body Features	Sequence into A or out of B with reverse flow check	
Body Type	Sandwich	
Interface	ISO 05	
Open Cavity Quantity	1	
Stack Height	2.49 in.	63 mm
Weight	2.404 lb.	1,090 kg.
Seal Plate Included (see notes)	Yes	
Includes integral cartridge(s)	Yes (see Included Components)	



Notes

- Stack height value in technical data table includes seal retainer plate.
- Important: Carefully consider the maximum system pressure. The pressure rating of the manifold is dependent on the manifold material, with the port type/size a secondary consideration. Manifolds constructed of aluminum are not rated for pressures higher than 3000 psi (210 bar), regardless of the port type/size specified.
- This drawing is for reference only. It is generated by an automated process and does not fall under Sun's document control process.
- Items without balloons are shipped loose.



4	700-001			SEAL PLATE	1
3	500-001-014			O-RING	5
2	CXEDXAN			CHECK VALVE	1
1	150-378		6061-T6 ALUMINUM	BODY	1
ITEM	PART NO.	SETTING	MATERIAL	PART NAME	QTY

MODEL		BB4		ALL DIMENSIONS IN INCH VIEWS ARE THIRD ANGLE		FIRST ANGLE		THIRD ANGLE	
DESCRIPTION		T-2A Sandwich ISO 05 (See Technical Data for Body Features)		DATE	SCALE	DWG SIZE	SHEET		
				Jul-27-23	0.965	C	1		