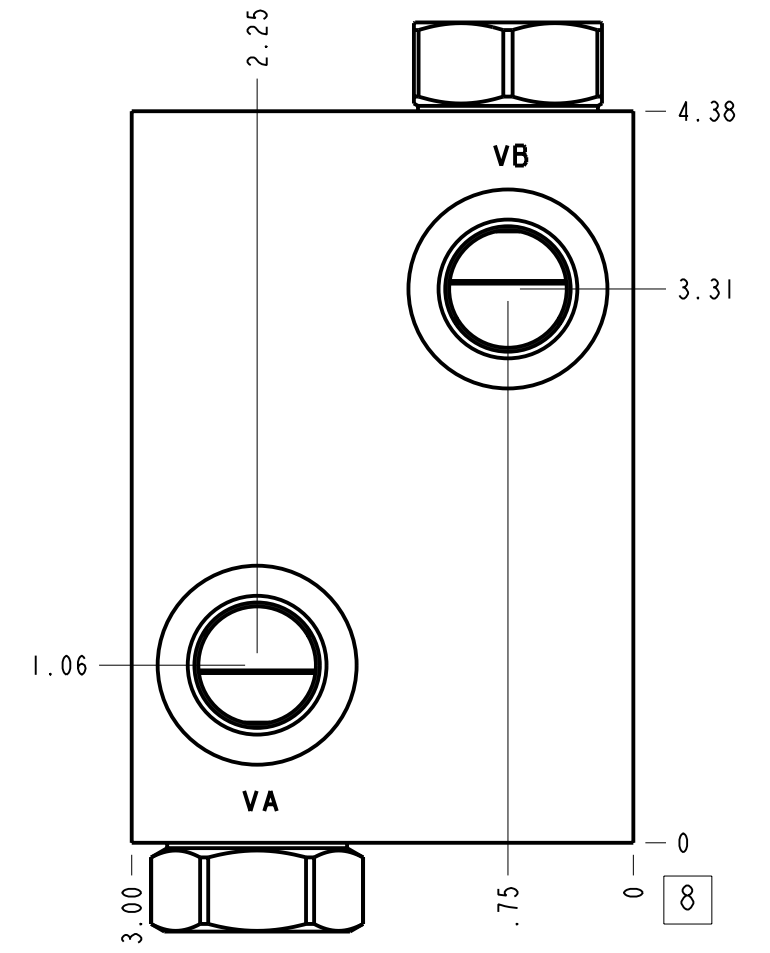
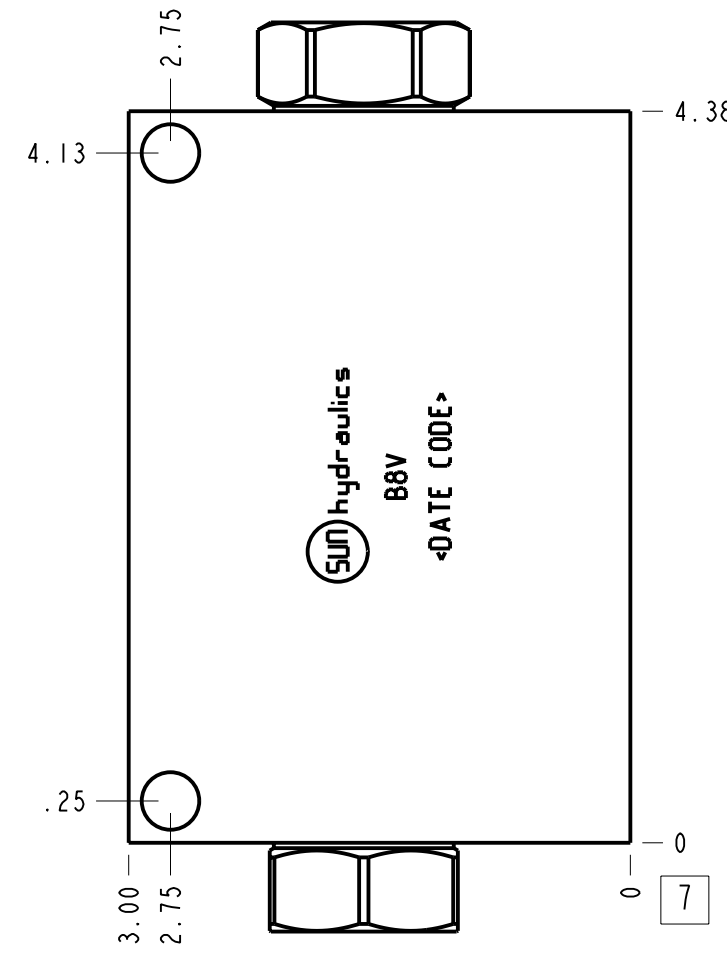
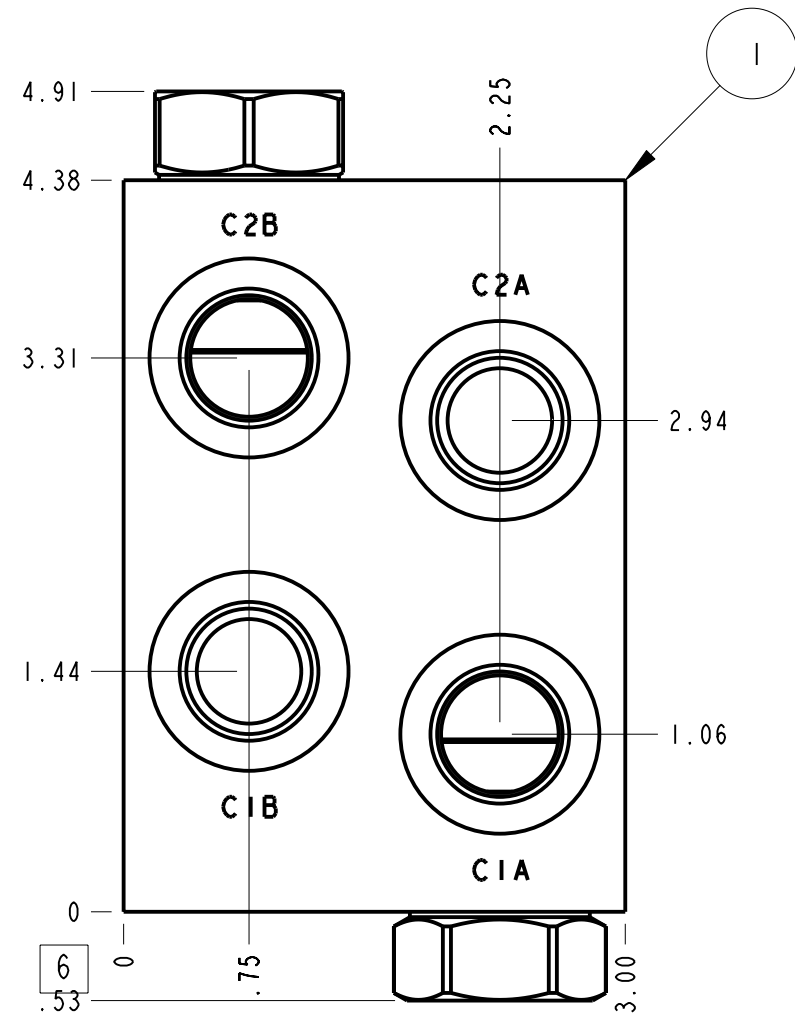
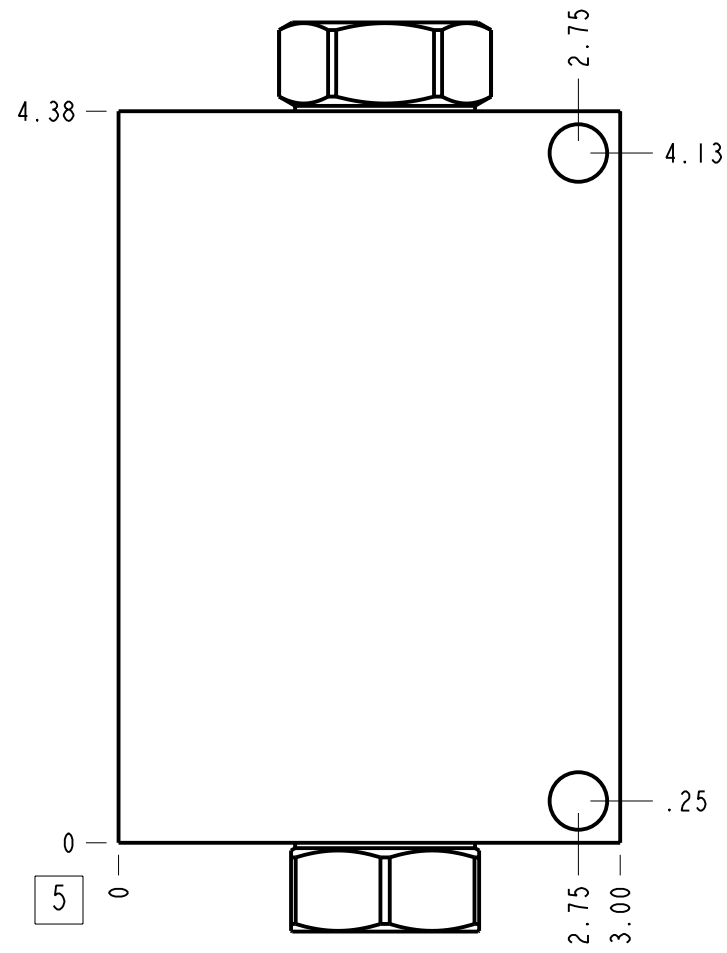
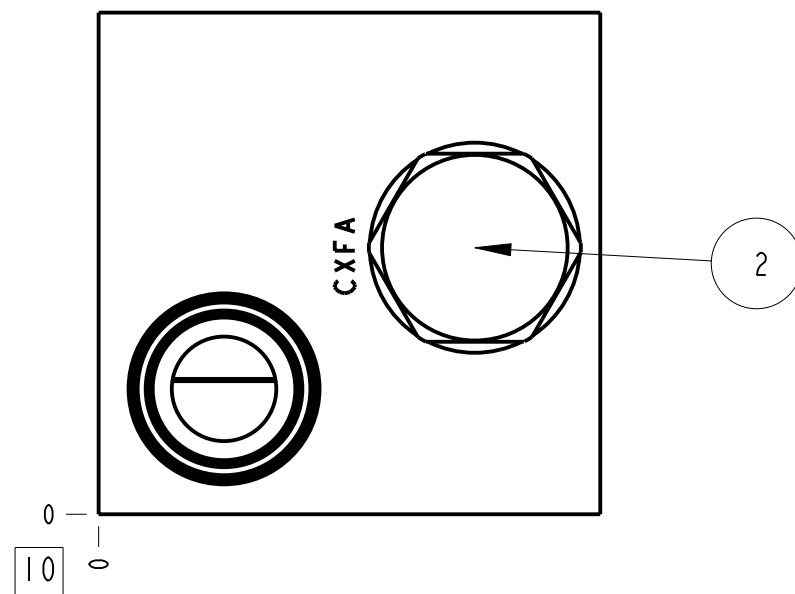


Technical Data	U.S. Units	Metric Units
Cavity	T-2A	
Body Features	2 cylinder sequence, with reverse checks	
Body Type	Line mount	
Interface	None	
Open Cavity Quantity	2	
Weight	3.622 lb.	1,643 kg.
Mounting Hole Diameter	.34 in.	8.6 mm
Mounting Hole Depth	Through	
Mounting Hole Quantity	2	
Includes integral cartridge(s)	Yes (see Included Components)	



Notes

- Important: Carefully consider the maximum system pressure. The pressure rating of the manifold is dependent on the manifold material, with the port type/size a secondary consideration. Manifolds constructed of aluminum are not rated for pressures higher than 3000 psi (210 bar), regardless of the port type/size specified.
- This drawing is for reference only. It is generated by an automated process and does not fall under Sun's document control process.



Port Headings		
Product	Port	Size
B8V	All Ports	1/2" BSPP

2	CXFA-XCN		CHECK VALVE	2	
1	150-054-007		6061-T6 ALUMINUM	BODY	1
ITEM	PART NO.	SETTING	MATERIAL	PART NAME	QTY
MODEL	B8V		ALL DIMENSIONS IN INCH VIEWS ARE THIRD ANGLE		
DESCRIPTION	T-2A Line mount 2 cylinder sequence, with reverse checks		DATE	SCALE	DWG SIZE SHEET
			Aug-02-24	0.871	C 1

