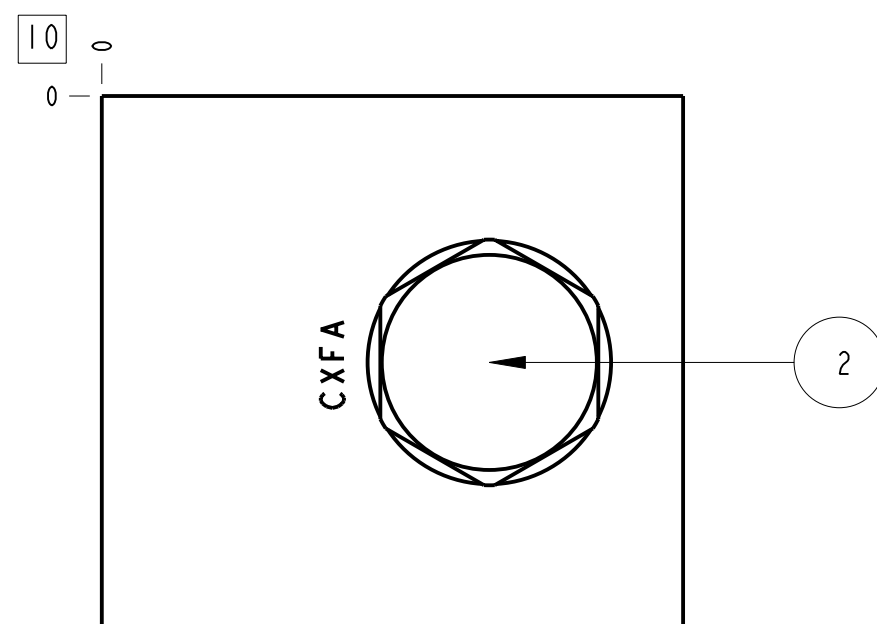
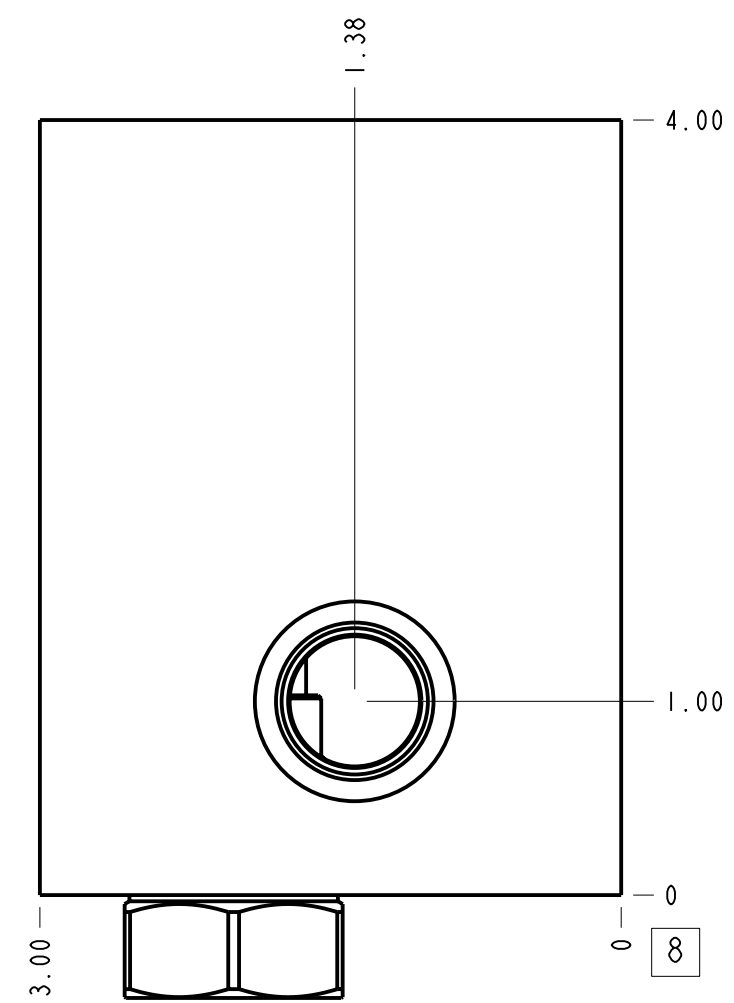
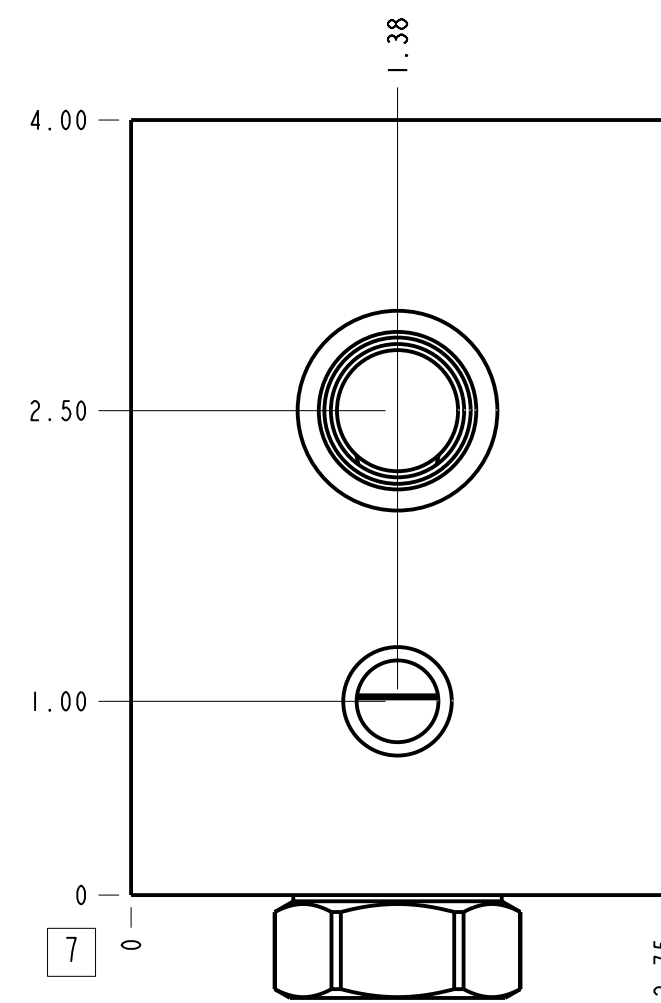
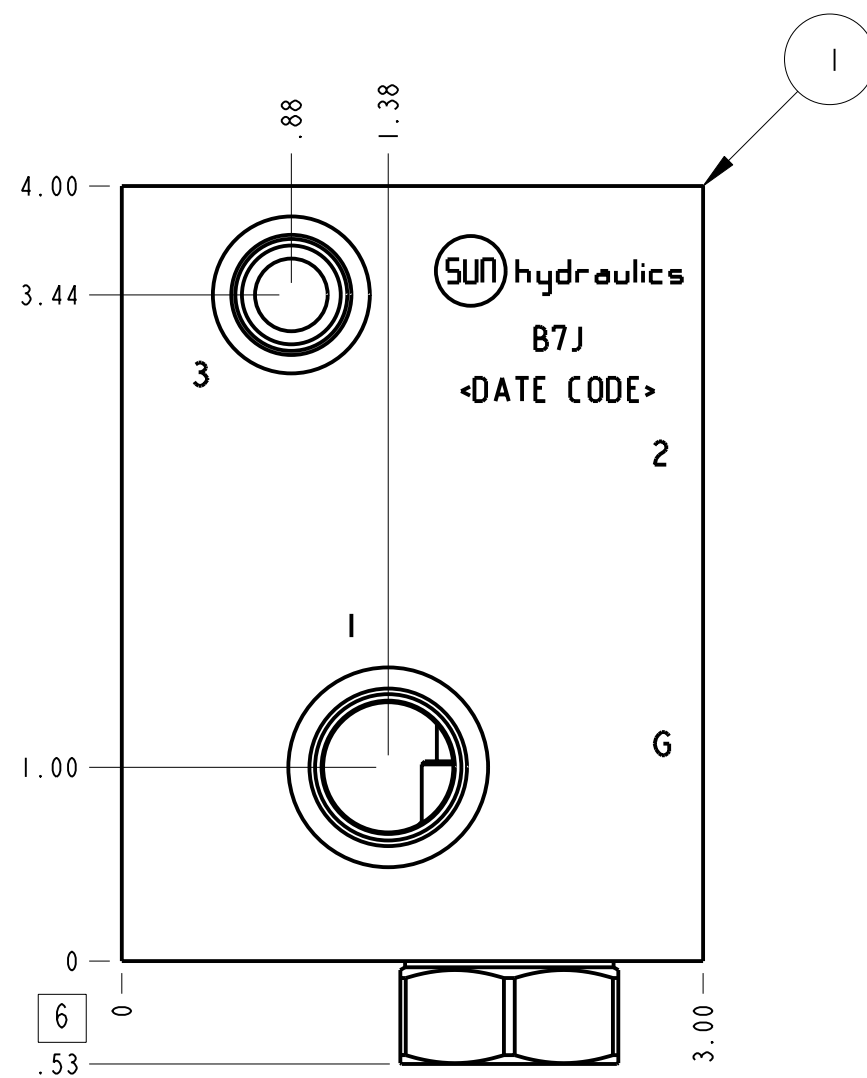
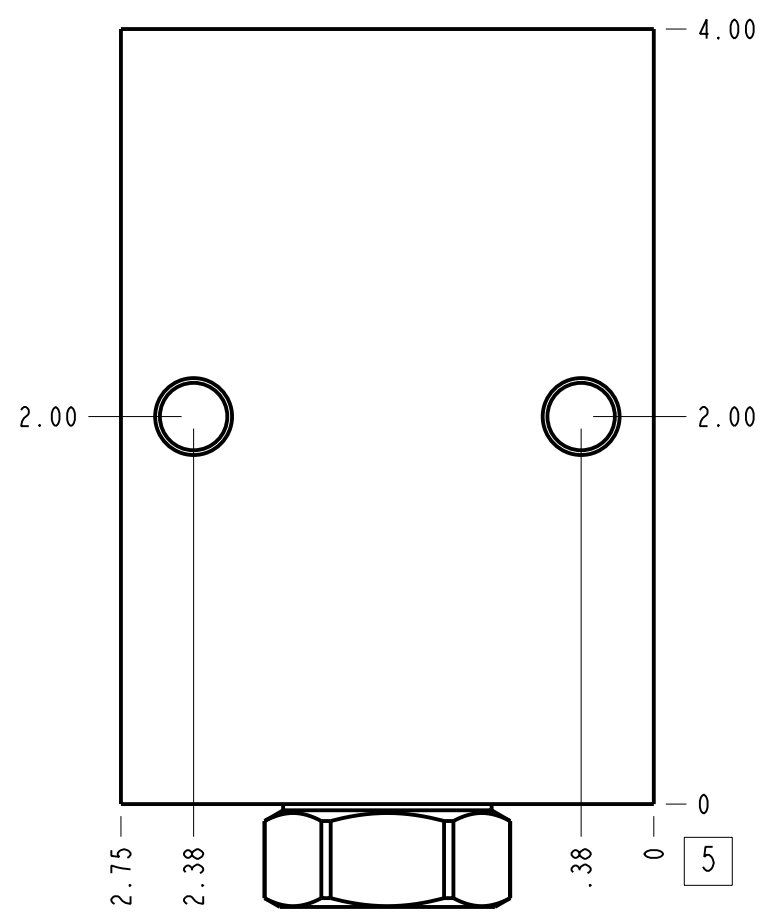
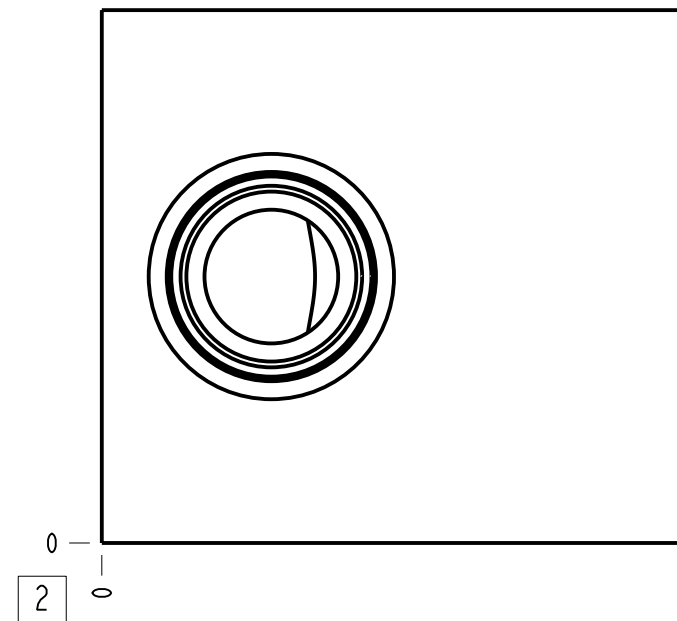


Technical Data	U.S. Units	Metric Units
Cavity	T-2A	
Body Features	Through port 1 with reverse flow check	
Body Type	Line mount	
Interface	None	
Open Cavity Quantity	1	
Weight	3.096 lb.	1,404 kg.
Mounting Hole Thread	.375-16 UNC - 2B in.	
Mounting Hole Depth	.62 in.	15,7 mm
Mounting Hole Quantity	2	
Includes integral cartridge(s)	Yes (see Included Components)	
PDF Drawing	PDF Drawing	



**Notes**

- Important: Carefully consider the maximum system pressure. The pressure rating of the manifold is dependent on the manifold material, with the port type/size a secondary consideration. Manifolds constructed of aluminum are not rated for pressures higher than 3000 psi (210 bar), regardless of the port type/size specified.
- This drawing is for reference only. It is generated by an automated process and does not fall under Sun's document control process.

Port Headings		
Product	Port	Size
B7J	Ports 1 & 2	SAE 8
B7J	Port 3	SAE 6
B7J	Gage Port	1/4" NPTF
B7J	Mounting Holes	375 - 16UNC x .62 DP

2	CXFA-XCN		CHECK VALVE	1		
1	151-088-004		BODY	1		
ITEM	PART NO.	SETTING	MATERIAL	PART NAME	QTY	
	MODEL		B7J	ALL DIMENSIONS IN INCH VIEWS ARE THIRD ANGLE		
DESCRIPTION		T-2A Line mount Through port 1 with reverse flow check	DATE	SCALE	DWG SIZE	SHEET
		Apr-13-23	1.009	C	1	

