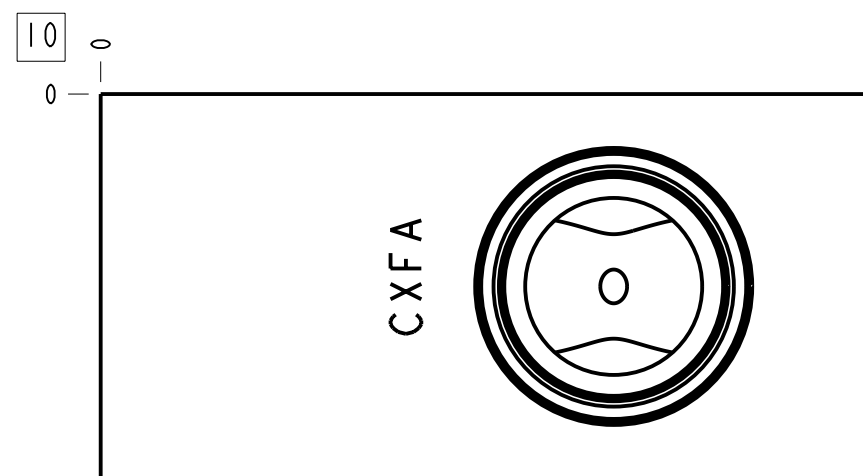
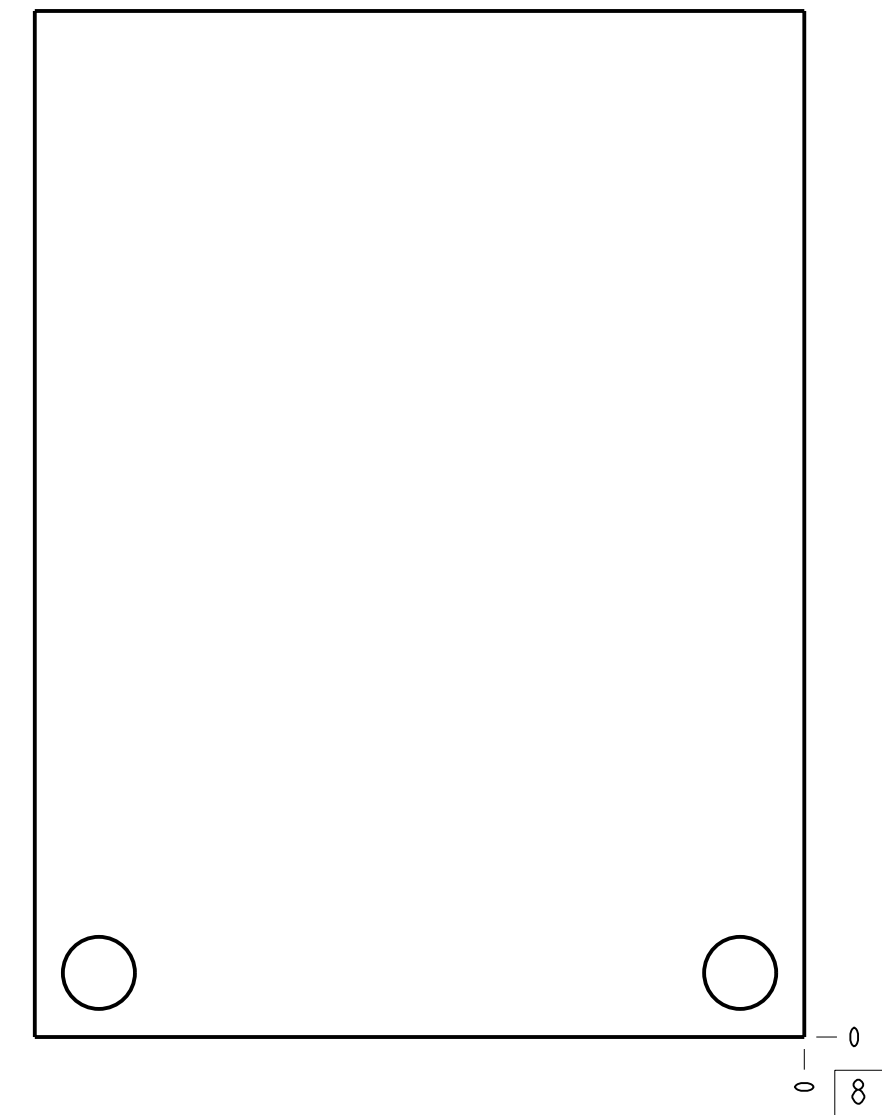
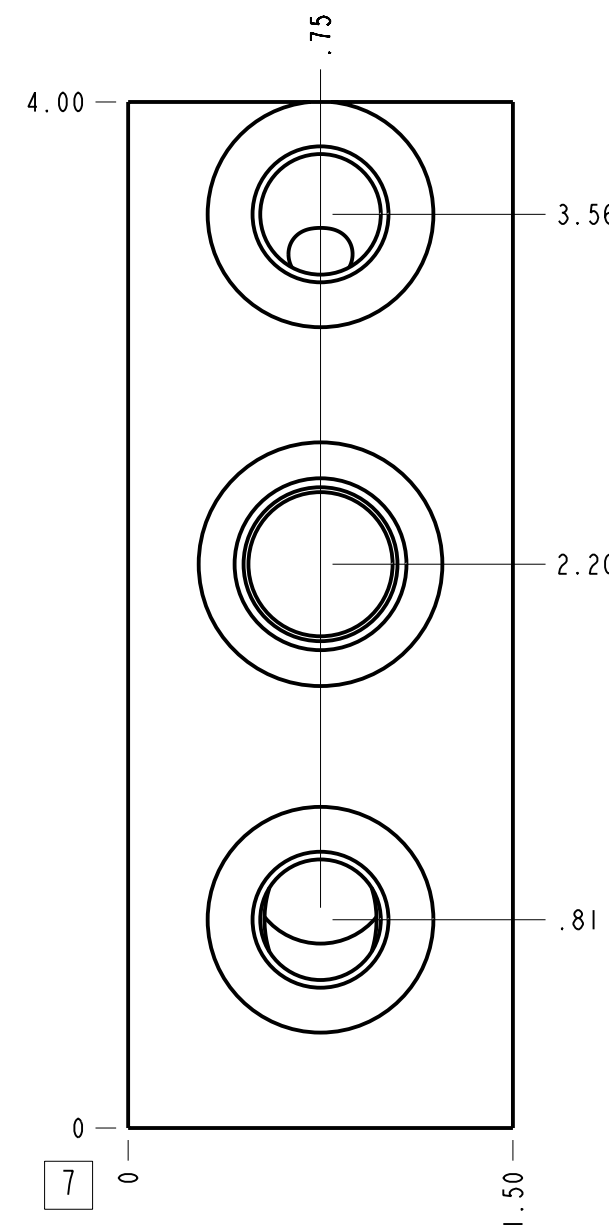
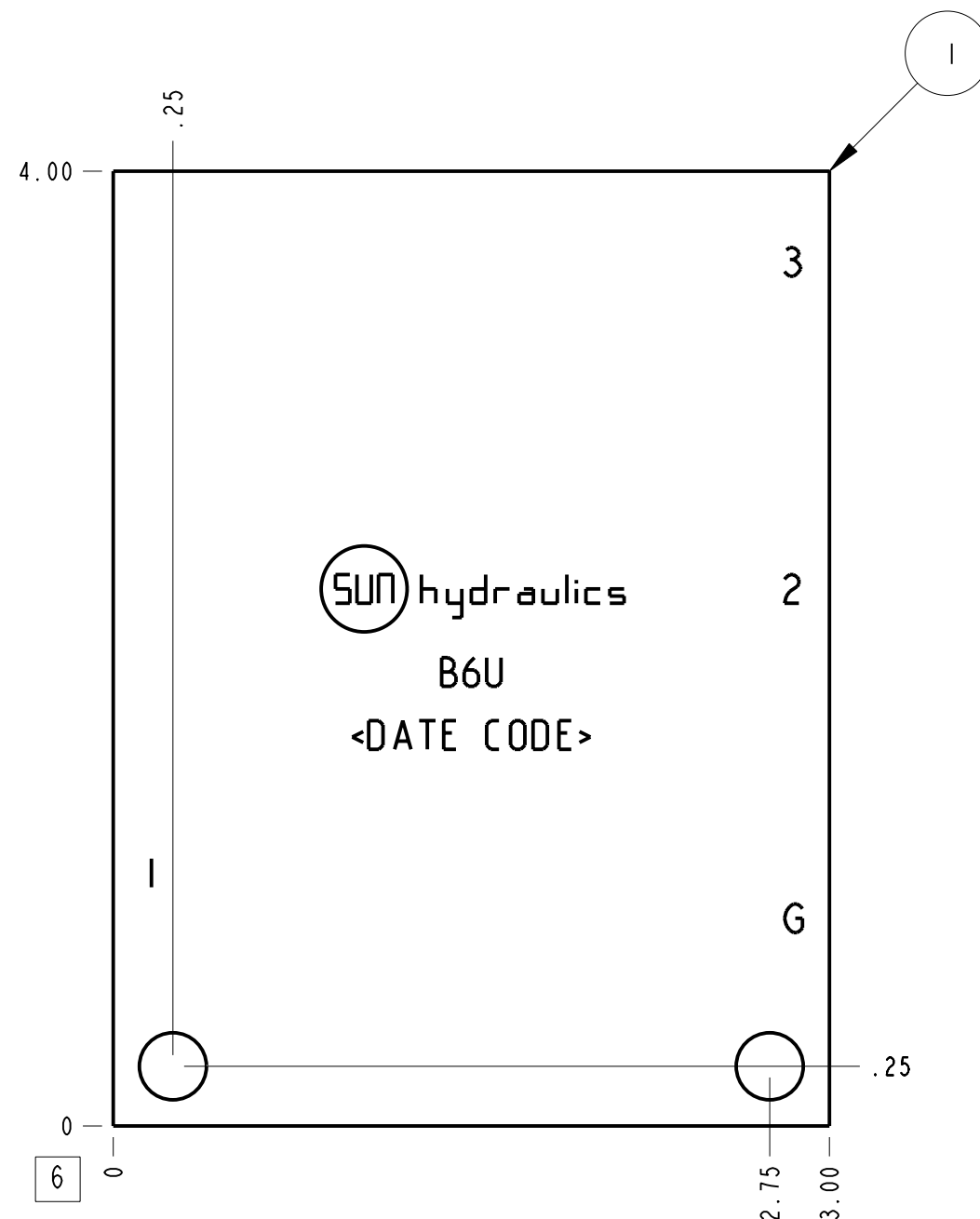
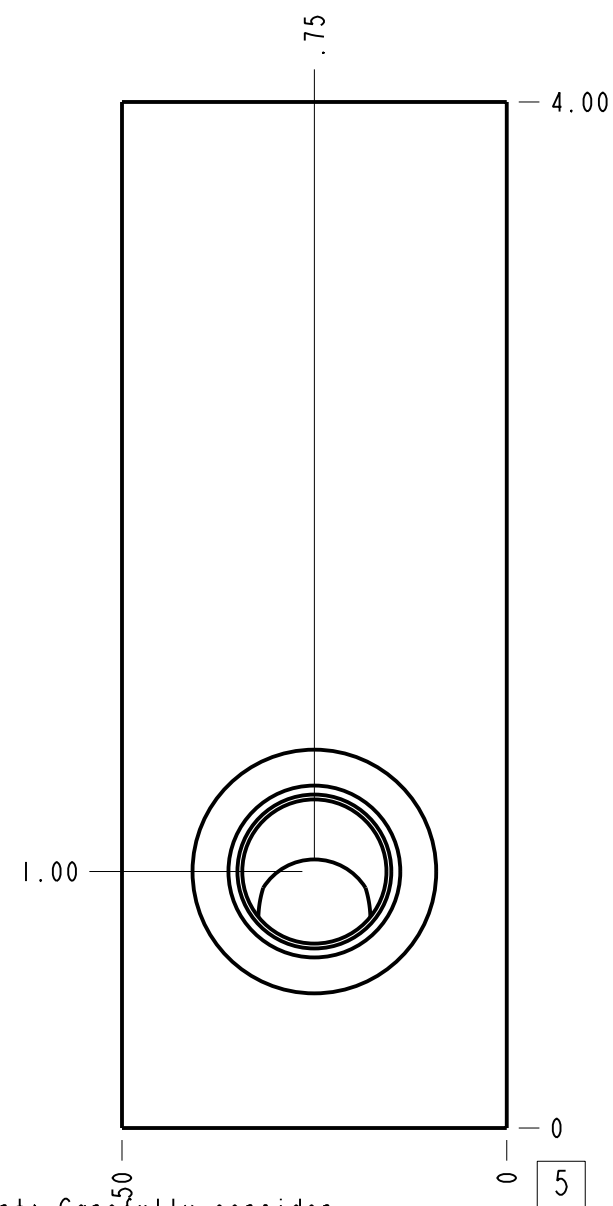
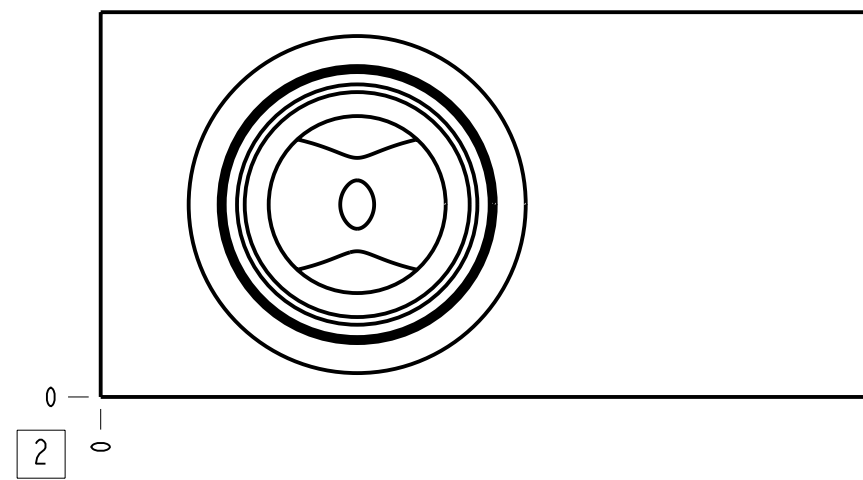


Technical Data	U.S. Units	Metric Units
Cavity	T-2A	
Body Features	Ninety degree with reverse flow check - sequence	
Body Type	Line mount	
Interface	None	
Open Cavity Quantity	1	
Weight	1.702 lb.	0,772 kg.
Mounting Hole Diameter	.28 in.	7,1 mm
Mounting Hole Depth	Through	
Mounting Hole Quantity	2	
Includes integral cartridge(s)	Yes (see Included Components)	



Notes

1. Important: Carefully consider the maximum system pressure. The pressure rating of the manifold is dependent on the manifold material, with the port type/size a secondary consideration. Manifolds constructed of aluminum are not rated for pressures higher than 3000 psi (210 bar), regardless of the port type/size specified.
2. This drawing is for reference only. It is generated by an automated process and does not fall under Sun's document control process.
3. Items without balloons are shipped loose.

Port Headings		
Product	Port	Size
B6U	Ports 1 & 2	3/8" BSPP
B6U	Port 3	1/4" BSPP
B6U	Gage Port	1/4" BSPP

2	CXFAXCN			MODEL	1
1	150-861-008		6061-T6 ALUMINUM	BODY	1
ITEM	PART NO.	SETTING	MATERIAL	PART NAME	QTY
MODEL			B6U	ALL DIMENSIONS IN INCH VIEWS ARE THIRD ANGLE	FIRST ANGLE THIRD ANGLE
DESCRIPTION			T-2A Line mount (See Technical Data for Body Features)	DATE	SCALE
			Sep-04-23	1.336	DWG SIZE SHEET
			C	1	